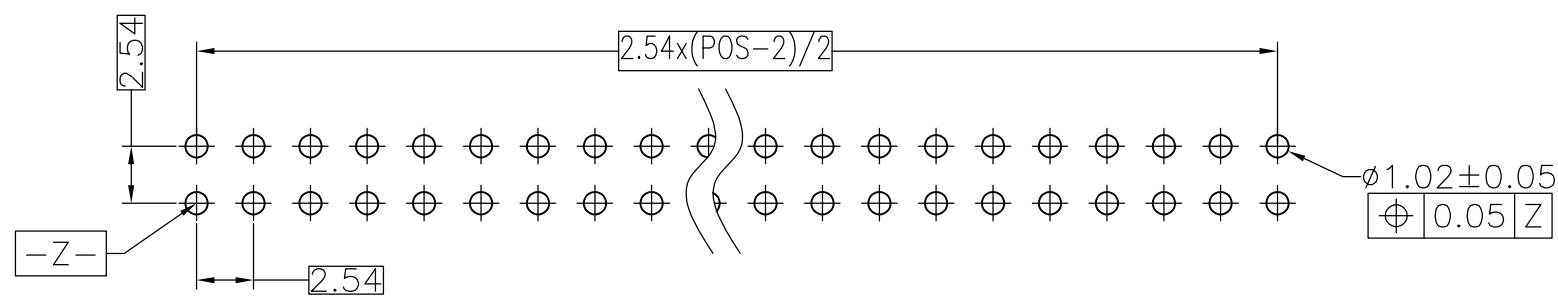
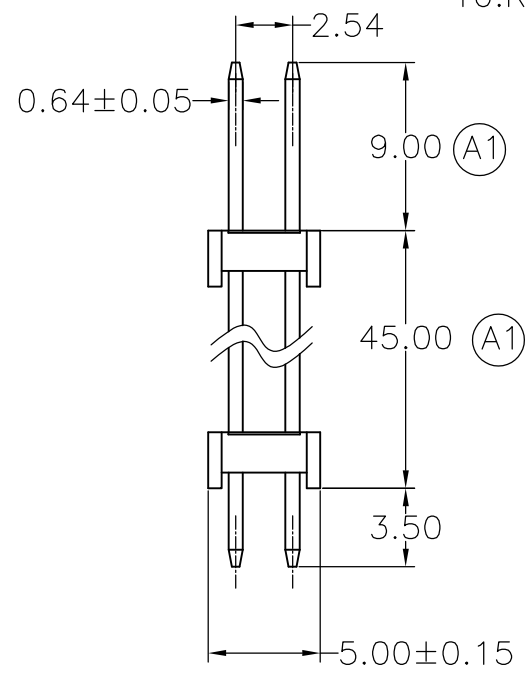
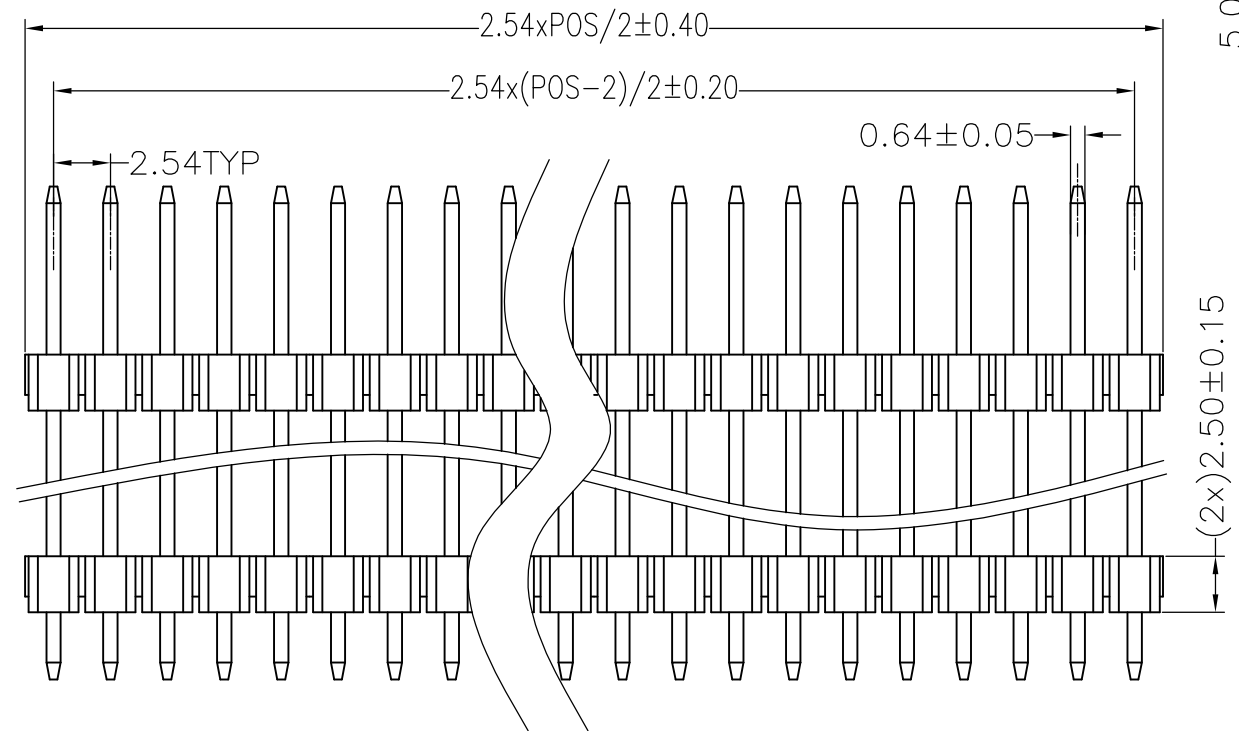
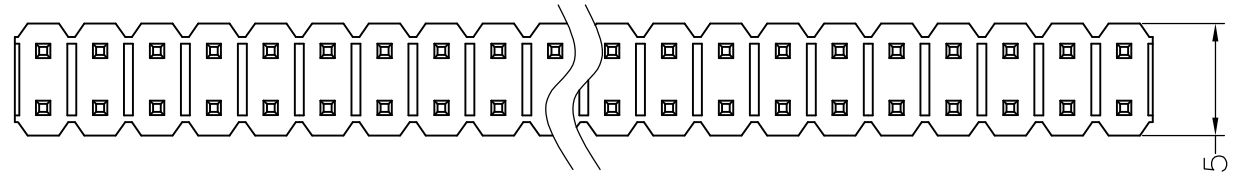


THIS DRAWING IS UNPUBLISHED. RELEASED FOR PUBLICATION
 © COPYRIGHT - By - ALL RIGHTS RESERVED.

LOC	DIST	REVISIONS					
		P	LTR	DESCRIPTION	DATE	DWN	APVD
-	-	A1		UPDATE PIN LENGTH PER CUSTOMER REQUIREMENT	2016.3.7	A.Y	R.B

NOTES:

- 1.RATED CURRENT:3.0AMP.
- 2.CONTACT RESISTANCE:20mΩ MAX.
- 3.WITHSTAND VOLTAGE:1000V AC/DC
- 4.INSULATION RESISTANCE:1000MΩ MIN.
- 5.OPERATION TEMPERATURE:-40°C TO +105°C
- 6.CONTACT MATERIAL:COPPER ALLOY
- 7.CONTACT PLATING:
 3u" MIN. AU ON MATING AREA OVER NI UNDERPLATING
 80u" MIN. SN ON SOLDER AREA OVER NI UNDERPLATING
- 8.INSULATOR MATERIAL:PA9T UL94V-0 BK
- 9.RECOMMENDED SOLDERING PROCESS:
 WAVE SOLDERING, PEAK TEMPERATURE: 260°C, 5S
- 10.RECOMMENDED MATING TE PN: X-2271668-X



RECOMMENDED P.C.B LAYOUT (COMPONENT SIDE)

TUBE	16	1-2271729-6
TUBE	14	1-2271729-4
TUBE	6	2271729-6
PACKAGING	POS	PN
PRODUCT FAMILY TABLE		

THIS DRAWING IS A CONTROLLED DOCUMENT.		DWN	1MAR2016	STE TE Connectivity					
DIMENSIONS: mm		CHK	Andy yang				AMPMODU, PIN HDR, 2.54PITCH 2ROW, 2HOUSING, VERTICAL, TH		
TOLERANCES UNLESS OTHERWISE SPECIFIED:		APVD	Rick Bian						
MATERIAL		PRODUCT SPEC	XIANG XU						
FINISH		APPLICATION SPEC	108-137777						
-		WEIGHT	-	SIZE	CAGE CODE	DRAWING NO	RESTRICTED TO		
-		CUSTOMER DRAWING		A3	00779	C-2271729	-		
				SCALE	1:1	SHEET	1 OF 1		
						REV	A1		

单击下面可查看定价，库存，交付和生命周期等信息

[>>TE Connectivity\(泰科\)](#)