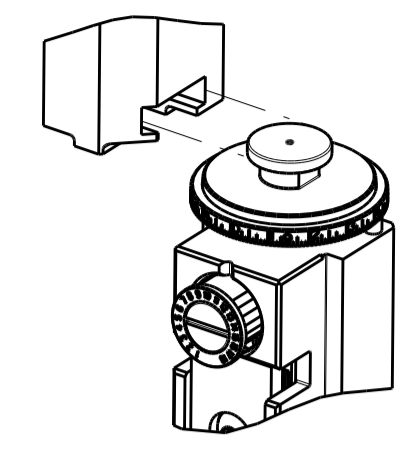


PART NUMBER	REVISION	DESCRIPTION	FEED TYPE
2151017-1	F	FINE CRIMP HEIGHT ADJUST	MECHANICAL
2151017-2	F	FINE CRIMP HEIGHT ADJUST	PNEUMATIC
5-2151017-1	F	SEAL STRIPPER CRIMPER TERMINATING UNIT	MECHANICAL
5-2151017-2	F	SEAL STRIPPER CRIMPER TERMINATING UNIT	PNEUMATIC
7-2151017-1	F	MECHANICAL AND CRIMP TOOLING KIT	MECHANICAL
7-2151017-2	F	PNEUMATIC AND CRIMP TOOLING KIT	PNEUMATIC
7-2151017-7	A	CRIMP TOOLING KIT	-

ATLANTIC VERSION TERMINATOR INTERFACE ADAPTER



APPLICATOR DATA		
CRIMP	SIZE	TYPE
WIRE	1.22 mm [.048]	F
INSUL	2.03 mm [.080]	F

APPLICATOR INSTRUCTIONS
408-35042

TERMINAL DATA: TE TERMINAL		TE CRIMP SPECIFICATION	
TERMINAL NAME: MINI UNIV MATE-N-LOK PIN CONTACT			
WIRE STRIP LENGTH		INSULATION DIAMETER RANGE	
3.20-4.00 mm [.126-.157 IN]		Ø1.20-1.75 mm [.047-.069 IN]	
TERMINAL APPLICATION SPECIFICATION	(A)114-5050		
TERMINALS APPLIED			
TE TERMINAL	TE TERMINAL	TE TERMINAL	TE TERMINAL
(A) 170359-1	(A) 170359-2	(A) 170359-3	(A) 170359-4
(A) 170361-3	(A) 170361-4	(A) 170361-1	(A) 170361-2

TERMINAL DATA: TE TERMINAL		TE CRIMP SPECIFICATION	
TERMINAL NAME: MINI UNIV MATE-N-LOK PIN CONTACT			
WIRE STRIP LENGTH		INSULATION DIAMETER RANGE	
3.20-4.00 mm [.126-.157 IN]		Ø1.20-1.75 mm [.047-.069 IN]	
TERMINAL APPLICATION SPECIFICATION	(B)114-16017	(C)114-1111	
TERMINALS APPLIED			
TE TERMINAL	TE TERMINAL	TE TERMINAL	TE TERMINAL
(B) 1-770901-0	(B) 770901-1	(B) 770901-2	(B) 770901-3
(C) 1-794218-0	(C) 794218-1	(C) 794218-2	(C) 794218-3
(B) 770902-4	(B) 770902-1	(B) 770902-2	(B) 770902-3
(B) 1-770902-1	(B) 770902-5	(B) 770902-6	(B) 1-770902-0
(C) 1-794219-0	(C) 794219-1	(C) 794219-2	(C) 794219-3

WIRE SIZE	CRIMP HEIGHT mm [INCH]	CRIMP HEIGHT REFERENCE SETTING
22 AWG OR 0.34mm2	0.78+/-0.05 [.031+/- .002]	8.2
24 AWG OR 0.22mm2	0.69+/-0.05 [.027+/- .002]	9.1
26 AWG OR 0.14mm2	0.63+/-0.05 [.025+/- .002]	9.8

WIRE SIZE	CRIMP HEIGHT mm [INCH]	CRIMP HEIGHT REFERENCE SETTING
22 AWG	0.78+/-0.05 [.031+/- .002]	8.2
24 AWG	0.69+/-0.05 [.027+/- .002]	9.1
26 AWG	0.63+/-0.05 [.025+/- .002]	9.8

- RECOMMENDED SPARE PARTS
- REFER TO SUPPLIED INSTRUCTION SHEET FOR CLEANING, LUBRICATION AND STORAGE OF APPLICATOR.
- APPLY PART NUMBER 1-23419-5 LOCTITE TO THREADS OF ITEMS 180. APPLY PART NUMBER 2-23419-6 LOCTITE TO THREADS OF ITEM 242.
- CRIMP HEIGHT REFERENCE SETTING WAS THE SETTING USED WHEN THE APPLICATOR WAS QUALIFIED AT THE FACTORY. ADJUSTMENT MAY BE NECESSARY WHEN RUNNING APPLICATOR IN THE FIELD.
- 5. UNLESS SPECIFIED OTHERWISE TORQUE VALUES SHALL BE USED PER DOCUMENT, 101-35000.
- 114-13089 TERMINAL SPECIFICATION IS FOR SEAL APPLICATION ONLY. "F" TYPE INSULATION CRIMP SNAIL CAM SETTING FOR SEAL APPLICATIONS WILL DIFFER TO THAT OF UNSEALED APPLICATIONS.
- POSITION ITEMS 7 AND 294 AS SHOWN FOR ALL TERMINALS EXCEPT PN'S; 794218-1, 794218-2, 794218-3 AND 1-794218-0. FOR TERMINALS 794218-1, 794218-2, 794218-3 AND 1-794218-0 REVERSE POSITION OF ITEMS 7 AND 294.
- USE ITEM 34 TERMINAL SUPPORT FOR ALL TERMINALS EXCEPT PN'S; 794218-1, 794218-2, 794218-3 AND 1-794218-0. FOR TERMINALS 794218-1, 794218-2, 794218-3 AND 1-794218-0 USE ITEM 295 TERMINAL SUPPORT.
- TERMINAL LUBRICANT IS RECOMMENDED.

***WARNING**
ON INSTALLATION, SET WIRE DISC TO CRIMP HEIGHT REFERENCE SETTING FOR LARGEST WIRE SIZE. CRIMP HEIGHT REFERENCE SETTINGS GREATER THAN THE VALUE SHOWN MAY CAUSE DAMAGE TO THE CRIMP TOOLING, REFER TO THE INSTRUCTION SHEET FOR PROPER SETUP AND ADJUSTMENTS.

LOC	DIST	REVISIONS			
A	66	REV	DATE	BY	CHK
		D	ECR-18-008334	31MAY2018	JAH JDG
		D1	ECR-18-013185	20AUG2018	MZ CT
		E	ECR-19-001524	29JAN2019	TB GB
		F	ECR-19-006414	23APR2019	MZ YY

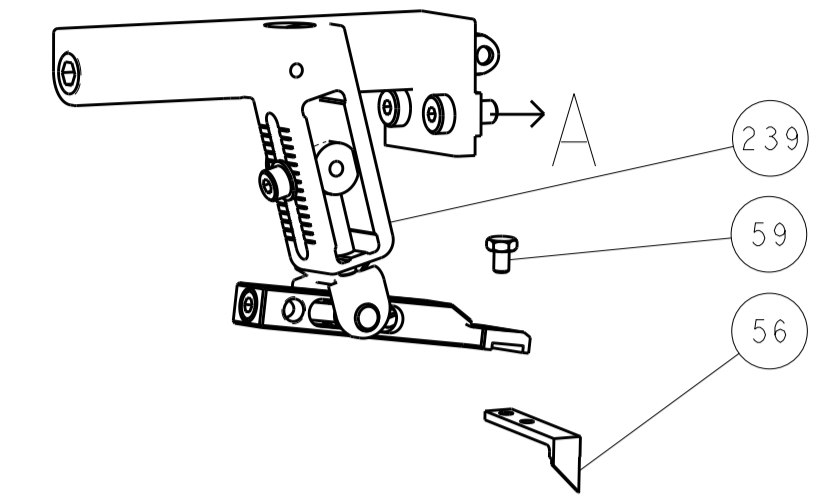
REV	QTY	LOC	DESCRIPTION	DATE	BY	CHK	ITEM NO		
8	-	1	1	1	1	1	2-1752356-0	SUPPORT, TERMINAL	295
8	-	1	1	1	1	1	3-240641-7	SPACER	294
	-	-	-	1	1	-	1803515-3	RAM ASSEMBLY, SF ATLANTIC	293
	-	-	-	1	1	-	2-1803583-3	APPLICATOR BASIC ASSEMBLY, SF	292
	-	1	-	1	-	-	2119640-1	PUSH ROD, AIR FEED	250
	-	1	-	1	-	-	1803259-1	BUSHING, FLANGED	249
	-	1	-	1	-	-	2119641-1	FEED CAM, AIR FEED	248
	-	1	1	1	1	1	2119082-9	CAM, SNAIL, INSULATION ADJUSTMENT	244
	-	1	1	1	1	1	2079764-1	WASHER, WAVE SPRING, CREST-TO-CREST	243
3	-	1	1	1	1	1	2119083-1	RETAINER, INSULATION DIAL	242
	-	1	1	1	1	1	7-18023-7	SCR, SKT HD CAP M3 X 4.0	241
	-	-	1	-	1	-	2119580-1	MECHANICAL FEED ASSEMBLY	239
	-	1	-	1	-	-	2063440-1	AIR FEED MODULE	238
	-	-	-	1	1	-	4-1722335-3	STRIPPER, SIDE FEED	182
	-	-	-	1	1	-	1-5018030-0	NUT, HEX, REG, RoHS, M3.5	181
3	-	-	-	1	1	-	1-1752354-7	STANDOFF, HOLD-DOWN	180
	-	-	-	1	1	-	993111-1	PIN, SLOTTED SPRING 3.0 X 20.0	177
	-	-	-	1	1	-	5-22280-0	SPRING, COMPRESSION	176
	-	-	-	1	1	-	1752353-3	GUIDE PIN, HOLDDOWN	175
	-	-	-	1	1	-	1901680-2	GUIDE PIN, HOLDDOWN	174
	-	2	-	2	-	-	21045-3	RING, RETAIN, EXTERN, 3/16 CRESCENT	172
	-	REF	REF	REF	REF	REF	994970-2	COUNTER, MAGNETIC	164
	-	1	-	1	-	-	240638-1	SPRING, FEED FINGER	163
	-	1	-	1	-	-	3-23627-7	PIN, RETAIN, GRVD, 3/16 X .854	137
	-	1	-	1	-	-	2119799-1	HOLDER, FEED FINGER, AF	136
9	-	1	1	1	1	1	2119955-1	ASSY, LUBRICATOR, SIDE FEED	113
	-	1	1	1	1	1	2844908-1	SCREW, LOCKING	99
	-	1	1	1	1	1	2844907-1	POST, LOCKING	98
	-	1	1	1	1	1	455888-5	SPACER, CRIMPER	82
	-	1	1	1	1	1	1803607-1	DOCUMENTATION PACKAGE	71
	-	1	1	1	1	1	2119740-1	TAG, IDENTIFICATION	67
	-	2	2	2	2	2	2168078-1	SCREW, DRIVE, RH, RoHS, 2 x .188	66
	-	1	1	1	1	1	2168083-2	SCR, SKT HD CAP, RoHS, M4 X 8.0	60
	-	1	1	1	1	1	5-18022-5	SCR, HEX HD CAP, M4 X 6.0	59
	-	1	1	1	1	1	1338685-1	PAWL, FEED	56
	-	4	4	4	4	4	2168083-3	SCR, SKT HD CAP, RoHS, M4 X 12.0	54
	-	2	2	2	2	2	2168083-8	SCR, SKT HD CAP, RoHS, M4 X 16	53
	-	1	1	1	1	1	1803382-6	HOLD DOWN, SPRING LOADED	50
	-	1	2	1	2	1	18023-9	SCR, SKT HD CAP M4 X 6.0	49
	-	-	1	-	1	-	2119652-1	FEED CAM, PRE FEED	48
	-	-	1	-	1	-	2119653-1	FEED CAM, POST FEED	47
	-	1	1	-	-	1	1803583-9	APPLICATOR BASIC ASSEMBLY, SF	46
	-	1	1	-	-	1	1803515-1	RAM ASSEMBLY, SF ATLANTIC	44
	-	1	1	1	1	1	1803602-1	SCR, BHSC, RoHS (M8 X 25)	41
8	-	1	1	1	1	1	1752356-1	SUPPORT, TERMINAL	34
	-	2	2	2	2	2	2079383-5	SCR, BHSC, RoHS (M4 X 20)	33
	-	2	2	2	2	2	2-2844962-6	SPACER, CYLINDRICAL, STRIP GUIDE	30
	-	1	1	1	1	1	2844992-1	ASSEMBLY, STRIP GUIDE	29
	-	1	1	1	1	1	455888-3	SPACER, CRIMPER	28
	-	1	1	1	1	1	1320928-2	STRIP GUIDE	24
	-	1	1	-	-	1	2168083-2	SCR, SKT HD CAP, RoHS, M4 X 8.0	21
	-	2	2	1	1	2	1-18028-2	WASHER, FLAT, REG M4	20
	-	1	1	-	-	1	2119533-1	STRIPPER, SIDE FEED	19
	-	1	1	1	1	1	2119806-1	INSERT, SHEAR	13
	-	1	1	1	1	1	3-22280-3	SPRING, COMPRESSION	12
	-	1	1	1	1	1	1-356885-4	STOP, SHEAR	11
	-	1	1	1	1	1	2119805-1	SHEAR HOLDER, FRONT	10
	-	1	1	1	1	1	1803095-1	FLOATING SHEAR, FRONT	9
	-	1	2	2	1	1	1333225-9	ANVIL, COMBINATION	8
	-	1	1	1	1	1	1-240641-0	SPACER	7
	-	-	-	-	-	-	-	-	6
	-	1	1	1	1	1	2119757-8	DEPRESSOR, SHEAR	5
	-	1	1	1	1	1	1-238011-3	BLOCK, CRIMPER SPACER	4
	-	1	2	2	1	1	1-2119582-9	CRIMPER, INSULATION F PREMIUM	3
	-	1	1	1	1	1	455888-5	SPACER, CRIMPER	2
	-	1	2	2	1	1	568176-6	CRIMPER, WIRE	1

ATLANTIC VERSION
Shown on sheets 1 of 4 & 2 of 4
(Pacific version shown on sheets 3 of 4 & 4 of 4)

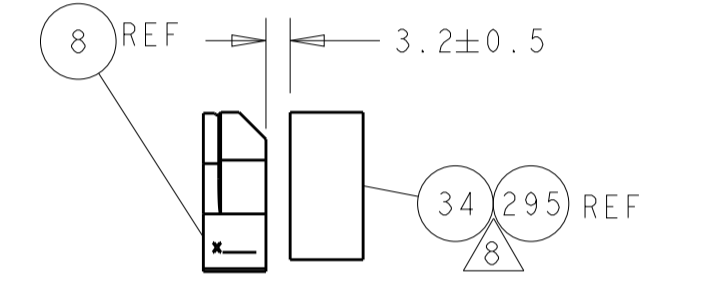
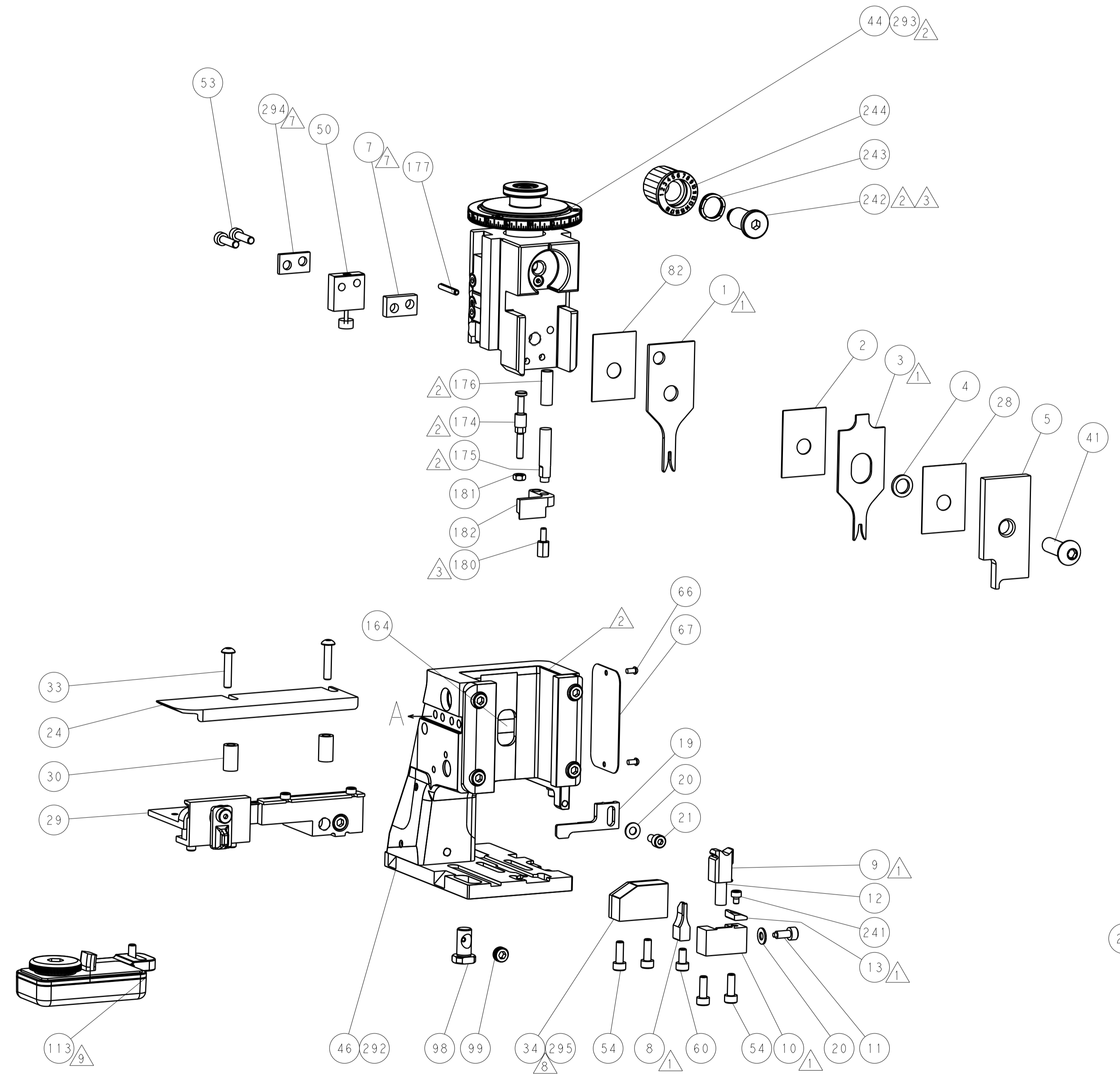
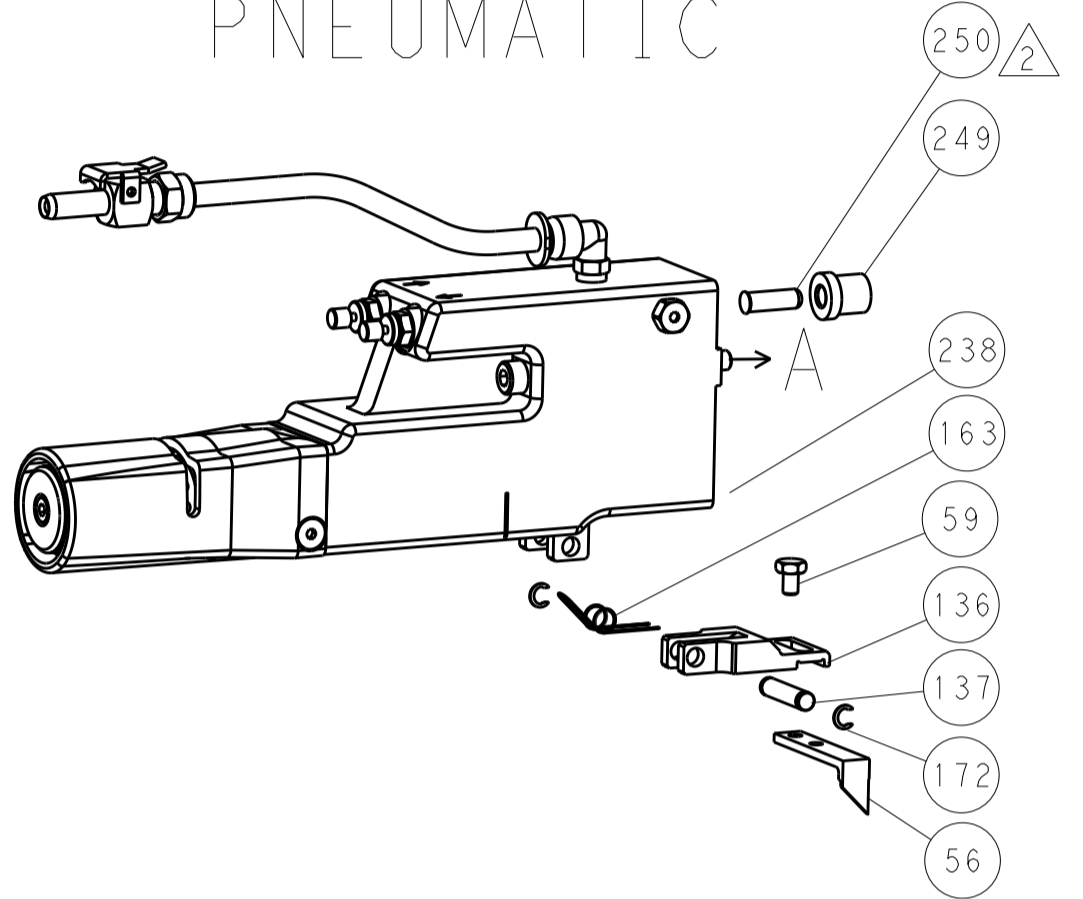
REV	QTY	LOC	DESCRIPTION	DATE	BY	CHK	ITEM NO
-77	-72	-71	-52	-51	-2	-1	PART NO
<small>THIS IS THE ONLY DRAWING TO BE USED FOR THE PRODUCTION OF THIS PRODUCT. ANY CHANGES TO THE DRAWING MUST BE APPROVED BY THE DESIGN ENGINEER AND THE MANUFACTURING ENGINEER. ANY CHANGES TO THE DRAWING MUST BE APPROVED BY THE DESIGN ENGINEER AND THE MANUFACTURING ENGINEER. ANY CHANGES TO THE DRAWING MUST BE APPROVED BY THE DESIGN ENGINEER AND THE MANUFACTURING ENGINEER.</small>							
DIMENSIONS:		TOLERANCES UNLESS OTHERWISE SPECIFIED:		OWN		DATE	
mm	0 PLC ±	1 PLC ±	2 PLC ±	3 PLC ±	4 PLC ±	5 PLC ±	ANGLES ±
MATERIAL		FINISH		WEIGHT		SCALE	
				A1 00779		C=2151017	
Customer Accessible Production Drawing				SCALE		SHEET 1 OF 4	
				REV		F	

LOC		DIST		REVISIONS			
A	66	P	LYM	DESCRIPTION	DATE	OWN	APVD
		-		SEE SHEET 1			

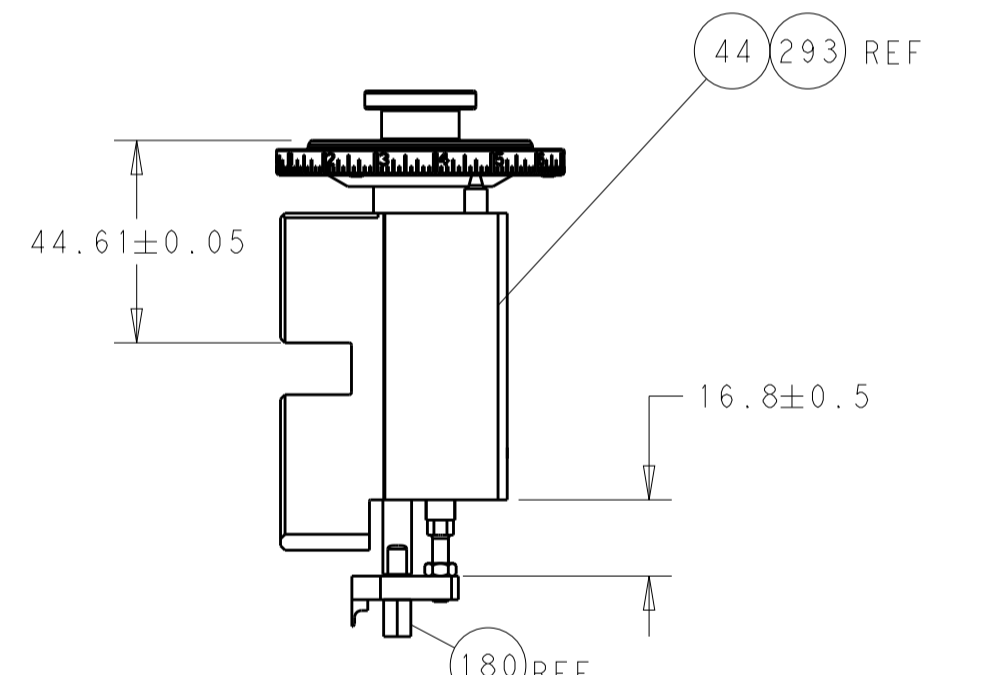
FEED TYPE MECHANICAL



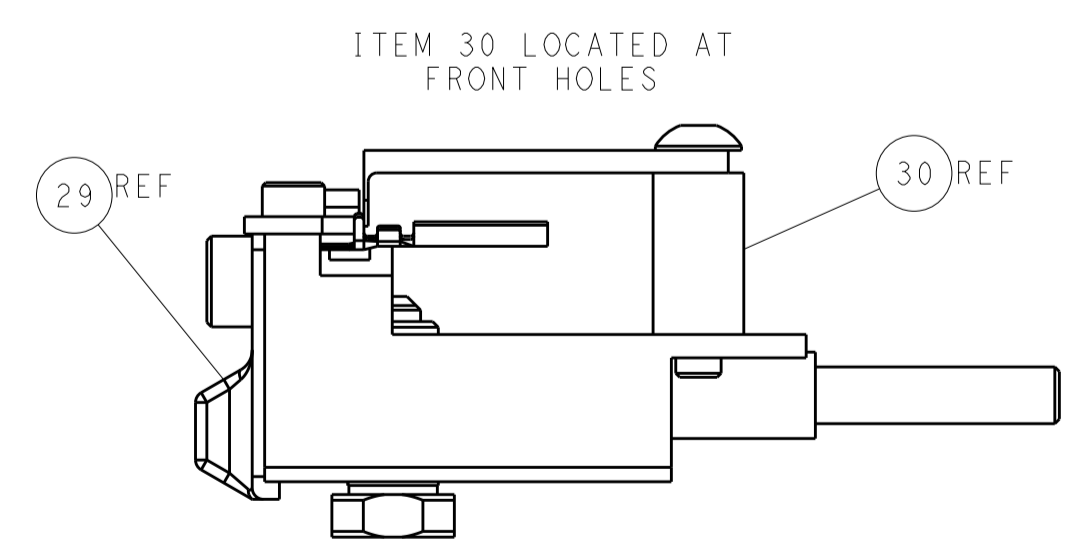
PNEUMATIC



TERMINAL SUPPORT LOCATION

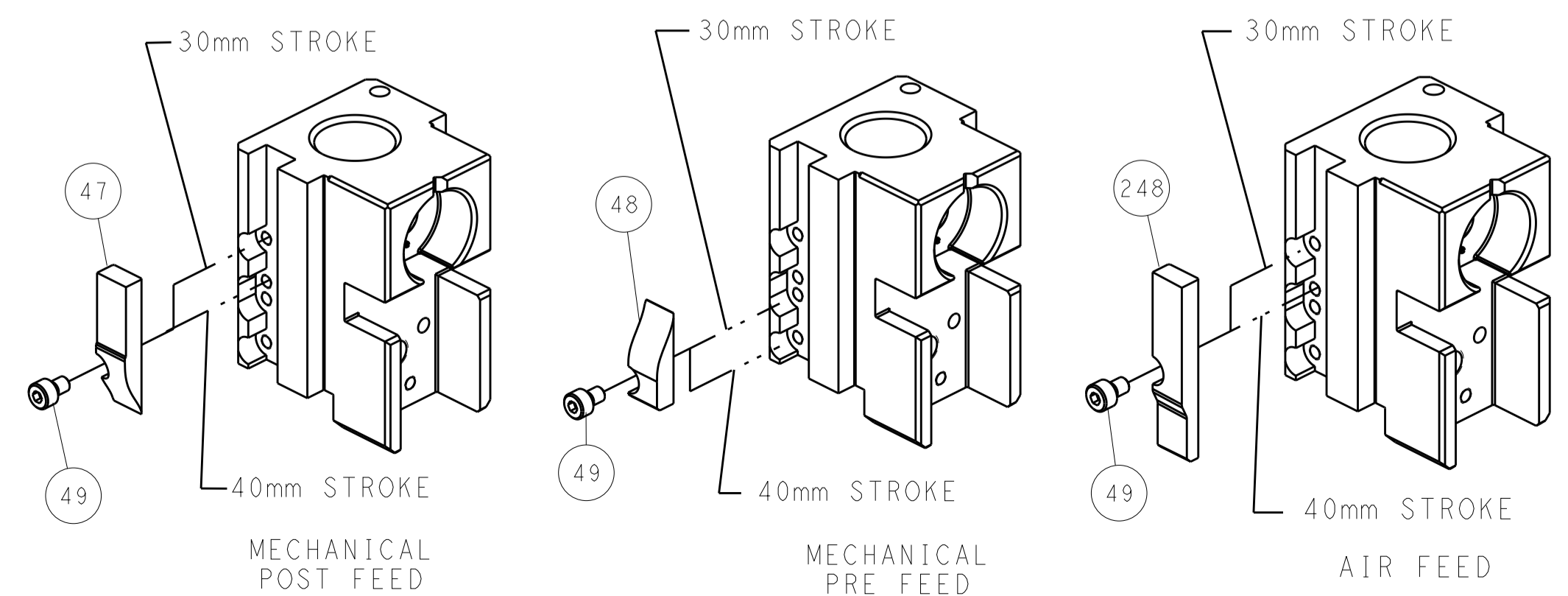


RAM AND HOLDDOWN SET-UP



FEED TRACK POSITION GUIDE BY INSULATION BARREL

CAM POSITIONS

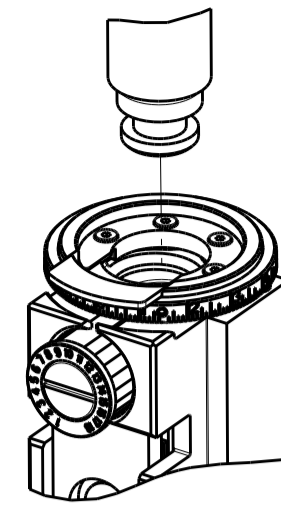


ATLANTIC VERSION
 Shown on sheets 1 of 4 & 2 of 4
 (Pacific version shown on sheets 3 of 4 & 4 of 4)

DIMENSIONS:		TOLERANCES UNLESS OTHERWISE SPECIFIED:		DWN R. HUANG 09NOV2011		TE Connectivity	
mm	0 PLC ±	1 PLC ±	2 PLC ±	3 PLC ±	4 PLC ±	5 PLC ±	Harrisburg, PA 17105-3608
ANGLES	FINISH	WEIGHT	SCALE	APVD S. XI 09NOV2011	NAME	SIZE	CAGE CODE
			1:2	PRODUCT SPEC	Ocean Side Feed	00779	2151017
Customer Accessible Production Drawing				SHEET 2 OF 4		REV F	

PART NUMBER	REVISION	DESCRIPTION	FEED TYPE
2-2151017-1	F	FINE CRIMP HEIGHT ADJUST	MECHANICAL
2-2151017-2	F	FINE CRIMP HEIGHT ADJUST	PNEUMATIC
7-2151017-7	A	CRIMP TOOLING KIT	-

PACIFIC VERSION TERMINATOR
INTERFACE ADAPTER



APPLICATOR DATA		
CRIMP	SIZE	TYPE
WIRE	1.22 mm [.048]	F
INSUL	2.03 mm [.080]	F
APPLICATOR INSTRUCTIONS 408-35042		

TERMINAL DATA: TE TERMINAL		TE CRIMP SPECIFICATION	
TERMINAL NAME: MINI UNIV MATE-N-LOK PIN CONTACT			
WIRE STRIP LENGTH		INSULATION DIAMETER RANGE	
3.20-4.00 mm [.126-.157 IN]		Ø1.20-1.75 mm [.047-.069 IN]	
TERMINAL APPLICATION SPECIFICATION	(A)114-5050	-	-
TERMINALS APPLIED 9			
TE TERMINAL	TE TERMINAL	TE TERMINAL	TE TERMINAL
(A) 170359-1	(A) 170359-2	(A) 170359-3	(A) 170359-4
(A) 170361-3	(A) 170361-4	(A) 170361-1	(A) 170361-2

TERMINAL DATA: TE TERMINAL		TE CRIMP SPECIFICATION	
TERMINAL NAME: MINI UNIV MATE-N-LOK PIN CONTACT			
WIRE STRIP LENGTH		INSULATION DIAMETER RANGE	
3.20-4.00 mm [.126-.157 IN]		Ø1.20-1.75 mm [.047-.069 IN]	
TERMINAL APPLICATION SPECIFICATION	(B)114-16017	(C)114-1111	-
TERMINALS APPLIED 9			
TE TERMINAL	TE TERMINAL	TE TERMINAL	TE TERMINAL
(B) 1-770901-0	(B) 770901-1	(B) 770901-2	(B) 770901-3
7(C) 1-794218-0/8	7(C) 794218-1/8	7(C) 794218-2/8	7(C) 794218-3/8
(B) 770902-4	(B) 770902-1	(B) 770902-2	(B) 770902-3
(B) 1-770902-1	(B) 770902-5	(B) 770902-6	(B) 1-770902-0
(C) 1-794219-0	(C) 794219-1	(C) 794219-2	(C) 794219-3

WIRE SIZE	CRIMP HEIGHT mm [INCH]	CRIMP HEIGHT REFERENCE SETTING
22 AWG OR 0.34mm2	0.78+/-0.05 [.031+/-0.002]	8.2
24 AWG OR 0.22mm2	0.69+/-0.05 [.027+/-0.002]	9.1
26 AWG OR 0.14mm2	0.63+/-0.05 [.025+/-0.002]	9.8

WIRE SIZE	CRIMP HEIGHT mm [INCH]	CRIMP HEIGHT REFERENCE SETTING
22 AWG	0.78+/-0.05 [.031+/-0.002]	8.2
24 AWG	0.69+/-0.05 [.027+/-0.002]	9.1
26 AWG	0.63+/-0.05 [.025+/-0.002]	9.8



- 1 RECOMMENDED SPARE PARTS
- 2 REFER TO SUPPLIED INSTRUCTION SHEET FOR CLEANING, LUBRICATION AND STORAGE OF APPLICATOR.
- 3 APPLY PART NUMBER 2-23419-6 LOCTITE TO THREADS OF ITEM 242.
- 4 CRIMP HEIGHT REFERENCE SETTING WAS THE SETTING USED WHEN THE APPLICATOR WAS QUALIFIED AT THE FACTORY. ADJUSTMENT MAY BE NECESSARY WHEN RUNNING APPLICATOR IN THE FIELD.
5. UNLESS SPECIFIED OTHERWISE TORQUE VALUES SHALL BE USED PER DOCUMENT, 101-35000.
- 6 114-13089 TERMINAL SPECIFICATION IS FOR SEAL APPLICATION ONLY. "F" TYPE INSULATION CRIMP SNAIL CAM SETTING FOR SEAL APPLICATIONS WILL DIFFER TO THAT OF UNSEALED APPLICATIONS.
- 7 POSITION ITEMS 7 AND 294 AS SHOWN FOR ALL TERMINALS EXCEPT PN'S; 794218-1, 794218-2, 794218-3 AND 1-794218-0. FOR TERMINALS 794218-1, 794218-2, 794218-3 AND 1-794218-0 REVERSE POSITION OF ITEMS 7 AND 294.
- 8 USE ITEM 34 TERMINAL SUPPORT FOR ALL TERMINALS EXCEPT PN'S; 794218-1, 794218-2, 794218-3 AND 1-794218-0. FOR TERMINALS 794218-1, 794218-2, 794218-3 AND 1-794218-0 USE ITEM 295 TERMINAL SUPPORT.
- 9 TERMINAL LUBRICANT IS RECOMMENDED.

***WARNING**
ON INSTALLATION, SET WIRE DISC TO CRIMP HEIGHT REFERENCE SETTING FOR LARGEST WIRE SIZE. CRIMP HEIGHT REFERENCE SETTINGS GREATER THAN THE VALUE SHOWN MAY CAUSE DAMAGE TO THE CRIMP TOOLING, REFER TO THE INSTRUCTION SHEET FOR PROPER SETUP AND ADJUSTMENTS.

PACIFIC VERSION
Shown on sheets 3 of 4 & 4 of 4
(Atlantic version shown on sheets 1 of 4 & 2 of 4)

LOC	DIST	REV	DATE	BY	APPV
A	66				

REVISIONS						
REV	DATE	BY	DESCRIPTION	DATE	APPV	
-	-	-	SEE SHEET 1	-	-	
8	-	1	1	2-1752356-0	SUPPORT, TERMINAL	295
1	-	1	1	3-240641-7	SPACER	294
-	1	-	-	2119640-1	PUSH ROD, AIR FEED	250
-	1	-	-	1803259-1	BUSHING, FLANGED	249
-	1	1	1	2119082-9	CAM, SNAIL, INSULATION ADJUSTMENT	244
-	1	1	1	2079764-1	WASHER, WAVE SPRING, CREST-TO-CREST	243
3	-	1	1	2119083-1	RETAINER, INSULATION DIAL	242
-	1	1	1	7-18023-7	SCR, SKT HD CAP M3 X 4.0	241
-	-	1	-	2119580-1	MECHANICAL FEED ASSEMBLY	239
-	1	-	-	2063440-1	AIR FEED MODULE	238
-	2	-	-	21045-3	RING, RETAIN, EXTERN, 3/16 CRESCENT	172
-	REF	REF	-	994970-2	COUNTER, MAGNETIC	164
-	1	-	-	240638-1	SPRING, FEED FINGER	163
-	1	-	-	2119641-2	FEED CAM, AIR FEED	151
-	1	1	1	2168083-8	SCR, SKT HD CAP, RoHS, M4 X 16	144
-	4	4	4	2168083-9	SCR, SKT HD CAP, RoHS, M4 X 20	143
-	-	1	-	2119653-2	FEED CAM, POST FEED	142
-	1	1	1	1-1803583-0	APPLICATOR BASIC ASSEMBLY, SF	141
-	1	1	1	1803516-1	RAM ASSEMBLY, SF PACIFIC	140
-	1	-	-	3-23627-7	PIN, RETAIN, GRVD, 3/16 X .854	137
9	-	1	1	2119799-1	HOLDER, FEED FINGER, AF	136
-	1	1	1	2119955-1	ASSY, LUBRICATOR, SIDE FEED	113
-	1	1	1	2844908-1	SCREW, LOCKING	99
-	1	1	1	2844907-1	POST, LOCKING	98
-	1	1	1	455888-5	SPACER, CRIMPER	82
-	1	1	1	1803607-1	DOCUMENTATION PACKAGE	71
-	1	1	1	2119740-1	TAG, IDENTIFICATION	67
-	2	2	2	2168078-1	SCREW, DRIVE, RH, RoHS, 2 x .188	66
-	1	1	1	5-18022-5	SCR, HEX HD CAP, M4 X 6.0	59
-	1	1	1	1338685-1	PAWL, FEED	56
-	2	2	2	2168083-8	SCR, SKT HD CAP, RoHS, M4 X 16	53
-	1	1	1	1803382-6	HOLD DOWN, SPRING LOADED	50
-	1	2	2	18023-9	SCR, SKT HD CAP M4 X 6.0	49
-	-	1	-	2119652-1	FEED CAM, PRE FEED	48
-	1	1	1	1803602-1	SCR, BHSC, RoHS (M8 X 25)	41
8	-	1	1	1752356-1	SUPPORT, TERMINAL	34
-	2	2	2	2079383-5	SCR, BHSC, RoHS (M4 X 20)	33
-	2	2	2	2-2844962-6	SPACER, CYLINDRICAL, STRIP GUIDE	30
-	1	1	1	2844992-1	ASSEMBLY, STRIP GUIDE	29
-	1	1	1	455888-3	SPACER, CRIMPER	28
-	1	1	1	1320928-2	STRIP GUIDE	24
-	1	1	1	2168083-2	SCR, SKT HD CAP, RoHS, M4 X 8.0	21
-	2	2	2	1-18028-2	WASHER, FLAT, REG M4	20
-	1	1	1	2119533-1	STRIPPER, SIDE FEED	19
1	-	1	-	2119806-1	INSERT, SHEAR	13
-	1	1	1	3-22280-3	SPRING, COMPRESSION	12
-	1	1	1	1-356885-4	STOP, SHEAR	11
1	-	1	-	2119805-1	SHEAR HOLDER, FRONT	10
1	-	1	-	1803095-1	FLOATING SHEAR, FRONT	9
1	1	1	1	1333225-9	ANVIL, COMBINATION	8
1	-	1	-	1-240641-0	SPACER	7
-	-	-	-	-	-	6
-	1	1	1	2119757-8	DEPRESSOR, SHEAR	5
-	1	1	1	1-238011-3	BLOCK, CRIMPER SPACER	4
1	1	1	1	1-2119582-9	CRIMPER, INSULATION F PREMIUM	3
-	1	1	1	455888-5	SPACER, CRIMPER	2
1	1	1	1	568176-6	CRIMPER, WIRE	1

DIMENSIONS:		TOLERANCES UNLESS OTHERWISE SPECIFIED:		MATERIAL:		FINISH:	
mm	0 PLC ±	1 PLC ±	2 PLC ±	3 PLC ±	4 PLC ±	ANGLES ±	FINISH ±
MATERIAL:		FINISH:		WEIGHT:		SCALE:	
-		-		-		1:2	

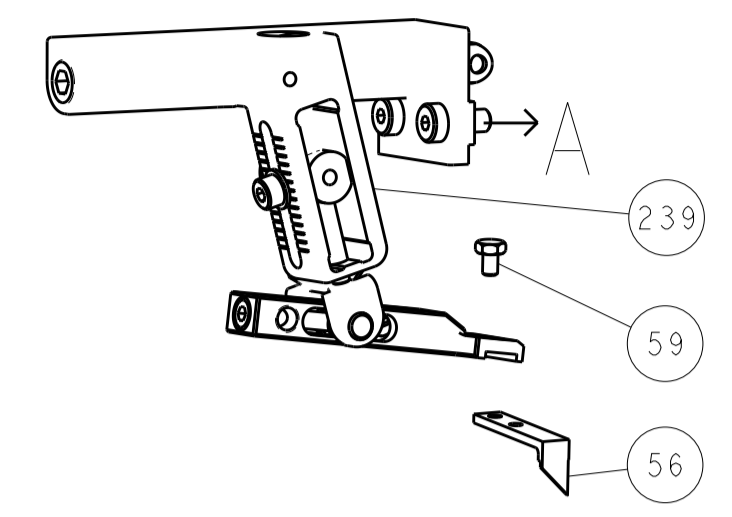
CHK	DATE	DESCRIPTION	ITEM NO
H. HUANG	09NOV2011	TE Connectivity	
S. XI	09NOV2011	Harrisburg, PA 17105-3608	
I. CRUZ	09NOV2011		

SIZE	CAGE CODE	DRAWING NO	RESTRICTED TO
A1	00779	2151017	-

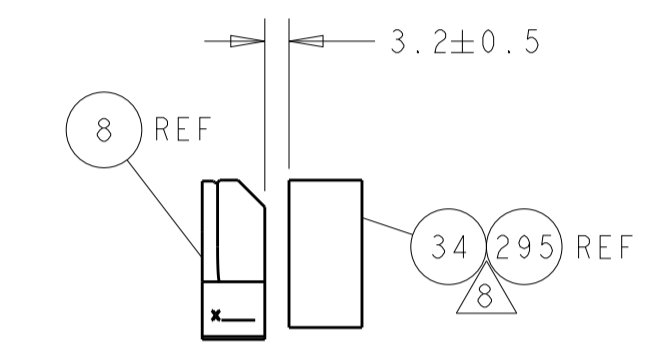
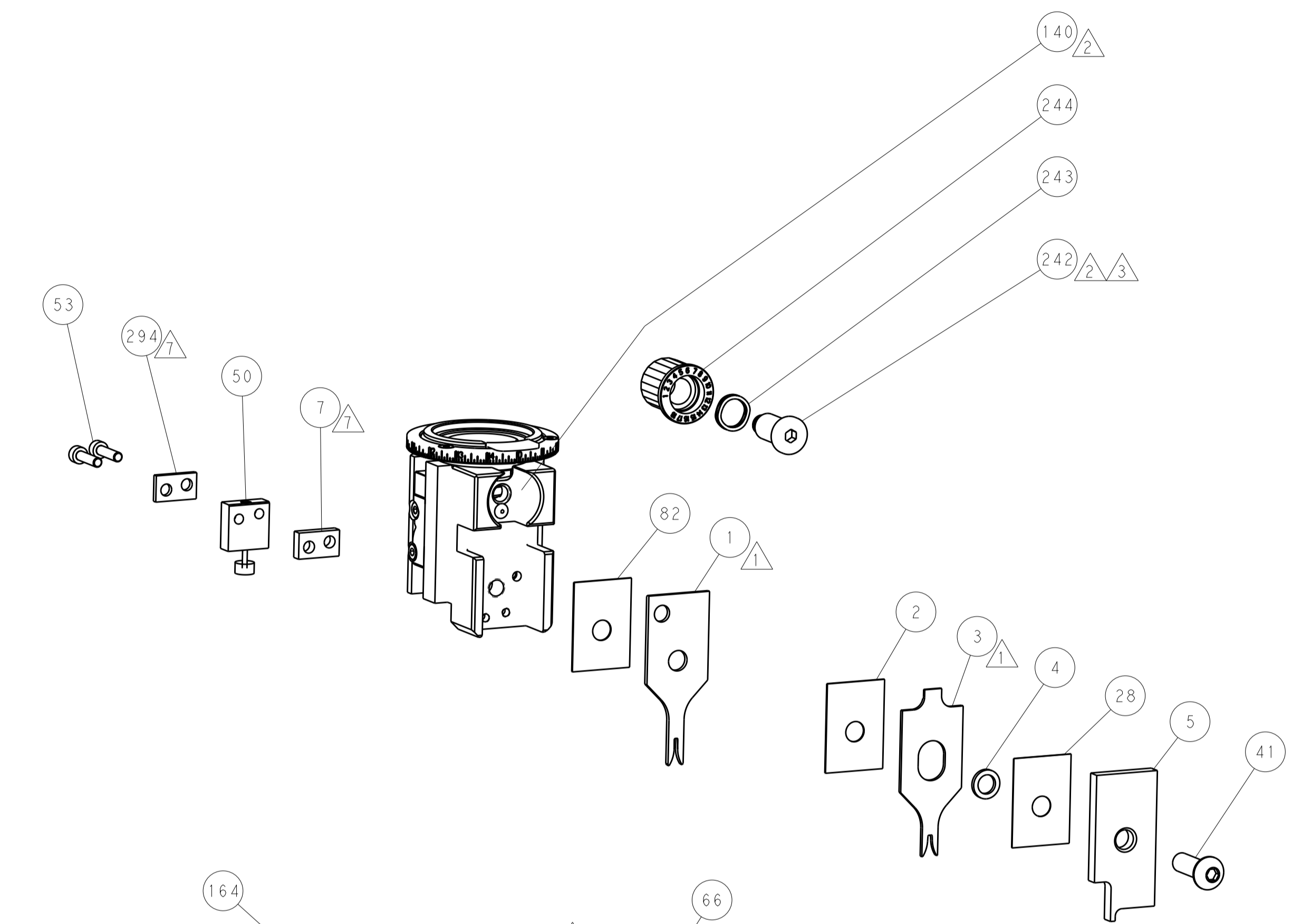
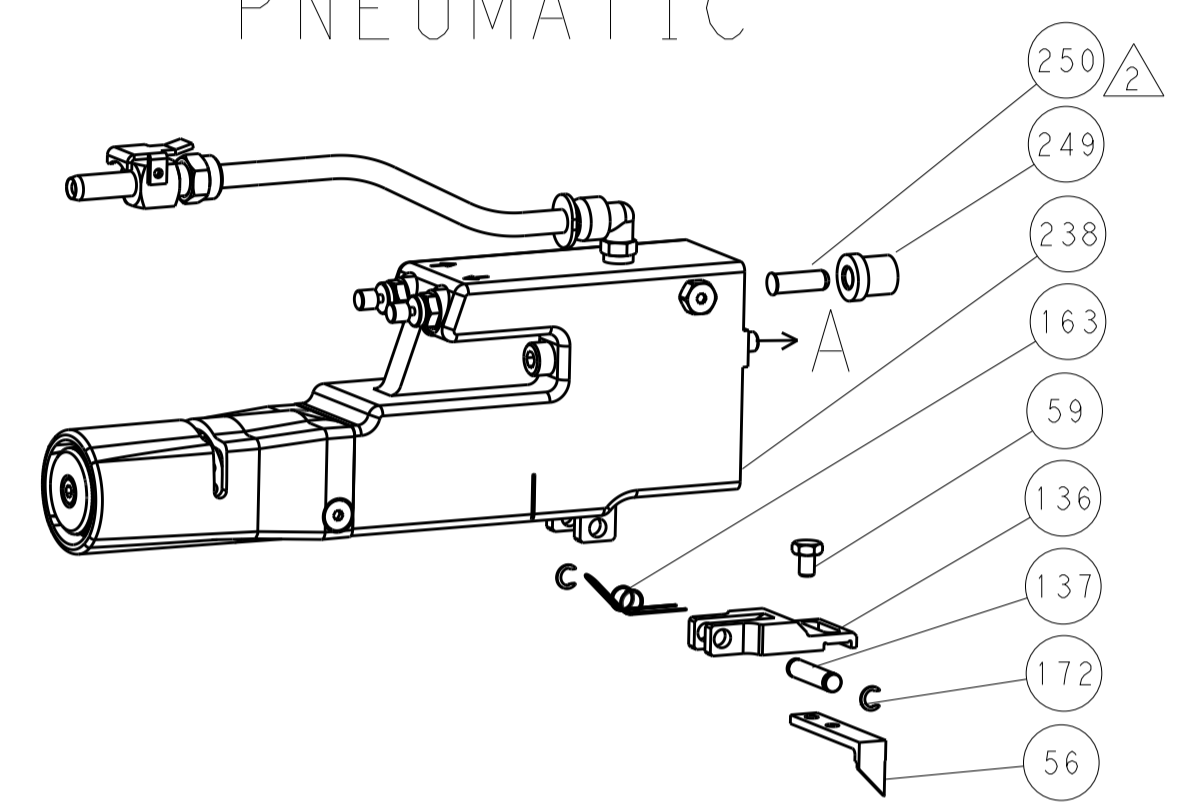
Customer Accessible Production Drawing	SCALE	SHEET	OF	REV
	1:2	3	4	F

LOC	DIST	REV	DATE	BY	APPV
A	66				
REVISIONS			DATE	BY	APPV
- SEE SHEET 1			-	-	-

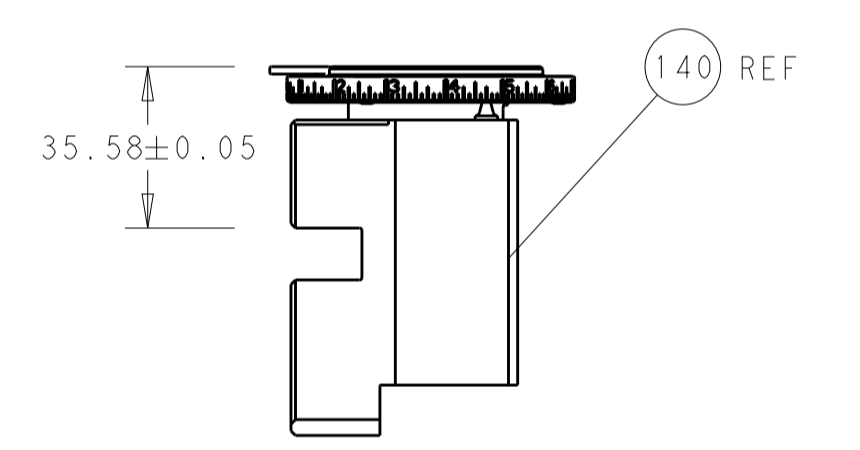
FEED TYPE MECHANICAL



PNEUMATIC

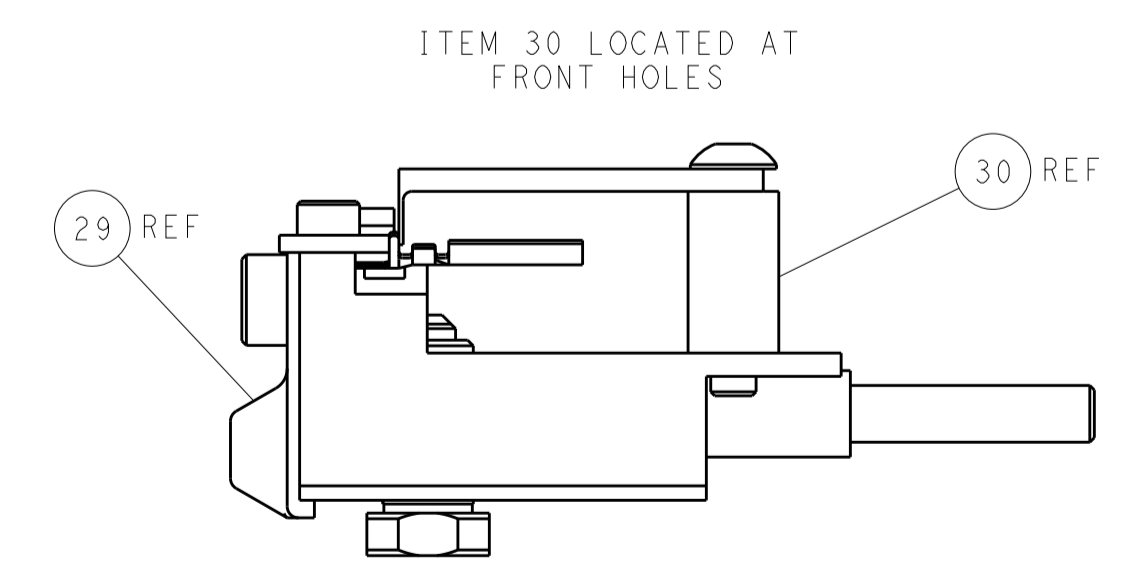
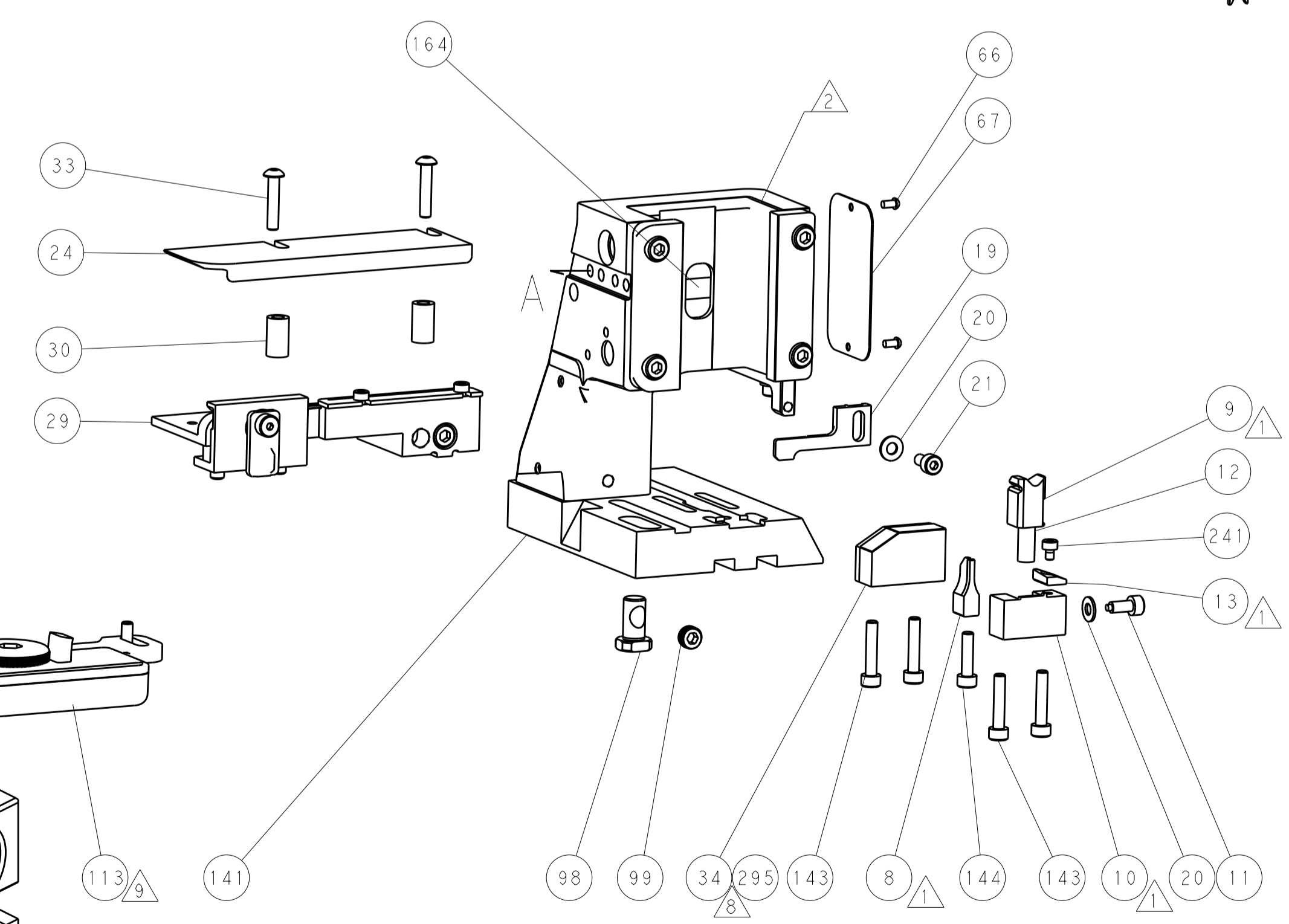
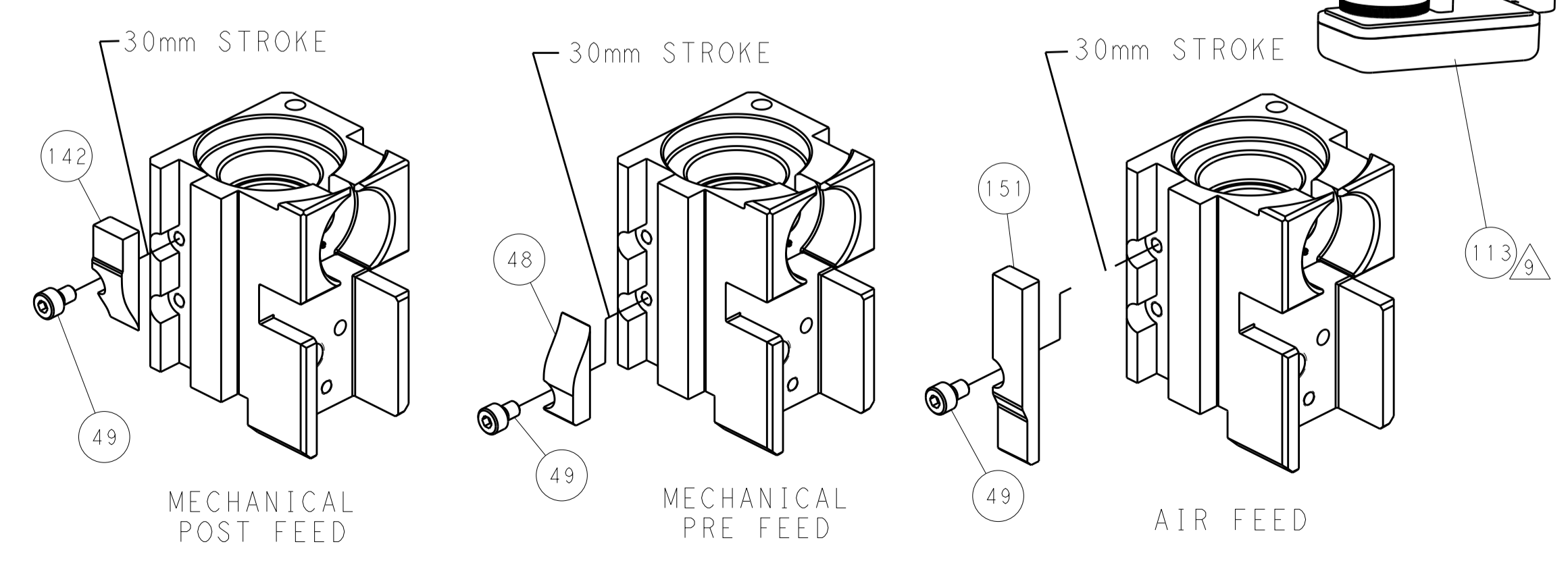


TERMINAL SUPPORT LOCATION



RAM SET-UP

CAM POSITIONS



FEED TRACK POSITION GUIDE BY INSULATION BARREL

PACIFIC VERSION
 Shown on sheets 3 of 4 & 4 of 4
 (Atlantic version shown on sheets 1 of 4 & 2 of 4)

DIMENSIONS:		TOLERANCES UNLESS OTHERWISE SPECIFIED:		DWN R. HUANG 09NOV2011		TE Connectivity	
mm	0 PLC ±	1 PLC ±	2 PLC ±	3 PLC ±	4 PLC ±	5 PLC ±	Harrisburg, PA 17105-3608
MATERIAL:		FINISH:		CHK S. XI 09NOV2011		NAME	
				APVD J. CRUZ 09NOV2011		Ocean Side Feed Applicator	
				PRODUCT SPEC		SIZE CAGE CODE DRAWING NO	
				APPLICATION SPEC		A1 00779 C=2151017	
				WEIGHT		RESTRICTED TO	
				Customer Accessible Production Drawing		SCALE 1:2 SHEET 4 OF 4 REV F	

单击下面可查看定价，库存，交付和生命周期等信息

[>>TE Connectivity\(泰科\)](#)