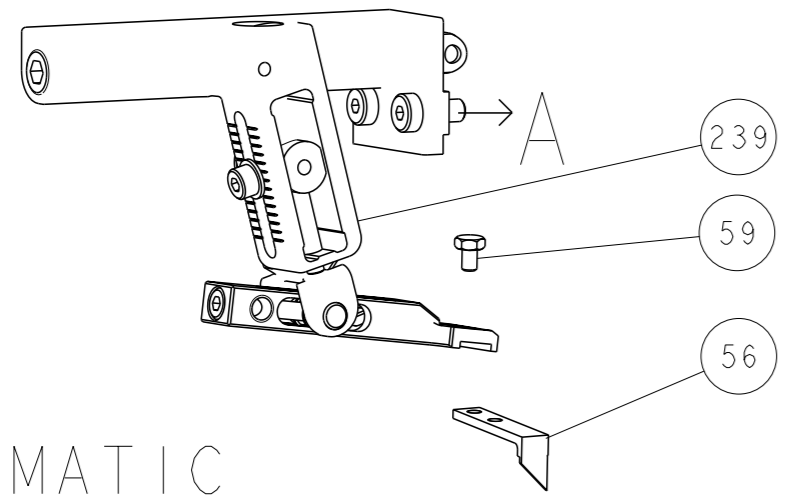
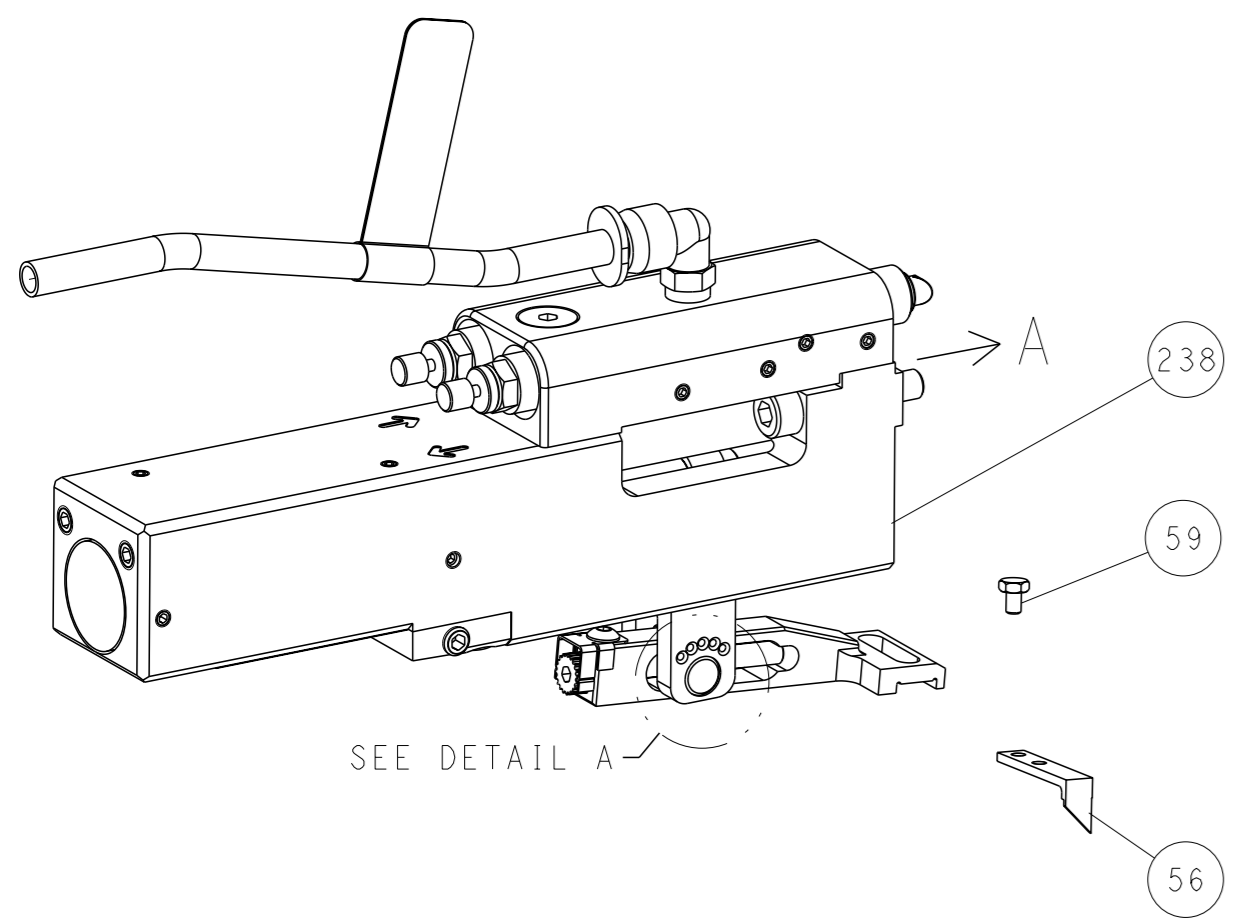


LOC	DIST	REV	DESCRIPTION	DATE	OWN	APVD
A	66	-	SEE SHEET 1	-	-	-

FEED TYPE MECHANICAL



PNEUMATIC

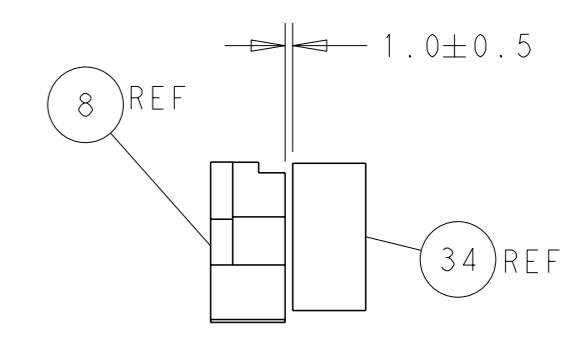
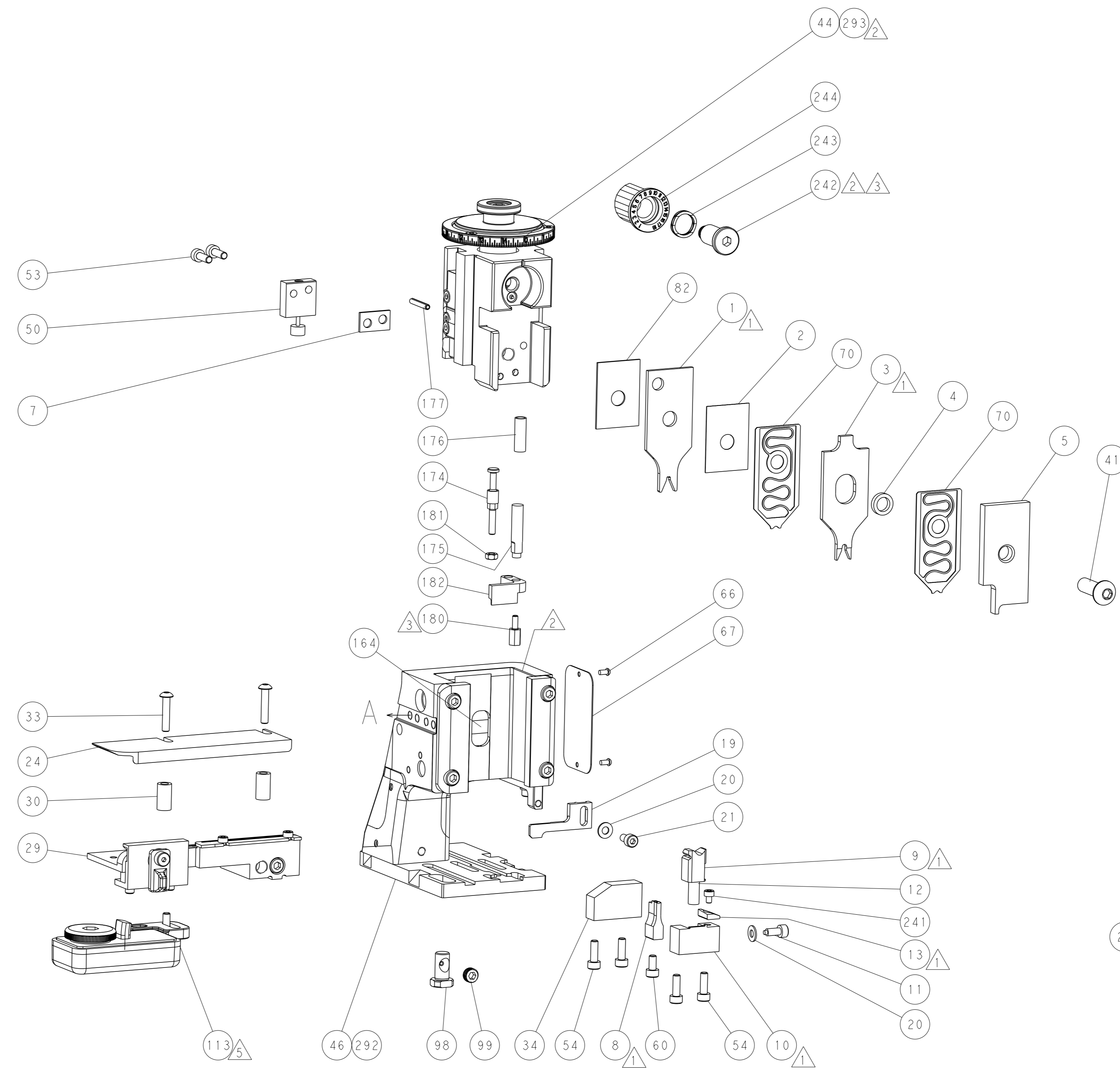
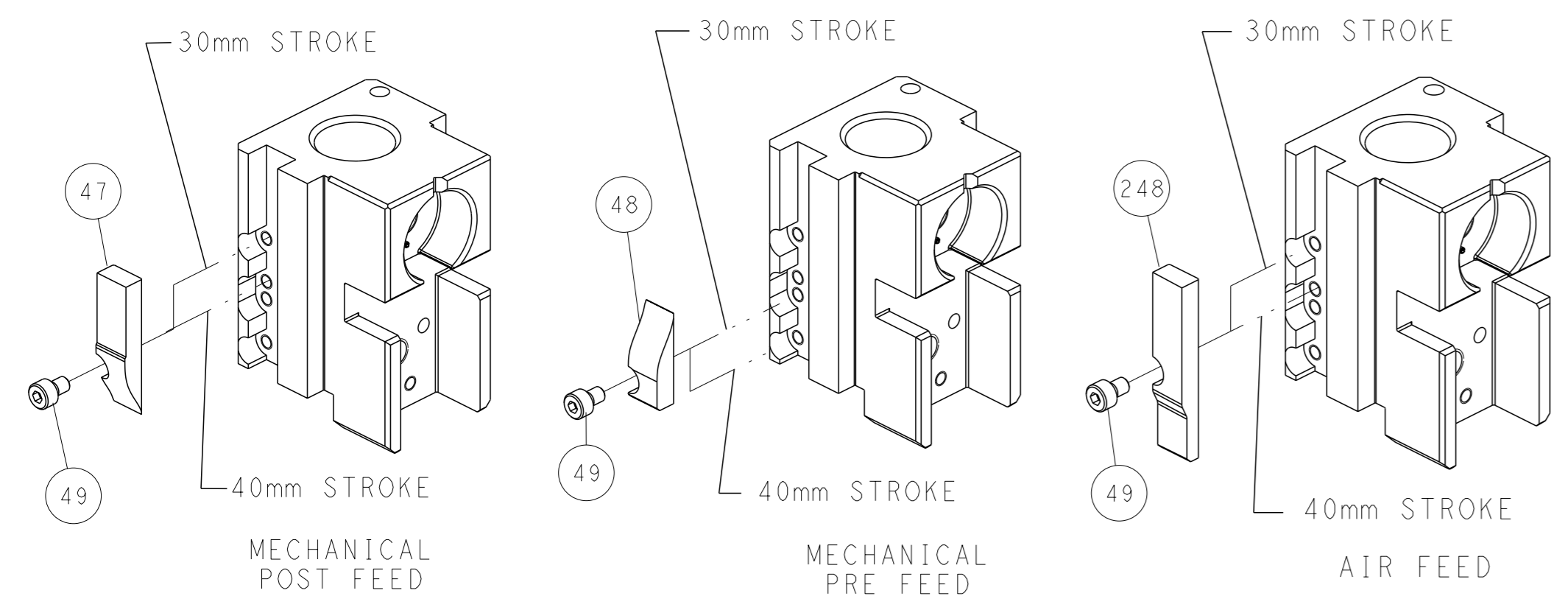


FEED SPRING SETTING POSITION (SHOWN FROM REAR SIDE)

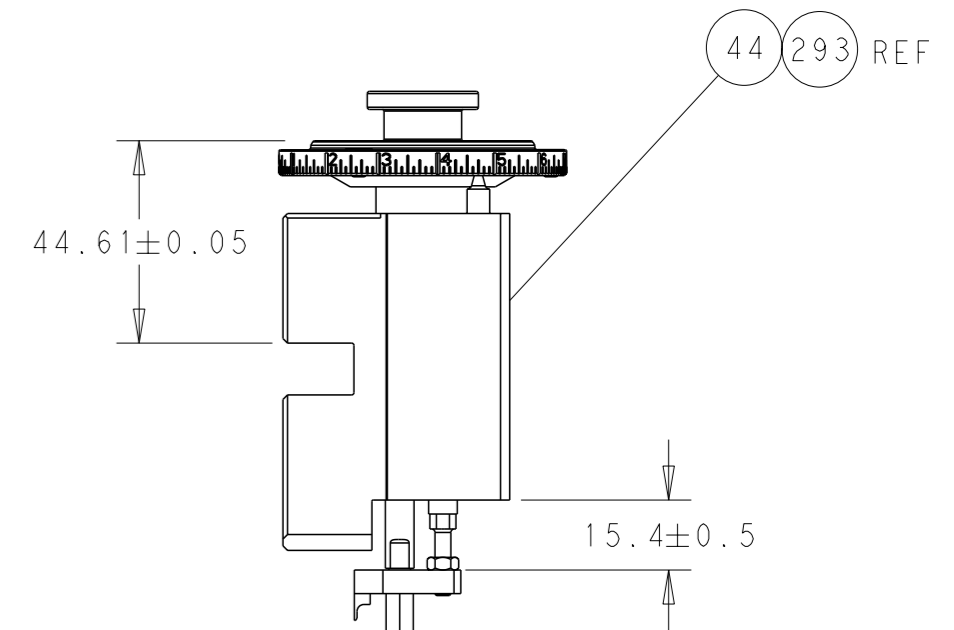


DETAIL A

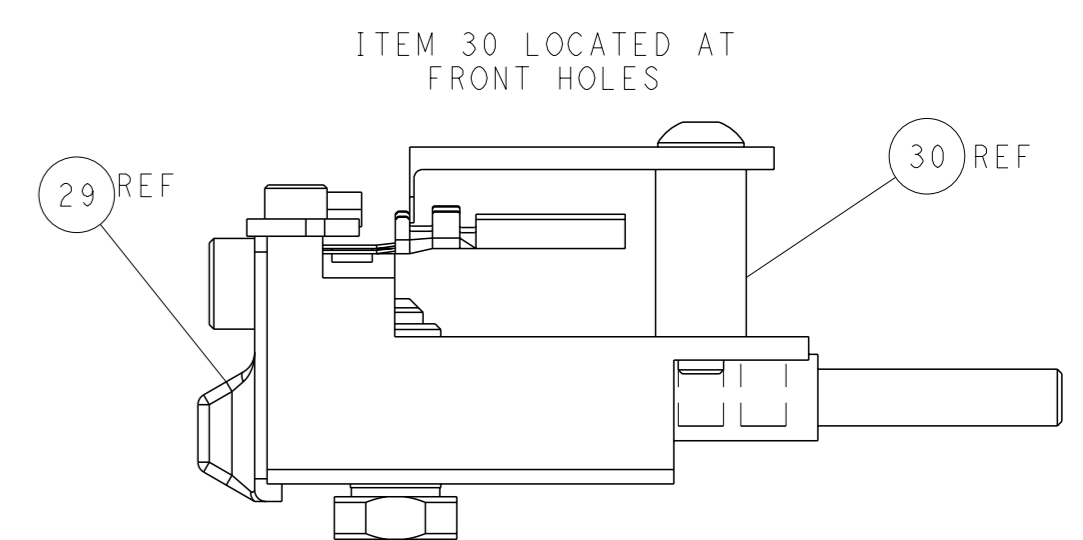
CAM POSITIONS



TERMINAL SUPPORT LOCATION



RAM SET-UP



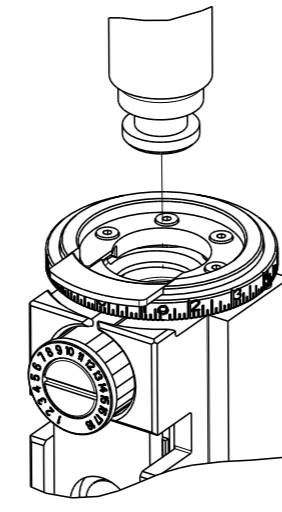
FEED TRACK POSITION GUIDE BY INSULATION BARREL

ATLANTIC VERSION
 Shown on sheets 1 of 4 & 2 of 4
 (Pacific version shown on sheets 3 of 4 & 4 of 4)

<small>THIS DRAWING IS A CONTROLLED DOCUMENT FOR TYCO ELECTRONICS CORPORATION. IT IS SUBJECT TO CHANGE AND THE CONTROL AND REVISIONS DISPOSITION SHOULD BE CONTACTED FOR THE LATEST REVISION.</small>		OWN: R. KNEPPER 03-Oct-13 CHK: G. BAILEY 03-Oct-13 APVD: M. CLIFFORD 03-Oct-13	NAME: Ocean Side Feed Applicator SIZE: A1 CAGE CODE: 00779 DRAWING NO: C=2266101	TE Connectivity Harrisburg, PA 17105-3608
DIMENSIONS: mm TOLERANCES UNLESS OTHERWISE SPECIFIED: 0 PLC ± 1 PLC ± 2 PLC ± 3 PLC ± 4 PLC ± ANGLES FINISH ±	WEIGHT: - SCALE: 1:2 SHEET: 2 of 4 REV: F	RESTRICTED TO: -	Customer Accessible Production Drawing	

PART NUMBER	REVISION	DESCRIPTION	FEED TYPE
2-2266101-1	F	FINE CRIMP HEIGHT ADJUST	MECHANICAL
2-2266101-2	F	FINE CRIMP HEIGHT ADJUST	PNEUMATIC
7-2266101-7	B	CRIMP TOOLING KIT	-
7-2266101-8	B	APPLICATOR CONVERSION KIT	-

PACIFIC VERSION TERMINATOR
INTERFACE ADAPTER



APPLICATOR DATA		
CRIMP	SIZE	TYPE
WIRE	2.29 mm [.090]	F
INSUL	2.79 mm [.110]	O

APPLICATOR INSTRUCTIONS
408-35042

APPLICATOR CONVERSION KITS	
PART NUMBER	INSULATION DIAMETER RANGE
7-2266100-8	Ø3.05-3.81mm [.120-.150]
7-2266101-8	Ø2.67-3.02mm [.105-.119]
7-2266102-8	Ø2.26-2.64mm [.089-.104]
7-2266103-8	Ø1.93-2.24mm [.076-.088]
7-2266104-8	Ø1.60-1.91mm [.063-.075]

TERMINAL DATA: DEUTSCH TERMINAL TE CRIMP SPECIFICATION

WIRE STRIP LENGTH	INSULATION DIAMETER RANGE
3.81-5.09 mm [.150-.200 IN]	Ø2.67-3.02 mm [.105-.119 IN]

TERMINAL APPLICATION SPECIFICATION	114-151000
-	-

TERMINALS APPLIED

TE TERMINAL	DEUTSCH TERMINAL	TE TERMINAL	DEUTSCH TERMINAL
286505-1	1060-14-0122	286505-2	1060-14-0144
286505-3	1060-14-0177	285505-5	1060-14-1077
286505-6	1060-14-1088	286503-1	1060-16-0122
286503-2	1060-16-0144	286503-3	1060-16-0177
286503-7	1060-16-0722	286503-8	1060-16-0744
286503-9	1060-16-0777	1-286503-1	1060-16-0977
1-286503-2	1060-16-0988	1-286503-4	AT60-16-0122
1-286503-5	AT60-16-0144		

TERMINAL DATA: DEUTSCH TERMINAL TE CRIMP SPECIFICATION

WIRE STRIP LENGTH	INSULATION DIAMETER RANGE
3.81-5.09 mm [.150-.200 IN]	Ø2.67-3.02 mm [.105-.119 IN]

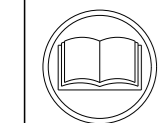
TERMINAL APPLICATION SPECIFICATION	114-151000
-	-

TERMINALS APPLIED

TE TERMINAL	DEUTSCH TERMINAL	TE TERMINAL	DEUTSCH TERMINAL
286506-1	1062-14-0122	286506-2	1062-14-0144
286506-3	1062-14-0177	286506-7	AT62-14-0122
286506-5	1062-14-1077	286506-6	1062-14-1088
286504-1	1062-16-0122	286504-2	1062-16-0144
286504-3	1062-16-0177	286504-7	1062-16-0722
286504-8	1062-16-0744	286504-9	1062-16-0777
1-286504-1	1062-16-0977	1-286504-2	1062-16-0988
1-286504-5	AT62-16-0122	1-286504-6	AT62-16-0144

WIRE SIZE	CRIMP HEIGHT mm [INCH]	CRIMP HEIGHT REFERENCE SETTING
14 AWG	1.40+0.03/-0.05 [1.055+.001/- .002]	5.2
2.00mm2	1.40+0.03/-0.05 [1.055+.001/- .002]	5.4
1.50mm2	1.35+0.03/-0.05 [1.053+.001/- .002]	5.7
16 AWG	1.27+0.03/-0.05 [1.050+.001/- .002]	6.5
1.00mm2	1.27+0.03/-0.05 [1.050+.001/- .002]	6.6
18 AWG	1.24+0.03/-0.05 [1.049+.001/- .002]	6.9
0.75mm2	1.22+0.03/-0.05 [1.048+.001/- .002]	7.1

***WARNING**
ON INSTALLATION, SET WIRE DISC TO CRIMP HEIGHT REFERENCE SETTING FOR LARGEST WIRE SIZE. CRIMP HEIGHT REFERENCE SETTINGS GREATER THAN THE VALUE SHOWN MAY CAUSE DAMAGE TO THE CRIMP TOOLING. REFER TO THE INSTRUCTION SHEET FOR PROPER SETUP AND ADJUSTMENTS.



- RECOMMENDED SPARE PARTS
- REFER TO SUPPLIED INSTRUCTION SHEET FOR CLEANING, LUBRICATION AND STORAGE OF APPLICATOR.
- APPLY PART NUMBER 2-23419-6 LOCTITE TO THREADS OF ITEM 242.
- CRIMP HEIGHT REFERENCE SETTING WAS THE SETTING USED WHEN THE APPLICATOR WAS QUALIFIED AT THE FACTORY. ADJUSTMENT MAY BE NECESSARY WHEN RUNNING APPLICATOR IN THE FIELD.
- TERMINAL LUBRICANT IS RECOMMENDED.
- UNLESS SPECIFIED OTHERWISE TORQUE VALUES SHALL BE USED PER DOCUMENT, 101-35000.
- SEE APPROPRIATE APPLICATOR LOG SHEETS FOR APPLIED TERMINALS AND WIRE RANGE.

LOC	DIST	REV	DATE	BY	APPV
A	66				

QTY	REV	LOC	DIST	REV	DATE	BY	APPV	DESCRIPTION	ITEM NO
-	-	1	1					2119082-9 CAM, SNAIL, INSULATION ADJUSTMENT	244
-	-	1	1					2079764-1 WASHER, WAVE SPRING, CREST-TO-CREST	243
-	-	1	1					2119083-1 RETAINER, INSULATION DIAL	242
-	-	1	1					7-18023-7 SCR, SKT HD CAP M3 X 4.0	241
-	-	-	1					2119580-1 MECHANICAL FEED ASSEMBLY	239
-	-	1	-					2844940-1 AIR FEED MODULE	238
-	-	REF	REF					994970-2 COUNTER, MAGNETIC	164
-	-	1	-					2119641-2 FEED CAM, AIR FEED	151
-	-	1	1					2168083-8 SCR, SKT HD CAP, RoHS, M4 X 16	144
-	-	4	4					2168083-9 SCR, SKT HD CAP, RoHS, M4 X 20	143
-	-	-	1					2119653-2 FEED CAM, POST FEED	142
-	-	1	1					1-1803583-0 APPLICATOR BASIC ASSEMBLY, SF	141
-	-	1	1					1803516-1 RAM ASSEMBLY, SF PACIFIC	140
-	-	1	1					2119955-1 ASSY, LUBRICATOR, SIDE FEED	113
-	-	1	1					2844908-1 SCREW, LOCKING	99
-	-	1	1					2844907-1 POST, LOCKING	98
1	-	1	1					455888-8 SPACER, CRIMPER	82
1	-	-	-					2266101 PRINT, APPLICATOR LOG SHEET	72
-	-	1	1					1803607-3 DOCUMENTATION PACKAGE	71
-	-	2	2					2119791-9 DEPRESSOR, WIRE	70
-	-	1	1					2119740-1 TAG, IDENTIFICATION	67
-	-	2	2					2168078-1 SCREW, DRIVE, RH, RoHS, 2 x .188	66
-	-	1	1					5-18022-5 SCR, HEX HD CAP, M4 X 6.0	59
-	-	1	1					1338685-1 PAWL, FEED	56
-	-	2	2					2168083-3 SCR, SKT HD CAP, RoHS, M4 X 12.0	53
-	-	1	1					1803382-6 HOLD DOWN, SPRING LOADED	50
-	-	1	2					18023-9 SCR, SKT HD CAP M4 X 6.0	49
-	-	-	1					2119652-1 FEED CAM, PRE FEED	48
-	-	1	1					1803602-1 SCR, BHSC, RoHS (M8 X 25)	41
-	-	1	1					1752356-1 SUPPORT, TERMINAL	34
-	-	2	2					2079383-5 SCR, BHSC, RoHS (M4 X 20)	33
-	-	2	2					2-2844962-8 SPACER, CYLINDRICAL, STRIP GUIDE	30
-	-	1	1					2844992-1 ASSEMBLY, STRIP GUIDE	29
-	-	1	1					1320928-2 STRIP GUIDE	24
-	-	1	1					2168083-2 SCR, SKT HD CAP, RoHS, M4 X 8.0	21
-	-	2	2					1-18028-2 WASHER, FLAT, REG M4	20
-	-	1	1					2119533-1 STRIPPER, SIDE FEED	19
-	-	1	1					2119806-1 INSERT, SHEAR	13
-	-	1	1					3-22280-3 SPRING, COMPRESSION	12
-	-	1	1					1-356885-4 STOP, SHEAR	11
-	-	1	1					2119805-1 SHEAR HOLDER, FRONT	10
-	-	1	1					1803095-1 FLOATING SHEAR, FRONT	9
1	1	1	1					1803293-2 ANVIL, COMBINATION DEUTSCH STYLE	8
-	-	1	1					3-240641-9 SPACER	7
-	-	-	-					-	6
-	-	1	1					2119757-8 DEPRESSOR, SHEAR	5
-	-	1	1					238011-9 BLOCK, CRIMPER SPACER	4
1	1	1	1					1803019-4 CRIMPER, INSULATION O	3
1	-	1	1					455888-3 SPACER, CRIMPER	2
-	-	1	1					2-1633713-6 CRIMPER, WIRE PREMIUM	1

PACIFIC VERSION
Shown on sheets 3 of 4 & 4 of 4
(Atlantic version shown on sheets 1 of 4 & 2 of 4)

DIMENSIONS:		TOLERANCES UNLESS OTHERWISE SPECIFIED:		MATERIAL:	
mm	0 PLC ±	1 PLC ±	2 PLC ±	3 PLC ±	4 PLC ±
	ANGLES	FINISH			

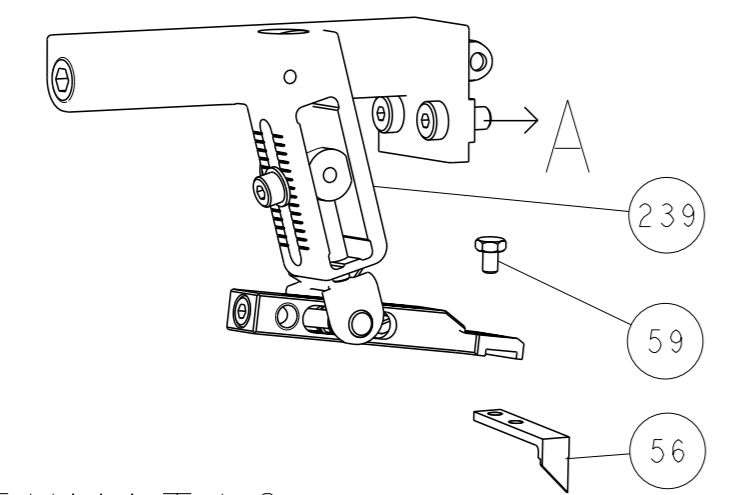
OWN	CHK	DATE	NAME
R. KNEPPER	G. BAILEY	03-Oct-13	M. CLIFFORD

SIZE	CAGE CODE	DRAWING NO	RESTRICTED TO
A1	00779	2266101	-

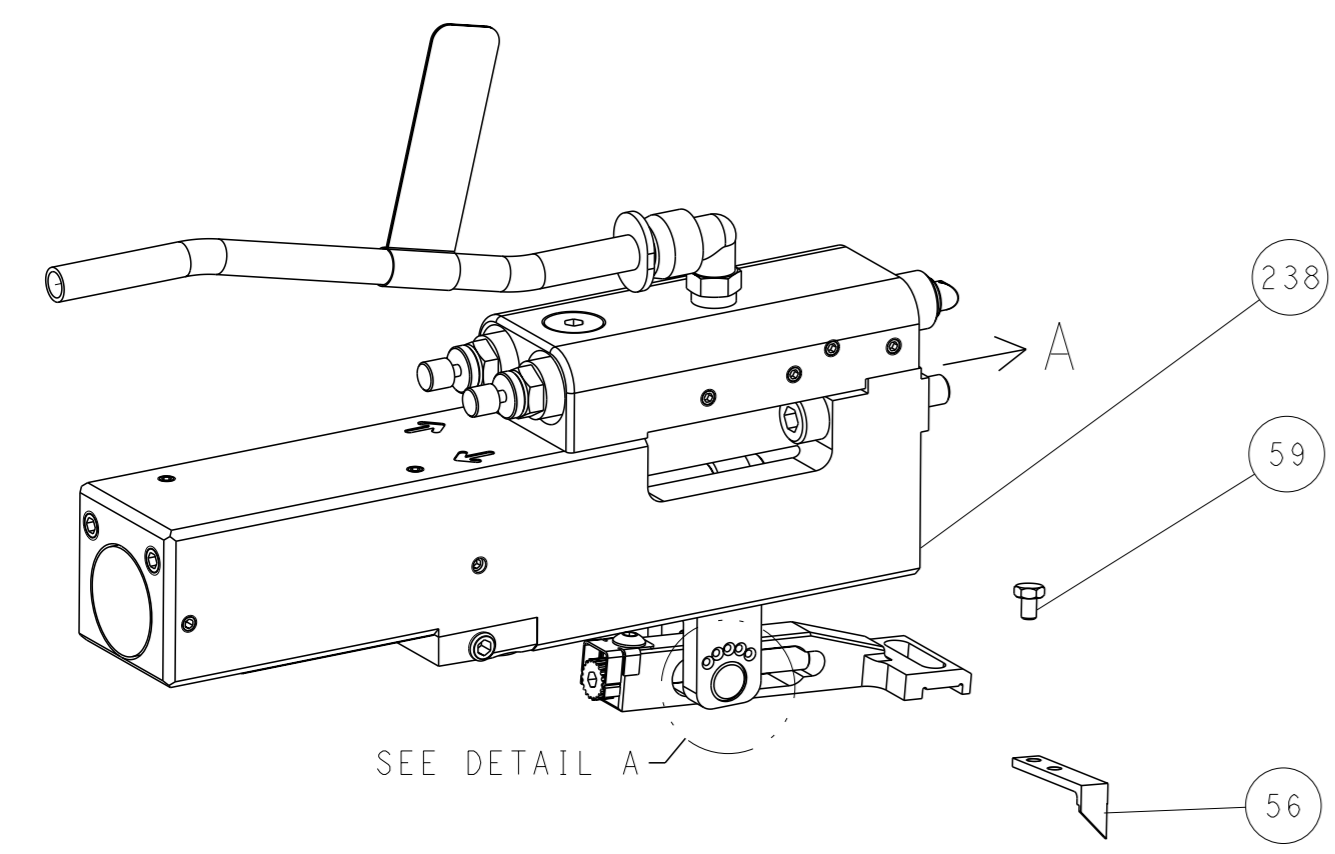
Customer Accessible Production Drawing SCALE 1:2 SHEET 3 OF 4 REV F

REVISONS		DATE	OWN	APVD
LOC	DIST			
A	66			
P	LYR			
		SEE SHEET 1		

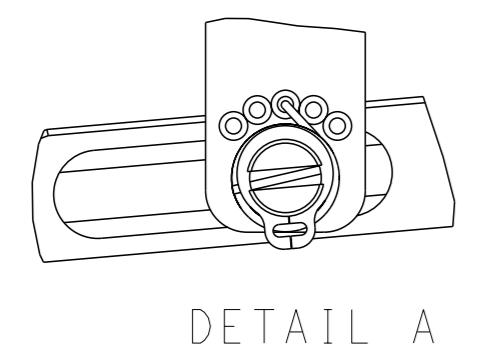
FEED TYPE MECHANICAL



PNEUMATIC

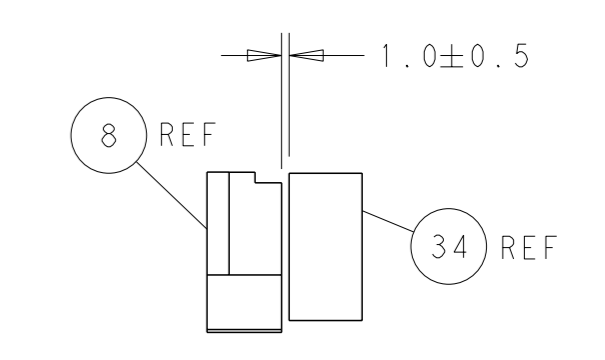
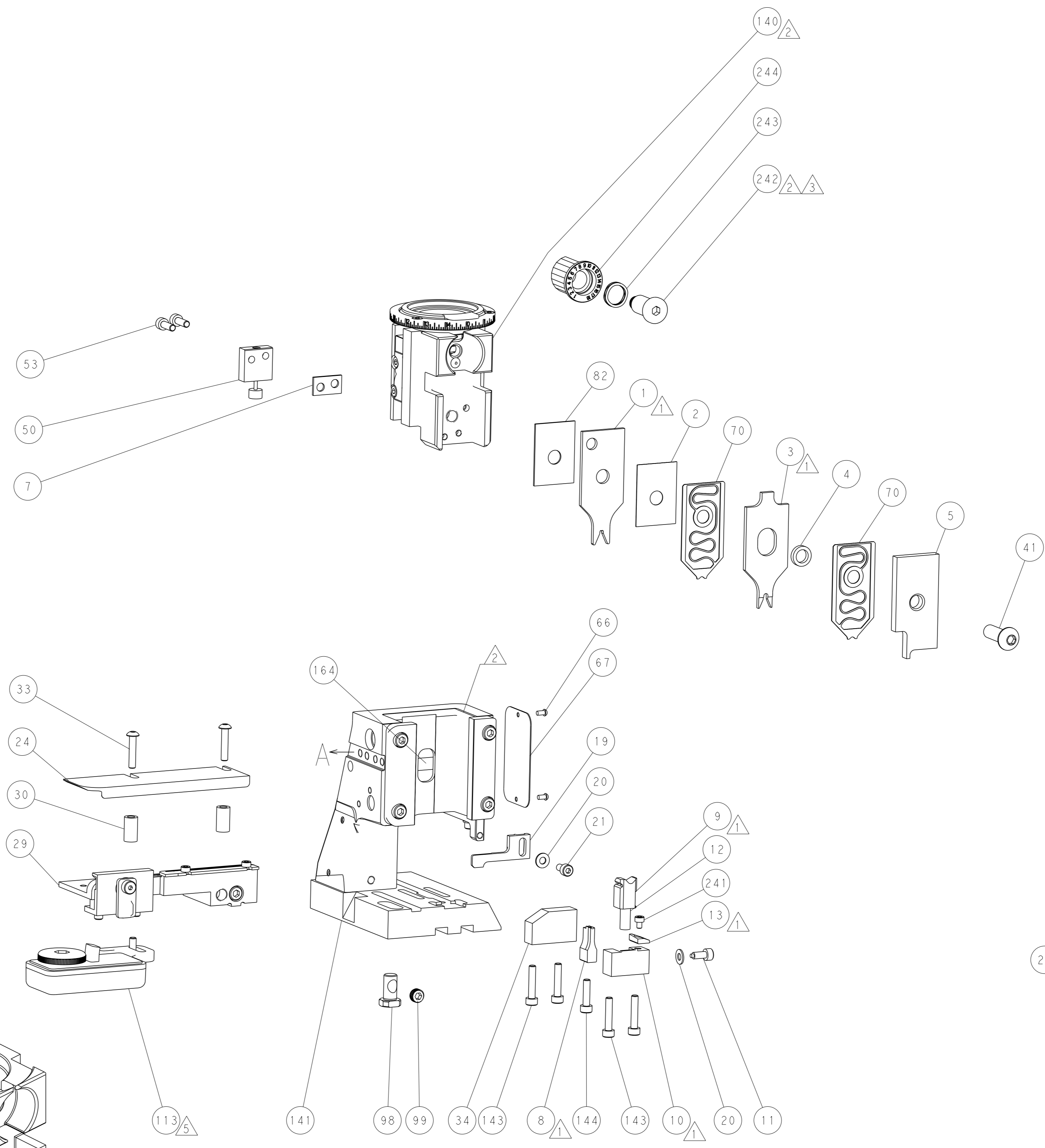
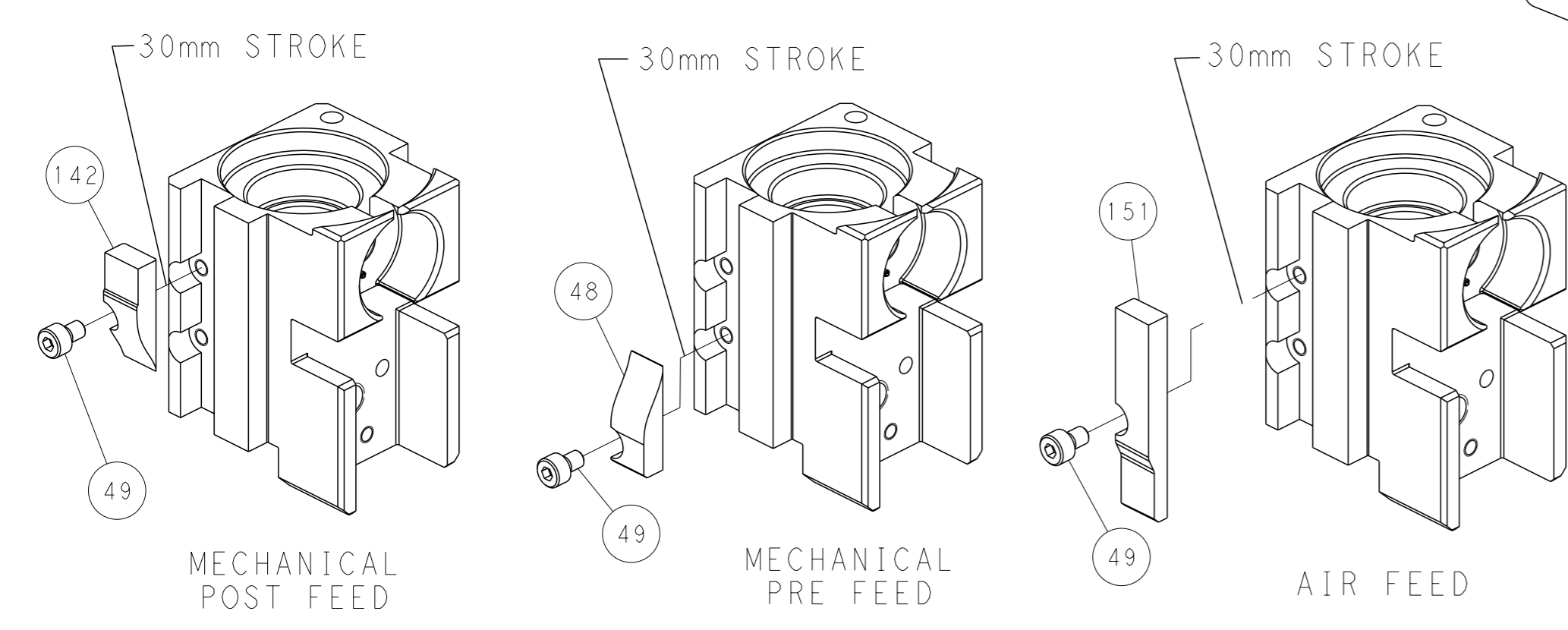


FEED SPRING SETTING POSITION (SHOWN FROM REAR SIDE)

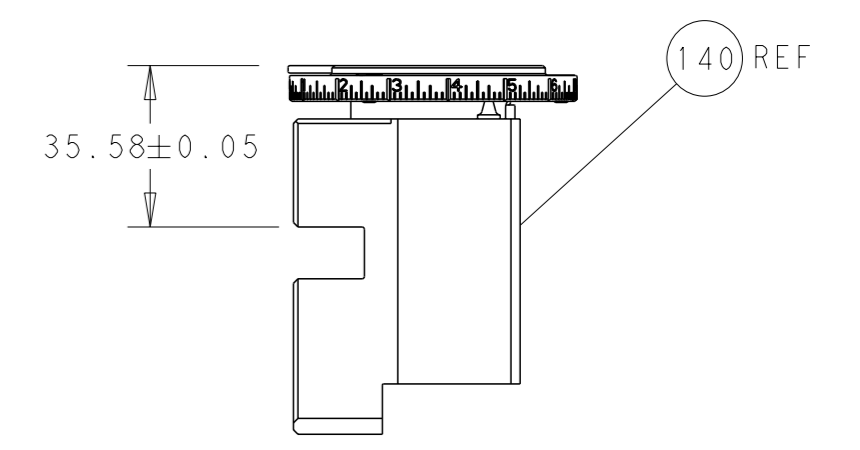


DETAIL A

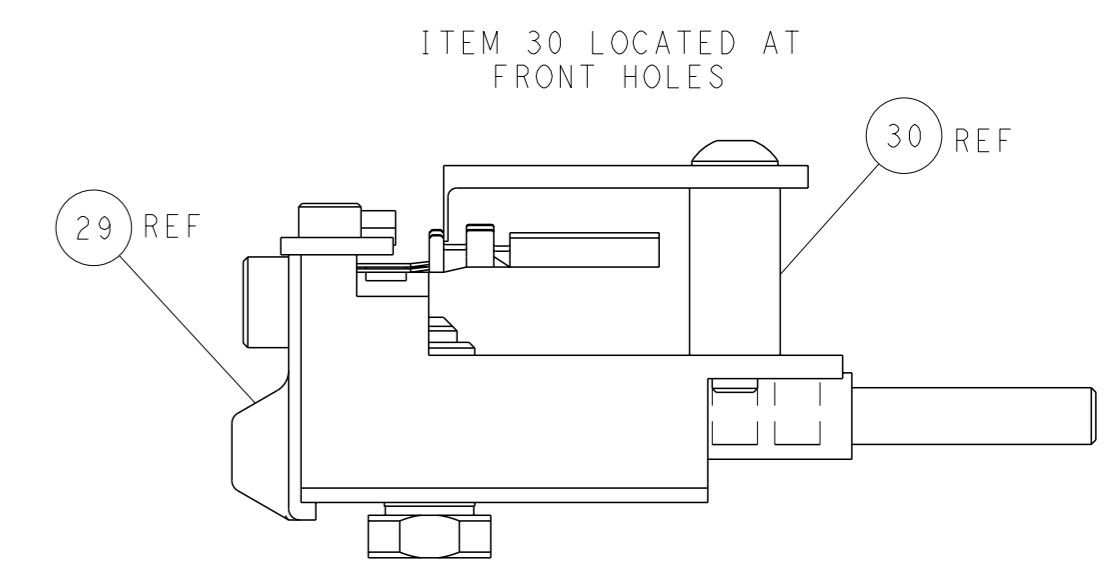
CAM POSITIONS



TERMINAL SUPPORT LOCATION



RAM SET-UP



FEED TRACK POSITION GUIDE BY INSULATION BARREL

PACIFIC VERSION
 Shown on sheets 3 of 4 & 4 of 4
 (Atlantic version shown on sheets 1 of 4 & 2 of 4)

DIMENSIONS: mm 		TOLERANCES UNLESS OTHERWISE SPECIFIED: 0 PLC ± 1 PLC ± 2 PLC ± 3 PLC ± 4 PLC ± ANGLES ± FINISH ±		DWG: R. KNEPPER 03-Oct-13 CHK: G. BAILEY 03-Oct-13 APVD: M. CLIFFORD 03-Oct-13 PRODUCT SPEC APPLICATION SPEC WEIGHT SCALE: 1:2		NAME: Ocean Side Feed Applicator SIZE: A1 CAGE CODE: 00779 DRAWING NO: C=2266101 SHEET: 4 of 4 REV: F	
MATERIAL:				RESTRICTED TO:		CUSTOMER ACCESSIBLE PRODUCTION DRAWING	

单击下面可查看定价，库存，交付和生命周期等信息

[>>TE Connectivity\(泰科\)](#)