

Precision Adjustable Power Distribution Switch

FEATURES

- Integrated 60mΩ Power MOSFET
- Adjustable Current Limit 0.3A to 3.5A (typ.)
- Low Supply Current
- 30μA Typical at Switch On State
- 1μA Typical at Switch Off State
- Wide Input Voltage Range: 2.5V to 5.5V
- Fast Transient Response: 8μs
- 0.1ms Typical Rise Time
- Reverse Current Flow Blocking
- Deglitched Open-Drain Over-Current Flag Output (TMI6260C and TMI6260D)
- Thermal Shutdown Protection
- Hot Plug-In Application (Soft-Start)
- SOT-23-5/SOT-23-6/DFN2x2-6L Package

APPLICATIONS

- USB Bus/Self Powered Hubs
- Battery-Charger Circuits
- Personal Communication Devices
- Notebook Computers

GENERAL DESCRIPTION

The TMI6260X is a cost-effective, low voltage, single P-MOSFET load switch, optimized for self-powered and bus-powered Universal Serial Bus (USB) applications. This switch operates with inputs ranging from 2.5V to 5.5V, making it ideal for both 3V and 5V systems. The switch's low $R_{DS(ON)}$, 60mΩ, meets USB voltage drop requirements. A built-in P-channel MOSFET with true shutdown function to eliminate any reversed current flow across the switch when it is powered off. When the output voltage is higher than input voltage, the power switch is turned off by internal output reverse-voltage comparator.

The TMI6260X offers a programmable current limit threshold via an external resistor on ILIM pin to GND. nFLG is an open-drain output report over-current or over temperature event. In addition, nFLG also has typical 2.5ms deglitch timeout period and reports output reverse-voltage condition.

TYPICAL APPLICATION

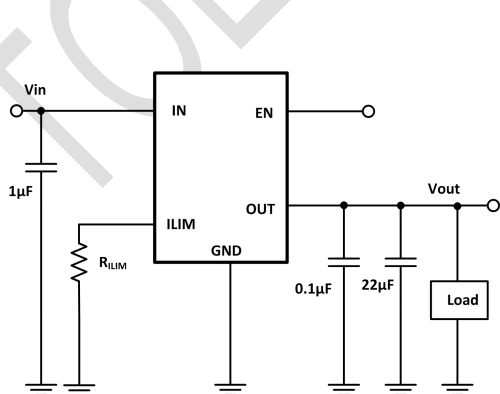


Figure 1. TMI6260A/B Application Circuit

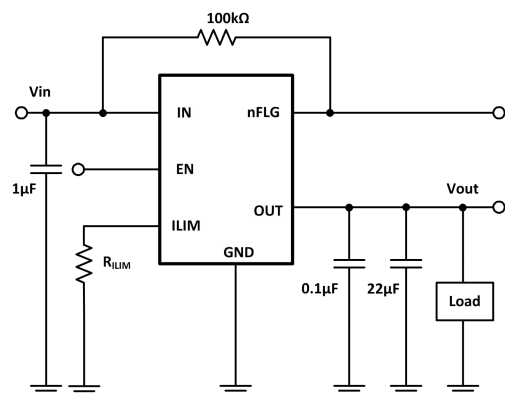


Figure 2. TMI6260C/D Application Circuit

单击下面可查看定价，库存，交付和生命周期等信息

[>>TMI](#)