



U74LVC08A

CMOS IC

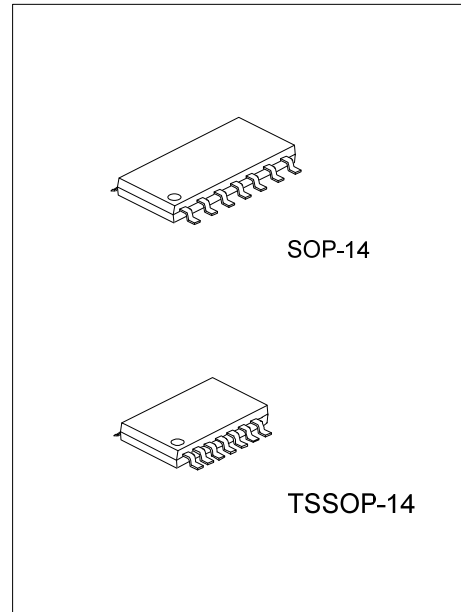
QUAD 2-INPUT AND GATE

DESCRIPTION

The **U74LVC08A** contains four independent 2-input AND gates, perform the Boolean function $Y = A \cdot B$ in positive logic.

FEATURES

- * Operate From 1.65V to 3.6V
- * Direct Interface with TTL Levels
- * Low Power Dissipation
- * Inputs Accept Voltages up to 5.5V
- * Partial-Power-Down Mode Operation

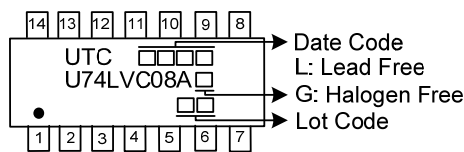


ORDERING INFORMATION

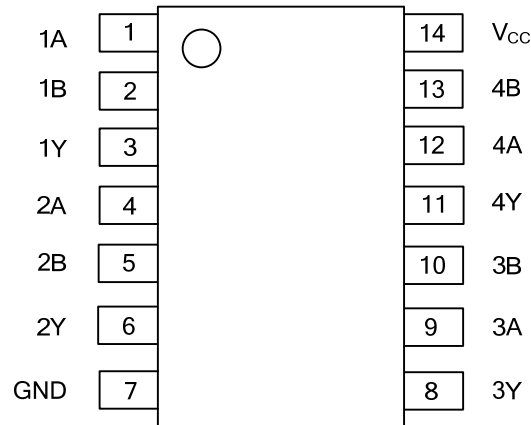
Ordering Number		Package	Packing
Lead Free	Halogen Free		
U74LVC08AL-S14-R	U74LVC08AG-S14-R	SOP-14	Tape Reel
U74LVC08AL-P14-R	U74LVC08AG-P14-R	TSSOP-14	Tape Reel

<p>U74LVC08AG-S14-R</p> <p>(1) Packing Type (2) Package Type (3) Green Package</p>	<p>(1) R: Tape Reel (2) P14: TSSOP-14, S14: SOP-14 (3) G: Halogen Free and Lead Free, L: Lead Free</p>
--	--

MARKING



■ PIN CONFIGURATION

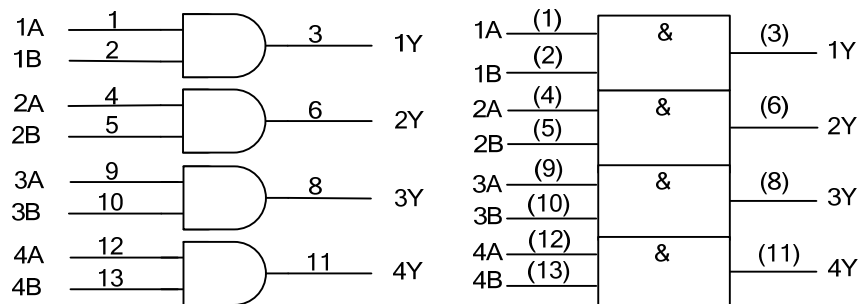


■ FUNCTION TABLE (Each Gate)

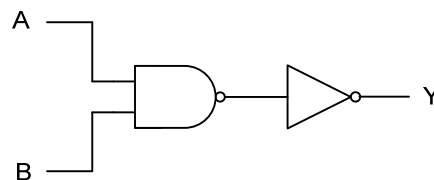
INPUT(nA)	INPUT(nB)	OUTPUT(nY)
H	H	H
H	L	L
L	H	L
L	L	L

Note: H: HIGH voltage level; L: LOW voltage level.

■ LOGIC DIAGRAM (Positive Logic)



■ LOGIC DIAGRAM



■ ABSOLUTE MAXIMUM RATING

PARAMETER	SYMBOL	RATINGS	UNIT
Supply Voltage	V_{CC}	-0.5 ~ +6.5	V
Input Voltage	V_{IN}	-0.5 ~ +6.5	V
Output Voltage	V_{OUT}	-0.5 ~ $V_{CC} + 0.5$	V
V_{CC} or GND Current	I_{CC}	±100	mA
Continuous Output Current ($V_{OUT}=0$ to V_{CC})	I_{OUT}	±50	mA
Input Clamp Current ($V_{IN} < 0$)	I_{IK}	-50	mA
Output Clamp Current ($V_{OUT} < 0$)	I_{OK}	-50	mA
Power Dissipation ($T_{OPR} = -40^{\circ}\text{C} \sim +125^{\circ}\text{C}$)	P_D	500	mw
Storage Temperature	T_{STG}	-65 ~ + 150	$^{\circ}\text{C}$

Note: Absolute maximum ratings are those values beyond which the device could be permanently damaged. Absolute maximum ratings are stress ratings only and functional device operation is not implied.

■ RECOMMENDED OPERATING CONDITIONS

PARAMETER	SYMBOL	RATINGS	UNIT
Supply Voltage	V_{CC}	+1.65 ~ 3.6	V
Input Voltage	V_{IN}	0 ~ 5.5	V
Output Voltage (High or Low state)	V_{OUT}	0 ~ V_{CC}	V
Input Rise or Fall Times	t_R / t_F	8	ns/V
Ambient Operating Temperature	T_A	-40 ~ +125	$^{\circ}\text{C}$

■ THERMAL DATA

PARAMETER	SYMBOL	RATINGS	UNIT
Junction to Ambient	θ_{JA}	86	$^{\circ}\text{C}/\text{W}$
		113	$^{\circ}\text{C}/\text{W}$

■ ELECTRICAL CHARACTERISTICS (T_A=25°C , unless otherwise specified)

PARAMETER	SYMBOL	TEST CONDITIONS	MIN	TYP	MAX	UNIT	
High-Level Input Voltage	V _{IH}	V _{CC} = 1.65V~1.95V	0.65× V _{CC}			V	
		V _{CC} = 2.3V ~ 2.7V	1.7			V	
		V _{CC} = 2.7V ~ 3.6V	2				
Low-Level Input Voltage	V _{IL}	V _{CC} = 1.65V~1.95V			0.35× V _{CC}	V	
		V _{CC} = 2.3V ~ 2.7V			0.7	V	
		V _{CC} = 2.7V ~ 3.6V			0.8		
High-Level Output Voltage	V _{OH}	V _{CC} =1.65V~3.6V, I _{OH} =-100μA	V _{CC} -0.2			V	
		V _{CC} =1.65V, I _{OH} =-4mA	1.29			V	
		V _{CC} =2.3V, I _{OH} =-8mA	1.9				
		V _{CC} =2.7V	I _{OH} =-12mA	2.2			V
		V _{CC} =3.0V		2.4			
		V _{CC} =3.0V, I _{OH} =-24mA	2.3			V	
Low-Level Output Voltage	V _{OL}	V _{CC} =1.65V~3.6V, I _{OL} =100μA			0.1	V	
		V _{CC} =1.65V, I _{OL} =-4mA			0.24	V	
		V _{CC} =2.3V, I _{OL} =-8mA			0.3		
		V _{CC} =2.7V, I _{OL} =12mA			0.4		
		V _{CC} =3.0V, I _{OL} =24mA			0.55	V	
Input Leakage Current	I _{I(LEAK)}	V _{CC} =3.6V, V _I =5.5V or GND			±1	μA	
Quiescent Supply Current	I _Q	V _{CC} =3.6V, V _{IN} =5.5V or GND I _{OUT} =0			1	μA	
Additional Quiescent Supply Current Per Input Pin	ΔI _Q	V _{CC} =2.7V~3.6V, One input at V _{IN} =V _{CC} - 0.6V, other input at V _{CC} or GND			500	μA	
Input Capacitance	C _{IN}	V _{IN} = V _{CC} or GND, V _{CC} = 3.3V		5		pF	

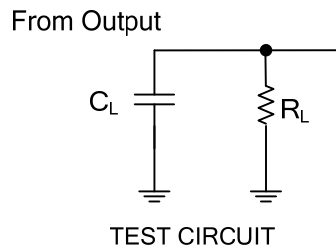
■ SWITCHING CHARACTERISTICS

PARAMETER	SYMBOL	TEST CONDITIONS	MIN	TYP	MAX	UNIT	
Propagation delay from input (nA or nB) to output(nY)	t _{PD}	V _{CC} =1.8V±0.15V, C _L =30pF, R _L =1kΩ	1	7	13	ns	
		V _{CC} =2.5V±0.2V, C _L =30pF, R _L =500Ω	1	5.9	9.8		
		V _{CC} =2.7V	C _L =50 pF, R _L =500Ω	1	5		7.6
		V _{CC} =3.3V±0.3V		1	4.1		5.9

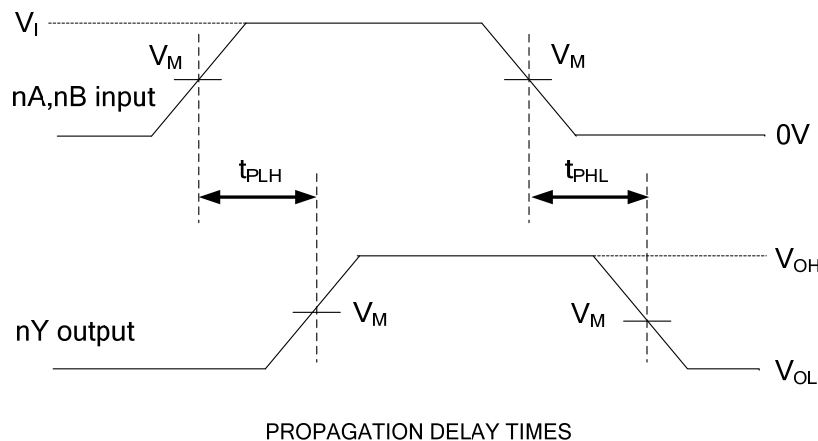
■ OPERATING CHARACTERISTICS

PARAMETER	SYMBOL	TEST CONDITIONS	MIN	TYP	MAX	UNIT
Power Dissipation Capacitance	C _{PD}	f =1MHz, No load	V _{CC} =1.8V		7	pF
			V _{CC} =2.5V		9.8	
			V _{CC} =3.3V		10	

■ TEST CIRCUIT AND WAVEFORMS



V_{CC}	Inputs		V_M	C_L	R_L
	V_{IN}	t_R, t_F			
$V_{CC}=1.8V\pm0.15V$	V_{CC}	$\leq 2ns$	$V_{CC}/2$	30pF	1k Ω
$V_{CC}=2.5V\pm0.2V$	V_{CC}	$\leq 2ns$	$V_{CC}/2$	30pF	500 Ω
$V_{CC}=2.7V$	2.7V	$\leq 2.5ns$	1.5V	50pF	500 Ω
$V_{CC}=3.3V\pm0.3V,$	2.7V	$\leq 2.5ns$	1.5V	50pF	500 Ω



Notes: 1. C_L includes probe and jig capacitance.

2. All input pulses are supplied by generators having the following characteristics:

PRR $\leq 10MHz$, $Z_o = 50\Omega$, $t_R \leq 2.5ns$, $t_F \leq 2.5ns$.

UTC assumes no responsibility for equipment failures that result from using products at values that exceed, even momentarily, rated values (such as maximum ratings, operating condition ranges, or other parameters) listed in products specifications of any and all UTC products described or contained herein. UTC products are not designed for use in life support appliances, devices or systems where malfunction of these products can be reasonably expected to result in personal injury. Reproduction in whole or in part is prohibited without the prior written consent of the copyright owner. UTC reserves the right to make changes to information published in this document, including without limitation specifications and product descriptions, at any time and without notice. This document supersedes and replaces all information supplied prior to the publication hereof.

单击下面可查看定价，库存，交付和生命周期等信息

[>>UTC\(友顺\)](#)