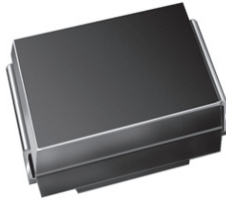


## Surface Mount Power Voltage-Regulating Diodes



SMB (DO-214AA)



**RoHS**  
COMPLIANT  
HALOGEN  
**FREE**  
Available

### FEATURES

- Low profile package
- Ideal for automated placement
- Glass passivated chip junction
- Low Zener impedance
- Low regulation factor
- Meets MSL level 1, per J-STD-020, LF maximum peak of 260 °C
- AEC-Q101 qualified available
  - Automotive ordering code: base P/NHE3 or P/NHM3
- Material categorization: for definitions of compliance please see [www.vishay.com/doc?99912](http://www.vishay.com/doc?99912)

### PRIMARY CHARACTERISTICS

|                               |                   |
|-------------------------------|-------------------|
| $V_Z$                         | 9.1 V to 68 V     |
| $P_{tot}$                     | 1500 mW           |
| $I_R (V_Z \geq 12 \text{ V})$ | 5.0 $\mu\text{A}$ |
| $T_J \text{ max.}$            | 150 °C            |
| $V_Z$ specification           | Pulse current     |
| Circuit configuration         | Single            |

### TYPICAL APPLICATIONS

For general purpose regulation, industrial, and protection applications.

### MECHANICAL DATA

**Case:** SMB (DO-214AA)

Molding compound meets UL 94 V-0 flammability rating

Base P/N-E3 - RoHS-compliant, commercial grade

Base P/N-M3 - halogen-free, RoHS-compliant, commercial grade

Base P/NHE3\_X - RoHS-compliant and AEC-Q101 qualified  
Base P/NHM3\_X - halogen-free, RoHS-compliant, and AEC-Q101 qualified

("\_X" denotes revision code e.g. A, B, ...)

**Terminals:** matte tin plated leads, solderable per J-STD-002 and JESD 22-B102

E3, M3, HE3, and HM3 suffix meets JESD 201 class 2 whisker test

**Polarity:** Color band denotes cathode end

### MAXIMUM RATINGS ( $T_A = 25 \text{ }^\circ\text{C}$ unless otherwise noted)

| PARAMETER  | SYMBOL         | VALUE       | UNIT |
|--|----------------|-------------|------|
| Operating junction and storage temperature range | $T_J, T_{STG}$ | -55 to +150 | °C   |



| ELECTRICAL CHARACTERISTICS (T <sub>A</sub> = 25 °C unless otherwise noted) |                     |                                   |      |      |                 |                 |                                    |                                    |                                  |      |                           |
|--|---------------------|-----------------------------------|------|------|-----------------|-----------------|------------------------------------|------------------------------------|----------------------------------|------|---------------------------|
| PART NUMBER (1)  | DEVICE MARKING CODE | ZENER VOLTAGE RANGE               |      |      | TEST CURRENT    |                 | MAXIMUM ZENER IMPEDANCE            |                                    | MAXIMUM REVERSE CURRENT          |      | MAXIMUM ZENER CURRENT (1) |
|  |                     | V <sub>Z</sub> AT I <sub>ZT</sub> |      |      | I <sub>ZT</sub> | I <sub>ZK</sub> | Z <sub>ZT</sub> AT I <sub>ZT</sub> | Z <sub>ZK</sub> AT I <sub>ZK</sub> | I <sub>R</sub> AT V <sub>R</sub> |      | I <sub>ZM</sub>           |
|  |                     | V                                 |      |      | mA              |                 | Ω                                  |                                    | μA                               | V    | mA                        |
|  |                     | MIN.                              | NOM. | MAX. |                 |                 | MAX.                               | MAX.                               | MAX.                             |      | MAX.                      |
| SMZJ3788B  | VL                  | 8.65                              | 9.1  | 9.56 | 41.2            | 0.50            | 4.0                                | 1000                               | 50                               | 7.0  | 140                       |
| SMZJ3789B  | WB                  | 9.50                              | 10   | 10.5 | 37.5            | 0.25            | 5.0                                | 1000                               | 50                               | 7.6  | 125                       |
| SMZJ3790B  | WD                  | 10.5                              | 11   | 11.6 | 34.1            | 0.25            | 6.0                                | 650                                | 10                               | 8.4  | 115                       |
| SMZJ3791B  | WF                  | 11.4                              | 12   | 12.6 | 31.2            | 0.25            | 7.0                                | 550                                | 5.0                              | 9.1  | 105                       |
| SMZJ3792B  | WH                  | 12.4                              | 13   | 13.7 | 28.8            | 0.25            | 7.5                                | 550                                | 5.0                              | 9.9  | 98                        |
| SMZJ3793B  | WJ                  | 14.3                              | 15   | 15.8 | 25.0            | 0.25            | 9.0                                | 600                                | 5.0                              | 11.4 | 85                        |
| SMZJ3794B  | WL                  | 15.2                              | 16   | 16.8 | 23.4            | 0.25            | 10.0                               | 600                                | 5.0                              | 12.2 | 80                        |
| SMZJ3795B  | XB                  | 17.1                              | 18   | 18.9 | 20.8            | 0.25            | 12.0                               | 650                                | 5.0                              | 13.7 | 70                        |
| SMZJ3796B  | XD                  | 19.0                              | 20   | 21.0 | 18.7            | 0.25            | 14.0                               | 650                                | 5.0                              | 15.2 | 62                        |
| SMZJ3797B  | XF                  | 20.9                              | 22   | 23.1 | 17.0            | 0.25            | 17.5                               | 650                                | 5.0                              | 16.7 | 56                        |
| SMZJ3798B  | XH                  | 22.8                              | 24   | 25.2 | 15.6            | 0.25            | 19.0                               | 700                                | 5.0                              | 18.2 | 51                        |
| SMZJ3799B  | XJ                  | 25.7                              | 27   | 28.4 | 13.9            | 0.25            | 23.0                               | 700                                | 5.0                              | 20.6 | 46                        |
| SMZJ3800B  | XL                  | 28.5                              | 30   | 31.5 | 12.5            | 0.25            | 26.0                               | 750                                | 5.0                              | 22.8 | 41                        |
| SMZJ3801B  | YB                  | 31.4                              | 33   | 34.7 | 11.4            | 0.25            | 33.0                               | 800                                | 5.0                              | 25.1 | 38                        |
| SMZJ3802B  | YD                  | 34.2                              | 36   | 37.8 | 10.4            | 0.25            | 38.0                               | 850                                | 5.0                              | 27.4 | 35                        |
| SMZJ3803B  | YF                  | 37.1                              | 39   | 41.0 | 9.6             | 0.25            | 45.0                               | 900                                | 5.0                              | 29.7 | 31                        |
| SMZJ3804B  | YH                  | 40.9                              | 43   | 45.2 | 8.7             | 0.25            | 53.0                               | 950                                | 5.0                              | 32.7 | 28                        |
| SMZJ3805B  | YJ                  | 44.7                              | 47   | 49.4 | 8.0             | 0.25            | 67.0                               | 1000                               | 5.0                              | 35.8 | 26                        |
| SMZJ3806B  | YL                  | 48.5                              | 51   | 53.6 | 7.3             | 0.25            | 70.0                               | 1100                               | 5.0                              | 38.8 | 24                        |
| SMZJ3807B  | ZB                  | 53.2                              | 56   | 58.8 | 6.7             | 0.25            | 86.0                               | 1300                               | 5.0                              | 42.6 | 22                        |
| SMZJ3808B  | ZD                  | 58.9                              | 62   | 65.1 | 6.0             | 0.25            | 100.0                              | 1500                               | 5.0                              | 47.1 | 20                        |
| SMZJ3809B  | ZF                  | 64.6                              | 68   | 71.4 | 5.5             | 0.25            | 120.0                              | 1700                               | 5.0                              | 51.7 | 18                        |

**Note**(1) Maximum steady state power dissipation is 1500 mW at T<sub>L</sub> = 75 °C (fig. 1)

| ORDERING INFORMATION (Example) |                 |                        |               |                                    |
|--------------------------------|-----------------|------------------------|---------------|------------------------------------|
| PREFERRED P/N                  | UNIT WEIGHT (g) | PREFERRED PACKAGE CODE | BASE QUANTITY | DELIVERY MODE                      |
| SMZJ3788B-E3/52                | 0.096           | 52                     | 750           | 7" diameter plastic tape and reel  |
| SMZJ3788B-M3/52                |                 |                        |               |                                    |
| SMZJ3788B-E3/5B                | 0.096           | 5B                     | 3200          | 13" diameter plastic tape and reel |
| SMZJ3788B-E3/5B                |                 |                        |               |                                    |
| SMZJ3788BHE3_A/H (1)           | 0.096           | H                      | 750           | 7" diameter plastic tape and reel  |
| SMZJ3788BHM3_A/H (1)           |                 |                        |               |                                    |
| SMZJ3788BHE3_A/I (1)           | 0.096           | I                      | 3200          | 13" diameter plastic tape and reel |
| SMZJ3788BHM3_A/I (1)           |                 |                        |               |                                    |

**Note**

(1) AEC-Q101 qualified

## RATINGS AND CHARACTERISTICS CURVES ( $T_A = 25\text{ }^\circ\text{C}$ unless otherwise noted)

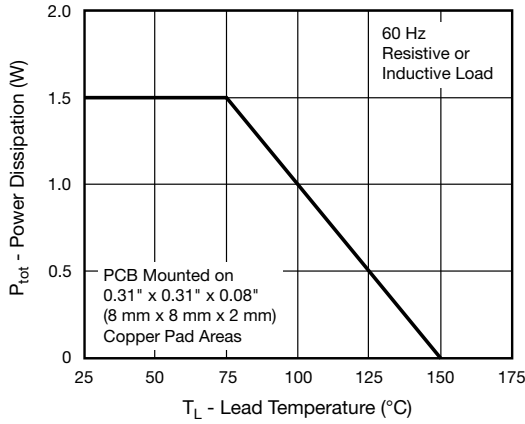


Fig. 1 - Maximum Continuous Power Dissipation

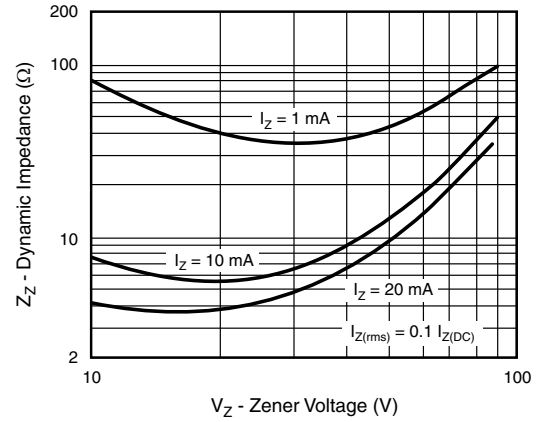


Fig. 3 - Typical Zener Impedance

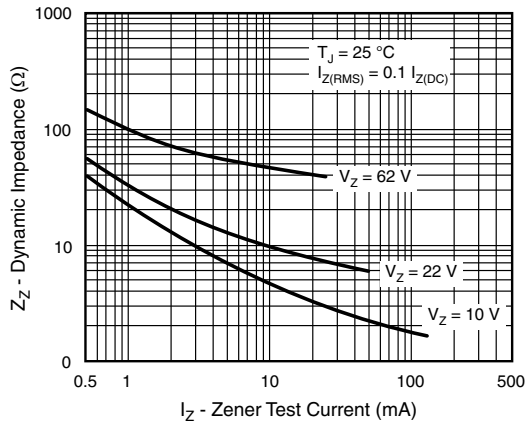


Fig. 2 - Typical Zener Impedance

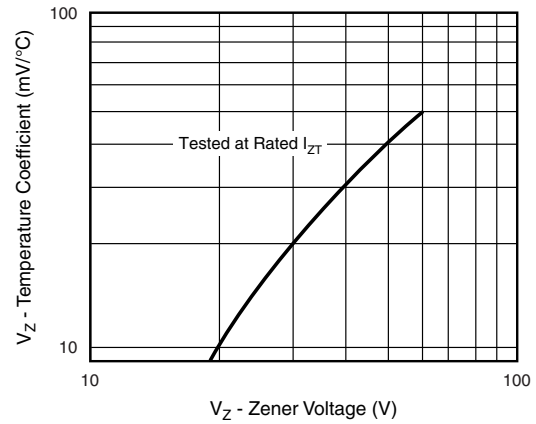
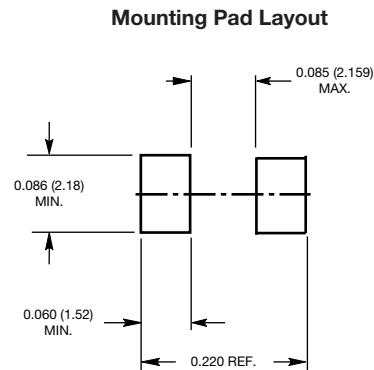
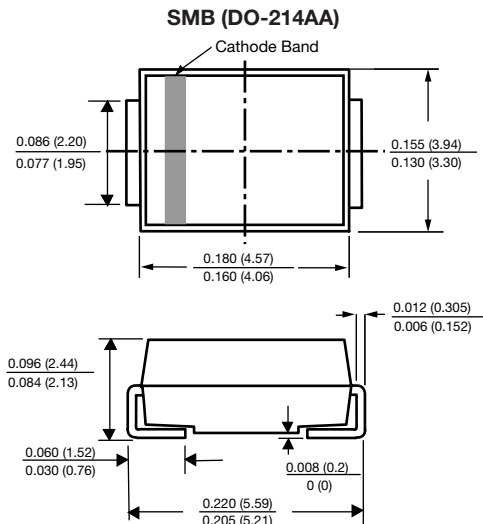


Fig. 4 - Typical Temperature Coefficients

## PACKAGE OUTLINE DIMENSIONS in inches (millimeters)





## Disclaimer

ALL PRODUCT, PRODUCT SPECIFICATIONS AND DATA ARE SUBJECT TO CHANGE WITHOUT NOTICE TO IMPROVE RELIABILITY, FUNCTION OR DESIGN OR OTHERWISE.

Vishay Intertechnology, Inc., its affiliates, agents, and employees, and all persons acting on its or their behalf (collectively, "Vishay"), disclaim any and all liability for any errors, inaccuracies or incompleteness contained in any datasheet or in any other disclosure relating to any product.

Vishay makes no warranty, representation or guarantee regarding the suitability of the products for any particular purpose or the continuing production of any product. To the maximum extent permitted by applicable law, Vishay disclaims (i) any and all liability arising out of the application or use of any product, (ii) any and all liability, including without limitation special, consequential or incidental damages, and (iii) any and all implied warranties, including warranties of fitness for particular purpose, non-infringement and merchantability.

Statements regarding the suitability of products for certain types of applications are based on Vishay's knowledge of typical requirements that are often placed on Vishay products in generic applications. Such statements are not binding statements about the suitability of products for a particular application. It is the customer's responsibility to validate that a particular product with the properties described in the product specification is suitable for use in a particular application. Parameters provided in datasheets and / or specifications may vary in different applications and performance may vary over time. All operating parameters, including typical parameters, must be validated for each customer application by the customer's technical experts. Product specifications do not expand or otherwise modify Vishay's terms and conditions of purchase, including but not limited to the warranty expressed therein.

Except as expressly indicated in writing, Vishay products are not designed for use in medical, life-saving, or life-sustaining applications or for any other application in which the failure of the Vishay product could result in personal injury or death. Customers using or selling Vishay products not expressly indicated for use in such applications do so at their own risk. Please contact authorized Vishay personnel to obtain written terms and conditions regarding products designed for such applications.

No license, express or implied, by estoppel or otherwise, to any intellectual property rights is granted by this document or by any conduct of Vishay. Product names and markings noted herein may be trademarks of their respective owners.

单击下面可查看定价，库存，交付和生命周期等信息

[>>Vishay\(威世\)](#)