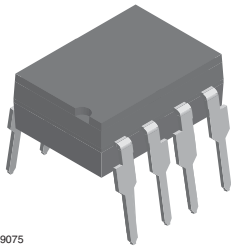
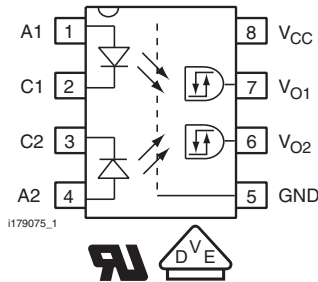


## High Speed Optocoupler, Dual, 5 MBd



I179075



### FEATURES

- Data rate 5 Mbits/s (2.5 Mbit/s over temperature)
- Buffer
- Isolation test voltage, 5300 V<sub>RMS</sub>
- TTL, LSTTL and CMOS compatible
- Internal shield for very high common mode transient immunity
- Wide supply voltage range (4.5 V to 15 V)
- Low input current (1.6 mA to 5 mA)
- Specified from 0 °C to 85 °C
- Compliant to RoHS Directive to 2002/95/EC and in accordance WEEE 2002/96/EC


**RoHS**  
COMPLIANT

### DESCRIPTION

The dual channel 5 Mb/s SFH6731 and SFH6732 high speed optocoupler consists of a GaAlAs infrared emitting diode, optically coupled with an integrated photo detector. The detector incorporates a Schmitt-Trigger stage for improved noise immunity. A Faraday shield provides a common mode transient immunity of 1000 V/μs at V<sub>CM</sub> = 50 V for SFH6731 and 500 V/μs at V<sub>CM</sub> = 300 V for SFH6732.

The SFH6731 and SFH6732 uses an industry standard DIP-8 package. With standard lead bending, creepage distance and clearance of ≥ 7 mm with lead bending options 6, 7 and 9 ≥ 8 mm are achieved.

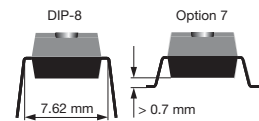
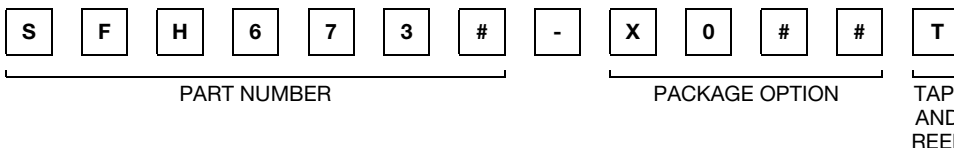
### AGENCY APPROVALS

- UL1577, file no. E52744 system code H, double protection
- DIN EN 60747-5-2 (VDE 0884)/DIN EN 60747-5-5 (pending), available with option 1

### APPLICATIONS

- Industrial control
- Replace pulse transformers
- Routine logic interfacing
- Motion/power control
- High speed line receiver
- Microprocessor system interfaces
- Computer peripheral interfaces

### ORDERING INFORMATION



| AGENCY CERTIFIED/PACKAGE | CMR (kV/μs)   | CMR (kV/μs)   |
|--------------------------|---------------|---------------|
| <b>UL</b>                | <b>1</b>      | <b>5</b>      |
| DIP-8                    | SFH6731       | SFH6732       |
| SMD-8, option 7          | -             | SFH6732-X007T |
| <b>VDE, UL</b>           | <b>1</b>      | <b>5</b>      |
| SMD-8, option 7          | SFH6731-X017T | -             |

### TRUTH TABLE (positive logic)

| PARTS   | IR DIODE | OUTPUT |
|---------|----------|--------|
| SFH6731 | On       | H      |
|         | Off      | L      |
| SFH6732 | On       | H      |
|         | Off      | L      |



| ABSOLUTE MAXIMUM RATINGS (T <sub>amb</sub> = 25 °C, unless otherwise specified) |  |                   |                  |                  |
|---|--|-------------------|------------------|------------------|
| PARAMETER   | TEST CONDITION                                     | SYMBOL            | VALUE            | UNIT             |
| <b>INPUT</b>  |  |                   |                  |                  |
| Reverse voltage   |  | V <sub>R</sub>    | 3                | V                |
| DC Forward current  |  | I <sub>F</sub>    | 10               | mA               |
| Surge forward current   | t <sub>p</sub> ≤ 1 μs, 300 pulses/s                | I <sub>FSM</sub>  | 1                | A                |
| Power dissipation   |  | P <sub>diss</sub> | 20               | mW               |
| <b>OUTPUT</b>   |  |                   |                  |                  |
| Supply voltage  |  | V <sub>CC</sub>   | - 0.5 to + 15    | V                |
| Output voltage  |  | V <sub>O</sub>    | - 0.5 to + 15    | V                |
| Average output current  |  | I <sub>O</sub>    | 25               | mA               |
| Power dissipation   |  | P <sub>diss</sub> | 100              | mW               |
| <b>COUPLER</b>  |  |                   |                  |                  |
| Storage temperature range   |  | T <sub>stg</sub>  | - 55 to + 125    | °C               |
| Ambient temperature range   |  | T <sub>amb</sub>  | - 40 to + 85     | °C               |
| Lead soldering temperature  | t = 10 s   | T <sub>s</sub>    | 260              | °C               |
| Isolation test voltage  | t = 1 s  | V <sub>ISO</sub>  | 5300             | V <sub>RMS</sub> |
| Pollution degree  |  |                   | 2                |                  |
| Creepage distance and clearance   | Standard lead bending                              |                   | 7                | mm               |
|   | Option 6, 7, 9                                     |                   | 8                | mm               |
| Comparative tracking index per DIN IEC 112/VDE 0303, part 1                     |  | CTI               | 175              |                  |
| Isolation resistance  | V <sub>IO</sub> = 500 V, T <sub>amb</sub> = 25 °C  | R <sub>IO</sub>   | 10 <sup>12</sup> | Ω                |
|   | V <sub>IO</sub> = 500 V, T <sub>amb</sub> = 100 °C | R <sub>IO</sub>   | 10 <sup>11</sup> | Ω                |

**Note**

- Stresses in excess of the absolute maximum ratings can cause permanent damage to the device. Functional operation of the device is not implied at these or any other conditions in excess of those given in the operational sections of this document. Exposure to absolute maximum ratings for extended periods of the time can adversely affect reliability.

| ELECTRICAL CHARACTERISTICS (T <sub>amb</sub> = 25 °C, unless otherwise specified) |  |                   |      |      |      |      |
|---|--|-------------------|------|------|------|------|
| PARAMETER   | TEST CONDITION   | SYMBOL            | MIN. | TYP. | MAX. | UNIT |
| <b>INPUT (1)</b>  |  |                   |      |      |      |      |
| Forward voltage   | I <sub>F</sub> = 5 mA  | V <sub>F</sub>    |      | 1.6  | 1.75 | V    |
|   |  | V <sub>F</sub>    |      |      | 1.8  | V    |
| Input current hysteresis  | V <sub>CC</sub> = 5 V, I <sub>HYS</sub> = I <sub>Fon</sub> - I <sub>Foff</sub> |                   |      | 01   |      | mA   |
| Reverse current   | V <sub>R</sub> = 3 V   | I <sub>R</sub>    |      | 0.5  | 10   | μA   |
| Capacitance   | V <sub>R</sub> = 0 V, f = 1MHz   | C <sub>O</sub>    |      | 60   |      | pF   |
| Thermal resistance  |  | R <sub>thja</sub> |      | 700  |      | K/W  |
| <b>OUTPUT (1)</b>   |  |                   |      |      |      |      |
| Logic low output voltage  | I <sub>OL</sub> = 6.4 mA   | V <sub>OL</sub>   |      |      | 0.5  | V    |
| Logic high output voltage   | I <sub>OH</sub> = - 2.6 mA,<br>V <sub>OH</sub> = V <sub>CC</sub> - 1.8 V (2)   | V <sub>OH</sub>   | 2.4  | (2)  |      | V    |
| Output leakage current (V <sub>OUT</sub> > V <sub>CC</sub> )                      | V <sub>O</sub> = 5.5 V, V <sub>CC</sub> = 4.5 V,<br>I <sub>F</sub> = 5 mA      | I <sub>OHH</sub>  |      | 0.5  | 100  | μA   |
|   | V <sub>O</sub> = 15 V, V <sub>CC</sub> = 4.5 V,<br>I <sub>F</sub> = 5 mA       | I <sub>OHH</sub>  |      | 1    | 500  | μA   |
| Logic low supply current  | V <sub>CC</sub> = 5.5 V, I <sub>F</sub> = 0 A                                  | I <sub>CCL</sub>  |      | 3.7  | 6    | mA   |
|   | V <sub>CC</sub> = 15 V, I <sub>F</sub> = 0 A                                   | I <sub>CCL</sub>  |      | 4.1  | 6.5  | mA   |
| Logic high supply current   | V <sub>CC</sub> = 5.5 V, I <sub>F</sub> = 5 mA                                 | I <sub>CCH</sub>  |      | 3.4  | 4    | mA   |
|   | V <sub>CC</sub> = 15 V, I <sub>F</sub> = 5 mA                                  | I <sub>CCH</sub>  |      | 3.7  | 5    | mA   |
| Logic low short circuit output current  | V <sub>O</sub> = V <sub>CC</sub> = 5.5 V, I <sub>F</sub> = 0 A                 | I <sub>OSL</sub>  | 25   |      |      | mA   |
|   | V <sub>O</sub> = V <sub>CC</sub> = 15 V, I <sub>F</sub> = 0 A                  | I <sub>OSL</sub>  | 40   |      |      | mA   |



| ELECTRICAL CHARACTERISTICS ( $T_{amb} = 25\text{ }^{\circ}\text{C}$ , unless otherwise specified) |   |           |      |      |      |      |
|---|---|-----------|------|------|------|------|
| PARAMETER   | TEST CONDITION  | SYMBOL    | MIN. | TYP. | MAX. | UNIT |
| <b>OUTPUT</b>   |   |           |      |      |      |      |
| Logic high short circuit output current   | $V_{CC} = 5.5\text{ V}$ , $V_O = 0\text{ V}$ ,<br>$I_F = 5\text{ mA}$ | $I_{OSH}$ |      |      | - 10 | mA   |
|   | $V_{CC} = 15\text{ V}$ , $V_O = 0\text{ V}$ , $I_F = 5\text{ mA}$     | $I_{OSH}$ |      |      | - 25 | mA   |
| Thermal resistance  |   |           |      | 300  |      | K/W  |
| <b>COUPLER</b>  |   |           |      |      |      |      |
| Capacitance (input to output)   | $f = 1\text{ MHz}$ , pins 1 to 4 and 5 to 8 shorted together          | $C_{IO}$  |      | 0.6  |      | pF   |

**Notes**

- Minimum and maximum values are testing requirements. Typical values are characteristics of the device and are the result of engineering evaluation. Typical values are for information only and are not part of the testing requirements.
- $0\text{ }^{\circ}\text{C} \leq T_{amb} \leq 85\text{ }^{\circ}\text{C}$ ;  $4.5\text{ V} \leq V_{CC} \leq 15\text{ V}$ ;  $1.6\text{ mA} \leq I_{Fon} \leq 5\text{ mA}$ ;  $2 \leq V_{EH} \leq 15\text{ V}$ ;  $0 \leq V_{EL} \leq 0.8\text{ V}$ ;  $0\text{ mA} \leq I_{Foff} \leq 0.1\text{ mA}$ .  
Typical values:  $T_{amb} = 25\text{ }^{\circ}\text{C}$ ;  $V_{CC} = 5\text{ V}$ ;  $I_{Fon} = 3\text{ mA}$  unless otherwise specified.
- Output short circuit time  $\leq 10\text{ ms}$ .

| SWITCHING CHARACTERISTICS                        |                           |           |      |      |      |      |
|--|---------------------------|-----------|------|------|------|------|
| PARAMETER  | TEST CONDITION            | SYMBOL    | MIN. | TYP. | MAX. | UNIT |
| Propagation delay time to logic low output level | without peaking capacitor | $t_{PHL}$ |      | 120  |      | ns   |
|  | with peaking capacitor    | $t_{PHL}$ |      | 115  | 300  | ns   |
|  | without peaking capacitor | $t_{PLH}$ |      | 125  |      | ns   |
|  | with peaking capacitor    | $t_{PLH}$ |      | 90   | 300  | ns   |
| Output rise time                                 | 10 % to 90 %              | $t_r$     |      | 40   |      | ns   |
| Output fall time                                 | 90 % to 10 %              | $t_f$     |      | 10   |      | ns   |

**Note**

- $0\text{ }^{\circ}\text{C} \leq T_{amb} \leq 85\text{ }^{\circ}\text{C}$ ;  $4.5\text{ V} \leq V_{CC} \leq 15\text{ V}$ ;  $1.6\text{ mA} \leq I_{Fon} \leq 5\text{ mA}$ ;  $0\text{ mA} \leq I_{Foff} \leq 0.1\text{ mA}$ . Typical values:  $T_{amb} = 25\text{ }^{\circ}\text{C}$ ;  $V_{CC} = 5\text{ V}$ ;  $I_{Fon} = 3\text{ mA}$  unless otherwise specified.

| RECOMMENDED OPERATING CONDITIONS |                |            |                    |      |      |                    |
|----------------------------------|----------------|------------|--------------------|------|------|--------------------|
| PARAMETER                        | TEST CONDITION | SYMBOL     | MIN.               | TYP. | MAX. | UNIT               |
| Supply voltage                   |                | $V_{CC}$   | 4.5                |      | 15   | V                  |
| Forward input current            |                | $I_{Fon}$  | 1.6 <sup>(1)</sup> |      | 5    | mA                 |
|                                  |                | $I_{Foff}$ |                    |      | 0.1  | mA                 |
| Operating temperature            |                | $T_A$      | 0                  |      | 85   | $^{\circ}\text{C}$ |

**Notes**

- A 0.1  $\mu\text{F}$  bypass capacitor connected between pins 5 and 8 must be used.
- <sup>(1)</sup> We recommend using a 2.2 mA to permit at least 20 % CTR degradation guard band.

| COMMON MODE TRANSIENT IMMUNITY                           |   |         |          |        |      |      |                  |
|--|---|---------|----------|--------|------|------|------------------|
| PARAMETER  | TEST CONDITION                                    | PART    | SYMBOL   | MIN.   | TYP. | MAX. | UNIT             |
| Logic high common mode transient immunity <sup>(1)</sup> | $ V_{CM}  = 50\text{ V}$ , $I_F = 1.6\text{ mA}$  | SFH6731 | $ CM_H $ | 1000   |      |      | V/ $\mu\text{s}$ |
|  | $ V_{CM}  = 300\text{ V}$ , $I_F = 1.6\text{ mA}$ | SFH6732 | $ CM_H $ | 5000   |      |      | V/ $\mu\text{s}$ |
| Logic low common mode transient immunity <sup>(1)</sup>  | $ V_{CM}  = 50\text{ V}$ , $I_F = 0\text{ mA}$    | SFH6731 | $ CM_L $ | 1000   |      |      | V/ $\mu\text{s}$ |
|  | $ V_{CM}  = 1000\text{ V}$ , $I_F = 0\text{ mA}$  | SFH6732 | $ CM_L $ | 10 000 |      |      | V/ $\mu\text{s}$ |

**Notes**

- $T_{amb} = 25\text{ }^{\circ}\text{C}$ ,  $V_{CC} = 5\text{ V}$ <sup>(1)</sup>
- <sup>(1)</sup> CMH is the maximum slew rate of a common mode voltage VCM at which the output voltage remains at logic high level ( $V_O > 2\text{ V}$ ). CML is the maximum slew rate of a common mode voltage VCM at which the output voltage remains at logic low level ( $V_O < 0.8\text{ V}$ ).

| SAFETY AND INSULATION RATINGS                        |                |        |      |           |      |      |
|--|----------------|--------|------|-----------|------|------|
| PARAMETER  | TEST CONDITION | SYMBOL | MIN. | TYP.      | MAX. | UNIT |
| Climatic classification (according to IEC 68 part 1) |                |        |      | 55/100/21 |      |      |
| Comparative tracking index                           |                | CTI    | 175  |           | 399  |      |
| $V_{IOTM}$   |                |        | 8000 |           |      | V    |
| $V_{IORM}$   |                |        | 890  |           |      | V    |
| $P_{SO}$   |                |        |      |           | 500  | mW   |
| $I_{SI}$   |                |        |      |           | 300  | mA   |
| $T_{SI}$   |                |        |      |           | 175  | °C   |
| Creepage distance                                    | Standard DIP-8 |        | 7    |           |      | mm   |
| Clearance distance                                   | Standard DIP-8 |        | 7    |           |      | mm   |
| Creepage distance                                    | 400 mil DIP-8  |        | 8    |           |      | mm   |
| Clearance distance                                   | 400 mil DIP-8  |        | 8    |           |      | mm   |

**Note**

- As per DIN EN 60747-5-2 (VDE 0884), § 7.4.3.8.1, this optocoupler is suitable for “safe electrical insulation” only within the safety ratings. Compliance with the safety ratings shall be ensured by means of protective circuits.

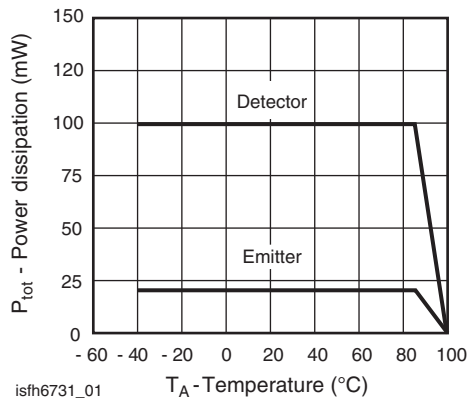
**TYPICAL CHARACTERISTICS** ( $T_{amb} = 25\text{ °C}$ , unless otherwise specified)


Fig. 1 - Permissible Total Power Dissipation vs. Temperature

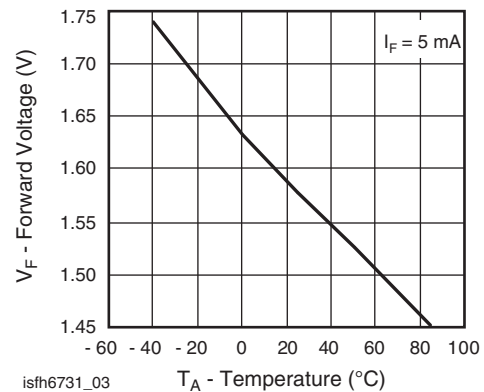


Fig. 3 - Typical Forward Input Voltage vs. Temperature

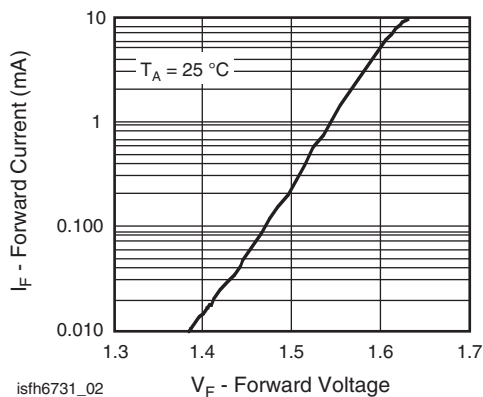


Fig. 2 - Typical Input Diode Forward Current vs. Forward Voltage

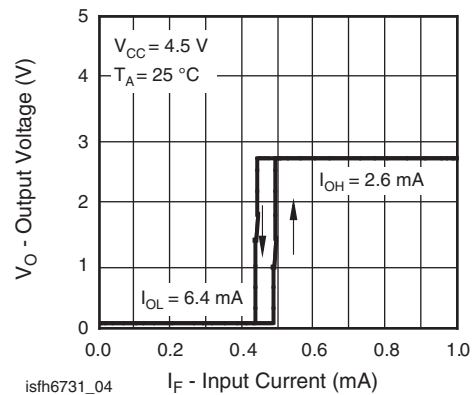


Fig. 4 - Typical Output Voltage vs. Forward Input Current

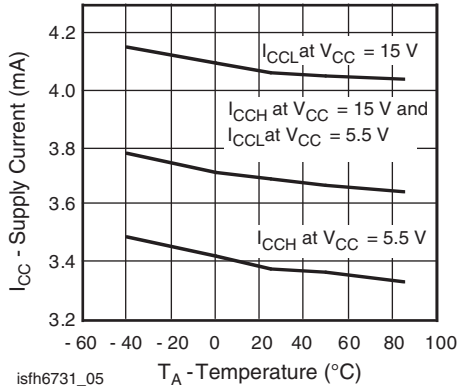


Fig. 5 - Typical Supply Current vs. Temperature

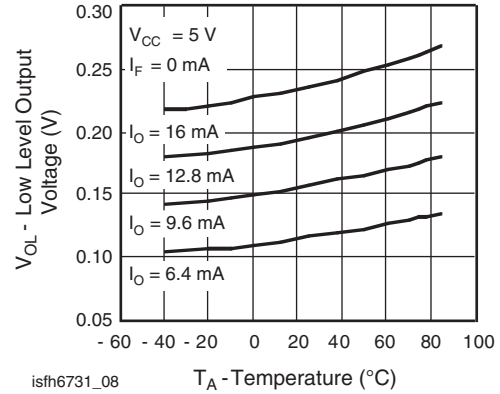


Fig. 8 - Typical Low Level Output Voltage vs. Temperature

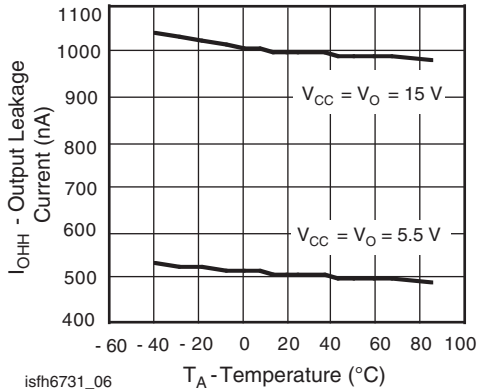


Fig. 6 - Typical Output Leakage Current vs. Temperature

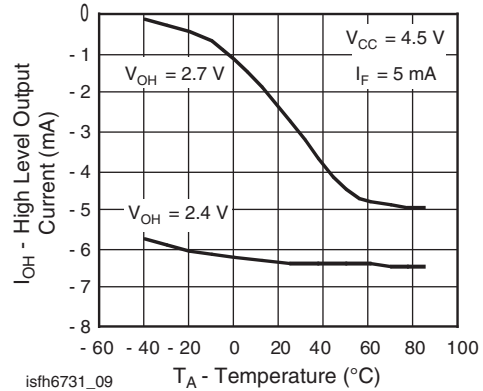


Fig. 9 - Typical High Level Output Current vs. Temperature

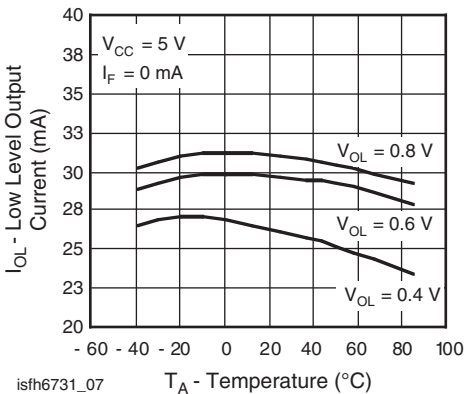


Fig. 7 - Typical Low Level Output Current vs. Temperature

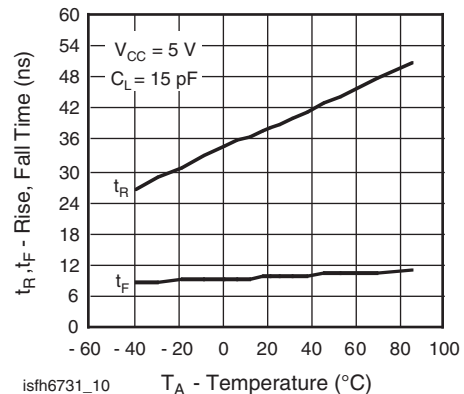


Fig. 10 - Rise and Fall Time vs. Ambient Temperature

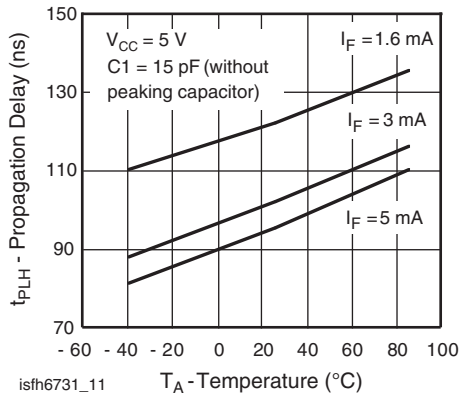


Fig. 11 - Typical Propagation Delays to Logic High vs. Temperature

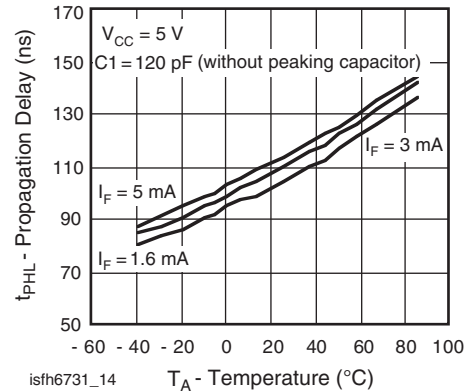


Fig. 14 - Typical Propagation Delays to Logic Low vs. Temperature

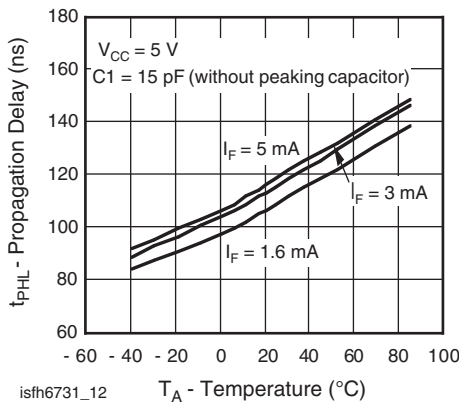


Fig. 12 - Typical Propagation Delays to Logic Low vs. Temperature

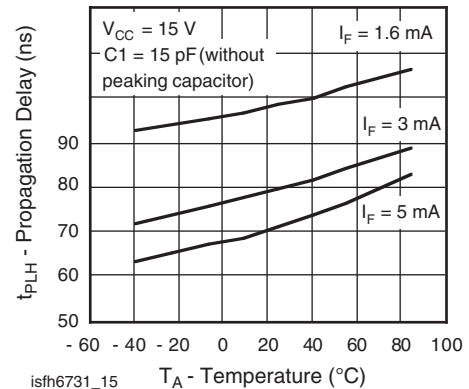


Fig. 15 - Typical Propagation Delays to Logic High vs. Temperature

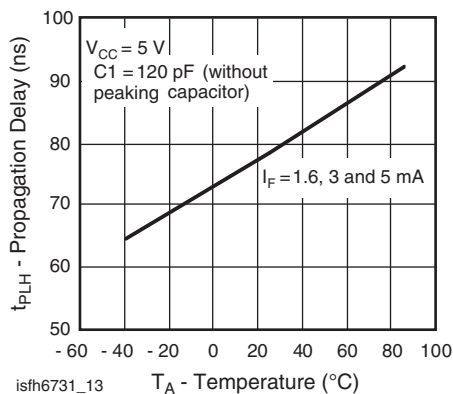


Fig. 13 - Typical Propagation Delays to Logic High vs. Temperature

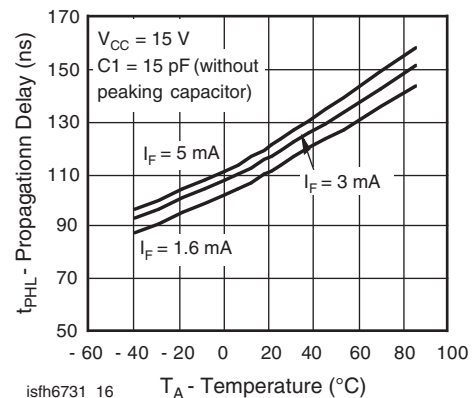


Fig. 16 - Typical Propagation Delays to Logic Low vs. Temperature

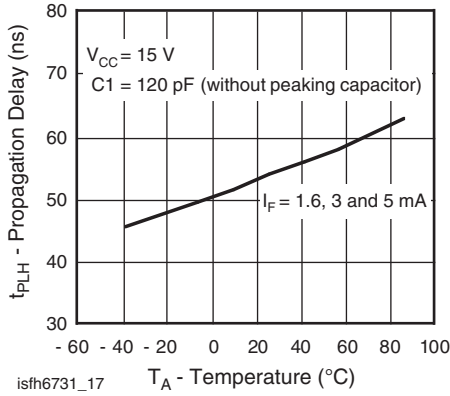


Fig. 17 - Typical Propagation Delays to Logic High vs. Temperature

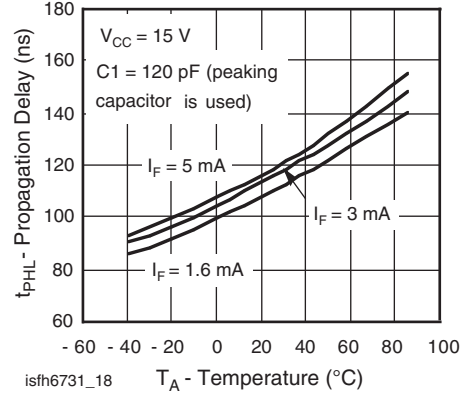


Fig. 18 - Typical Propagation Delays to Logic Low vs. Temperature

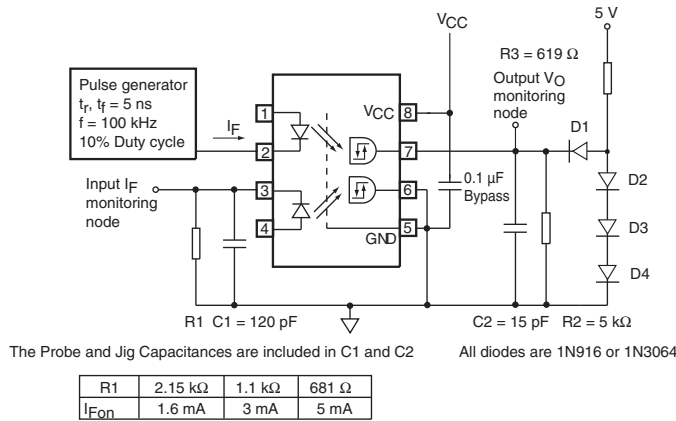


Fig. 19 - Test Circuit for tPLH

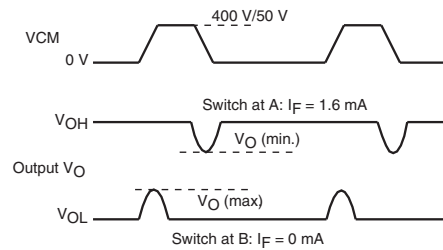
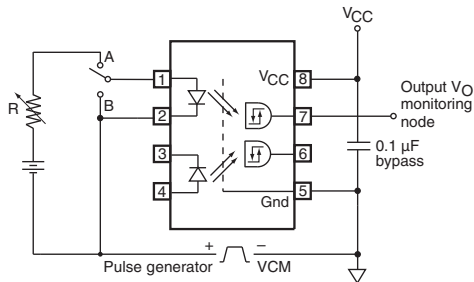
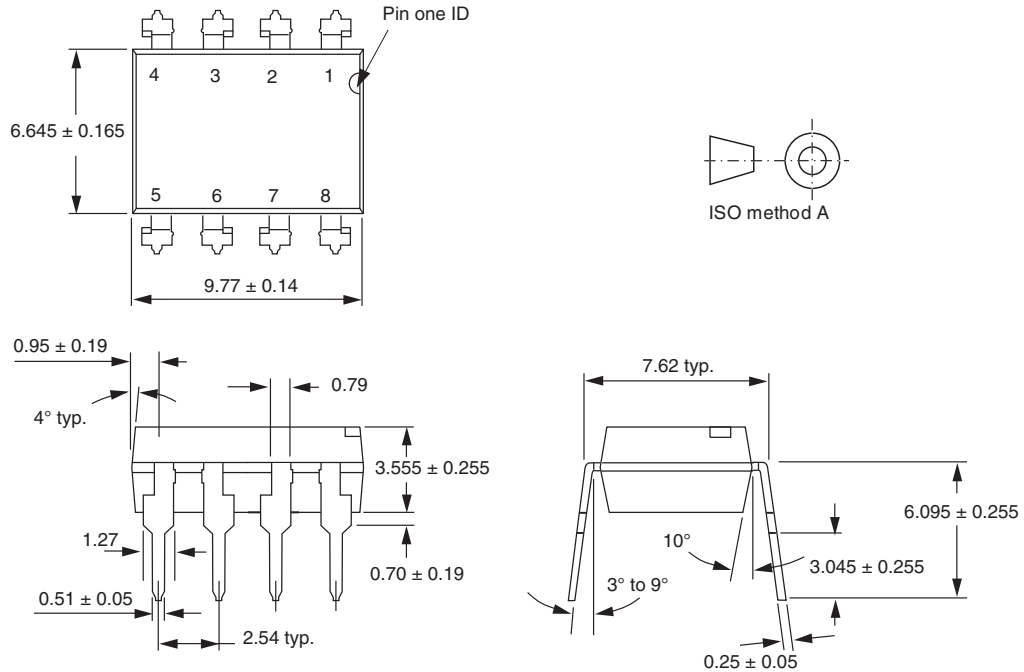


Fig. 20 - Test Circuit for Common Mode Transient Immunity and Typical Waveforms

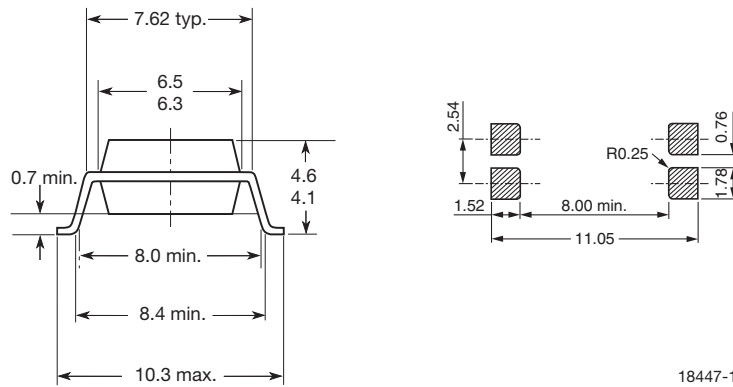


### PACKAGE DIMENSIONS in millimeters



1178006

#### Option 7



18447-1

### PACKAGE MARKING (example)



#### Notes

- The VDE logo is only marked on option 1 parts.
- Tape and reel suffix (T) is not part of the package marking.





## Disclaimer

ALL PRODUCT, PRODUCT SPECIFICATIONS AND DATA ARE SUBJECT TO CHANGE WITHOUT NOTICE TO IMPROVE RELIABILITY, FUNCTION OR DESIGN OR OTHERWISE.

Vishay Intertechnology, Inc., its affiliates, agents, and employees, and all persons acting on its or their behalf (collectively, "Vishay"), disclaim any and all liability for any errors, inaccuracies or incompleteness contained in any datasheet or in any other disclosure relating to any product.

Vishay makes no warranty, representation or guarantee regarding the suitability of the products for any particular purpose or the continuing production of any product. To the maximum extent permitted by applicable law, Vishay disclaims (i) any and all liability arising out of the application or use of any product, (ii) any and all liability, including without limitation special, consequential or incidental damages, and (iii) any and all implied warranties, including warranties of fitness for particular purpose, non-infringement and merchantability.

Statements regarding the suitability of products for certain types of applications are based on Vishay's knowledge of typical requirements that are often placed on Vishay products in generic applications. Such statements are not binding statements about the suitability of products for a particular application. It is the customer's responsibility to validate that a particular product with the properties described in the product specification is suitable for use in a particular application. Parameters provided in datasheets and/or specifications may vary in different applications and performance may vary over time. All operating parameters, including typical parameters, must be validated for each customer application by the customer's technical experts. Product specifications do not expand or otherwise modify Vishay's terms and conditions of purchase, including but not limited to the warranty expressed therein.

Except as expressly indicated in writing, Vishay products are not designed for use in medical, life-saving, or life-sustaining applications or for any other application in which the failure of the Vishay product could result in personal injury or death. Customers using or selling Vishay products not expressly indicated for use in such applications do so at their own risk. Please contact authorized Vishay personnel to obtain written terms and conditions regarding products designed for such applications.

No license, express or implied, by estoppel or otherwise, to any intellectual property rights is granted by this document or by any conduct of Vishay. Product names and markings noted herein may be trademarks of their respective owners.

## Material Category Policy

**Vishay Intertechnology, Inc. hereby certifies that all its products that are identified as RoHS-Compliant fulfill the definitions and restrictions defined under Directive 2011/65/EU of The European Parliament and of the Council of June 8, 2011 on the restriction of the use of certain hazardous substances in electrical and electronic equipment (EEE) - recast, unless otherwise specified as non-compliant.**

**Please note that some Vishay documentation may still make reference to RoHS Directive 2002/95/EC. We confirm that all the products identified as being compliant to Directive 2002/95/EC conform to Directive 2011/65/EU.**

**Vishay Intertechnology, Inc. hereby certifies that all its products that are identified as Halogen-Free follow Halogen-Free requirements as per JEDEC JS709A standards. Please note that some Vishay documentation may still make reference to the IEC 61249-2-21 definition. We confirm that all the products identified as being compliant to IEC 61249-2-21 conform to JEDEC JS709A standards.**



## Disclaimer

ALL PRODUCT, PRODUCT SPECIFICATIONS AND DATA ARE SUBJECT TO CHANGE WITHOUT NOTICE TO IMPROVE RELIABILITY, FUNCTION OR DESIGN OR OTHERWISE.

Vishay Intertechnology, Inc., its affiliates, agents, and employees, and all persons acting on its or their behalf (collectively, "Vishay"), disclaim any and all liability for any errors, inaccuracies or incompleteness contained in any datasheet or in any other disclosure relating to any product.

Vishay makes no warranty, representation or guarantee regarding the suitability of the products for any particular purpose or the continuing production of any product. To the maximum extent permitted by applicable law, Vishay disclaims (i) any and all liability arising out of the application or use of any product, (ii) any and all liability, including without limitation special, consequential or incidental damages, and (iii) any and all implied warranties, including warranties of fitness for particular purpose, non-infringement and merchantability.

Statements regarding the suitability of products for certain types of applications are based on Vishay's knowledge of typical requirements that are often placed on Vishay products in generic applications. Such statements are not binding statements about the suitability of products for a particular application. It is the customer's responsibility to validate that a particular product with the properties described in the product specification is suitable for use in a particular application. Parameters provided in datasheets and/or specifications may vary in different applications and performance may vary over time. All operating parameters, including typical parameters, must be validated for each customer application by the customer's technical experts. Product specifications do not expand or otherwise modify Vishay's terms and conditions of purchase, including but not limited to the warranty expressed therein.

Except as expressly indicated in writing, Vishay products are not designed for use in medical, life-saving, or life-sustaining applications or for any other application in which the failure of the Vishay product could result in personal injury or death. Customers using or selling Vishay products not expressly indicated for use in such applications do so at their own risk. Please contact authorized Vishay personnel to obtain written terms and conditions regarding products designed for such applications.

No license, express or implied, by estoppel or otherwise, to any intellectual property rights is granted by this document or by any conduct of Vishay. Product names and markings noted herein may be trademarks of their respective owners.

## Material Category Policy

**Vishay Intertechnology, Inc. hereby certifies that all its products that are identified as RoHS-Compliant fulfill the definitions and restrictions defined under Directive 2011/65/EU of The European Parliament and of the Council of June 8, 2011 on the restriction of the use of certain hazardous substances in electrical and electronic equipment (EEE) - recast, unless otherwise specified as non-compliant.**

**Please note that some Vishay documentation may still make reference to RoHS Directive 2002/95/EC. We confirm that all the products identified as being compliant to Directive 2002/95/EC conform to Directive 2011/65/EU.**

**Vishay Intertechnology, Inc. hereby certifies that all its products that are identified as Halogen-Free follow Halogen-Free requirements as per JEDEC JS709A standards. Please note that some Vishay documentation may still make reference to the IEC 61249-2-21 definition. We confirm that all the products identified as being compliant to IEC 61249-2-21 conform to JEDEC JS709A standards.**

单击下面可查看定价，库存，交付和生命周期等信息

[>>Vishay\(威世\)](#)