

APPROVAL SHEET

Dipole ANTENNA
700±50 MHz Working Frequency
Halogens Free Product
P/N: RFDPA660900SMTB801

Customer : _____
Customer 's Part No. : _____
Approval No. : _____
Issue Date : _____

*Contents in this sheet are subject to change without prior notice.

Version	Date	Description	Author
V01	2016 Nov.	New Release	SHLEE

ELECTRICAL CHARACTERISTICS

Item	Specification
Working Frequency Range	700±50 MHz (Note-1)
Gain	2 dBi
Return Loss	-10dB(Max)
VSWR	2 max.
Polarization	Linear
Radiation Pattern	Omni-directional
Impedance	50Ω

*Note 1. Central Frequency should be defined after customers' application approval.

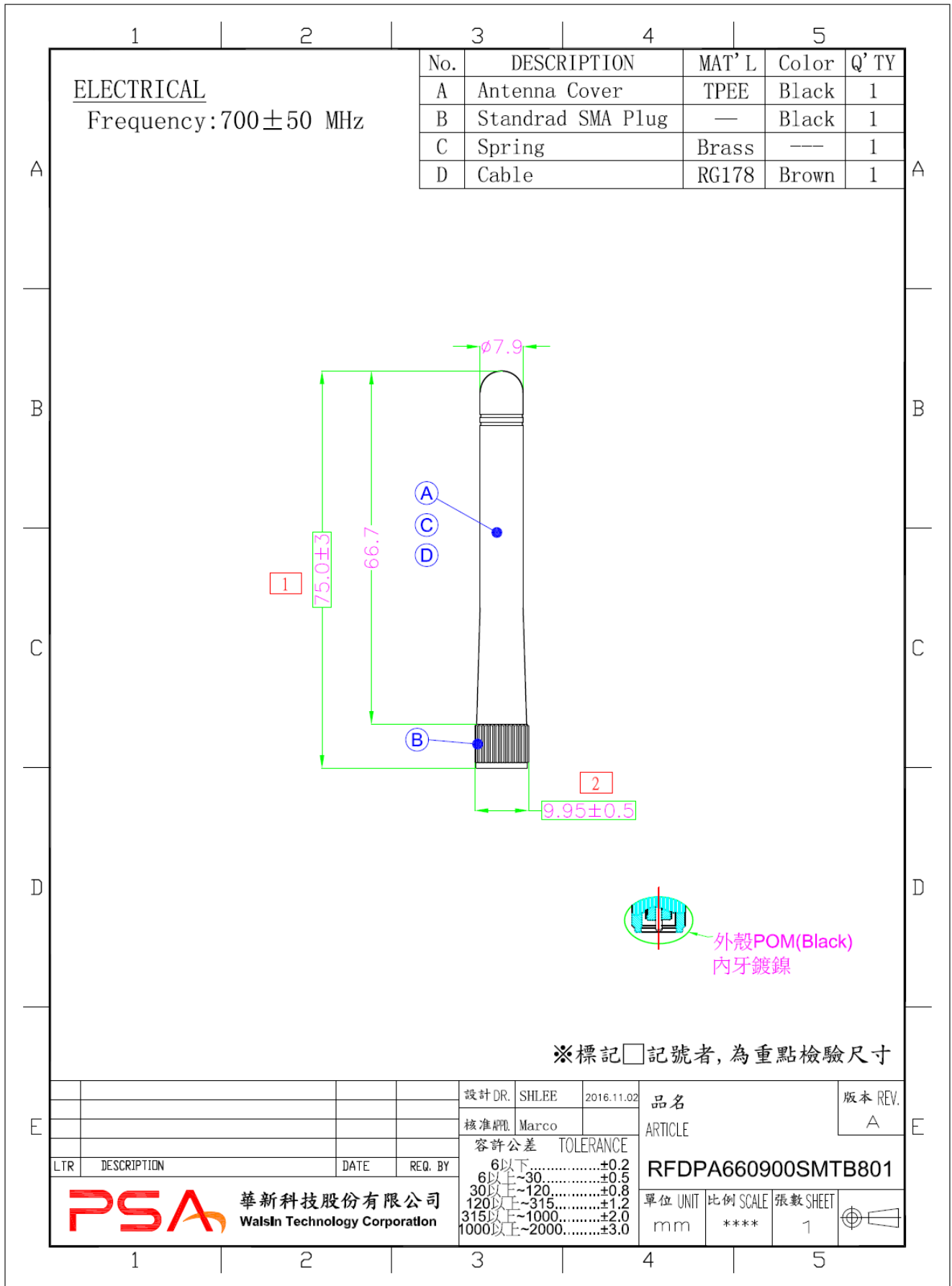
MATERIAL TABLE

Items	Description
Cable	RG178(Brown)
Antenna Cover	TPEE
Connector	SMA Plug
Color	Black
Spring	Brass

ORDERING RULE

RF	DPA	6609	00	S	M	T	B	8	01
Type Code	Product Code	Dipole Dimension (Unit: mm)	Cable Length (unit: cm)	Connector Brand	Type of Connector	Application	Project status	Wire Diameter	Project
Walsin RF Device	DPA: Dipole Antenna	Per 2 digits of length, width e.g.: 8709 Length 86.7mm, Width 9.95mm	2 digits for cable length e.g.: 00 None Cable	A: N C:MCX D:IPEX III E: IPEX IV F: IPEX A13 H: Hirose I: IPEX M: MMCX S: SMA T: TNC U:MURATA N: None	A: Reverse B: Female Reverse Male F: Female M: Male N: None	0: 0GHz 3: 3GHz 5: 5 GHz 6: 6GHz A: 2.4GHz ISM band B: GSM 900/1800 dual band G: GPS band L: 2.4/5.2/5.8 GHz tri-band N: NFC T:LTE band W: WCDMA band	B: MP T:During Test X: Pile Run	0:None 1:∅0.81 3:∅1.13 6:RG316 7:∅1.37 8:RG178	01~99 series number

DIMENSIONS



单击下面可查看定价，库存，交付和生命周期等信息

[>>Walsin Technology\(华新科技\)](#)