

APPROVAL SHEET

Metal ANTENNA

315 MHz Working Frequency

Halogens Free Product

P/N: RFMTA080217NNUB002

Customer : _____
Customer 's Part No. : _____
Approval No. : _____
Issue Date : _____

*Contents in this sheet are subject to change without prior notice.

Version	Date	Description	Author
V01	2016 Jun.	New Release	SHLEE
V02	2016 Aug.	Change the winding direction	SHLEE

ELECTRICAL CHARACTERISTICS

Item	Specification
Working Frequency Range	315 MHz
Return Loss	-10dB(Max)
VSWR	2 max.
Polarization	Linear
Radiation Pattern	-
Impedance	50Ω

MATERIAL TABLE

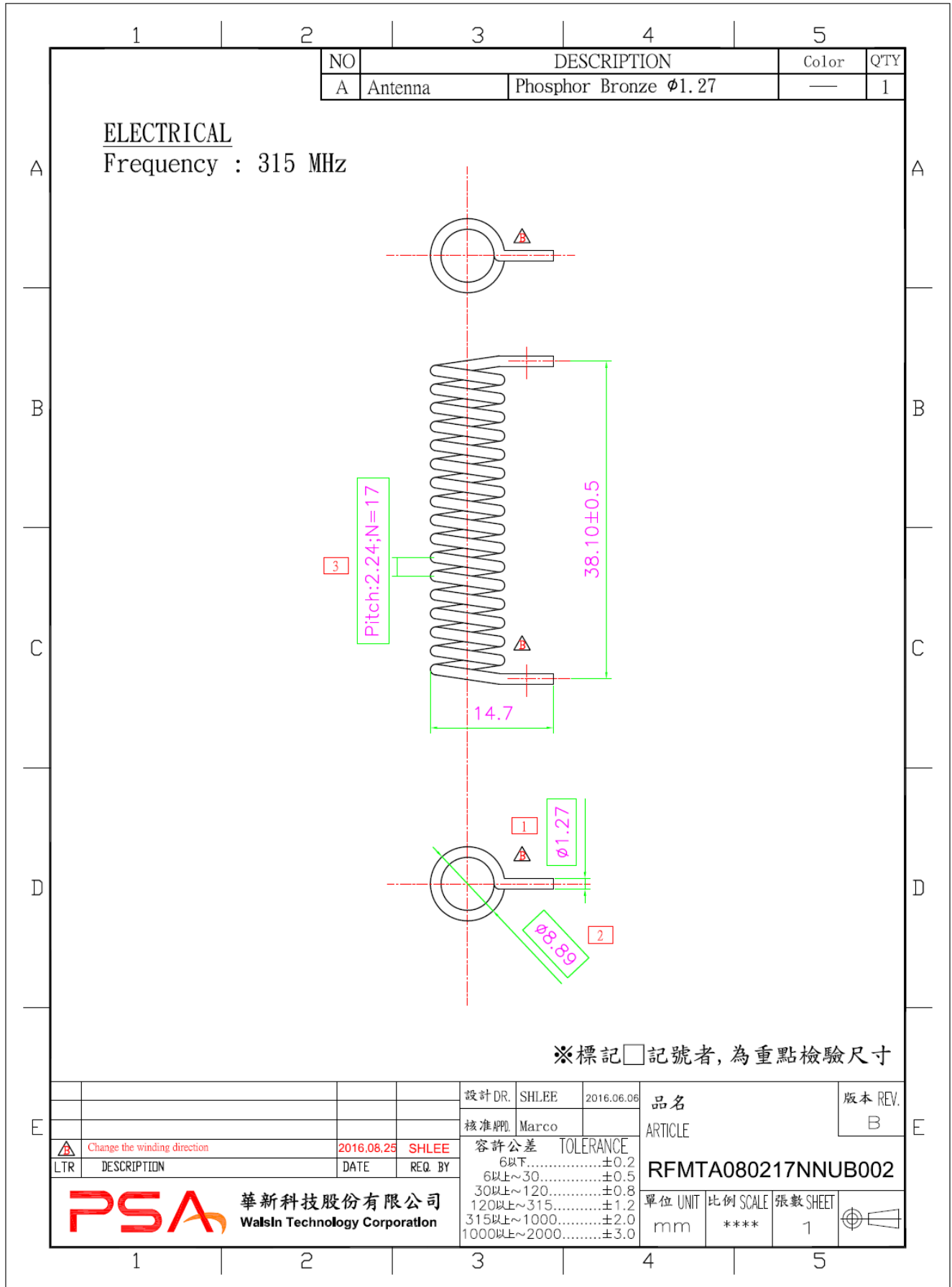
Items	Description
Antenna Material	Phosphor Bronze Ø1.27mm

ORDERING RULE

RF	MTA	0802	17	N	N	U	B	0	02
Type Code	Product Code	Dipole Dimension (Unit: mm)	Turns (unit: cm)	Connector Brand	Type of Connector	Application	Project status	Wire Diameter	Project
Walsin RF Device	MTA: Metal Antenna	Per 2 digits of OD,Pitch e.g.:0401 OD Ø4.8mm, Pitch1.15mm	2 digits for Turns e.g.:19 Turns 19.75	A: N C:MCX D:IPEX III E: IPEX IV F: IPEX A13 H: Hirose I: IPEX M: MMCX S: SMA T: TNC U:MURATA N: None	A: Reverse Female B: Reverse Male F: Female M: Male N: None	0: 0GHz 3: 3GHz 5: 5 GHz 6: 6GHz A: 2.4GHz ISM band B: GSM 900/1800 dual band G: GPS band L: 2.4/5.2/5.8 GHz tri-band N: NFC T:LTE band W: WCDMA band	B: MP T:During Test X: Pile Run	0:None 1:Ø0.81 3:Ø1.13 6:RG316 7:Ø1.37 8:RG178	01~99 series number

Approval sheet

DIMENSIONS



单击下面可查看定价，库存，交付和生命周期等信息

[>>Walsin Technology\(华新科技\)](#)