

APPROVAL SHEET

PCB ANTENNA

863~870 MHz Working Frequency

Halogens Free Product

P/N: RFPCA791010IMRB301

Customer : _____
Customer 's Part No. : _____
Approval No. : _____
Issue Date : _____

*Contents in this sheet are subject to change without prior notice.

Version	Date	Description	Author
V01	2017 Jun.	New Release	SHLEE
V02	2017 Jun.	變更 Layout	SHLEE

Approval sheet

ELECTRICAL CHARACTERISTICS

Item	Specification
Working Frequency Range	863~870 MHz(Note-1)
Return Loss	-10 dB(Max)
Gain(peak)	-
VSWR	< 2.0
Impedance	50 Ohm Nominal
Radiation	Omni-directional
Polarization	Linear Vertical

*Note 1. Central Frequency should be defined after customers' application approval.

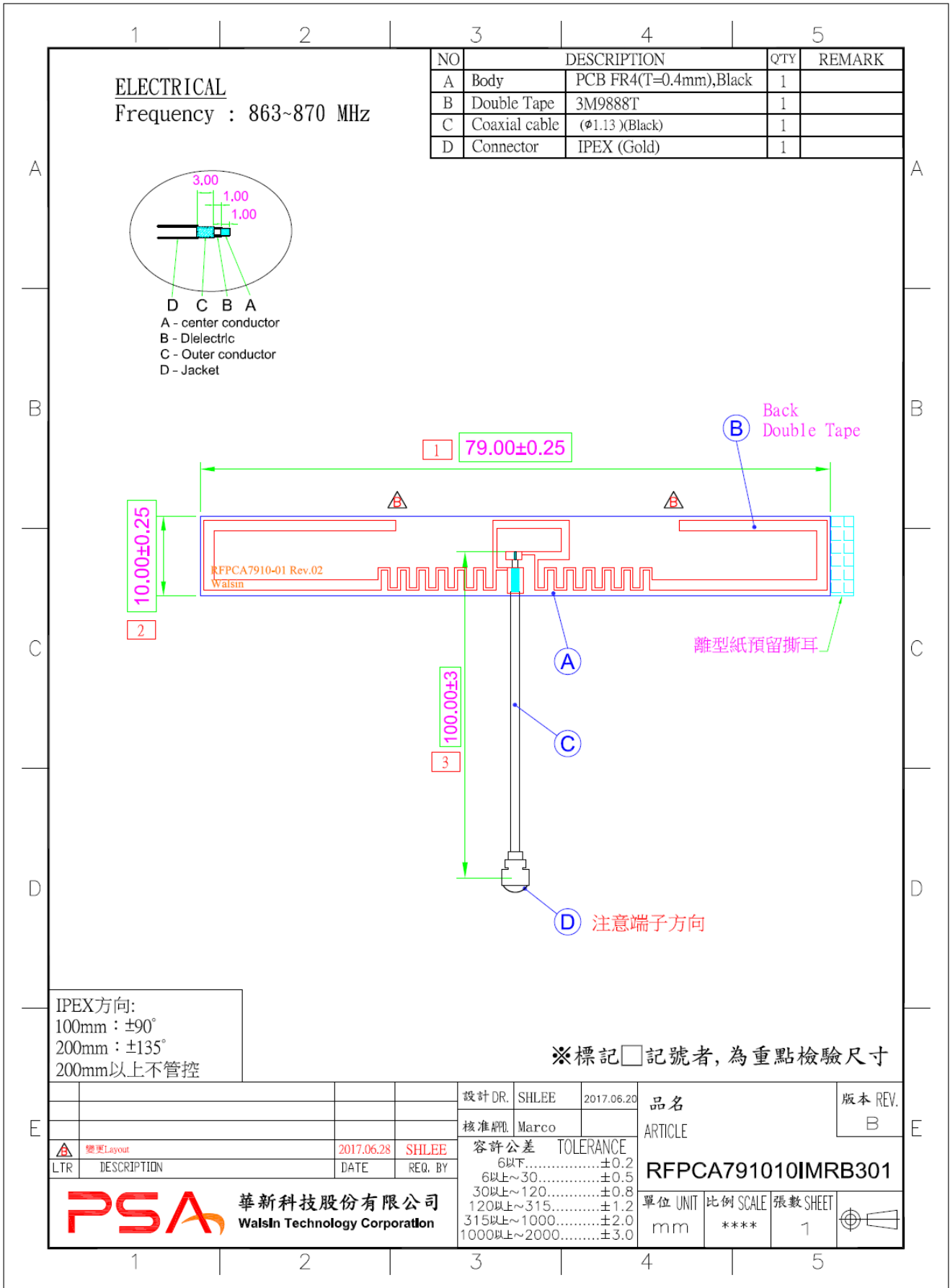
MATERIAL TABLE

Items	Description
Antenna	PCB FR4 T=0.4mm(黑漆板)
Double Tape	3M9888T
Cable	Ø1.13 Cable (Black)
Connector	IPEX (Gold)

ORDERING RULE

RF	PCA	7910	10	I	M	R	B	3	01
Type Code	Product Code	PCB Dimension (Unit: mm)	Cable Length (unit: cm)	Connector Brand	Type of Connector	Application	Project status	Wire Diameter	Project
Walsin RF Device	PCB Antenna	Per 2 digits of length, width e.g.: 4006 Length 40.5mm, Width 6mm	2 digits for cable length e.g.: 22 Length 22cm	A: N C:MCX D:IPEX III E: IPEX IV F: IPEX A13 H: Hirose I: IPEX M: MMCX S: SMA T: TNC U:MURATA N: None	A: Reverse Female B: Reverse Male F: Female M: Male N: None	0: 0GHz 3: 3GHz 5: 5GHz 6: 6GHz A: 2.4GHz ISM band B: GSM 900/1800 dual band G: GPS band L: 2.4/5.2/5.8 GHz tri-band N: NFC R: RFID T: LTE band W: WCDMA band	B: MP T:During Test X: Pile Run	0:None 1:∅ 0.81 2:∅ 1.32 3:∅ 1.13 4:Low Loss ∅ 1.13 5:∅ 0.5 6:RG316 7: ∅ 1.37 8:RG178 9:Low Loss ∅ 1.37	01~99 series number

Dimensions



单击下面可查看定价，库存，交付和生命周期等信息

[>>Walsin Technology\(华新科技\)](#)