

1. 適用範圍 / SCOPE

此份規格書涵蓋 MSE 金屬板電流感測電阻元件相關規格.

This specification covers MSE, which are Metal Strip Current Sensing Resistor.

2. 產品型號/TYPE NUMBER

MSE	2512	M/F	xWx	Rxxx	*
	(1)	(2)	(3)	(4)	(5)

- (1) 產品系列號 / SERIES NUMBER : Ex.MSE2512 = 短電極/ Short electrode ; 兩端子 / two terminal ; 有側導 / side electrode / size “0.25×0.12”
- (2) 產品材質 / Material : M = 錳銅合金 / MnCu alloy ; F = 鐵鉻鋁合金 / FeCrAl alloy
- (3) 產品瓦特數 / Power Rating : Ex. 2W0=2.0Watt ; 3W0=3.0Watt
- (4) 產品阻值 / Nominal Resistance Value : Ex. 1.5mΩ →1M50 ; 3mΩ →R003
- (5) 元件電阻偏差值 / Resistance Tolerance : Ex. F=±1% ; J=±5%

3. 產品尺寸 / PRODUCT DIMENSIONS

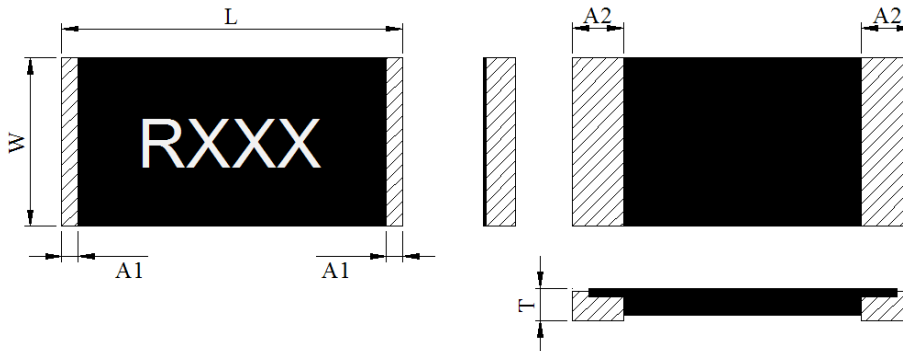


圖 1 / Fig.1

Unit(mm)

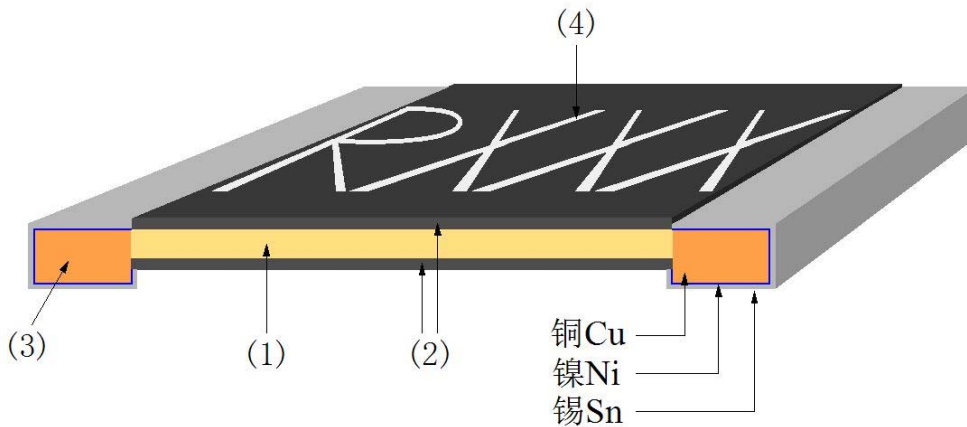
Part Number	W	L	T	A1	A2
MSE1206*1W0-series R001~R002	1.65±0.26	3.20±0.26	0.67±0.26	0~0.2	0.508±0.26
MSE1206*1W0-series R003~R100	1.65±0.26	3.20±0.26	0.49±0.26	0~0.2	0.508±0.26

Part Number	W	L	T	A1	A2
MSE2512*2W0-series 0M50	3.05±0.26	6.35±0.26	0.67±0.26	0.2~1	2.20±0.26
MSE2512*2W0-series R051~R100	3.05±0.26	6.35±0.26	0.56±0.26	0.2~1	1.10±0.26
MSE2512*2W0-series R101~R450	3.05±0.26	6.35±0.26	0.61±0.26	0.2~1	0.85±0.26
MSE2512*3W0-series 0M50	3.05±0.26	6.35±0.26	0.67±0.26	0.2~1	2.20±0.26
MSE2512*3W0-series R004~R050	3.05±0.26	6.35±0.26	0.67±0.26	0.2~1	1.10±0.26
MSE2512*3W0-series R051~R100	3.05±0.26	6.35±0.26	0.74±0.26	0.2~1	1.10±0.26

Part Number	W	L	T	A1	A2
MSE2725*4W0-series 0M25	6.35±0.26	6.80±0.26	0.82±0.26	0.2~1	2.30±0.26
MSE2725*4W0-series 0M50	6.35±0.26	6.80±0.26	0.69±0.26	0.2~1	2.30±0.26
MSE2725*4W0-series R001	6.35±0.26	6.80±0.26	0.69±0.26	0.2~1	1.80±0.26
MSE2725*4W0-series 1M50~R003	6.35±0.26	6.80±0.26	0.61±0.26	0.2~1	1.80±0.26

Part Number	W	L	T	A1	A2
MSE2728*4W0-series R004~R050	6.70±0.26	6.60±0.26	0.72±0.26	0.2~1	1.20±0.26
MSE2728*4W0-series R051~R450	6.70±0.26	6.60±0.26	0.84±0.26	0.2~1	1.20±0.26
MSE2728*4W0-series R451~R600	6.70±0.26	6.60±0.26	0.77±0.26	0.2~1	1.20±0.26

Part Number	W	L	T	A1	A2
MSE4527*5W0-series 0M50	6.60±0.50	11.30±0.50	0.79±0.26	0.2~1	3.00±0.26
MSE4527*5W0-series R001~R005	6.60±0.50	11.30±0.50	0.67±0.26	0.2~1	2.00±0.26
MSE4527*5W0-series R006~R500	6.60±0.50	11.30±0.50	0.57±0.26	0.2~1	2.00±0.26

4. 產品結構及使用材料說明(參考圖 2) / STRUCTURE & MATERIAL (Ref to Fig.2)

圖 2 / Fig.2

- 4.1 電阻本體 / Resistive element(1) : M = 錳銅合金 / MnCu alloy ; F = 鐵鉻鋁合金 / FeCrAl alloy
- 4.2 保護防焊層 / Protective coating(2) : 防火級環氧樹脂,符合 UL- 94-V0 要求(黑色) /
 Flame-retardant epoxy, meets UL- 94-V0 requirements(black)
- 4.3 端電極 / Terminal electrode(3) : 錫、鎳、銅 / Sn、Ni、Cu
- 4.4 文印防焊層 / Marking coating(4) : 防火級環氧樹脂,符合 UL- 94-V0 要求(白色) /
 Flame-retardant epoxy, meets UL- 94-V0 requirements (white)

5. 電氣特性 / ELECTRICAL CHARACTERISTICS

Part Number	Resistance Value (mΩ)	Power Rating (Watt)	Tolerance (%)	TCR (ppm)	Material
MSE1206*1W0-series	1~100	1	±1%(F)	±50	R001: MnCuSn R002~R010: MnCu R011~R100 : FeCrAl
MSE2512*2W0-series	0.5	2	±1%(F)	±50	R0005: MnCuSn
MSE2512*2W0-series	51~450	2	±1%(F)	±50	R051~R450 : FeCrAl
MSE2512*3W0-series	0.5	3	±1%(F)	±50	R0005 : MnCuSn
MSE2512*3W0-series	4~100	3	±1%(F)	±50	R004~R006: MnCu R007~R100 : FeCrAl
MSE2725*4W0-series	0.25~3	4	±1%(F)	±50	R00025: MnCuSn R0005~R0025: MnCu R003 : FeCrAl
MSE2728*4W0-series	4~600	4	±1%(F)	±50	R004~R600 : FeCrAl
MSE4527*5W0-series	0.5~500	5	±1%(F)	±50	R0005: MnCuSn R001~R005: MnCu R006~1R : FeCrAl

6. 產品特性及信賴性測試規範 / PRODUCT CHARACTERISTICS AND RELIABILITY TEST STANDARD

測試方法 Parameter	條件 Conditions	允收標準 Requirements
瞬間過載測試 / Short Time Over Load	MSE1206*1W0 :P= 4Pr ; T=25±2°C , t = 5sec. MSE2512*2W0 :P= 5Pr ; T=25±2°C , t = 5sec. MSE2512*3W0 :P= 3Pr ; T=25±2°C , t = 5sec. MSE2725*4W0 :P= 4Pr ; T=25±2°C , t = 5sec. MSE2728*4W0 :P= 3Pr ; T=25±2°C , t = 5sec. MSE4527*5W0 :P= 3Pr ; T=25±2°C , t = 5sec.	MSE4527:±(2.0%+0.5mΩ) Others:±(1.0%+0.5mΩ) IEC60115-1 4.13
高溫測試 / High Temp. Exposure	T = +170±2°C ; t = 1000h	MSE4527:±(2.0%+0.5mΩ) Others:±(1.0%+0.5mΩ) IEC60115-1 4.25
低溫測試 / Low Temp. Storage	T = -55±2°C ; t = 1000h	MSE4527:±(2.0%+0.5mΩ) Others:±(1.0%+0.5mΩ) IEC60115-1 4.25
濕度負載壽命測試 / Moisture Load Life (60°C、95%RH)	Vtest = Vmax ; T=60±2°C ; RH=95% ; t= 90min ON , 30min OFF , 1000h	±(2.0%+0.5mΩ) IEC60115-1 4.25
冷熱衝擊測試 / Thermal Shock	[-55°C 30min. → R.T. 3min. → +155°C 30min. → R.T. 3min], 100 個連續循環 / 100Cycles	±(1.0%+0.5mΩ) IEC60115-1 4.19
在 70°C 下負載壽命測試 / Load Life at 70°C	Vtest = Vmax ; T=70±2°C ;t= 90min ON , 30min OFF,1000h	±(2.0%+0.5mΩ) IEC60115-1 4.25
可焊性測試 / Solderability	浸入錫爐 / Dip into solder at T = 245±5°C , t = 2±0.5sec.	錫涵蓋面積>95% /The covered area >95% IEC60115-1 4.17
抗焊熱性測試 / Resistance to Solder Heat	經熱風式迴焊爐 / Through Reflow T= 260±5°C , t =10±1sec.	±(1.0%+0.5mΩ) IEC60115-1 4.18
機械衝擊測試 / Mechanical Shock	加速度 a =100G , 振幅時間 t =11ms, 5 個衝擊 a =100G , t =11ms, 5 times shock	±(1.0%+0.5mΩ) IEC60115-1 4.21
基板彎曲測試 / Substrate Bending	兩支撐點間距 / Span between fulcrums : 90mm ; 振幅 / Bend Width : 2mm ; 測試板/Test board : 玻璃纖維板/ Glass-Epoxy Board 厚度 / Thickness = 1.6mm	±(1.0%+0.5mΩ) IEC60115-1 4.33

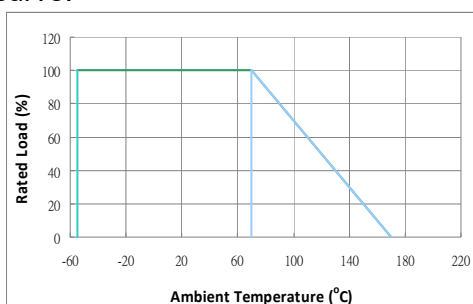
7. 環境特性 / ENVIRONMENTAL CHARACTERISTIC
7-1 操作溫度範圍: -55°C ~ 170°C / Operating Temperature:-55°C ~ 170°C

額定功率溫度衰變曲線 / Typical Thermal Derating Curve

額定功率乃指於 70 °C 以內可連續滿額功率使用的術語。

下圖為當操作溫度高於 70°C 時的可使用功率衰減曲線。

Power rating is based on continuous full load operation at rated ambient temperature of 70 °C. For resistors operated at ambient temp. in excess of 70 °C, the max. load shall be derated in accordance with the following curve.



7-2 存儲條件 / STORAGE CONDITIONS

在溫度+10°C~40°C、相對濕度 $\leq 75\%$ 的密閉條件下可存放2年。 /

Under airtight in temperature+10°C~40°C、relative humidity $\leq 75\%$ can store 2 years.

在溫度+10°C~60°C、相對濕度為95%的非露天下最多可存放30天。 /

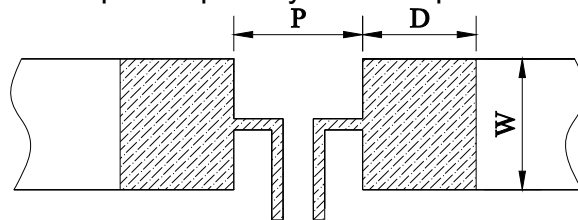
Without dew in temperature+10°C~60°C、relative humidity be 95% maximum value for 30days.

8. 焊錫墊尺寸及焊接條件 / SOLDER PAD SIZE AND WELDING CONDITIONS

8-1 建議如下圖焊接方式焊接，並滿足所要求的尺寸。 / Propose that the following picture installation way is installed, and satisfied the required size.

Part Number	Resistance (mΩ)	P	W	D	Loading
MSE1206*1W0-series	1~100	0.66mm	2.18mm	1.60mm	1W
MSE2512*2W0-series	0.5	1.27mm	3.68mm	3.05mm	2W
MSE2512*2W0-series	51~450	3.50mm	3.68mm	1.90mm	2W
MSE2512*3W0-series	0.5	1.27mm	3.68mm	3.05mm	3W
MSE2512*3W0-series	4~100	3.50mm	3.68mm	1.90mm	3W
MSE2725*4W0-series	0.25~0.5	1.32mm	6.86mm	3.18mm	4W
MSE2725*4W0-series	1~3	3.00mm	6.86mm	2.34mm	4W
MSE2728*4W0-series	4~600	3.51mm	7.82mm	2.75mm	4W
MSE4527*5W0-series	0.5~3	4.50mm	8.74mm	4.50mm	5W
MSE4527*5W0-series	3.5~100	6.43mm	8.74mm	3.40mm	5W
MSE4527*5W0-series	101~500	7.63mm	8.74mm	2.93mm	5W

loading : 適用於本司建議焊墊設計並使用於限定穩定電流下 /
 suit for specific pad layout and specific steady current


8-2 建議客戶焊接參數 / Recommended Customer Soldering Parameters
8-2-1 波峰焊溫度曲線 / Wave solder temperature condition (圖 3 / Fig.3)

預熱段 / Preheating : 100°C~130°C, max.100 sec.

焊錫段 / Soldering: 250°C~265°C max. 10 sec.

允許最高溫度 / Maximum temperature : 260±5°C, max. 10sec.

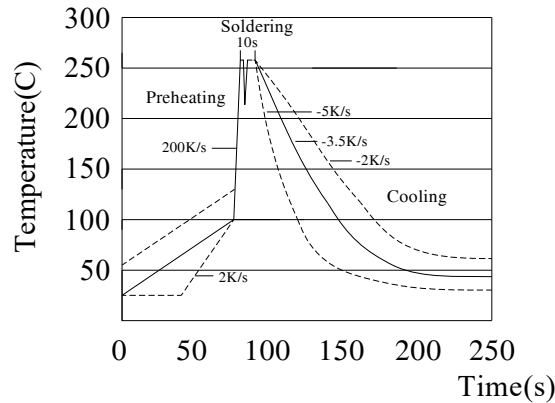


圖 3 / Fig.3

8-2-2 回流焊溫度曲線 / Solder reflow Temperature condition (圖 4 / Fig.4)

預熱段 / Preheating : $145 \pm 15^{\circ}\text{C}$, max.120 sec.

焊錫段 / Soldering : min. 220°C , max. 60 sec.

允許最高溫度 / Maximum temperature : $260 \pm 5^{\circ}\text{C}$, max. 10sec.

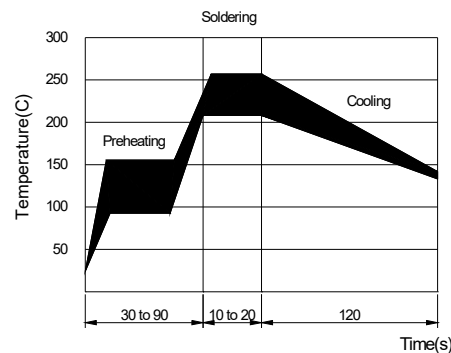


圖 4 / Fig.4

8-2-3 允許烙鐵焊接條件(熱風設備) / Rework temperature (hot air equipment) : 350°C , 3~5seconds

8-2-4 焊接方法建議 / Recommended reflow methods

焊接熱源方式可用紅外線, 熱蒸氣, 熱風. / IR, vapor phase oven, hot air oven

如果焊錫溫度超過允許最高溫度, 則產品本身會有功能損壞的疑慮. / If reflow temperatures exceed the recommended profile, devices may not meet the performance requirements.

9. 批量生產後出貨測試項目 / Lot ACCEPTANCE TEST REQUIREMENTS

每一批生產均須作入庫檢驗, 每一批生產單量不可超過500Kpcs. /

Qualification shall consist of passing a program of following tests. Parts shall be pulled from each lot and maximum lot quantity shall be within 500Kpcs.

9-1 外觀 / Visual

方法 / Procedure : 利用放大鏡進行檢查 / Visual

標準 / Acceptance Criteria : 不能有髒污、不潔、文印錯誤、破損等 / No parts are outstandingly stained

9-2 尺寸 / Dimensions

方法 / Procedure : 使用合適且經校正的尺規 / As appropriate, calipers, micrometers, optical comparator, or approved gages

標準 / Acceptance Criteria : 尺寸均在規定標準範圍內 / No parts outside specific dimensions

9-3 單體元件電阻(Ro) / Resistance (Ro)

方法 / Procedure : 在 25°C 下利用四線量測技術量測之 / Resistance shall be measured with 25 °C in the 4-wire resistance test

標準 / Acceptance Criteria : 電阻值均在規定標準範圍內 / The resistance of the test device shall be within the limits specified

9-4 電阻溫度係數 / TCR

方法 / Procedure : 利用四線法量測出元件分別在 25°C 及 125°C 下的電阻值, 並將其帶入下面公式中即可得出 TCR 值 / Getting the sampling device resistance values measured in 25°C and 125°C and put them in to the following equation to calculate the TCR

標準 / Acceptance Criteria : 溫度係數值均在規定標準範圍內 / All parts must within the specific $TCR = (R_b - R_a) / R_a \times 1 / (T_b - T_a) \times 10^6$

9-5 絕緣電阻 / Insulation resistance (Ri)

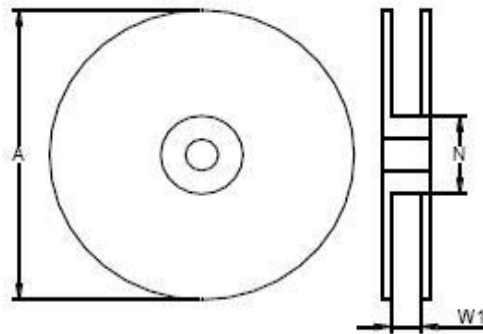
方法 / Procedure : 利用絕緣測試儀量測 / Resistance between protective layer and resistive shall be measured by high ohm meter

標準 / Acceptance Criteria : 防焊層與電阻本體絕緣電阻至少高於 100M Ω / The resistance of the test device shall over 100M Ω

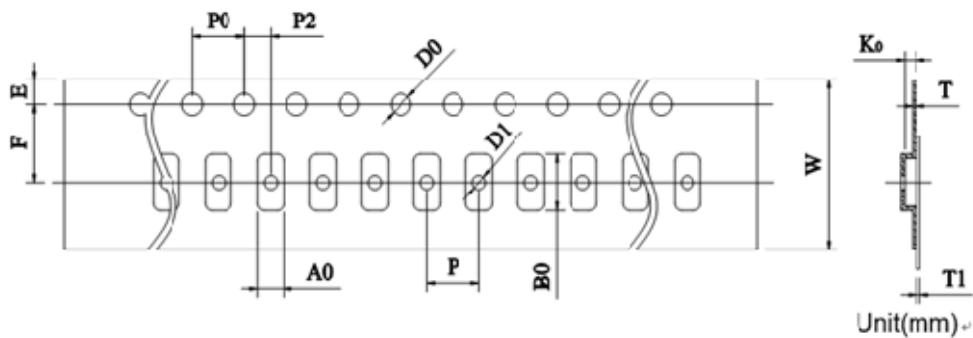
10. 包裝訊息 / PACKAGING INFORMATION
10-1 包裝數量、重量 / QUANTITY & WEIGHT

型號 / Type Number	數量 / Quantity (pcs)	重量 / Weight (g)
MSE1206*1W0-series	5000	126±40
MSE2512*2W0-series	4000	334±50
MSE2512*3W0-series	4000	334±50
MSE2725*4W0-series	2000	357±60
MSE2728*4W0-series	2000	362±60
MSE4527*5W0-series	1000	364±60

10-2 捲輪規格 / Reel & Tape specifications



型號 / Type Number	A±5 (mm)	N±2 (mm)	W1±2 (mm)
MSE1206*1W0-series	178	60	12.0
MSE2512*2W0-series	178	60	16.2
MSE2512*3W0-series	178	60	16.2
MSE2725*4W0-series	178	60	16.2
MSE2728*4W0-series	178	60	16.2
MSE4527*5W0-series	178	60	24.4



MSE1206*1W0-series							
W	8.00 ± 0.30	P0	4.00 ± 0.10	P	4.00 ± 0.10	P2	2.00 ± 0.10
A0	2.03 ± 0.20	B0	3.55 ± 0.20	D0	1.50 ± 0.10	F	3.50 ± 0.10
E	1.75 ± 0.10	T	0.20 ± 0.10	T1	Max. 0.1	K0	0.70 ± 0.20

MSE2512*2W0/3W0-series							
W	12.00 ± 0.30	P0	4.00 ± 0.10	P	4.00 ± 0.10	P2	2.00 ± 0.10
A0	3.50 ± 0.20	B0	6.75 ± 0.20	D0	1.50 ± 0.10	F	5.50 ± 0.10
E	1.75 ± 0.10	T	0.20 ± 0.10	T1	Max. 0.1	K0	0.90 ± 0.20

MSE2725*4W0-series							
W	12.00 ± 0.30	P0	4.00 ± 0.10	P	8.00 ± 0.10	P2	2.00 ± 0.10
A0	6.81 ± 0.20	B0	7.16 ± 0.20	D0	1.50 ± 0.10	F	5.50 ± 0.10
E	1.75 ± 0.10	T	0.25 ± 0.10	T1	Max. 0.1	K0	1.05 ± 0.20

MSE2728*4W0-series							
W	12.00 ± 0.30	P0	4.00 ± 0.10	P	8.00 ± 0.10	P2	2.00 ± 0.10
A0	7.10 ± 0.20	B0	7.05 ± 0.20	D0	1.50 ± 0.10	F	5.50 ± 0.10
E	1.75 ± 0.10	T	0.20 ± 0.10	T1	Max. 0.1	K0	0.95 ± 0.20

MSE4527*5W0-series							
W	24.00 ± 0.30	P0	4.00 ± 0.10	P	12.00 ± 0.10	P2	2.00 ± 0.10
A0	7.38 ± 0.20	B0	12.0 ± 0.20	D0	1.50 ± 0.10	F	11.50 ± 0.10
E	1.75 ± 0.10	T	0.30 ± 0.20	T1	Max. 0.1	K0	1.05 ± 0.20

11. 其他 / OTHERS

- 11-1 如果在使用中有超出本規格書的要求，必須經由雙方協商確認。 / In the event that an impropriety is found beyond this specification ,it shall be fixed by mutual agreement between the parties.
- 11-2 如果本規格書有不適當的情況，必須通過雙方協商並由本公司修改。 / In the event that an impropriety is found in this specification , Juneway Electronic Technology Co., Ltd. shall amend it by mutual agreement between the parties.

单击下面可查看定价，库存，交付和生命周期等信息

[>>Walter\(华德\)](#)