

I-T Characteristics / 時間-電流特性

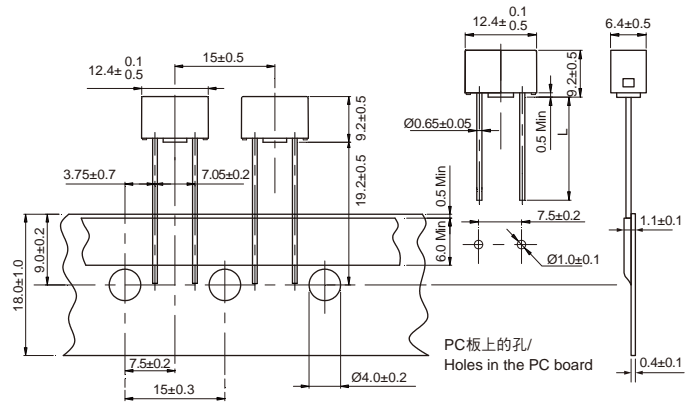
Ampere Rating 額定電流	% of Ampere Rating 額定電流%	Opening Time 熔斷時間
800mA-6.3A	125%	1 Hr Min. / 最短1小時
	200%	2 Min Max. / 最長2分鐘
	1000%	100ms Min. / 最短100毫秒 1s Max. / 最長1秒



Product Features / 產品特性

Materials 材質	Body / 本體: Thermoplastic / 耐熱性塑料 UL94 V-0 Termination / 端子: Tin plated copper / 鍍錫銅線
Operating Temperature 操作溫度	-55°C to +125°C (Consider de-rating / 需考慮溫度折減)
Solderability 可焊性	260°C, ≤ 3s. (Wave / 波峰焊) 350±10°C, ≤ 1s. (Soldering iron / 烙鐵焊)
Resistance to Soldering Heat 耐焊接熱	260°C, 10s. (Wave / 波峰焊) 350°C, 3s. (Soldering iron / 烙鐵焊)
Recommended Soldering Parameters 建議錫焊參數	Wave soldering parameter / 波峰焊 Soldering pot temperature / 錫爐溫度: 260°C Max Solder dwell time / 焊接時間: 2~5s
	Hand welding parameter / 手工焊 Soldering iron temperature / 烙鐵溫度: 350±5°C Solder dwell time / 焊接時間: 1~2s Max.
Storage Conditions 儲存條件	Can be stored for 3 years under tight seal condition at temperature of +10°C-60°C, relative humidity ≤ 75%. 在溫度+10°C-60°C, 相對濕度 ≤ 75% 的密閉條件下可存放 3 年。 At most can be kept 30 days at temperature +10°C-60°C, relative humidity ≤ 95% under covered conditions. 在溫度+10°C-60°C, 相對濕度為 95% 的非露天最多可存放 30 天。

Dimensions / 尺寸圖 (Unit / 單位:mm)



Long Leads / 長引線: L = 19.2±0.5mm
Short Leads / 短引線: L = 4.5±0.5mm

Electrical Characteristics / 電氣特性

Rated Current 額定電流	Rated Voltage 額定電壓	Breaking Capacity 分斷能力	Safety Approvals 安全認證		
			UL [®] US	TÜV	CQC
800mA	250V / 300V	150A@250V AC 100A@300V AC	●	●	●
1A	250V / 300V		●	●	●
1.25A	250V / 300V		●	●	●
1.6A	250V / 300V		●	●	●
2A	250V / 300V		●	●	●
2.5A	250V / 300V		●	●	●
3.15A	250V / 300V		●	●	●
4A	250V / 300V		●	●	●
5A	250V / 300V		●	●	●
6.3A	250V / 300V	●	●	●	

Remark: For CQC, 150A at 250V AC

单击下面可查看定价，库存，交付和生命周期等信息

[>>Walter\(华德\)](#)