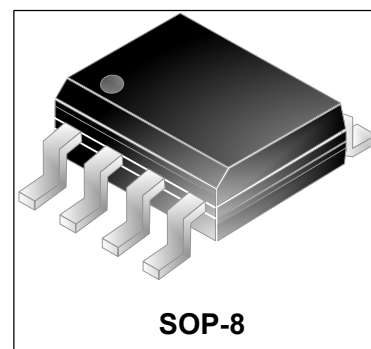


Thyristor Surge Protector

Features

- Integrated fast switching diodes for positive voltage surges.
- Single port protection in one package.
- Low voltage overshoot.
- Low on-state voltage.
- Pin-to-Pin SOP-8 compatible footprint

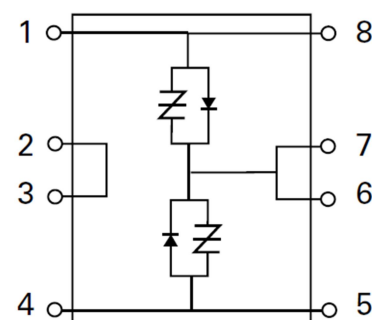


Description

The SOP-8 packaged Fixed Voltage Enhanced Single Port Series are Thyristor components designed to protect Sensitive SLICs (Subscriber Line Interface Circuit) from damaging overvoltage transients.

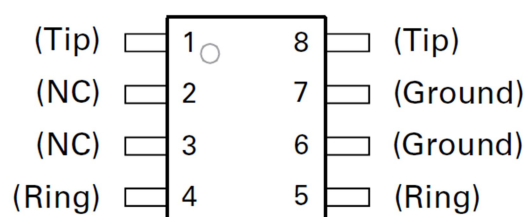
The series provides single port protection using a fixed voltage switching device for negative surges. The Positive surges are routed though enhanced switching diodes to a ground reference. The series is also pin-to-pin compatible to industry standard programmable SOP-8 SLIC protectors.

Schematic Symbol



Pinout

Pin #	Description
1,4,5,8	Tip or Ring
6,7	Ground



Complies with The Following Standards

YD/T 950
ITU-T K.20, K21
GR-1089-CORE

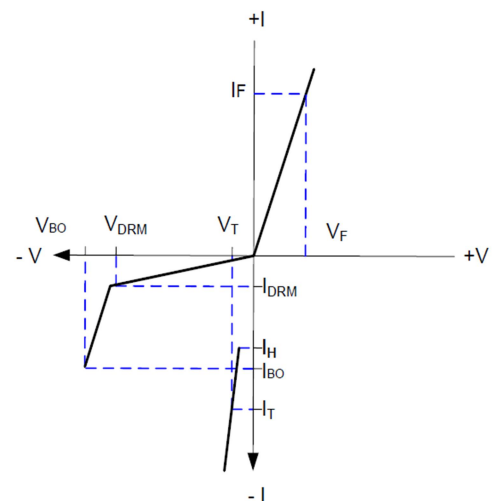
Voltage waveform (μs)	Current waveform (μs)	Required peak current (A)
2/10 μs	2/10 μs	120
1.2/50 μs	8/20 μs	100
10/700 μs	5/320 μs	50
10/1000 μs	10/1000 μs	30

Absolute Maximum Ratings

Symbol	Parameter	Value	Unit
I _{pp}	Non-repetitive peak on-state pulse current		
	10/1000 μs	30	A
	5/320 μs	50	
	8/20 μs	100	
2/10 μs	120		
V _{DRM}	Maximum voltage LINE/GROUND	120	V
T _{STG} T _J	Storage temperature range Junction temperature	-55~150 -40~125	°C
R _{θJA}	Junction to ambient	120	°C/W

Electrical Characteristics (T_A=25°C)

Symbol	Parameter
V _{DRM}	Peak Off-state Voltage
I _{DRM}	Off-state current
I _H	Holding current
V _{BO}	Breakdown voltage
I _{BO}	Breakdown current
V _F	Forward voltage
I _F	Forward current
V _T	On-state voltage
I _T	On-state current
C _o	Off-state capacitance



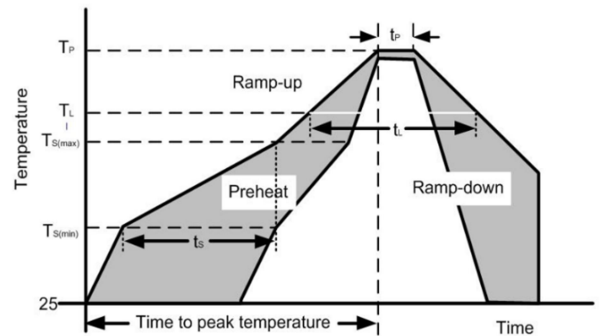
Electrical Characteristics (T_A=25°C)

Part Number	I _{DRM} @ V _{DRM}	V _{DRM} @ I _{DRM} =5μA	V _{BO} @ 100V/μs	I _{BO}	I _T @V _T	V _T @I _T =1 Amps	V _F	I _H	Co* Tip / Ring-Ground	Co* Tip-Rin g
	μA max	Vmin	Vmax	mA max	Amax	Vmax	Vmax	mA min	pF max	pF max
WEOS4-50/120F	5	120	160	800	1	5	5	100	70	35

*Off-state capacitance is measured at 1 MHz with a 2 V bias.

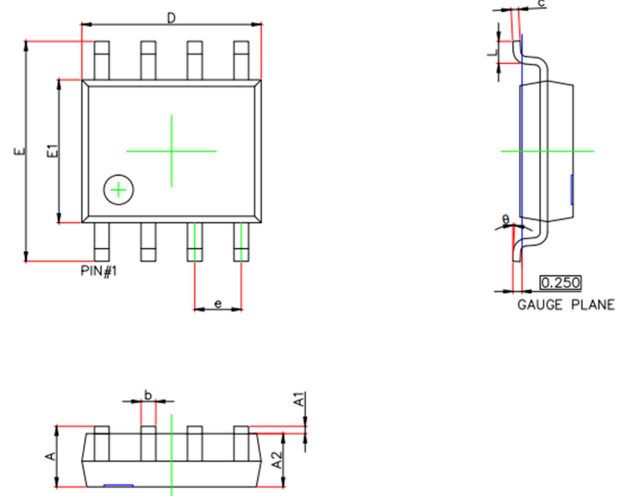
Soldering Parameters

Reflow Condition		
Pre Heat	Temperature Min (T _{s(min)})	150°C
	Temperature Max (T _{s(max)})	200°C
	Time (min to max) (t _s)	60-190 s
Average ramp up rate (Liquidus Temp) (T _L) to peak		3°C/s max
Ts(max) to TL - Ramp-up Rate		3°C/s max
Reflow	Temperature (T _L) (Liquidus)	217°C
	Temperature (t _L)	60-150 s
Peak Temperature (T _P)		260 ^{+0/-5} °C
Time within actual peak Temperature (t _p)		20-40 s
Ramp-down Rate		5°C/s max
Time 25°C to peak Temperature (T _P)		8 minutes Max.
Do not exceed		260°C



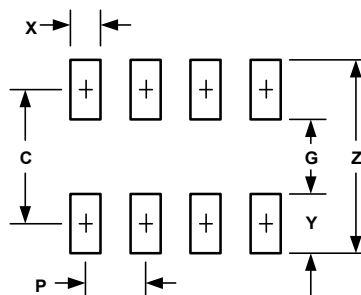
Product Dimensions

Ref.(mm)	Min.	Typ.	Max.
A	1.35		1.75
A1	0.10		0.25
A2	1.35		1.65
b	0.33		0.51
c	0.17		0.25
D	4.80		5.00
E	5.80		6.20
e		1.27	
E1	3.80		4.00
L	0.40		1.27
θ	0°		8°

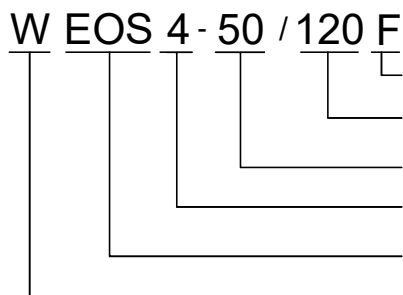


Solder pad layout

DIMENSIONS		
DIM	INCHES	MILLIMETERS
C	0.205	5.21
G	0.118	3.00
P	0.050	1.27
X	0.024	0.61
Y	0.087	2.21
Z	0.291	7.39

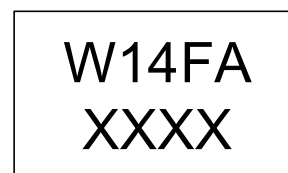


Part Numbering System and Marking



Package : SOP-8
 $V_{DRM}=120V$
 $I_{pp}=50A@5/320\mu s$
 Series No.
 Electrical OverStress
 Wayon

MARKING:



Package Information

Package Type	Description	Quantity (pcs)
SOP8	Tape & Reel	4000

Contact Information

No.1001, Shiwan(7) Road, Pudong District, Shanghai, P.R.China.201207
 Tel: 021-68969993 Fax: 86-21-50757680 Email: market@way-on.com
 WAYON website: <http://www.way-on.com>

For additional information, please contact your local Sales Representative.

WAYON® is registered trademarks of Wayon Corporation.

Specifications are subject to change without notice.
 The device characteristics and parameters in this data sheet can and do vary in different applications and actual device performance may vary over time.
 Users should verify actual device performance in their specific applications.

单击下面可查看定价，库存，交付和生命周期等信息

[>>WAY-ON\(维安\)](#)