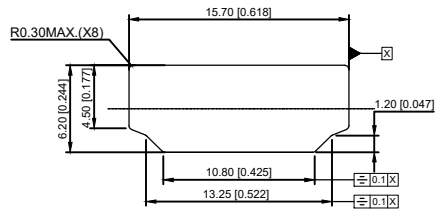
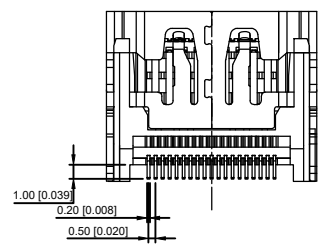


RECOMMENDED PCB LAYOUT (THICKNESS=1.6±0.15mm)
 RECOMMENDED P.C.B. LAYOUT (T:1.20mm)
 TOLERANCE UNSPECIFIED ±0.05mm



REFERENCE PANEL CUT OUT DIMENSION

XKB CONNECTIVITY

XKB CONNECTIVITY

SPECIFICATIONS

1. OPERATING CURRENT: 0.5A MAX.
2. OPERATION TEMPERATURE: -25 TO +85
3. DIELECTRIC WITHSTANDING VOLTAGE: 500Volts AC BETWEEN ADJACENT TERMINAL (UNMATE) 300Volts AC BETWEEN ADJACENT TERMINAL (MATE)
4. INSULATION RESISTANCE: 100Mohm MIN (UNMATED); 10Mohm MIN. (MATED)
5. HDMI SPECIFICATION COMPLIANCE

XKB CONNECTIVITY

A71-05H3-1X1N1

- 1: Au 1U"
- 5: Au 15U"
- 6: Au 30U"

3	CONTACTS	19	COPPER ALLOY, GOLD PLATED OVER NICKEL ON CONTACT AREA AND 100u" MIN. TIN PLATED OVER NICKEL ON SOLDER TAILS
2	HOUSING	1	THERMOPLASTIC UL94V-0
1	SHELL	1	COPPER ALLOY, NICKEL PLATED

					DSND	DATE	SCALE: N/A	MODEL TYPE: HDMI CONNECTOR
					DWN	DATE	VIEW:	PART NO.: A71-05H3-1X1N1
					CHKD	DATE	UNIT: mm/in	DWG NO.: A71-05H3-1X1N1
					APPD	DATE	SIZE: A4	WEIGHT SHEET REVISION
					KXB INDUSTRIAL PRECISION CO., LIMITED			1.0g 1/1 A0
ΔX					ANGULAR	±5°		
ΔX					L ≤ 4	±0.2		
ΔX					4 < L ≤ 16	±0.3		
MARK	DESCRIPTION	DATE	REVISED	APPROVED	16 < L ≤ 63	±0.4		
					L > 63	±0.5		
REVISIONS					UNSPECIFIED TOLERANCES			
www.xk-dg.cn www.helloxkb.com www.helloxkb.cn								

单击下面可查看定价，库存，交付和生命周期等信息

[>>XKB Connectivity\(中国星坤\)](#)