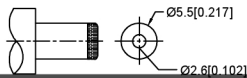
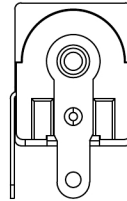
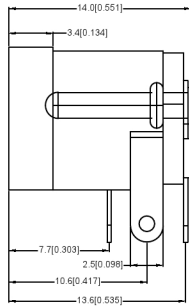
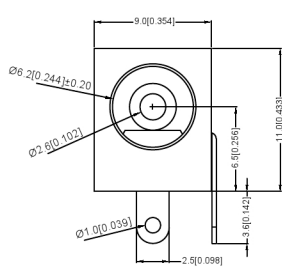


PCB LAYOUT TOP VIEW  
TOLERANCES: ±0.05



SCHEMATIC	
Model	DC-005
Center Pin	2.0
	2.5
	3.0

**SPECIFICATIONS:**

规格:

**1. ELECTRICAL CHARACTERISTICS:**

电气特性:

**1-1 RATING:**

评级:

1-2. CONTACT RESISTANCE: 30mΩ MAX. (INITIAL)

接触电阻: 最大30mΩ (初始)

1-3. DIELECTRIC WITHSTANDING VOLTAGE: 500V AC FOR ONE MINUTE

介质耐受电压: 500V AC FOR ONE MINUTE

1-4. INSULATION RESISTANCE: 100MΩ MIN. MEASURED BY 500V DC

绝缘电阻: 500V 直流电测得的最小值为100MΩ

**2. MECHANICAL CHARACTERISTICS:**

机械特性:

2-1. INSERTION FORCE: 0.3~3.0 KGF

插入力: 0.3~3.0 KGF

2-2. WITHDRAWAL FORCE: 0.3~3.0 KGF

拔出力: 0.3~3.0 KGF

3. LIFE TEST: 5,000 CYCLES MIN.

寿命试验: 至少5000次循环。

4. FOR REFLOW SOLDERING LEAD-FREE PROCESS.

用于回流焊无铅工艺。

5. REPRESENT CRITICAL DIMENSIONS.

表示关键尺寸。

	MATERIAL	PLATING
center pin	Brass	silver
terminal 1	Brass	silver
terminal 2	Phosphor Bronze	silver
terminal 3	Brass	silver
plastic	Pbt	

广东星坤科技股份有限公司  
MATING PLUG  
Jack Insertion Depth 9.0mm

MARK	DESCRIPTION	DATE	REVISED	APPROVED	UNSPECIFIED TOLERANCES
生		日期			
效					
文件工程章					

DSND	DATE	SCALE: N/A	MODEL TYPE: DC POWER JACK
DWN	DATE	VIEW:	PART NO.:
CHKD	DATE	UNIT: mm	DWG NO.:
APPD	DATE	SIZE: A4	DC-005-5A-2.5
			WEIGHT 1.0g
			SHEET 1/1
			REVISION A0

单击下面可查看定价，库存，交付和生命周期等信息

[>>XKB Connectivity\(中国星坤\)](#)