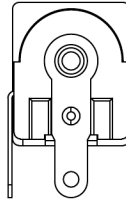
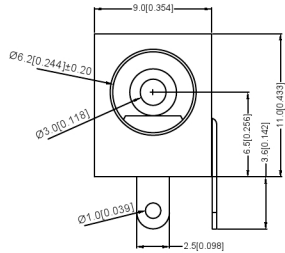
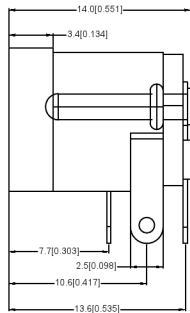


PCB LAYOUT TOP VIEW
TOLERANCES:±0.05



SPECIFICATIONS:

规格:

1. ELECTRICAL CHARACTERISTICS:

电气特性:

1-1.RATING:

评级:

1-2. CONTACT RESISTANCE:30mQ MAX (INITIAL)

接触电阻: 最大30mQ (初始)

1-3. DIELECTRIC WITHSTANDING VOLTAGE:500V AC FOR ONE MINUTE

介质耐受电压: 500V AC FOR ONE MINUTE

1-4.INSULATION RESISTANCE: 100MQ MIN. MEASURED BY 500V DC

绝缘电阻: 500V直流电测得的最小值为100MQ

2. MECHANICAL CHARACTERISTICS:

机械特性:

2-1. INSERTION FORCE:0.3~3.0 KGF

插入力: 0.3~3.0 KGF

2-2. WITHDRAWAL FORCE:0.3~3.0 KGF

拔出力: 0.3~3.0 KGF

3. LIFE TEST:5,000 CYCLES MIN.

寿命试验: 至少5000次循环。

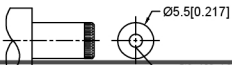
4.FOR REFLOW SOLDERING LEAD-FREE PROCESS.

用于回流焊无铅工艺。

5.REPRESENT CRITICAL DIMENSIONS.

表示关键尺寸。

	MATERIAL	PLATING
center pin	Brass	silver
terminal 1	Brass	silver
terminal 2	Phosphor Bronze	silver
terminal 3	Brass	silver
plastic	Pbt	



SCHEMATIC	Model
	DC-005
Center Pin	2.0
	2.5
	3.0

广东星洲科技股份有限公司
JACK Insertion Depth: 3.0 mm

生	日期
效	
文件工程章	

DATE	REVISED	APPROVED	UNSPECIFIED TOLERANCES

DSND	DATE	SCALE: N/A	MODEL TYPE:
			DC POWER JACK
DWN	DATE	VIEW:	PART NO.:
CHKD	DATE	UNIT: mm	DWG NO.:
			DC-005-5A-3.0
APPD	DATE	SIZE: A4	WEIGHT
			1.0g

SHEET	REVISION
1/1	A0

单击下面可查看定价，库存，交付和生命周期等信息

[>>XKB Connectivity\(中国星坤\)](#)