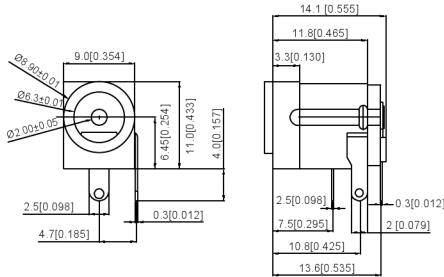
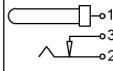


PCB LAYOUT TOP VIEW



SCHEMATIC	
Model	DC-005E
Center Pin	Ø2.0 mm
	Ø2.5 mm

SPECIFICATIONS:

规格:

1. ELECTRICAL CHARACTERISTICS:

电气特性:

1-1.RATING:

评级:

1-2. CONTACT RESISTANCE:30mΩ MAX.(INITIAL)

接触电阻: 最大30mΩ (初始)

1-3. DIELECTRIC WITHSTANDING VOLTAGE:500V AC FOR ONE MINUTE

介质耐受电压: 500V AC FOR ONE MINUTE

1-4.INSULATION RESISTANCE: 100MΩ MIN. MEASURED BY 500V DC

绝缘电阻: 500V 直流电测得的最小值为100MΩ

2. MECHANICAL CHARACTERISTICS:

机械特性:

2-1. INSERTION FORCE:0.3~3.0 KGF

插入力: 0.3~3.0 KGF

2-2. WITHDRAWAL FORCE:0.3~3.0 KGF

拔出力: 0.3~3.0 KGF

3. LIFE TEST:5,000 CYCLES MIN.

寿命试验: 至少5000次循环。

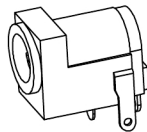
4.FOR REFLOW SOLDERING LEAD-FREE PROCESS.

用于回流焊无铅工艺。

5.REPRESENT CRITICAL DIMENSIONS.

表示关键尺寸。


	MATERIAL	PLATING
center pin	Brass	tin
terminal 1	Brass	tin
terminal 2	Sus	tin
terminal 3	Brass	tin
plastic	Pbt	



广东星坤科技股份有限公司

生	日期
效	
文件工程章	

DATE	REVISED	APPROVED	UNSPECIFIED TOLERANCES

DSND		DATE		SCALE: N/A	MODEL TYPE: DC POWER JACK	
DWN		DATE		VIEW: 	PART NO.:	
CHKD		DATE		UNIT: mm/in	DWG NO.:	
APPD		DATE		SIZE: A4	DC-005E-2.5A-2.0	
				WEIGHT	SHEET	REVISION
				1.0g	1/1	A0

单击下面可查看定价，库存，交付和生命周期等信息

[>>XKB Connectivity\(中国星坤\)](#)