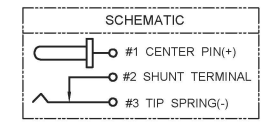
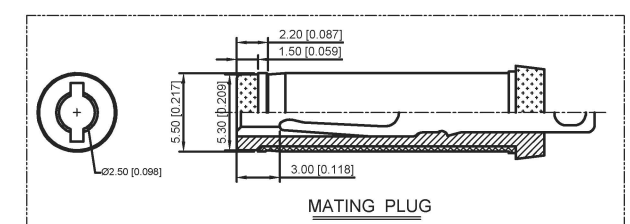
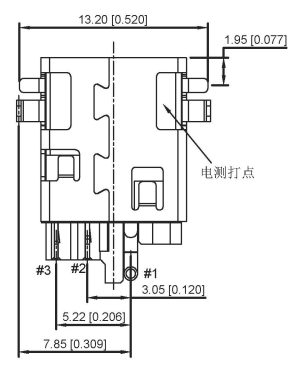
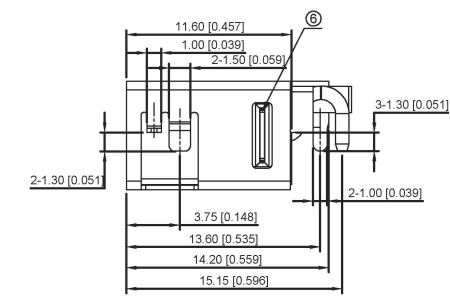
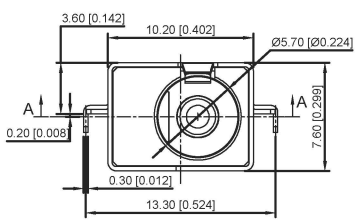


PCB LAYOUT TOP VIEW  
TOLERANCES: ±0.05



SPECIFICATIONS:  
 1. ELECTRICAL CHARACTERISTICS  
 1-1. RATING: DC 20V, 10A Min  
 1-2. CONTACT RESISTANCE: 30MΩ Max. (INITIAL)  
 1-3. DIELECTRIC WITHSTANDING VOLTAGE: 500V AC FOR ONE MINUTE.  
 1-4. INSULATION RESISTANCE: 100 MΩ Min. MEASURED BY 500V DC.  
 2. MECHANICAL CHARACTERISTICS:  
 2-1. INSERTION FORCE: 3.0 KGF Max.  
 2-2. WITHDRAWAL FORCE: 0.35 KGF Min.  
 3. LIFE TEST: 5000 CYCLES MIN.

NO.	PART NAME	QTY	MATERIAL (THICK)	PLATING (COLOR)
⑥	TERMINAL	1	SUS301	N/A
⑤	SHELL	1	C2680R-EH	Ni 50U
④	CENTER PIN(+)	1	C3601	Gold Flash Over Ni 50U
③	SHUNT TERMINAL	1	C2680E-EH	Gold Flash On Contact Area: 100U, Sn On Solder Tail All Over Ni 50U Min.
②	TIP SPRING(-)	1	C5210R-EH	
①	HOUSING	1	LCP UL 94V-0 (HF)	BLACK

广东星坤科技股份有限公司

生	日期
發	
ΔX	
MARK	

文件工程章

REVISIONS	DATE	REVISED	APPROVED	UNSPECIFIED TOLERANCES
				ANGULAR ±5°
				L ≤ 4 ±0.2
				4 < L ≤ 16 ±0.3
				16 < L ≤ 63 ±0.4
				L > 63 ±0.5

DSND	DATE	SCALE: N/A
DWN	DATE	VIEW:
CHKD	DATE	UNIT: mm/in
APPD	DATE	SIZE: A4

MODEL TYPE: DC POWER JACK		
PART NO.:		
DWG NO.:		
DC-011D-10A-2.5		
WEIGHT	SHEET	REVISION
1.0g	1/1	A0

KKB INDUSTRIAL PRECISION CO., LIMITED

单击下面可查看定价，库存，交付和生命周期等信息

[>>XKB Connectivity\(中国星坤\)](#)