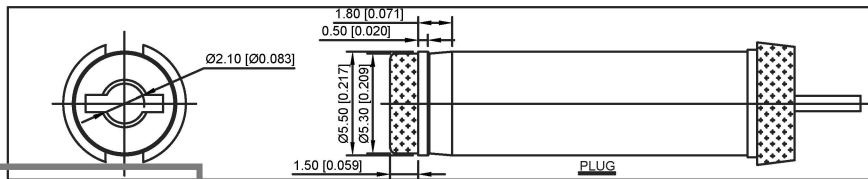
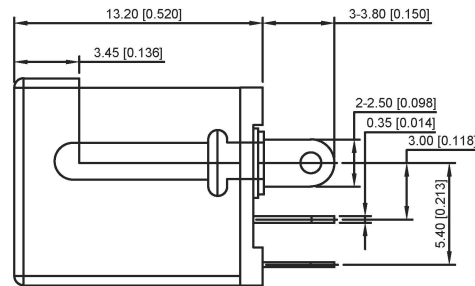
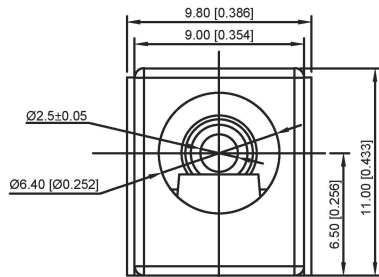
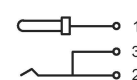


PCB LAYOUT TOP VIEW  
TOLERANCES: ±0.05



**SPECIFICATIONS.**

1. ELECTRICAL CHARACTERISTICS.
  - 1-1. RATING: 20V, 1A Min.
  - 1-2. CONTACT RESISTANCE: 50 MILLIOHMS Max. FOR INITIAL, 80 MILLIOHMS Max. AFTER 5000 CYCLES
  - 1-3. INSULATION RESISTANCE: 100 MEGAOHMS Min. BY 500V DC AFTER 1 MINUTE.
  - 1-4. DIELECTRIC WITHSTANDING VOLTAGE: 500V RMS AFTER 1 MINUTE.
2. MECHANICAL CHARACTERISTICS.
  - 2-1. INSERTION FORCE: 0.3~3.0 KGf (2.94~29.4N)
  - 2-2. WITHDRAWAL FORCE: 0.3~3.0 KGf (2.94~29.4N)
3. LIFE TEST: 5,000 CYCLES MIN.


SCHEMATIC	
Model	DC-012A-5A
Center Pin	Ø2.5 mm

广东星坤科技股份有限公司

生		日期							
發		日期							
ΔX									
MARK									
文件	工程	章							

REVISIONS  
www.xk-lg.cn www.helloxkb.com www.helloxkb.cn

ANGLAR	±5°
L ≤ 4	±0.2
4 < L ≤ 16	±0.3
16 < L ≤ 63	±0.4
L > 63	±0.5
UNSPECIFIED TOLERANCES	

DSND	DATE	SCALE: N/A	MODEL TYPE: DC POWER JACK
DWN	DATE	VIEW: 	PART NO.:
CHKD	DATE	UNIT: mm/in	DWG NO.:
APPD	DATE	SIZE: A4	DC-012A-5A-2.5
KKB INDUSTRIAL PRECISION CO., LIMITED			WEIGHT 1.0g
			SHEET 1/1
			REVISION A0

单击下面可查看定价，库存，交付和生命周期等信息

[>>XKB Connectivity\(中国星坤\)](#)