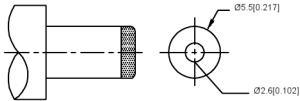
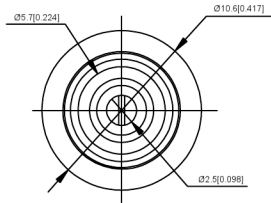


| | |
|------------|---------|
| SCHEMATIC | |
| Model | DC-025 |
| Center Pin | Ø2.0 mm |
| | Ø2.5 mm |



MATING PLUG
Jack Insertion Depth: 9.0 mm



| | MATERIAL | PLATING |
|-------------|-----------------|---------|
| axle sleeve | Brass | tin |
| plastic | Pbt | |
| center pin | Brass | tin |
| terminal 1 | Brass | tin |
| terminal 2 | Brass | tin |
| terminal 3 | Phosphor Bronze | tin |

广东星坤科技股份有限公司

| | |
|-------|-------------|
| 生 | 日期 |
| 效 | |
| Δ* | |
| MARK | DESCRIPTION |
| 文件工程章 | |

| | | | | | |
|------------------------|--|------|--|---------------------------------------|------------------------------|
| DSND | | DATE | | SCALE: N/A | MODEL TYPE: DC POWER JACK |
| DWN | | DATE | | VIEW: | PART NO.: |
| CHKD | | DATE | | UNIT: mm/in | DWG NO.: |
| APPD | | DATE | | SIZE: A4 | DC-025-5A-2.5 |
| UNSPECIFIED TOLERANCES | | | | YKP INDUSTRIAL PRECISION CO., LIMITED | WEIGHT 1.0g |
| | | | | | SHEET 1/1 |
| | | | | | REVISION A0 |

单击下面可查看定价，库存，交付和生命周期等信息

[>>XKB Connectivity\(中国星坤\)](#)