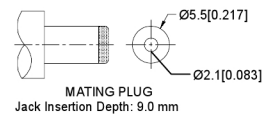
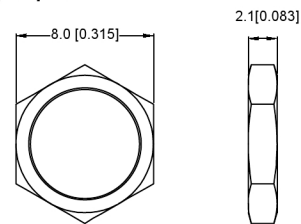
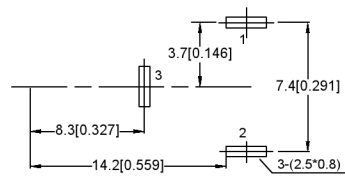
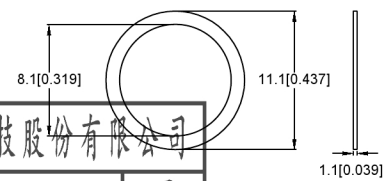


P.C.B LAYOUT (top view)



SCHEMATIC	
Model	DC-026LBM
Center Pin	$\phi 2.0$ mm
	$\phi 2.5$ mm

	MATERIAL	PLATING
axle sleeve	Brass	tin
plastic	Pbt	
center pin	Brass	tin
terminal 1	Brass	tin
terminal 2	Brass	tin
terminal 3	Phosphor Bronze	tin



广东星坤科技股份有限公司

生	日
数	期
文件工程章	

REVISIONS

				ANGLAR	$\pm 5^{\circ}$	DSND		DATE		SCALE: N/A	MODEL TYPE: DC POWER JACK
				X.X	± 0.2 mm	DWN		DATE		VIEW:	PART NO.:
				X.XX	± 0.1 mm	CHKD		DATE		UNIT: mm/in	DWG NO.:
				X.XXX	± 0.05 mm	APPD		DATE		SIZE: A4	DC-026LBM-5A-2.0
		DATE	REVISED	APPROVED							WEIGHT
											SHEET
											REVISION

单击下面可查看定价，库存，交付和生命周期等信息

[>>XKB Connectivity\(中国星坤\)](#)