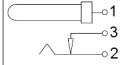
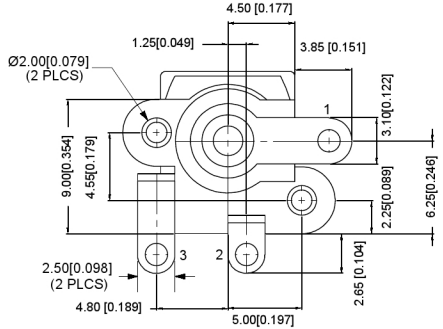
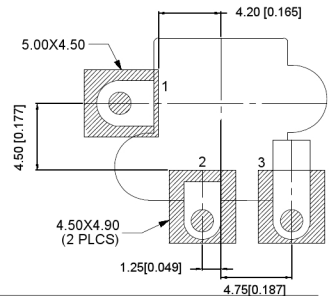


MATING PLUG  
Jack Insertion Depth: 8.95mm

SCHEMATIC	
Model	DC-531
Center Pin	Ø2.0 mm
	Ø2.5 mm




	MATERIAL	PLATING
center pin	Brass	tin
terminal 1	Brass	tin
terminal 2	Phosphor Bronze	tin
terminal 3	Brass	tin
plastic	PA6T	

广东星坤科技股份有限公司

生	日期				
效					
Δ					
Δ					
Δ					
MARK	DESCRIPTION	REVISIONS	DATE	REVISED	APPROVED
文件工程章					

ANGULAR	±5°
X.X	±0.2mm
X.XX	±0.1mm
X.XXX	±0.05mm
UNSPECIFIED TOLERANCES	

DSND	DATE	SCALE: N/A	MODEL TYPE: DC POWER JACK
DWN	DATE	VIEW: 	PART NO.:
CHKD	DATE	UNIT: mm/in	DWG NO.: DC-531-2.5
APPD	DATE	SIZE: A4	
			WEIGHT 1.0g
			SHEET 1/1
			REVISION A0

单击下面可查看定价，库存，交付和生命周期等信息

[>>XKB Connectivity\(中国星坤\)](#)