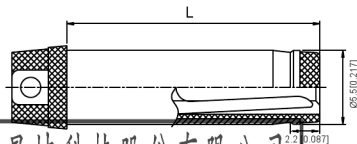
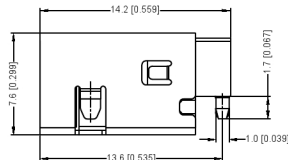
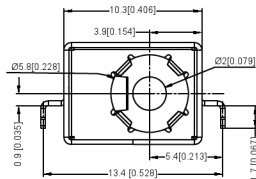


SPECIFICATION

- 规格
1. Rating: DC 20V 5.5A;
 额定值: 直流20V 5.5A,
2. Contact resistance: <0.03Ω;
 接触电阻: <0.03Ω;
3. Insulation resistance: 2100MΩ(DC250V)
 绝缘电阻: 2100MΩ(DC250V)
4. Withstand voltage: 500VAC
 耐压: 500VAC
5. Insertion and extraction force: 3-30N;
 插拔力: 3-30N;
6. life test: 5,000 cycles.
 寿命试验: 5,000次循环。



SCHEMATIC	
Model	DC-C033D-5.5A
Center Pin	∅2.0 mm
	∅2.5 mm

	MATERIAL	PLATING
center pin	Brass	tin
coat	Sus	
terminal 2	Phosphor Bronze	tin
terminal 3	Brass	tin
terminal 4	Brass	tin
terminal 5	Brass	tin
plastic	Pa9t	

广东星坤科技股份有限公司

生	日期	ANGULAR	±5°	DSND	DATE	SCALE: N/A	MODEL TYPE:
效		X.X	±0.2mm	DWN	DATE	VIEW:	DC POWER JACK
效		X.XX	±0.1mm	CHKD	DATE	UNIT: mm/in	PART NO.:
Δ*		X.XXX	±0.05mm	APPD	DATE	SIZE: A4	DWG NO.:
MARK	DESCRIPTION	DATE	REVISED	APPROVED	UNSPECIFIED TOLERANCES	DC-C033D-5.5A-2.5	
文件	工程章	REVISIONS			WGT	SHEET	REVISION
					1.0g	1/1	A0

单击下面可查看定价，库存，交付和生命周期等信息

[>>XKB Connectivity\(中国星坤\)](#)