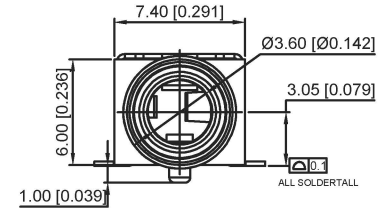


RECOMMENDED P.C.B. LAYOUT (TOP VIEW)
(GENERAL TOLERANCE ±0.05)



PJ-3942
COPPER SLEEVE

SPECIFICATIONS:

- ELECTRICAL CHARACTERISTICS:
 - RATING: 12V 1A
 - CONTACT RESISTANCE: 30mΩ MAX. (INITIAL)
 - DIELECTRIC WITHSTANDING VOLTAGE: 500V AC FOR ONE MINUTE
 - INSULATION RESISTANCE: 100MΩ MIN. MEASURED BY 500V DC
- MECHANICAL CHARACTERISTICS:
 - INSERTION FORCE: 4~30N
 - WITHDRAWAL FORCE: 4~30N
 - LIFE TEST: 5,000 CYCLES MIN.

PJ-394X-X-SMT

S: silver
G: gold

	MATERIAL	PLATING
terminal 1	copper alloy	ag/au
terminal 2	copper alloy	ag/au
terminal 3	copper alloy	ag/au
terminal 4	copper alloy	ag/au
shell	copper alloy	ag/au
plastic	PPA	

广东星坤科技股份有限公司

生效日期

文件工程章

日期

REVISIONS

www.helloxk.com www.helloxk.com www.helloxk.com

ANGLAR	±5°
L ≤ 4	±0.2
4 < L ≤ 16	±0.3
16 < L ≤ 63	±0.4
L > 63	±0.5

UNSPECIFIED TOLERANCES

DSND		DATE		SCALE: N/A	MODEL TYPE: 3.5 PHONE JACK
DWN		DATE		VIEW:	PART NO.:
CHKD		DATE		UNIT: mm/in	DWG NO.:
APPD		DATE		SIZE: A4	PJ-394X-X-SMT
XKB INDUSTRIAL PRECISION CO., LIMITED					WEIGHT 1.0g
					SHEET 1/1
					REVISION A0

单击下面可查看定价，库存，交付和生命周期等信息

[>>XKB Connectivity\(中国星坤\)](#)