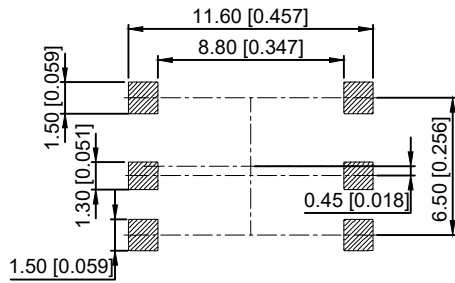
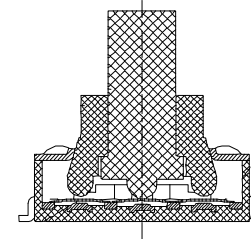
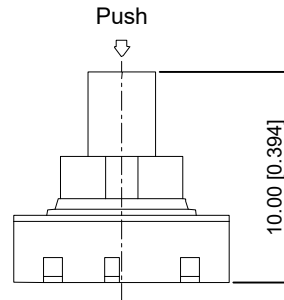
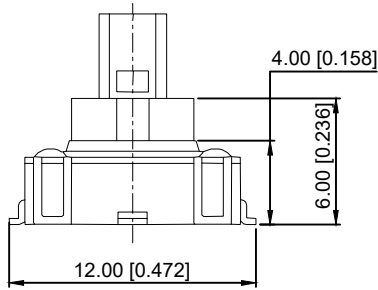


Circuit Diagram

NOTE:
 Operating Force:
 4-direction 160 ± 35 gf
 center push 300 ± 35 gf
 Travel 4-direction $5^\circ \pm 2^\circ$
 center push 0.20 ± 0.1 mm



PCB Layout(Pattern side)

| ITEM | PAPT NAMF | TER,NO | QTY | MATERIAL | FINISHING | REMARK |
|------|-------------|--------|-----|--------------|----------------|--------|
| ⑦ | Dust cover | — | 1 | Kapton film | | |
| ⑥ | Contact | — | 6 | F.ag/Brass | Plating silver | |
| ⑤ | Terminal | — | 8 | Brass(0.15t) | Plating silver | |
| ④ | Base | — | 1 | Lcp | | |
| ③ | Cover | — | 1 | Sus | Plating sn | |
| ② | Axle sleeve | — | 1 | Lcp | | |
| ① | Knob | — | 1 | Lcp | | |

| | | | | | ANGLAR | $\pm 5^\circ$ | DSND | | DATE | | SCALE: N/A | MODEL TYPE: MULTI-FUNCTIONAL SWITCH | | |
|---|-------------|------|---------|----------|------------------------|---------------|---------------------------------------|--|------|--|-------------|--|-------|----------|
| ΔX | | | | | $L \leq 4$ | ± 0.2 | DWN | | DATE | | VIEW: | PART NO.: | | |
| Δx | | | | | $4 < L \leq 16$ | ± 0.3 | CHKD | | DATE | | UNIT: mm/in | DWG NO.: | | |
| Δx | | | | | $16 < L \leq 63$ | ± 0.4 | APPD | | DATE | | SIZE: A4 | TM-2027 | | |
| MARK | DESCRIPTION | DATE | REVISED | APPROVED | $L > 63$ | ± 0.5 | | | | | | WEIGHT | SHEET | REVISION |
| REVISIONS | | | | | UNSPECIFIED TOLERANCES | | XKB INDUSTRIAL PRECISION CO., LIMITED | | | | | 1.0g | 1/1 | A0 |
| www.xk-dg.cn www.helloxkb.com www.helloxkb.cn | | | | | | | | | | | | | | |

单击下面可查看定价，库存，交付和生命周期等信息

[>>XKB Connectivity\(中国星坤\)](#)