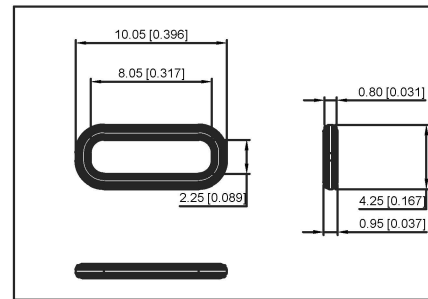
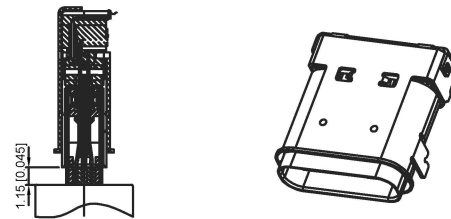
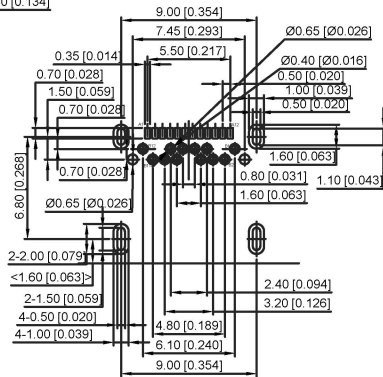
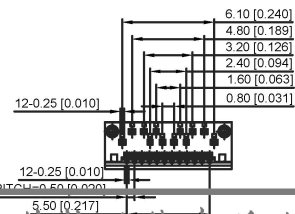
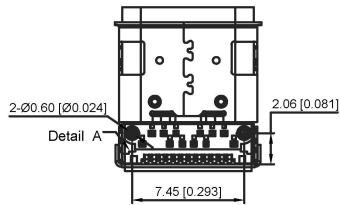
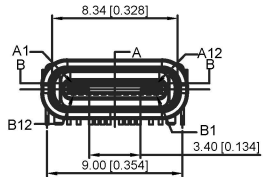


| Pin | Signal Name | Mating Sequence | Pin | Signal Name | Mating Sequence |
|-------|-------------|-----------------|-----|-------------|-----------------|
| A1 | GND | First | B12 | GND | First |
| A5 | SS1xp1 | Second | B11 | SS1xp1 | Second |
| A5 | SS1n1 | Second | B10 | SS1n1 | Second |
| A4 | Vas | First | B9 | Vas | First |
| A5 | CC1 | Second | B8 | SB12 | Second |
| A6 | bp1 | Second | B7 | bp2 | Second |
| A7 | bn1 | Second | B6 | bp2 | Second |
| A8 | SB11 | Second | B5 | CC2 | Second |
| A9 | Vas | First | B4 | Vas | First |
| A10 | SS1xp2 | Second | B3 | SS1n2 | Second |
| A11 | SS1xp2 | Second | B2 | SS1xp2 | Second |
| A12 | GND | First | B1 | GND | First |
| SHELL | GND | SHELL | GND | SHELL | GND |



Material
 Housing Material: High temperature thermoplastic
 Contact Terminal: High Grade Copper Alloy
 Metallic Shell: Stainless Steel
 Cover Shell: Iron
 Inner Ground Cover Shell: Stainless Steel
 Mid Plate: Stainless Steel
Plating
 Data Contact
 Underplating: 50µ" Min. Nickel
 Contact Plating: 1µ" Gold
 Solder Area: 80µ" Matte Tin
Shell
 Metallic Shell: 50µ" Min. Nickel
 Cover Shell
 Metallic Shell: 80µ" Min. Nickel
 Inner Ground Cover Shell
 Metallic Shell: 50µ" Min. Nickel
Electrical
 Voltage Rating: 20V DC
 Current Rating: Vbus pins collectively 5.00A, GND pins collectively 6.25A, B5 pin 1.25A, Other pins 0.25A per pin.
 Contact Resistance: 40mΩ Max.
 Insulation resistance: 100 MΩ MIN.
 Dielectric withstanding voltage: 100V AC/Minute
Mechanical
 Durability: 10,000 cycles
 Mating Force: 5 to 20N
 Unmating Force: 8 to 20N (post test)

USB31-TYPEC-33X41- XFS

- 1: Tray 2: Tape reel
- 41: IP67
- 52: IP54
- 53: 不防水
- 1: G/F 2: 5u" 3: 10u"
- 4: 15u" 5: 30u"

广东星坤科技股份有限公司

生 效 日期

文件工程章

REVISIONS

www.hellokx.com www.hellokx.com

| | | | |
|---------------------------------------|------|-------------|-----------------------|
| DSND | DATE | SCALE: N/A | MODEL TYPE: |
| DWN | DATE | VIEW: | USB 3.1 TYPE |
| CHKD | DATE | UNIT: mm/in | PART NO.: |
| APPD | DATE | SIZE: A4 | DWG NO.: |
| | | | USB31-TYPEC-33X41-XFS |
| XKB INDUSTRIAL PRECISION CO., LIMITED | | | WEIGHT |
| | | | 1.0g |
| | | | SHEET |
| | | | 1/1 |
| | | | REVISION |
| | | | A0 |

单击下面可查看定价，库存，交付和生命周期等信息

[>>XKB Connectivity\(中国星坤\)](#)