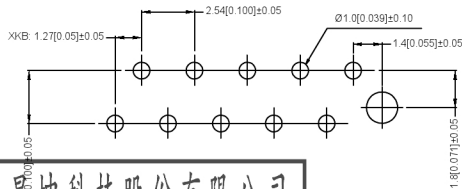
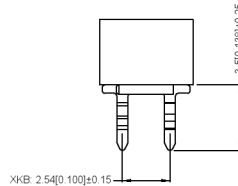
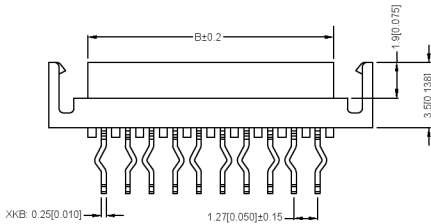


Specifications
 规格:
 Voltage rating 500V AC/DC
 额定电压: 500V AC/DC
 Current rating: 1A AC/DC
 额定电流: 1A AC/DC
 Withstanding voltage: 1000V AC/minute
 耐压电压: 1000V AC/分钟
 Temperature range: -40°C ~ +105°C
 温度范围: -40°C ~ +105°C
 Insulation resistance: ≥1000MΩ
 绝缘电阻: ≥1000MΩ
 Contact resistance: ≤20mΩ
 接触电阻: ≤20mΩ
 After environment testing: ≤30mΩ
 环境试验后: ≤30mΩ

X9127 W V X-XX B - 9T SN XX

① ② ③ ④ ⑤ ⑥ ⑦ ⑧ ⑨

- ① Series No.
- ② Category: W-wafer
- ③ Welding Board Angle: V-Straight 180°
- ④ Welding Way: Blank-DIP
- ⑤ Row No.-Pin No.: XX-04P~26P
- ⑥ Plug the Pin & Special No.:
 B-With boss and tail. With Ear. Concave
- ⑦ Material: 9T-Nylon 9T 94V-0
- ⑧ Plating Category: SN-Bright tin Plating
- ⑨ Color: RE-Red RD-purplish red



Poles	Dimensions(mm)			Poles	Dimensions(mm)		
	A	B	C		A	B	C
4	3.81	5.50	9.71	16	19.05	20.74	24.95
6	6.35	8.04	12.25	18	21.59	23.28	27.49
8	8.89	10.58	14.79	20	24.13	25.82	30.03
10	11.43	13.12	17.33	22	26.67	28.36	32.57
12	13.97	15.66	19.87	24	29.21	30.90	35.11
14	16.51	18.20	22.41	26	31.75	33.44	37.65

X9127W-XXB-9TSNRD	Purplish red	PA9T UL 94V-0	Brass	Tin-Plated
X9127W-XXB-9TSNRE	RED			
PART NO	Color	Material	Material(Pin)	Finish(Pin)

广东星坤科技股份有限公司
 Recommended PCB Board Layout

生	日期
發	
Δ	
文件工程	REVISIONS
www.xkpcb.com	www.hellixkb.com

UNSPECIFIED TOLERANCES	ANGLAR	±5°
L ≤ 4	±0.2	
4 < L ≤ 16	±0.3	
16 < L ≤ 63	±0.4	
L > 63	±0.5	

DSND	DATE	SCALE: NA	MODEL TYPE:
DWN	DATE	VIEW:	PART NO.:
CHKD	DATE	UNIT: mm/in	1.27 mm Crimp Style Connectors
APPD	DATE	SIZE: A4	DWG NO.:
X9127WV-XXB-9TSNXX			
WEIGHT	SHEET	REVISION	
1.0g	1/1	A0	

单击下面可查看定价，库存，交付和生命周期等信息

[>>XKB Connectivity\(中国星坤\)](#)