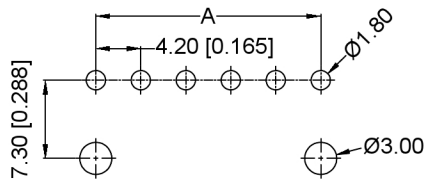
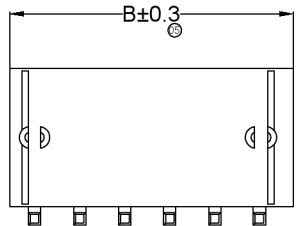
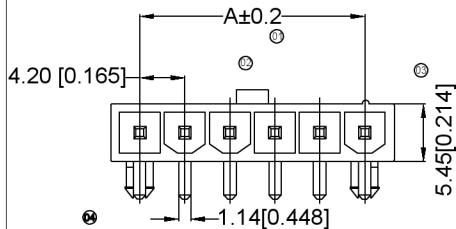
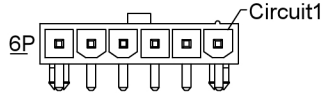
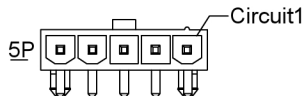
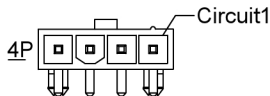
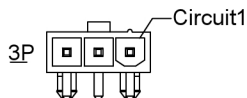
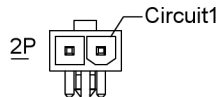


XKB



Recommended PCB Layout
General Tolerance: ±0.05



Specifications:

规格: **XKB**
 Voltage rating: 600V AC/DC
 额定电压: 600V AC/DC
 Current rating: 9A AC/DC
 额定电流: 9A AC/DC
 Withstanding voltage: 1500V AC/minute
 耐受电压: 1500V AC/分钟
 Temperature range: -25°C +85°C
 温度范围: -25°C +85°C
 Insulation resistance: ≥1000MΩ
 绝缘电阻: ≥1000MΩ
 Contact resistance: ≤10mΩ
 接触电阻: ≤10mΩ
 After environmental testing: ≤20mΩ
 环境测试后: ≤20mΩ

X9357WR X-XX S-XXSNXX
 ○○○○○○ ○○○○○○

- 01 Series No.
- 02 Category: W-wafer
- 03 Welding Board Angle: R-Right Angle 90°
- 04 Welding Way: Blank-DIP;
- 05 Row No. -Pin No.: XX-Single row
- 06 Special NO.: S-W/with positioning column
- 07 Material: N0-PA66 94V-0;
N2-PA66 94V-2
- 08 Plating Category: SN-Bright tin plating
- 09 Color: E-Blank-natural color ;BK-Black

Poles	Dimensions(mm)	
	A	B
02	4.20	9.60
03	8.40	13.80
04	12.60	18.00
05	16.80	22.20
06	21.00	26.40

X9357WR-XXS-N2SNBK	Nylon 66 UL94V-2 (Black)	Brass	Tin-Plated	X9357H
X9357WR-XXS-N0SN	Nylon 66 UL 94V-0			
X9357WR-XXS-N2SN	Nylon 66 UL 94V-2			
PART NO	Material	Material(Pin)	Finish(Pin)	Suitable XKB Terminal

广东星坤科技股份有限公司

生 日期

文件工程章

REVISIONS

www.heloxkb.com

XKB	ANGULAR	±5°
	L ≤ 4	±0.2
	4 < L ≤ 16	±0.3
	16 < L ≤ 63	±0.4
	L > 63	±0.5

DSND	DATE	SCALE: NA	MODEL TYPE: X9357WR-XXS-XXSNXX
DWNN	DATE	VIEW: ①	PART NO.:
CHKD	DATE	UNIT: mm/in	2.40mm Crimp Style Connectors
APPD	DATE	SIZE: A4	DWG NO.:
VXP INDUSTRIAL PRECISION CO., LIMITED			WEIGHT 1.0g
			SHEET 1/1
			REVISION A0

单击下面可查看定价，库存，交付和生命周期等信息

[>>XKB Connectivity\(中国星坤\)](#)