

DATA SHEET

WIRELESS COMPONENTS

Diplexer
DPX1608LL80R2455A

2.4 AND 5 GHZ
1608 Series



FEATURES

- Compact size design
- RoHS compliant

APPLICATIONS

- WLAN, 802.11a/b/g/n
- ISM Band

ORDERING INFORMATION

All part numbers are identified by the series, packing type, material, size, antenna type, working frequency and packing quantity.

PART NUMBER

DPX 1608 LL 80 R 2455A

(1) (2) (3) (4) (5) (6)

(1) PRODUCT

DPX = Diplexer

(2) SIZE

1608 = 1.6 × 0.8 mm

(3) MATERIALS

Material Code LL

(4) TYPE

80 = Type 80

(5) PACKING STYLE

R = Tape and Reel

(6) WORKING FREQUENCY

2455 = 2.4/5GHz

PHYCOMP CTC

CFL4111715802524K

I2NC

411171580252

SPECIFICATION

Table 1

DESCRIPTION	VALUE	
Pass Band	Low Band	High Band
	2400~2500MHz	4900~6000MHz
Insertion loss	0.7dB (Max) at 25°C	0.8dB (Max) at 25°C
Return-Loss	10.0dB (Min)	12.0dB (Min)
Attenuation	20dB (Min) .@4.8~5GHz 20dB (Min) .@7.2~7.5GHz	28dB (Min) .@860~960MHz
		23dB (Min) .@1545~1605MHz
Isolation	Middle Band to High Band: 20dB (Min) . @4.9~5.95GHz	23dB (Min) .@1710~1990GHz
		28dB (Min) .@2.17GHz
		8dB (Min) .@8.1GHz
		15dB (Min) .@8.82~9.8GHz
		27dB (Min) .@9.8~11.8GHz
Operating Temperature	-40 ~ 85°C	
Dimension	1.6 x 0.8 x0.6mm	

DIMENSIONS

Table 2 Mechanical Dimension

	DIMENSION
L (mm)	1.60±0.15
W (mm)	0.80±0.15
T (mm)	0.60±0.15
P1 (mm)	0.20±0.15
P2 (mm)	0.20±0.15
P3 (mm)	0.20±0.15
P4 (mm)	0.20±0.15
P5 (mm)	0.20±0.15
P6 (mm)	0.20±0.15
D1 (mm)	0.20±0.15
D2 (mm)	0.30±0.10
D3 (mm)	0.15±0.10

OUTLINES

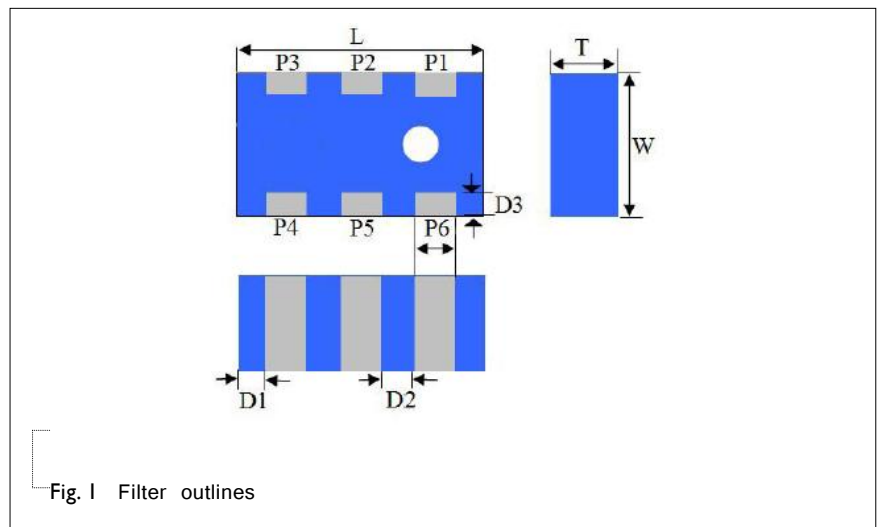


Table 3 Termination configuration

TERMINAL NAME	FUNCTION
P1	Low band port
P2	Ground
P3	High band port
P4	Ground
P5	Common port
P6	Ground

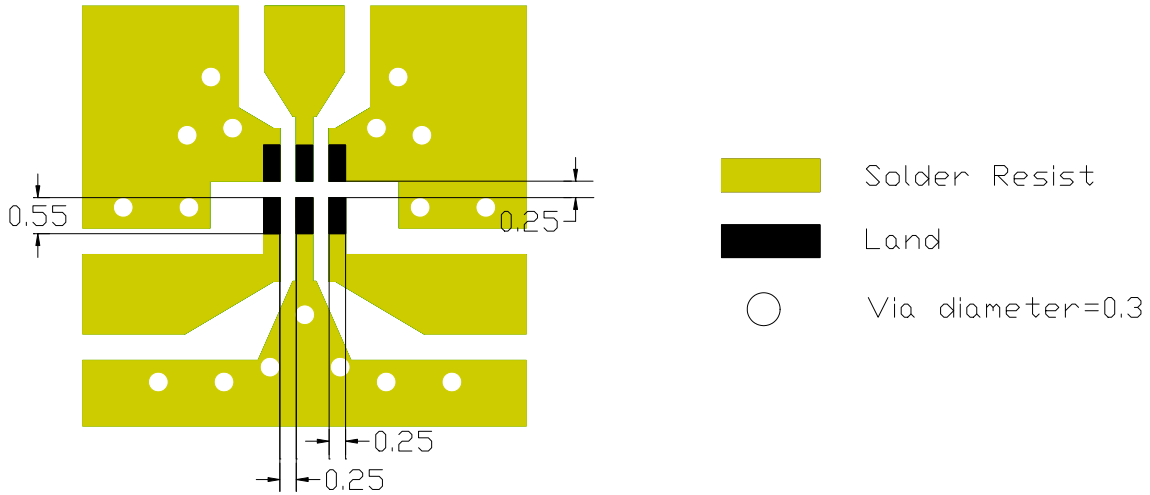
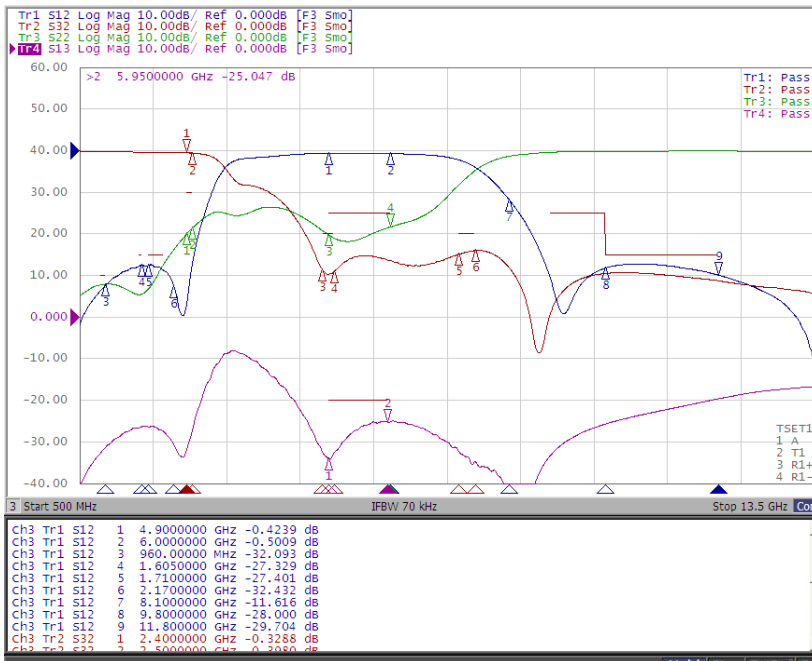


Fig.2 Reference design of evaluation board

ELECTRICAL PERFORMANCES



- Measured on Agilent E5071C Network Analyzer
- Port 1, 2 and 3 in Network Analyzer is connected to device as below
- ◆ Port 1 : High band port
- ◆ Port 2 : Common port
- ◆ Port 3 : Low band port
- ◆ S22 : Return loss for low and high band
- ◆ S32 : Insertion loss and attenuation for low band
- ◆ S12 : Insertion loss and attenuation for high band

Fig.3 Frequency Characteristics

REVISION HISTORY

REVISION	DATE	CHANGE NOTIFICATION	DESCRIPTION
Version 3	Mar 21, 2018		- Update drawing and description of Electrical performance.
Version 2	Aug 18, 2014		- Update specification
Version 1	Aug 05, 2014		- New data sheet of Diplexer

单击下面可查看定价，库存，交付和生命周期等信息

[>>Yageo\(国巨\)](#)