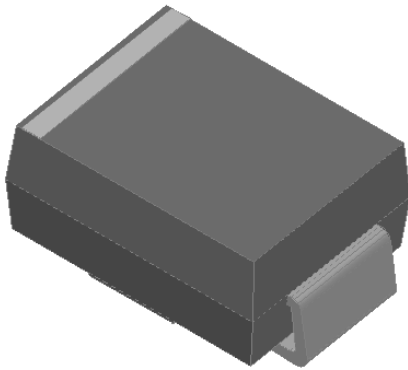


## Surface Mount Schottky Rectifier

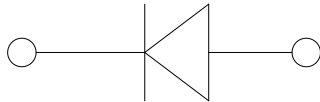


### Features

- Low profile package
- Ideal for automated placement
- Guardring for overvoltage protection
- Low power losses, high efficiency
- High forward surge capability
- Meets MSL level 1, per J-STD-020, LF maximum peak of 260 °C

### Typical Applications

For use in low voltage high frequency inverters, freewheeling, DC/DC converters, and polarity protection applications.



### Mechanical Data

- **Package:** DO-214AA (SMB)  
Molding compound meets UL 94 V-0 flammability rating, RoHS-compliant, halogen-free
- **Terminals:** Tin plated leads, solderable per J-STD-002 and JESD22-B102
- **Polarity:** Cathode line denotes the cathode end

### ■ Maximum Ratings ( $T_a=25^\circ\text{C}$ Unless otherwise specified)

| PARAMETER  | SYMBOL    | UNIT             | SS32B     | SS33B | SS34B | SS35B     | SS36B | SS38B | SS310B | SS315B | SS320B |
|--|-----------|------------------|-----------|-------|-------|-----------|-------|-------|--------|--------|--------|
| Device marking code  |           |                  | SS32B     | SS33B | SS34B | SS35B     | SS36B | SS38B | SS310B | SS315B | SS320B |
| Repetitive peak reverse voltage  | VRRM      | V                | 20        | 30    | 40    | 50        | 60    | 80    | 100    | 150    | 200    |
| Average rectified output current @60Hz sine wave, resistance load, $T_a$ (FIG.1)           | $I_O$     | A                | 3.0       |       |       |           |       |       |        |        |        |
| Surge(non-repetitive)forward current @60Hz half-sine wave, 1 cycle, $T_a=25^\circ\text{C}$ | IFSM      | A                | 70        |       |       |           |       |       |        |        |        |
| Storage temperature  | $T_{stg}$ | $^\circ\text{C}$ | -55 ~+150 |       |       |           |       |       |        |        |        |
| Junction temperature   | $T_j$     | $^\circ\text{C}$ | -55~+125  |       |       | -55 ~+150 |       |       |        |        |        |

### ■ Electrical Characteristics ( $T_a=25^\circ\text{C}$ Unless otherwise specified)

| PARAMETER  | SYMBOL | UNIT | TEST CONDITIONS         | SS32B | SS33B | SS34B | SS35B | SS36B | SS38B | SS310B | SS315B | SS320B |
|--|--------|------|-------------------------|-------|-------|-------|-------|-------|-------|--------|--------|--------|
| Maximum instantaneous forward voltage drop per diode                         | $V_F$  | V    | IFM=3.0A                | 0.50  |       |       | 0.70  |       | 0.85  |        | 0.90   |        |
| Maximum DC reverse current at rated DC blocking voltage per diode @ VRM=VRRM | IRRM   | mA   | $T_a=25^\circ\text{C}$  | 0.50  |       |       |       |       | 0.10  |        |        |        |
|  |        |      | $T_a=100^\circ\text{C}$ | 10    |       |       |       |       | 5     |        |        |        |



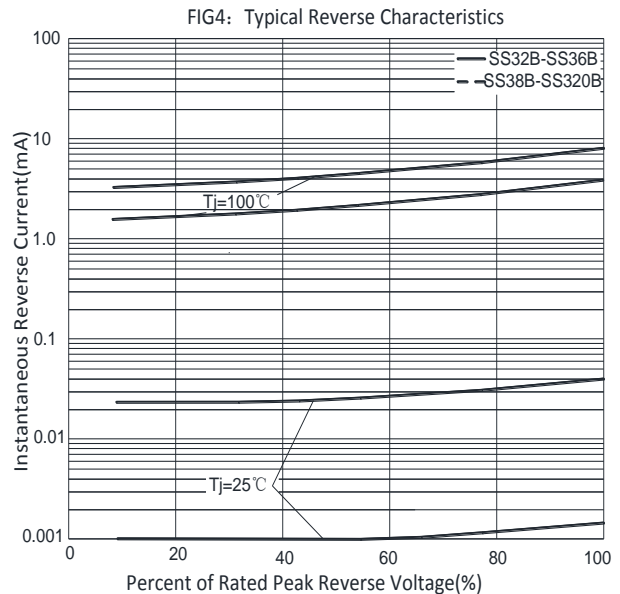
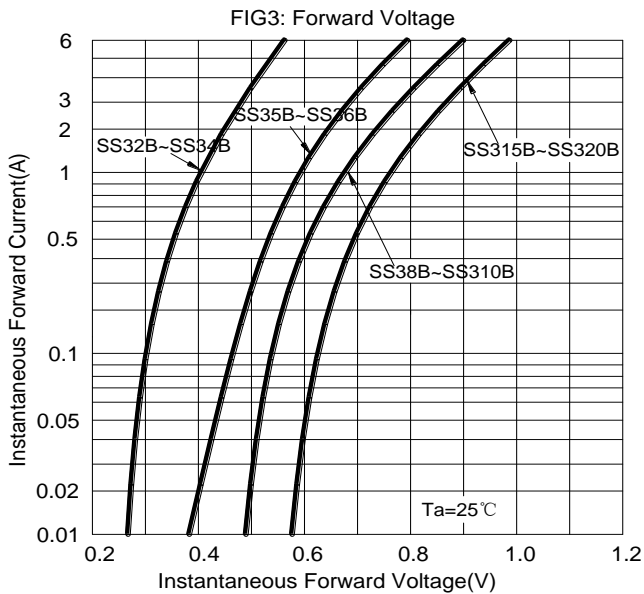
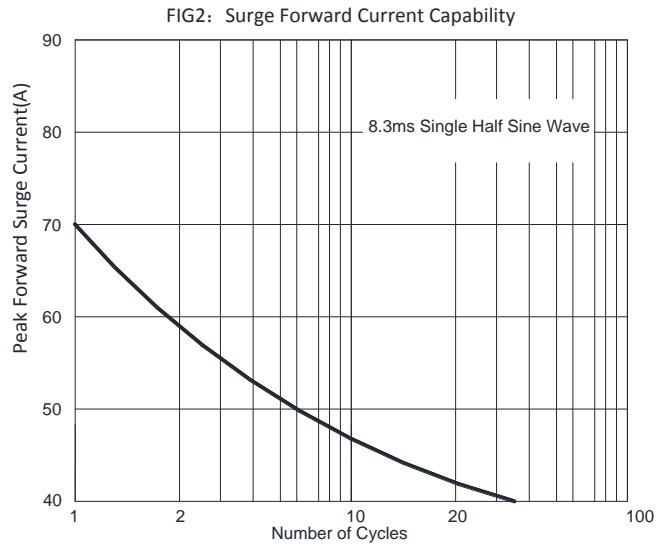
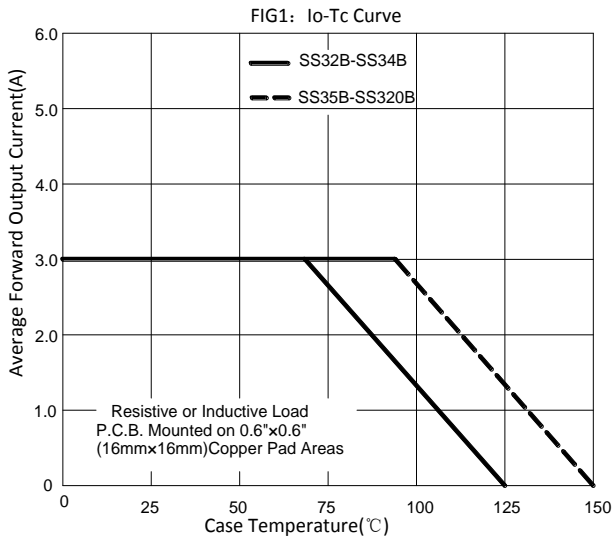
# SS32B THRU SS320B

## ■ Thermal Characteristics (T<sub>a</sub>=25°C Unless otherwise specified)

| PARAMETER          | SYMBOL            | UNIT | SS32B             | SS33B | SS34B | SS35B | SS36B | SS38B | SS310B | SS315B | SS320B |
|--------------------|-------------------|------|-------------------|-------|-------|-------|-------|-------|--------|--------|--------|
| Thermal resistance | R <sub>θJ-A</sub> | °C/W | 55 <sup>(1)</sup> |       |       |       |       |       |        |        |        |
|                    | R <sub>θJ-C</sub> |      | 20 <sup>(1)</sup> |       |       |       |       |       |        |        |        |

Note:  
 (1) Thermal resistance from junction to ambient and from junction to lead mounted on P.C.B. with 0.6" x 0.6" (16 mm x 16mm) copper pad areas

## ■ Characteristics(Typical)



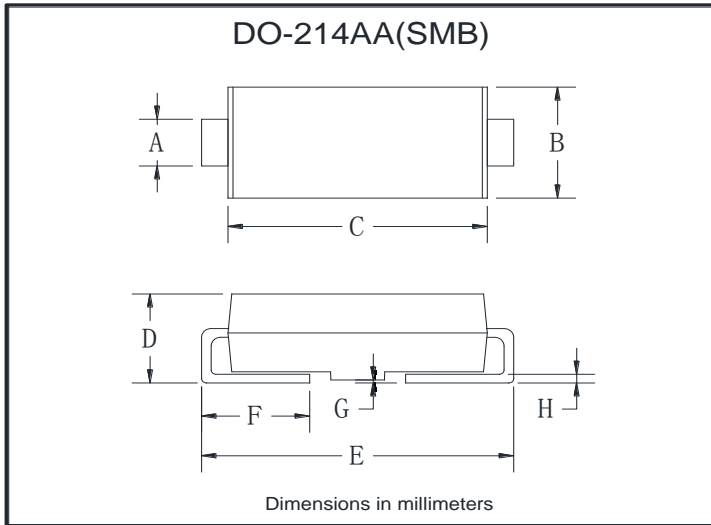


# SS32B THRU SS320B

## ■ Ordering Information (Example)

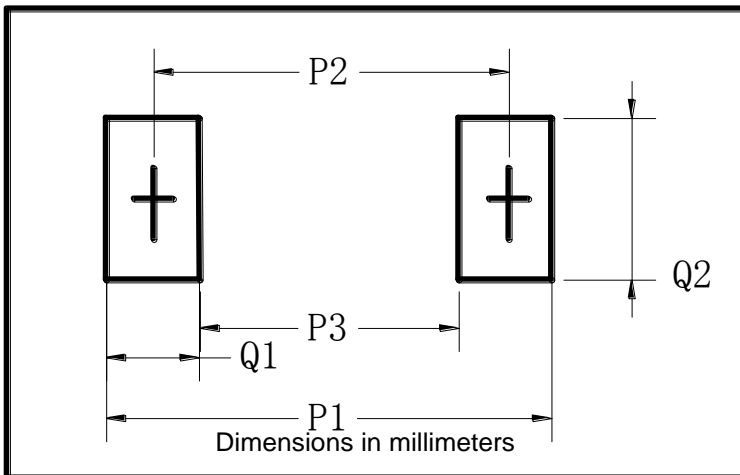
| PREFERED P/N | PACKING CODE | UNIT WEIGHT(g)    | MINIMUM PACKAGE(pcs) | INNER BOX QUANTITY(pcs) | OUTER CARTON QUANTITY(pcs) | DELIVERY MODE |
|--------------|--------------|-------------------|----------------------|-------------------------|----------------------------|---------------|
| SS32B-SS320B | F1           | Approximate 0.096 | 3000                 | 6000                    | 48000                      | 13" reel      |
| SS32B-SS320B | F2           | Approximate 0.096 | 750                  | 3000                    | 24000                      | 7" reel       |
| SS32B-SS320B | F3           | Approximate 0.096 | 500                  | 2000                    | 16000                      | 7" reel       |

## ■ Outline Dimensions



| DO-214AA(SMB) |      |      |
|---------------|------|------|
| Dim           | Min  | Max  |
| A             | 1.85 | 2.15 |
| B             | 3.30 | 3.94 |
| C             | 4.25 | 4.75 |
| D             | 1.99 | 2.61 |
| E             | 5.21 | 5.59 |
| F             | 0.90 | 1.41 |
| G             | 0.10 | 0.20 |
| H             | 0.15 | 0.31 |

## ■ Suggested pad layout



| DO-214AA(SMB) |             |
|---------------|-------------|
| Dim           | Millimeters |
| P1            | 6.8         |
| P2            | 4.3         |
| P3            | 1.8         |
| Q1            | 2.5         |
| Q2            | 2.3         |



## SS32B THRU SS320B

---

### Disclaimer

The information presented in this document is for reference only. Yangzhou Yangjie Electronic Technology Co., Ltd. reserves the right to make changes without notice for the specification of the products displayed herein to improve reliability, function or design or otherwise.

The product listed herein is designed to be used with ordinary electronic equipment or devices, and not designed to be used with equipment or devices which require high level of reliability and the malfunction of which would directly endanger human life (such as medical instruments, transportation equipment, aerospace machinery, nuclear-reactor controllers, fuel controllers and other safety devices), Yangjie or anyone on its behalf, assumes no responsibility or liability for any damages resulting from such improper use of sale.

This publication supersedes & replaces all information previously supplied. For additional information, please visit our website [http:// www.21yangjie.com](http://www.21yangjie.com) , or consult your nearest Yangjie's sales office for further assistance.

单击下面可查看定价，库存，交付和生命周期等信息

[>>Yangjie\(扬杰\)](#)