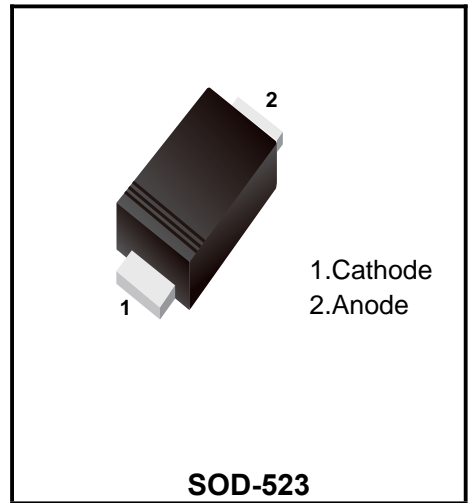


Schottky Barrier Diode

Features

- ◆ Low forward voltage drop
- ◆ Guard ring construction for transient protection
- ◆ Negligible reverse recovery time
- ◆ Low reverse capacitance



MARKING:S4

Absolute Maximum Ratings Ta = 25°C

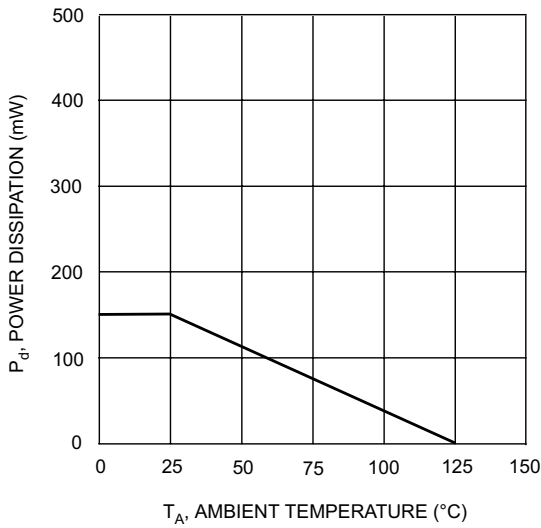
Parameter	Symbol	Rating	Unit
Peak repetitive peak reverse voltage	VRRM	40	V
Working peak	VRWM		
DC blocking voltage	VR		
RMS reverse voltage	VR(RMS)	28	V
Forward continuous current	IFM	350	mA
Non-Repetitive Peak Forward Surge Current @t≤1.0s	IFRM	1.5	A
Power Dissipation	Pd	150	mW
Thermal Resistance, Junction to Ambient Air (Note 1)	RθJA	667	°C/W
Operating and Storage Temperature Range	Tj, TSTG	-65 to +125	°C

Notes: 1. Part mounted on FR-4 board with recommended pad layout

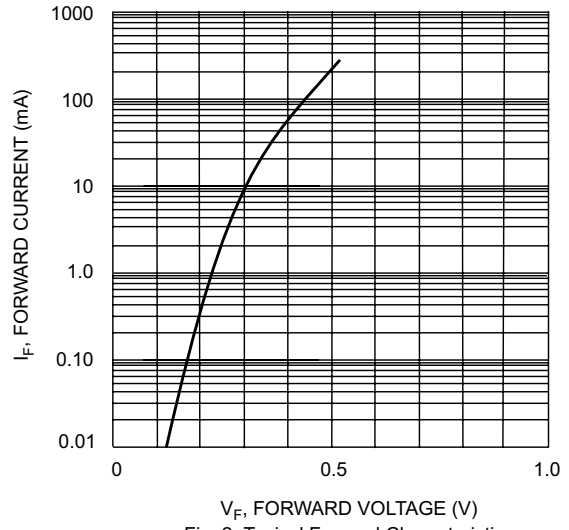
Electrical Characteristics Ta = 25°C

Parameter	Symbol	Testconditions	Min	Typ	Max	Unit
Reverse breakdown voltage	V (BR)R	IR=100 μ A	40			V
Forward Voltage Drop	VFM	IF = 20mA IF = 200mA			0.37 0.60	V
Peak Reverse Current	IRM	VR = 30V			5	μ A
Total Capacitance	CT	VR = 0V, f = 1.0MHz		50		pF
Reverse Recovery Time	trr	IF = IR = 200mA, Irr = 0.1 X IR, RL = 100 Ω		10		ns

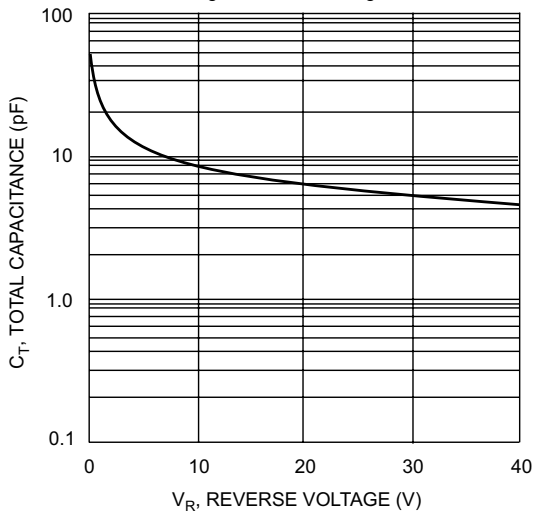
Typical characteristics



T_A, AMBIENT TEMPERATURE (°C)
Fig. 1 Power Derating Curve



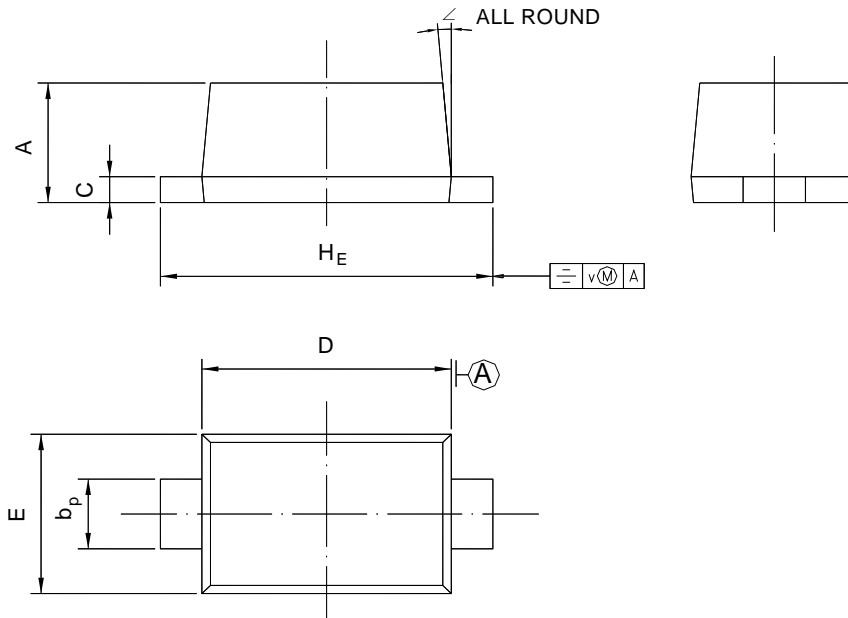
V_F, FORWARD VOLTAGE (V)
Fig. 2 Typical Forward Characteristics



V_R, REVERSE VOLTAGE (V)
Fig. 3 Typ. Total Capacitance vs Reverse Voltage

Package Outline

SOD-523



UNIT	A	b _p	C	D	E	H _E	V	∠
mm	0.70 0.60	0.4 0.3	0.135 0.100	1.25 1.15	0.85 0.75	1.7 1.5	0.1	5°

Summary of Packing Options

Package	Packing Description	Packing Quantity	Industry Standard
SOD-523	Tape/Reel, 7" reel	3000	EIA-481-1

单击下面可查看定价，库存，交付和生命周期等信息

[>>YFW\(佑风微\)](#)