

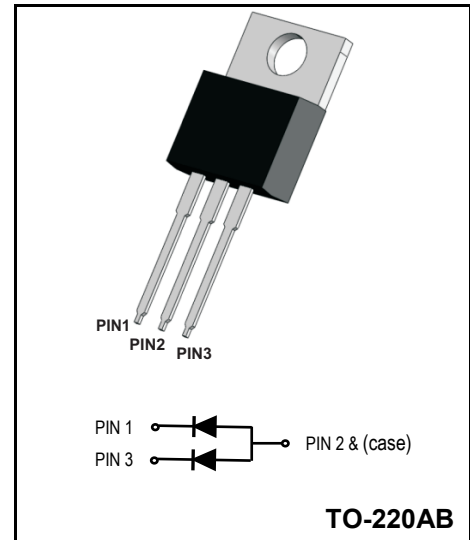
Super Fast Rectifiers

Reverse Voltage - 400V

Forward Current - 20A

FEATURES

- Glass passivated chip junctions
- Super fast recovery time for switching mode application
- High Forward Surge Capability
- Low Reverse Current
- Lead free in compliance with EU RoHS 2011/65/EU directive



MECHANICAL DATA

- Circuit figure: Common Anode
- Leads: Solderable per mil-std-202, Method 208
- Polarity: as marked
- Mounting torque: 5 in-lbs maximum
- Terminals: Puretin plated
- Weight: TO-220AB 1.85 grams

MAXIMUM RATINGS AND ELECTRICAL CHARACTERISTICS (TA=25°C)

| RATINGS | SYMBOL | Value | Units |
|--|-----------------|------------|---------|
| Maximum repetitive reverse voltage | V_{RRM} | 400 | V |
| Maximum RMS voltage | V_{RMS} | 280 | V |
| Maximum DC blocking voltage | V_{DC} | 400 | V |
| Maximum average forward current | I_{AV} | 20 | A |
| Peak forward surge current, 8.3ms single half sine-wave superimposed on rated load | I_{FSM} | 300 | A |
| Typical thermal resistance per diode (Note 1) | $R_{\theta-JC}$ | 2.5 | °C/W |
| Operation Junction Temperature and Storage Temperature | T_J, T_{STG} | -55 ~ +150 | °C |
| CHARACTERISTICS | | | |
| Typical forward voltage per leg at 10A | V_F | 1.65 | V |
| Maximum average reverse current at rated DC blocking voltage | I_R | 5 250 | μA |
| Typical reverse recovery time (Note 2) | T_{RR} | 35 | nS |

Notes: 1. Thermal resistance from junction to case.
2. Test conditions: $I_F=0.5A, I_R=1.0A, I_{RR}=0.25A.$

Ratings And Characteristic Curves

FIG. 1 - TYPICAL FORWARD CURRENT DERATING CURVE

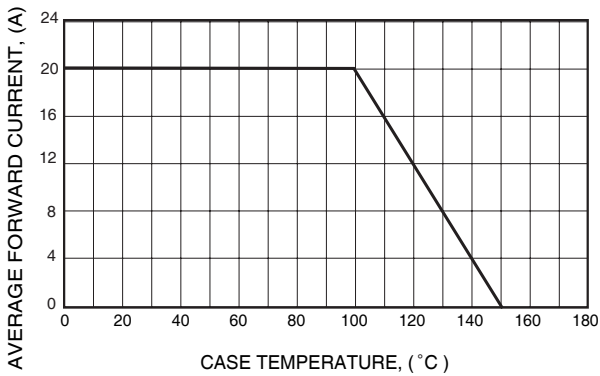


FIG. 3 - MAXIMUM NON-REPETITIVE FORWARD SURGE CURRENT

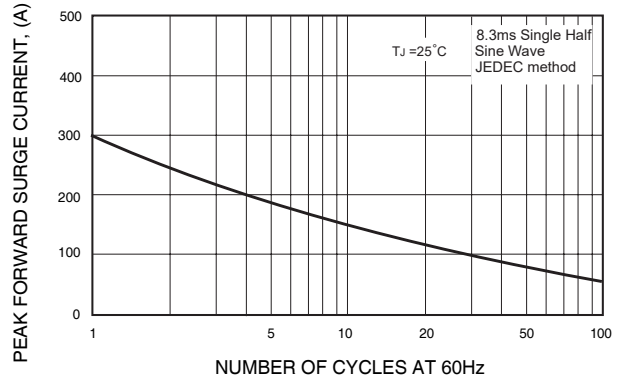


FIG. 4 - TYPICAL REVERSE CHARACTERISTICS

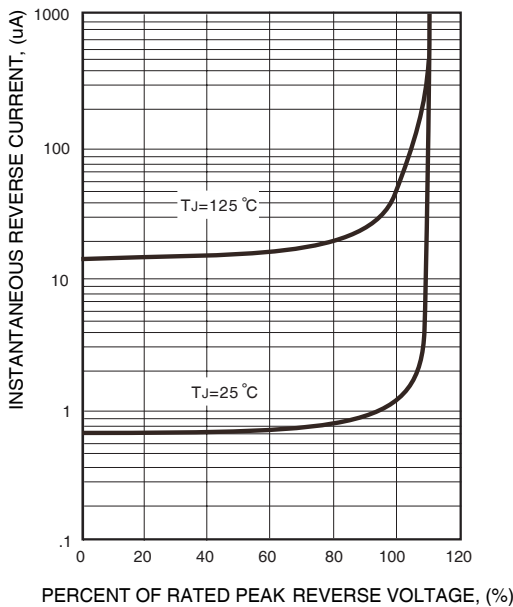


FIG. 2 - TYPICAL INSTANTANEOUS FORWARD CHARACTERISTICS

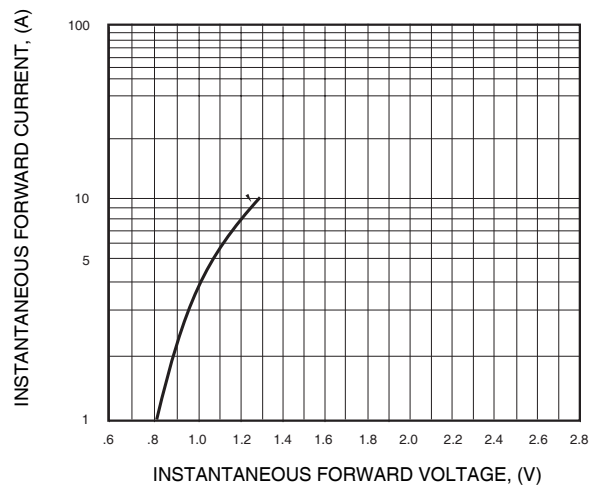
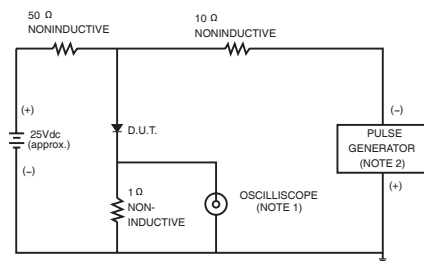
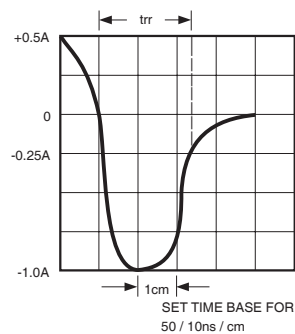


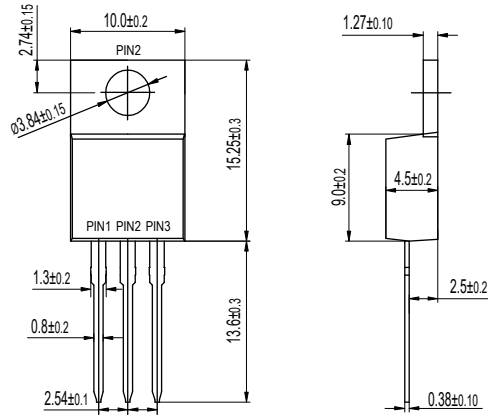
FIG. 6- TEST CIRCUIT DIAGRAM AND REVERSE RECOVERY TIME CHARACTERISTICS



NOTES: 1. Rise Time= 7ns max., Input Impedance= 1 megohm, 22pF.
2. Rise Time= 10ns max., Source Impedance= 50 ohms.



Package Outline Dimensions Millimeters



单击下面可查看定价，库存，交付和生命周期等信息

[>>YFW\(佑风微\)](#)