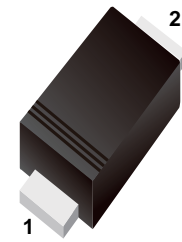


■ **Surface Mount Transient Voltage Suppressor**

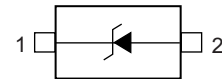
■ **Features**

- Peak Power up to 200 Watts @ 8 x 20 μ s Pulse
- Low Leakage
- Response Time is Typically < 1 ns
- ESD Rating of Class 3 (> 16 kV) per Human Body Model



1.Cathode
2.Anode

■ **Simplified outline(SOD-523)**



■ **Absolute Maximum Ratings Ta = 25°C**

Parameter	Symbol	Rating	Unit
ESD Voltage			
Per Human Body Model		16	KV
Per Machine Model		400	V
Electrostatic discharge			
IEC61000-4-2 Air discharge		30	KV
IEC61000-4-2 ContactAir discharge		30	
Electrostatic discharge			
IEC61000-4-4		40	A
Total Power Dissipation on FR-5 Board*1, @ TA = 25°C	P _D	100	mW
Junction Temperature Range	T _L	260(10s)	°C
Lead Solder Temperature -Maximum	T _J	150	°C
Storage Temperature Range	T _{stg}	-55 to +150	°C

*1 FR-5 = 1.0 X 0.75 X 0.62 in.

■ **Electrical Characteristics (Ta = 25°C unless otherwise noted, V_F = 0.9 V Max. @ I_F = 10 mA for all types)**

Device	V _{RWM} (V)	I _R (μ A) @ V _{RWM}	V _{BR} (V)@ I _T *2	I _T	V _C (V)*1 @I _{PP} =5.0A	V _C (V)*1 @Max I _{PP}	I _{PP} (A) *1	P _{PK} (W)*1	C(pF)
	Max	Max	Min	mA	Typ	Max	Max	Max	Typ
ESD5Z2.5	2.5	6.0	4.0	1.0	6.5	10.9	11.0	120	145
ESD5Z3.3	3.3	0.05	5.0	1.0	8.4	14.1	11.2	158	105
ESD5Z5.0	5.0	0.05	6.2	1.0	11.6	18.6	9.4	174	80
ESD5Z6.0	6.0	0.01	6.8	1.0	12.4	20.5	8.8	181	70
ESD5Z7.0	7.0	0.01	7.5	1.0	13.5	22.7	8.8	200	65

* 1. Surge current waveform per Fig.1

2. V_{BR} is measured with a pulse test current I_T at an ambient temperature of 25°C.

■ **Marking**

TYPE	ESD5Z2.5	ESD5Z3.3	ESD5Z5.0	ESD5Z6.0	ESD5Z7.0
Marking	ZD	ZE	ZF	ZG	ZH

■ Typical Characteristics

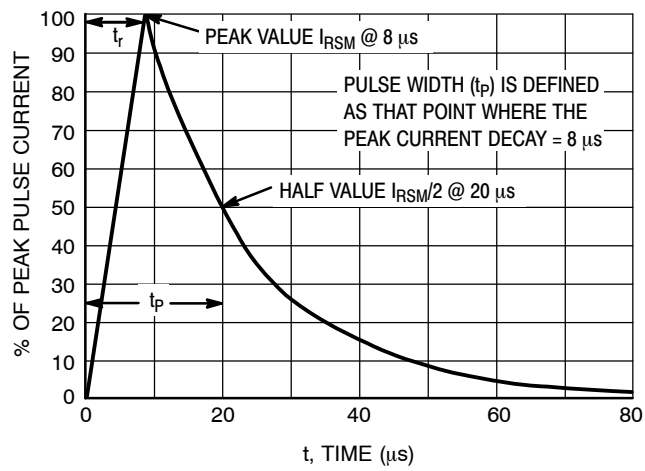
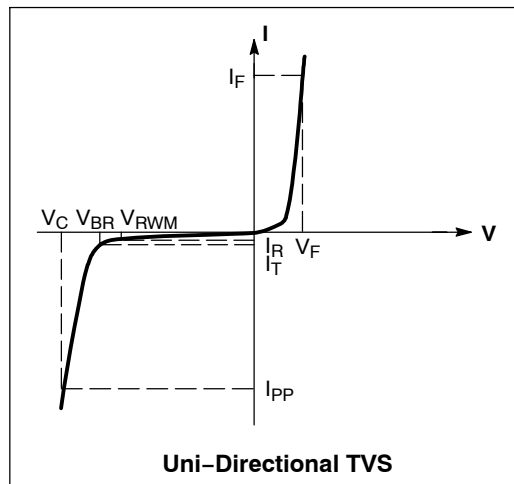
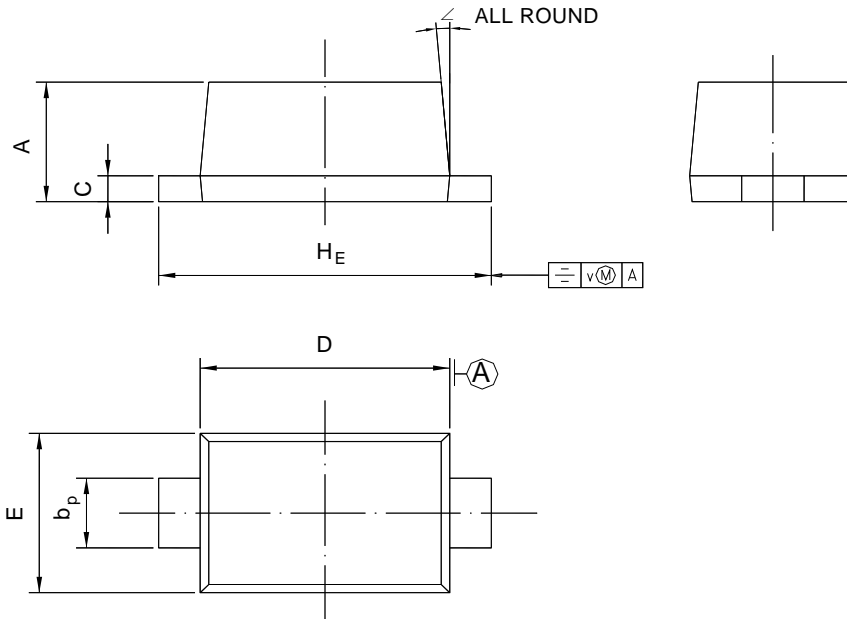


Figure 1. 8 x 20 μs Pulse Waveform

Package Outline SOD-523

Plastic surface mounted package; 2 leads



UNIT	A	b_p	C	D	E	H_E	V	\angle
mm	0.70 0.60	0.4 0.3	0.135 0.100	1.25 1.15	0.85 0.75	1.7 1.5	0.1	5°

Summary of Packing Options

Package	Packing Description	Packing Quantity	Industry Standard
SOD-523	Tape/Reel, 7" reel	3000	EIA-481-1

单击下面可查看定价，库存，交付和生命周期等信息

[>>YFW\(佑风微\)](#)