

Plastic-Encapsulate Diodes

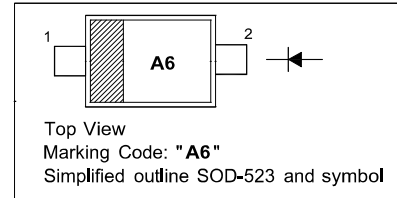
Switching Diode

FEATURES

- High-Speed Switching Applications
- Lead Finish: 100% Matte Sn(Tin)
- Qualified Reflow Temperature: 260°C
- Extremely Small SOD-523 Package

PINNING

PIN	DESCRIPTION
1	Cathode
2	Anode



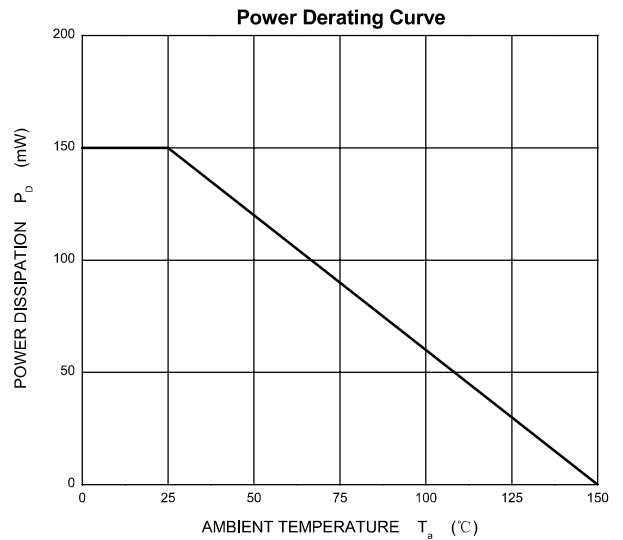
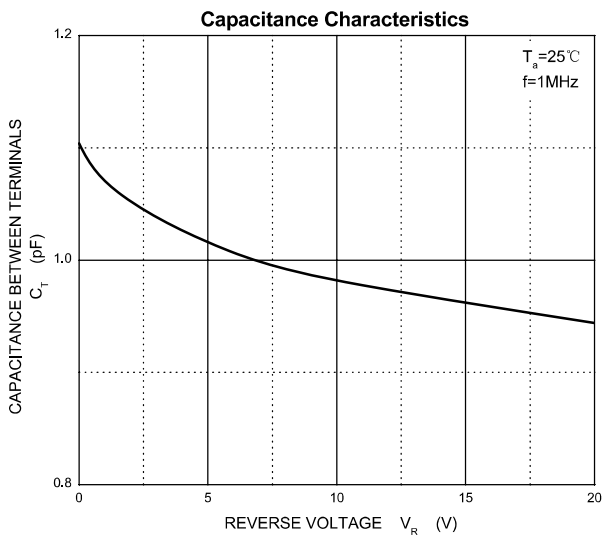
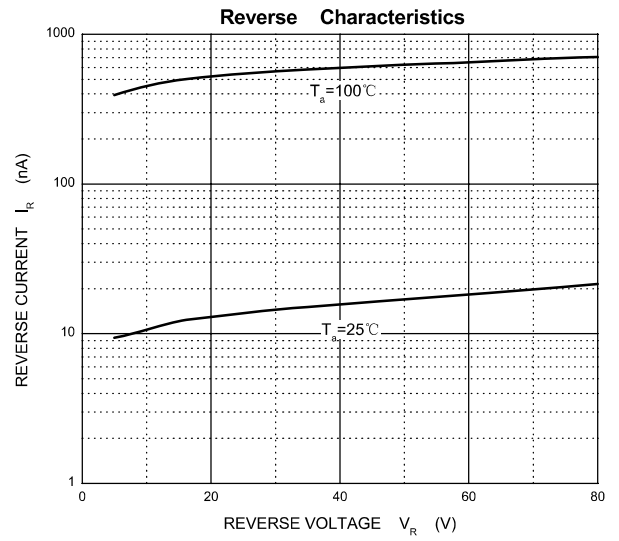
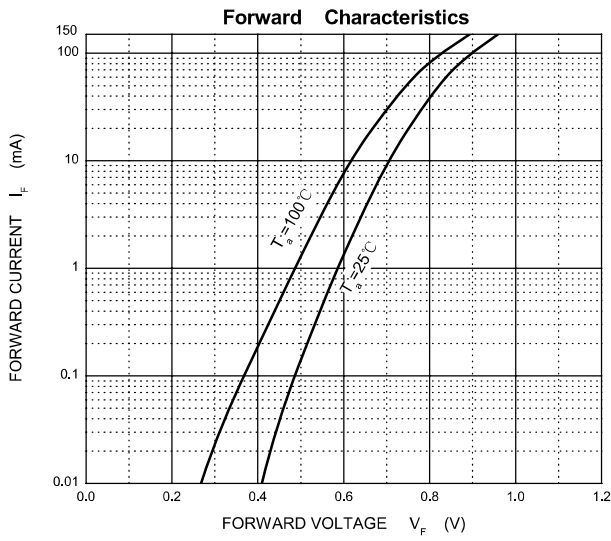
MARKING: A6

Maximum Ratings and Electrical Characteristics, Single Diode @Ta=25°C

Parameter	Symbol	Limit	Unit
DC Reverse Voltage	V_R	75	V
Forward Current	I_F	200	mA
Pak Forward Surge Current	$I_{FM(surge)}$	500	mA
Total Device Dissipation	P_D	150	mW
Thermal Resistance Junction to Ambient	$R_{\theta JA}$	833	°C/W
Junction and Storage Temperature	T_j, T_{stg}	150	°C

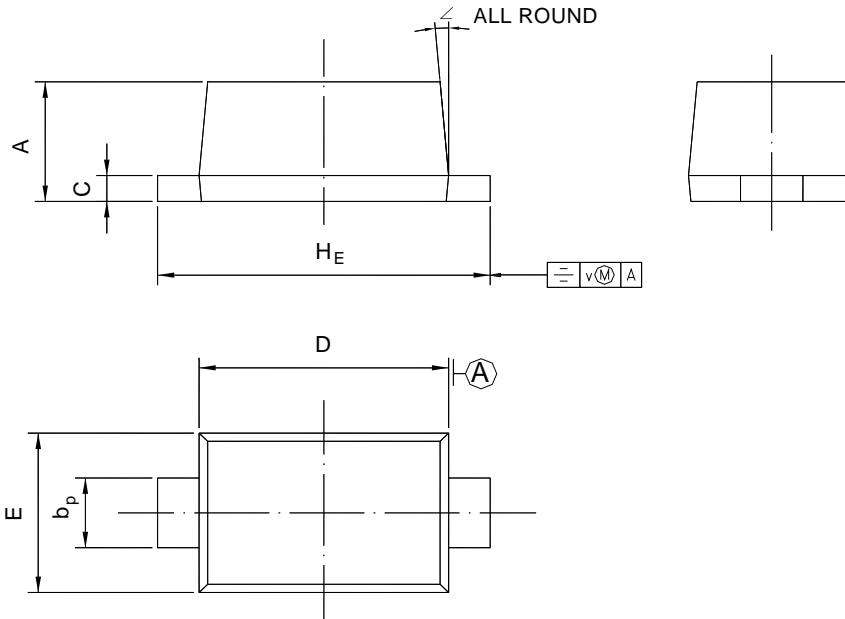
Electrical Ratings @Ta=25°C

Parameter	Symbol	Min	Typ	Max	Unit	Conditions
Reverse breakdown voltage	$V_{(BR)}$	75				$I_R=100\mu A$
Forward voltage	V_{F1}			715	mV	$I_F=1mA$
	V_{F2}			855		$I_F=10mA$
	V_{F3}			1000		$I_F=50mA$
	V_{F4}			1250		$I_F=150mA$
Reverse recovery Time	t_{rr}			6.0	ns	$I_F=I_R=10mA_{dc}, R_L=50\Omega$
Reverse current	I_R			1.0	μA	$V_R=75V$
Forward recovery voltage	V_{FR}			1.75	V	$I_F=10mA, t_r=20ns$
Diode capacitance	C_D			2.0	pF	$V_R=0V, f=1MHz$
Stored charge	Q_S			45	pC	$I_F=10mA, V_R=5.0V, R_L=500\Omega$



Package Outline SOD-523

Plastic surface mounted package; 2 leads



UNIT	A	b_p	C	D	E	H_E	V	\angle
mm	0.70 0.60	0.4 0.3	0.135 0.100	1.25 1.15	0.85 0.75	1.7 1.5	0.1	5°

Summary of Packing Options

Package	Packing Description	Packing Quantity	Industry Standard
SOD-523	Tape/Reel, 7" reel	3000	EIA-481-1

单击下面可查看定价，库存，交付和生命周期等信息

[>>YFW\(佑风微\)](#)