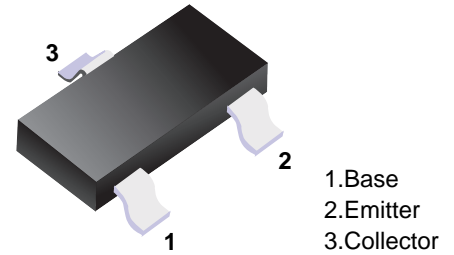


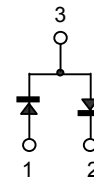
■ Switching Diodes

■ Features

- Ultra high speed switching
- High reliability



■ Simplified outline(SOT-23)



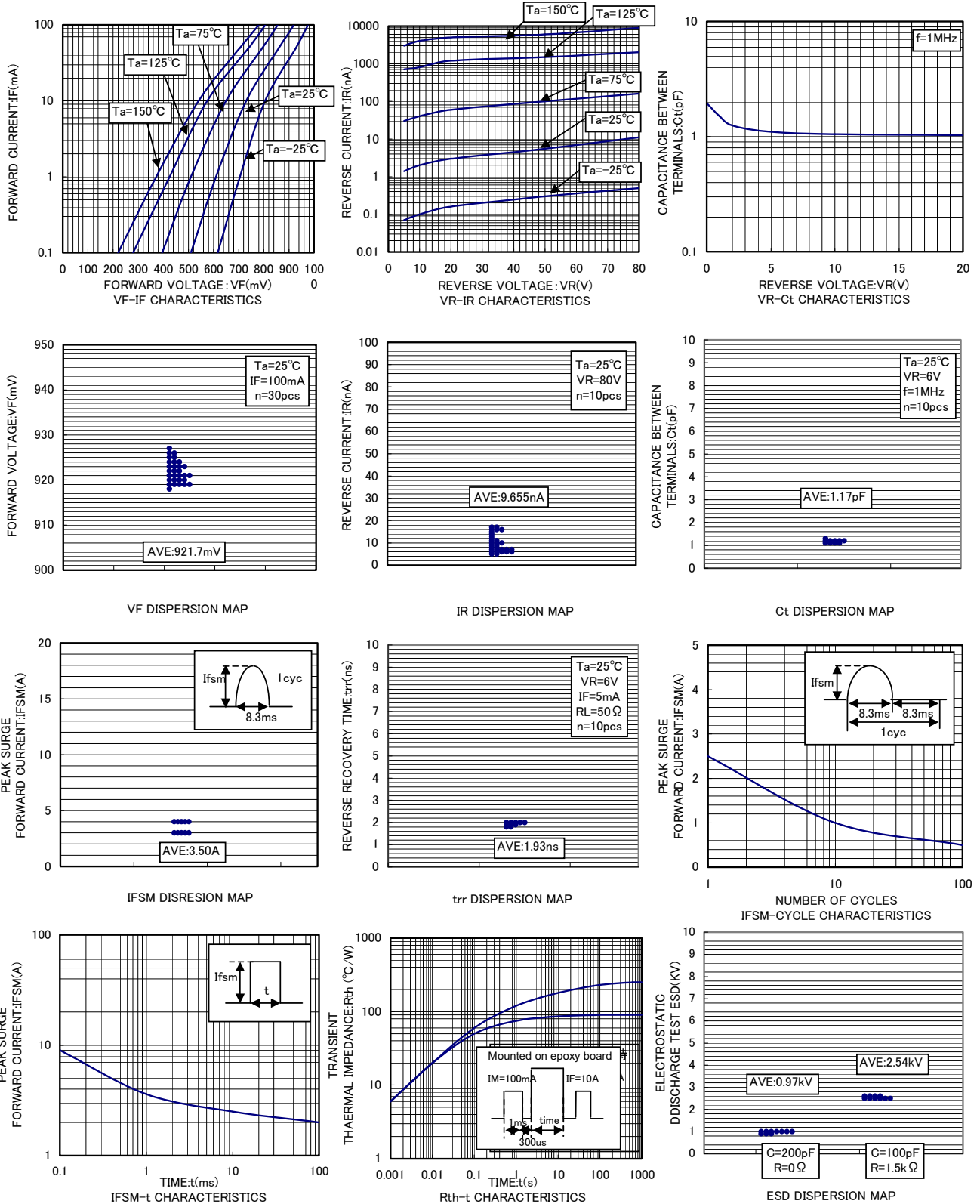
■ Absolute Maximum Ratings Ta = 25°C

| Parameter | Symbol | Rating | Unit |
|--|--------------------|------------|------|
| Reverse Voltage | V _{RM} | 80 | V |
| Reverse Voltage (DC) | V _R | 80 | |
| Average rectified forward current (Single) | I _o | 100 | mA |
| Forward Current (Single) | I _{FM} | 300 | |
| Surge current (t=1us) | I _{surge} | 4 | A |
| Power Dissipation | P _d | 200 | mW |
| Junction Temperature | T _J | 150 | °C |
| Storage Temperature range | T _{stg} | -55 to 150 | |

■ Electrical Characteristics Ta = 25°C

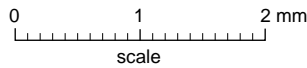
| Parameter | Symbol | Test Conditions | Min | Typ | Max | Unit |
|---------------------------------|-----------------|---|-----|-----|-----|------|
| Reverse breakdown voltage | V _R | I _R = 100 uA | 80 | | | V |
| Forward voltage | V _F | I _F = 100 mA | | | 1.2 | |
| Reverse voltage leakage current | I _R | V _R = 70 V | | | 0.1 | uA |
| Capacitance between terminals | C _t | V _R = 6 V, f= 1 MHz | | | 3.5 | pF |
| Reverse recovery time | t _{rr} | V _R =6V,I _F =5mA, R _L =50Ω | | | 4 | ns |

■ Typical Characteristics



Package Outline

SOT-23



DIMENSIONS (mm are the original dimensions)

| UNIT | A | A ₁ max. | b _p | c | D | E | e | e ₁ | H _E | L _p | Q | v | w |
|------|------------|---------------------|----------------|--------------|------------|------------|-----|----------------|----------------|----------------|--------------|-----|-----|
| mm | 1.1 0.9 | 0.1 | 0.48 0.38 | 0.15 0.09 | 3.0 2.8 | 1.4 1.2 | 1.9 | 0.95 | 2.5 2.1 | 0.45 0.15 | 0.55 0.45 | 0.2 | 0.1 |

Summary of Packing Options

| Package | Packing Description | Packing Quantity | Industry Standard |
|---------|---------------------|------------------|-------------------|
| SOT-23 | Tape/Reel, 7" reel | 3000 | EIA-481-1 |

单击下面可查看定价，库存，交付和生命周期等信息

[>>YFW\(佑风微\)](#)