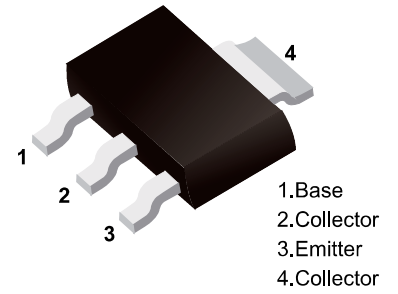


■ NPN Transistors



■ Simplified outline(SOT-223)

■ Features

- For AF driver and output stages
- High collector current
- Low collector-emitter saturation voltage
- Complementary to BCP51,BCP52,BCP53

■ Absolute Maximum Ratings Ta = 25°C

Parameter	Symbol	BCP54	BCP55	BCP56	Unit
Collector - Base Voltage	V <sub>CBO</sub>	45	60	100	V
Collector - Emitter Voltage	V <sub>CEO</sub>	45	60	80	
Emitter - Base Voltage	V <sub>EBO</sub>	5			
Collector Current - Continuous	I <sub>c</sub>	1			A
Collector Power Dissipation	P <sub>c</sub>	1.5			W
Thermal Resistance Junction to Ambient	R <sub>θJA</sub>	83.3			°C/W
Junction Temperature	T <sub>J</sub>	150			°C
Storage Temperature Range	T <sub>stg</sub>	-65 to 150			

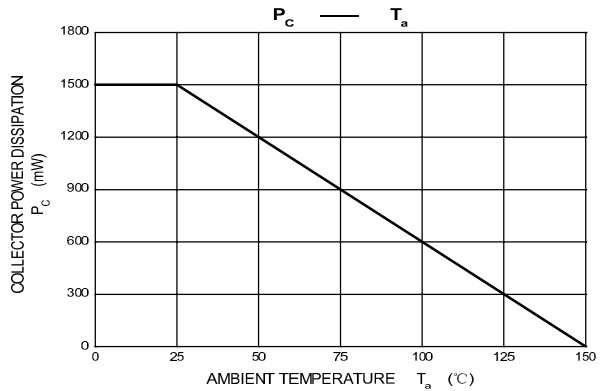
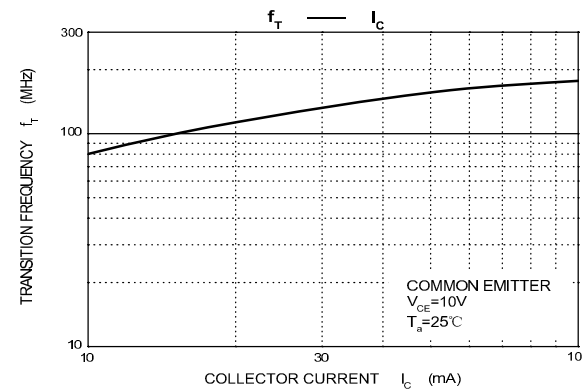
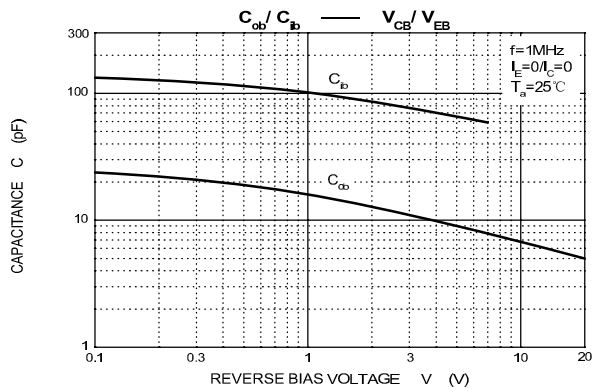
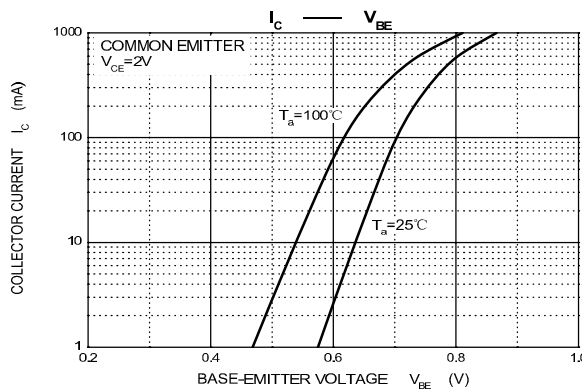
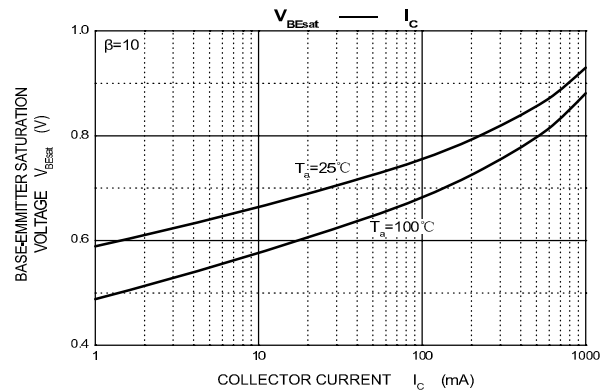
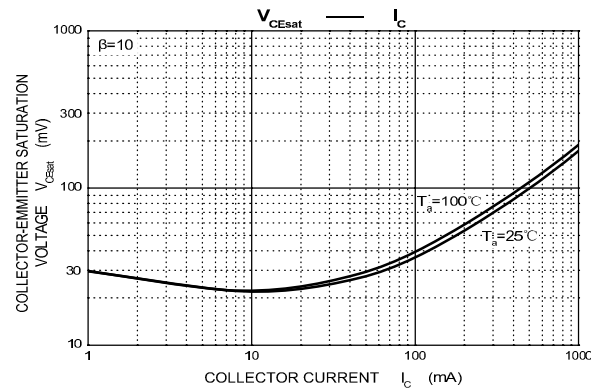
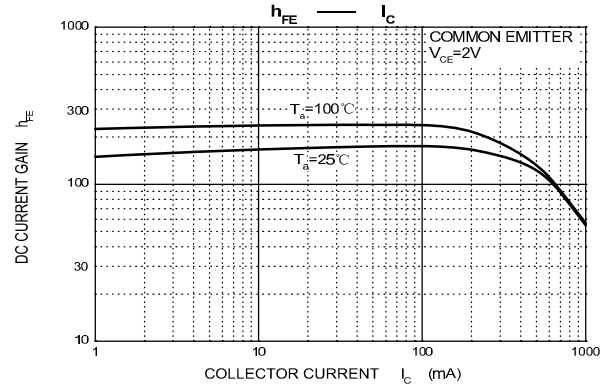
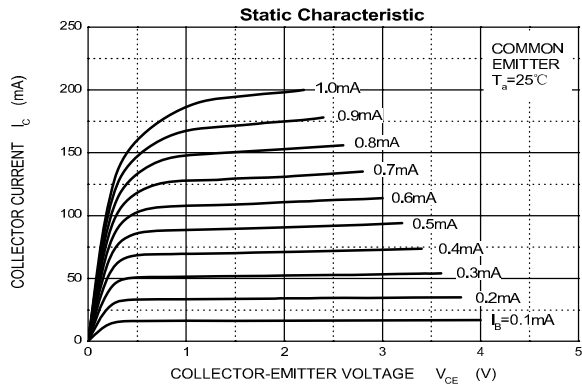
■ Electrical Characteristics Ta = 25°C

Parameter	Symbol	Test Conditions	Min	Typ	Max	Unit	
Collector- base breakdown voltage	BCP54	Ic= 100 μA, IE= 0	45			V	
	BCP55		60				
	BCP56		100				
Collector- emitter breakdown voltage	BCP54	Ic= 10 mA, IB= 0	45			V	
	BCP55		60				
	BCP56		80				
Emitter - base breakdown voltage	VEBO	IE= 100 μ A, IC= 0	5				
Collector-base cut-off current	BCP54	ICBO	V <sub>CB</sub> = 45 V , IE= 0			0.1	uA
	BCP55		V <sub>CB</sub> = 60 V , IE= 0				
	BCP56		V <sub>CB</sub> = 100 V , IE= 0				
Emitter cut-off current	IEBO	VEB= 5V , IC=0			0.1		
Collector-emitter saturation voltage	V <sub>CE(sat)</sub>	Ic=500 mA, IB=50mA			0.5	V	
Base - emitter saturation voltage	V <sub>BE(sat)</sub>	Ic=500 mA, IB=50mA			1.2		
Base-emitter voltage	V <sub>BE</sub>	V <sub>CE</sub> = 2V, Ic= 500mA			1		
DC current gain	hFE(1)	V <sub>CE</sub> = 2V, Ic= 5mA	25				
	hFE(2)	V <sub>CE</sub> = 2V, Ic= 150mA	63		250		
	hFE(3)	V <sub>CE</sub> = 2V, Ic= 500mA	25				
Transition frequency	fr	V <sub>CE</sub> = 10V, Ic= 50mA,f=100MHz	100			MHz	

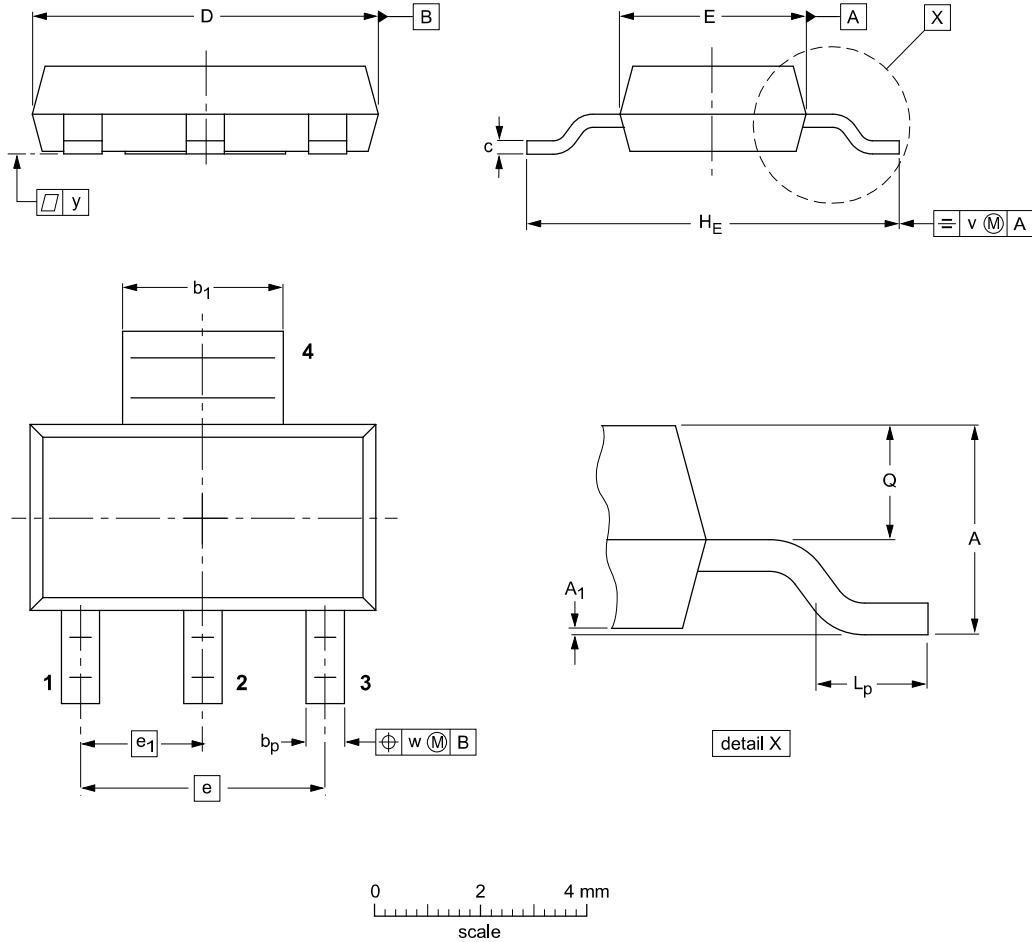
**CLASSIFICATION OF hFE(2)**

Rank	BCP54,BCP55,BCP56	BCP54-10,BCP55-10,BCP56-10	BCP54-16,BCP55-16,BCP56-16
Range	63-250	63-160	100-250
Marking	BCP54,BCP55,BCP56	BCP54-10,BCP55-10,BCP56-10	BCP54-16,BCP55-16,BCP56-16

■ Typical Characteristics



**Package Outline SOT-223**



**DIMENSIONS (mm are the original dimensions)**

UNIT	A	A <sub>1</sub>	b <sub>p</sub>	b <sub>1</sub>	c	D	E	e	e <sub>1</sub>	H <sub>E</sub>	L <sub>p</sub>	Q	v	w	y
mm	1.8 1.5	0.10 0.01	0.80 0.60	3.1 2.9	0.32 0.22	6.7 6.3	3.7 3.3	4.6	2.3	7.3 6.7	1.1 0.7	0.95 0.85	0.2	0.1	0.1

**Summary of Packing Options**

Package	Package Description	Packing Quantity	Industry Standard
SOT-223	Tape/Reel, 7" reel	1000	EIA-481-1

单击下面可查看定价，库存，交付和生命周期等信息

[>>YFW\(佑风微\)](#)