

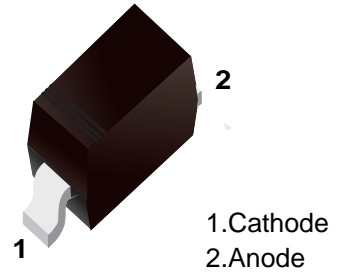
■ Schottky Barrier Diode

■ FEATURES

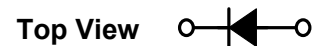
- Extremely fast switching speed.
- Low forward voltage—0.35v(Typ).

■ APPLICATIONS

- High speed switching application.



■ Simplified outline(SOD-523)



■ Marking

Marking	JV
---------	----

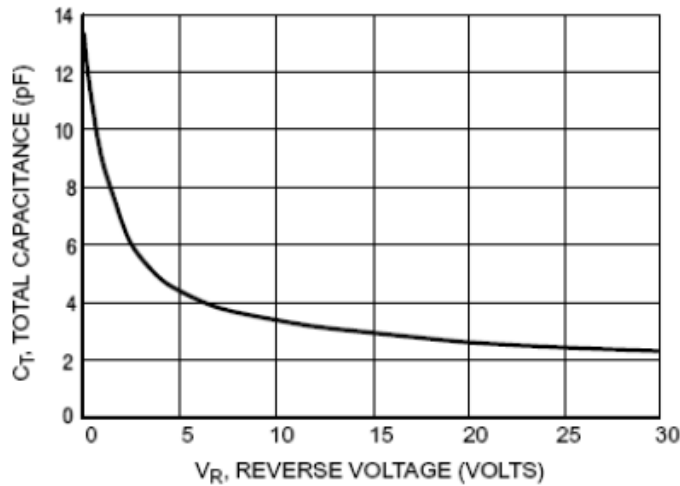
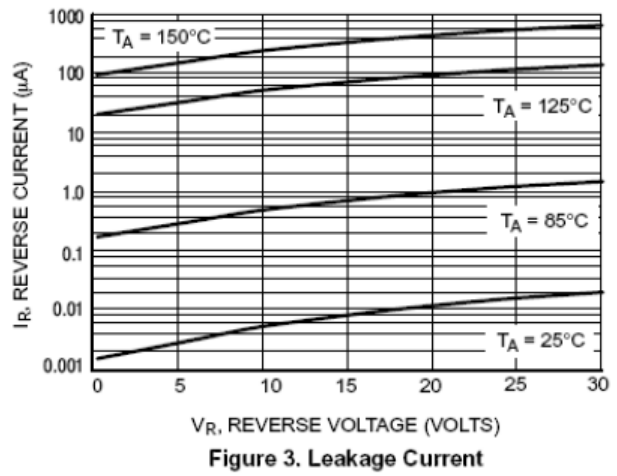
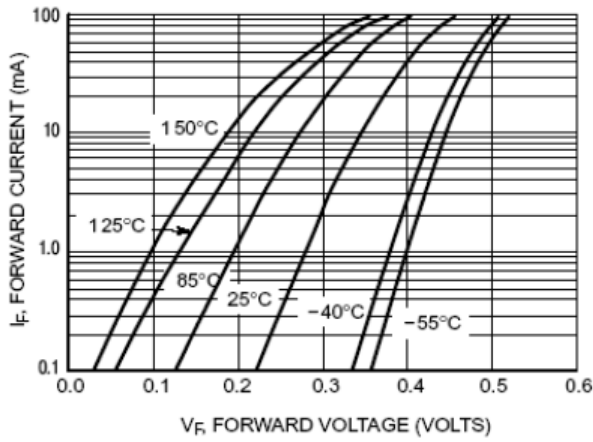
■ MAXIMUM RATING @ Ta=25°C unless otherwise specified

Parameter	Symbol	Limits	Unit
DC Reverse voltage	$V_R$	30	V
Continuous forward current	$I_F$	200	mA
Peak forward surge current	$I_{FSM}$	600	mA
Total power dissipation	$P_{tot}$	200	mW
Total resistance junction to ambient	$R_{\theta JA}$	635	°C/W
Junction temperature	$T_j$	150	°C
Storage temperature	$T_{stg}$	-55-150	°C

■ ELECTRICAL CHARACTERISTICS @ Ta=25°C unless otherwise specified

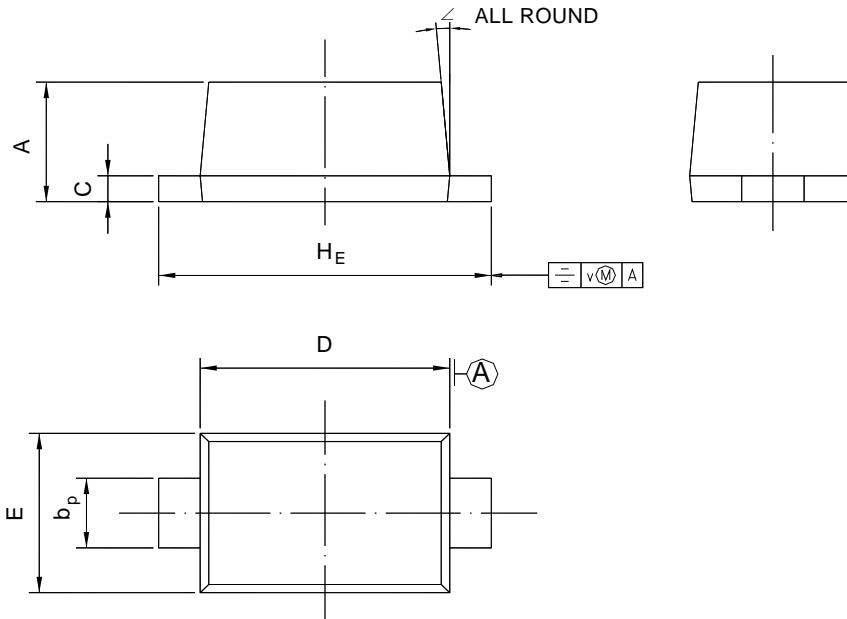
Parameter	Symbol	Min.	Typ.	Max.	Unit	Conditions
Reverse breakdown voltage	$V_{(BR)R}$	30			V	$I_R=100\mu A$
Forward voltage	$V_F$		0.22 0.41 0.52 0.29 0.35	0.24 0.5 0.8 0.32 0.40	V	$I_F=0.1mA$ $I_F=30mA$ $I_F=100mA$ $I_F=1.0mA$ $I_F=10mA$
Reverse current	$I_R$		0.5	2.0	$\mu A$	$V_R=25V$
Diode capacitance	$C_d$		7.6	10	pF	$V_R=1V, f=1MHz$
Reverse recovery time	$t_{rr}$			5	ns	$I_F=I_R=10mA$

TYPICAL CHARACTERISTICS @ Ta=25°C unless otherwise specified



**Package Outline SOD-523**

Plastic surface mounted package; 2 leads



UNIT	A	$b_p$	C	D	E	$H_E$	V	$\angle$
mm	0.70	0.4	0.135	1.25	0.85	1.7	0.1	5°
	0.60	0.3	0.100	1.15	0.75	1.5		

**Summary of Packing Options**

Package	Packing Description	Packing Quantity	Industry Standard
SOD-523	Tape/Reel, 7" reel	3000	EIA-481-1

单击下面可查看定价，库存，交付和生命周期等信息

[>>YFW\(佑风微\)](#)