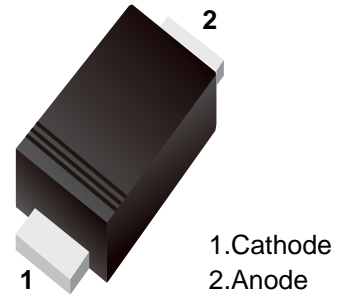


■ Schottky Barrier Diode

■ Features

- Low Forward Voltage Drop
- Flat Lead SOD-523 Small Outline Plastic Package
- Extremely Small SOD-523 Package
- Surface Device Type Mounting
- RoHS Compliant
- Green EMC
- Matte Tin(Sn) Lead Finish



■ Simplified outline(SOD-523)



■ Marking

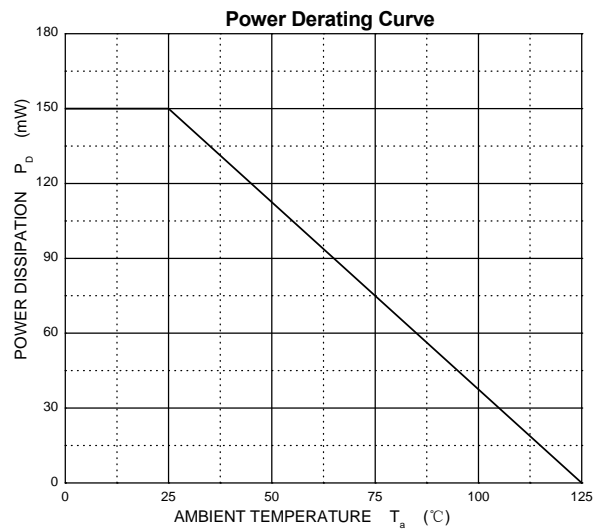
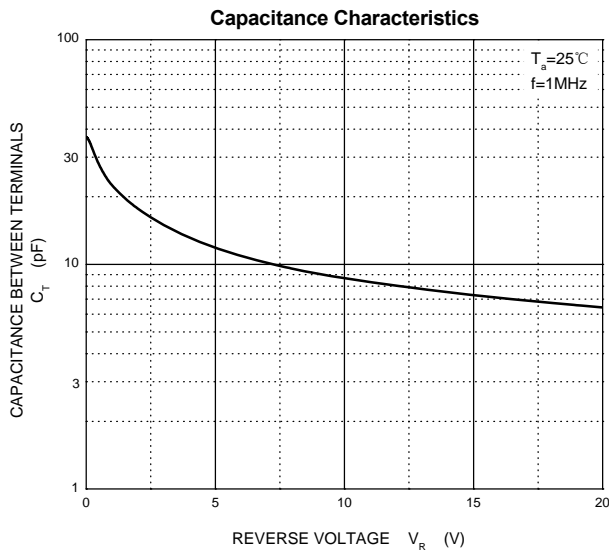
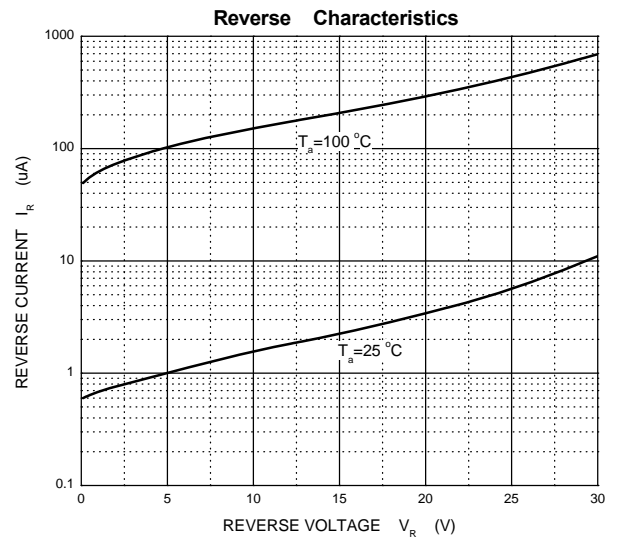
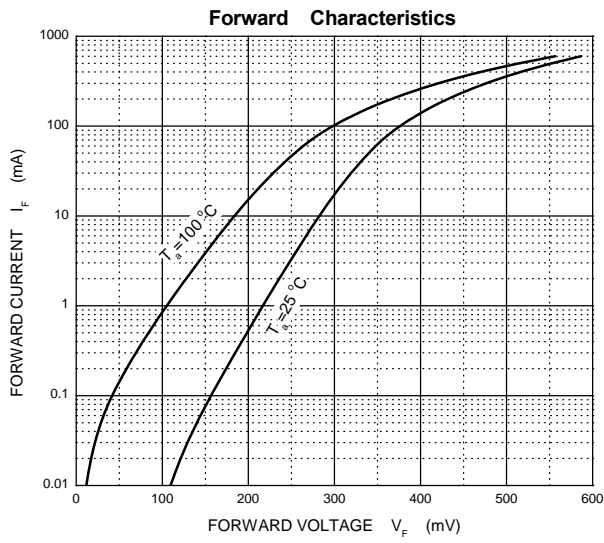
Marking	C
---------	---

■ Absolute Maximum Ratings Ta = 25°C

Parameter	Symbol	Rating	Unit
Peak Reverse Voltage	V _{RM}	30	V
Average Rectified Output Current	I _{F(AV)}	200	mA
Peak Forward Surge Current (At 8.3ms single half sine-wave)	I _{FSM}	1	A
Power Dissipation	P _D	200	mW
Junction Temperature	T _J	125	°C
Storage Temperature Range	T _{stg}	-55 to +125	

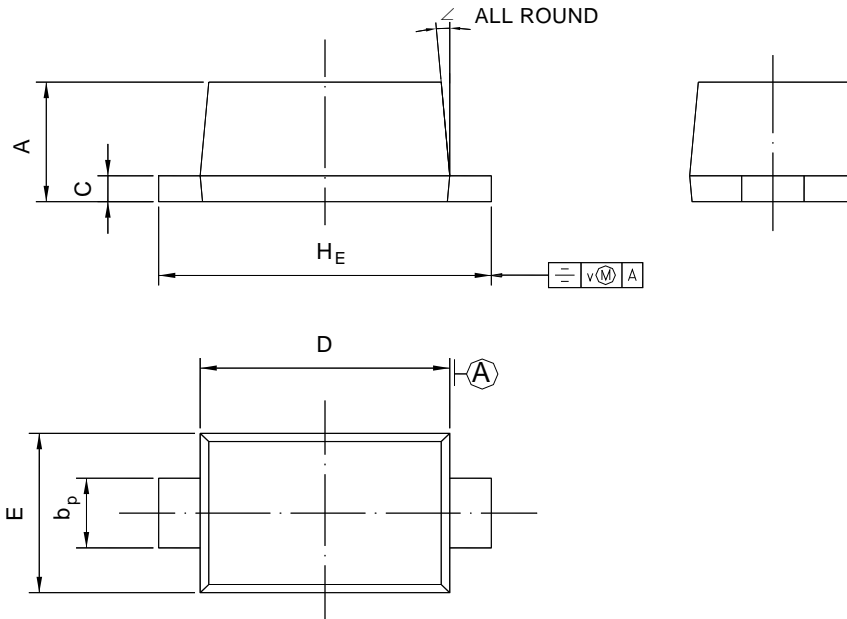
■ Electrical Characteristics Ta = 25°C

Parameter	Symbol	Test Conditions	Min	Typ	Max	Unit
Reverse breakdown voltage	BV	I _R = 500uA	30			V
Forward voltage	V _F	I _F =200mA			0.5	
Reverse voltage leakage current	I _R	V _R =10 V			30	uA



Package Outline SOD-523

Plastic surface mounted package; 2 leads



UNIT	A	b _p	C	D	E	H _E	V	∠
mm	0.70	0.4	0.135	1.25	0.85	1.7	0.1	5°
	0.60	0.3	0.100	1.15	0.75	1.5		

Summary of Packing Options

Package	Packing Description	Packing Quantity	Industry Standard
SOD-523	Tape/Reel, 7" reel	3000	EIA-481-1

单击下面可查看定价，库存，交付和生命周期等信息

[>>YFW\(佑风微\)](#)