

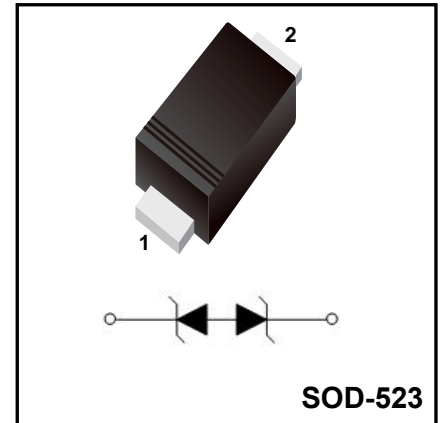
Surface Mount Transient Voltage Suppressor

FEATURES:

- ◆Protects one bi-directional I/O line
- ◆Low clamping voltage
- ◆Low operating voltage: 3.3V
- ◆ROHS compliant

MAIN APPLICATIONS

- ◆Cell Phone Handsets and Accessories
- ◆Personal Digital Assistants (PDA's)
- ◆Notebooks,Desktops, and Servers
- ◆Portable Instrumentation
- ◆Pagers
- ◆Microprocessor based equipment



PROTECTION SOLUTION TO MEET

- ◆IEC61000-4-2 (ESD)+30kv (air), ±30kV (contact)

Product Specification Classification

Part Number	Package	Marking	Pack
ESD5Z3.3C	SOD-523	B	3000PCS/Tape

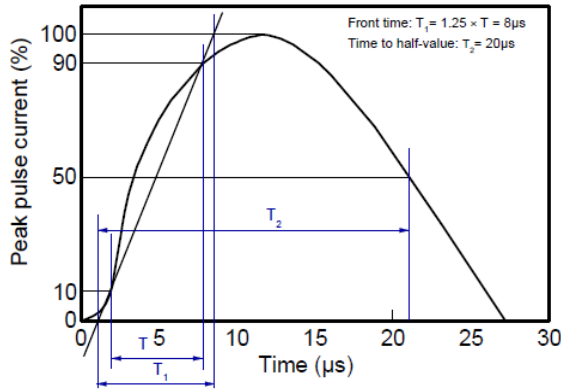
Absolute Maximum Ratings (Tamb=25°C unless otherwise specified)

Parameter	Symbol	Rating	Unit
Peak Pulse Power (8/20us)	P _{PK}	96	W
Peak Pulse Current (8/20us)	I _{PP}	8	A
Operating Temperature	T _{OP}	-55 ~ +150	°C
Storage Temperature	T _{STG}	-55 ~ +150	°C

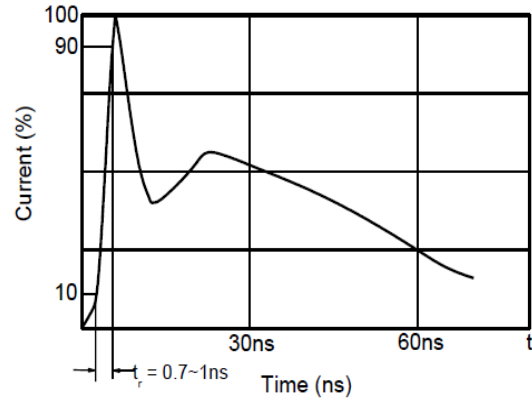
Electrical Characteristics (TA=25°C unless otherwise specified)

Parameter	Symbol	Test Conditions	Criterion			Unit
			Min	Typ	Max	
Reverse Working Voltage	V _{RWM}				3.3	V
Reverse Breakdown Voltage	V _{BR}	I _t =1mA	3.5		5	V
Reverse Leakage Current	I _R	V _{RWM} =±3.3V			0.1	uA
Clamping Voltage	V _C	I _{pp} =1A, tp=8/20us			7	V
Clamping Voltage	V _C	I _{pp} =8A, tp=8/20us			12	V
Junction Capacitance	C _j	V _R =0V, f=1MHz			20	pF

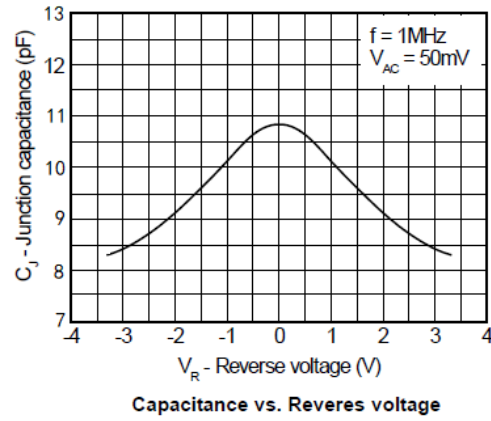
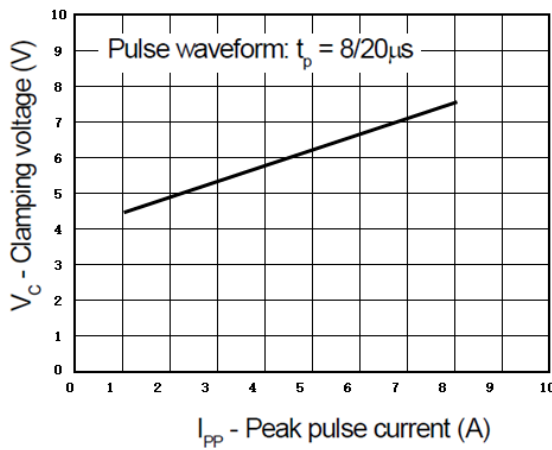
Typical Characteristics



8/20μs waveform per IEC61000-4-5



Contact discharge current waveform per IEC61000-4-2



Capacitance vs. Reverse voltage

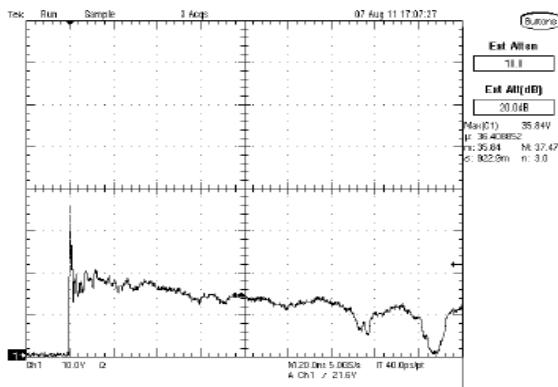


Fig1. ESD Clamping Voltage Screenshot Positive 8 kV Contact per IEC61000-4-2

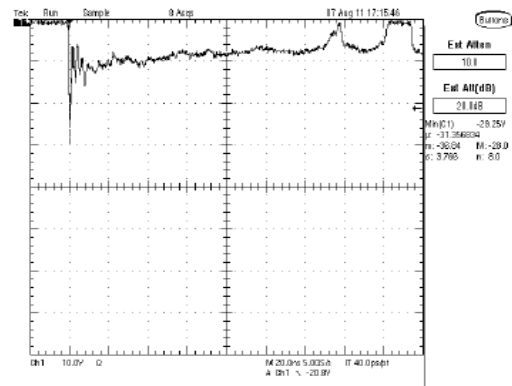
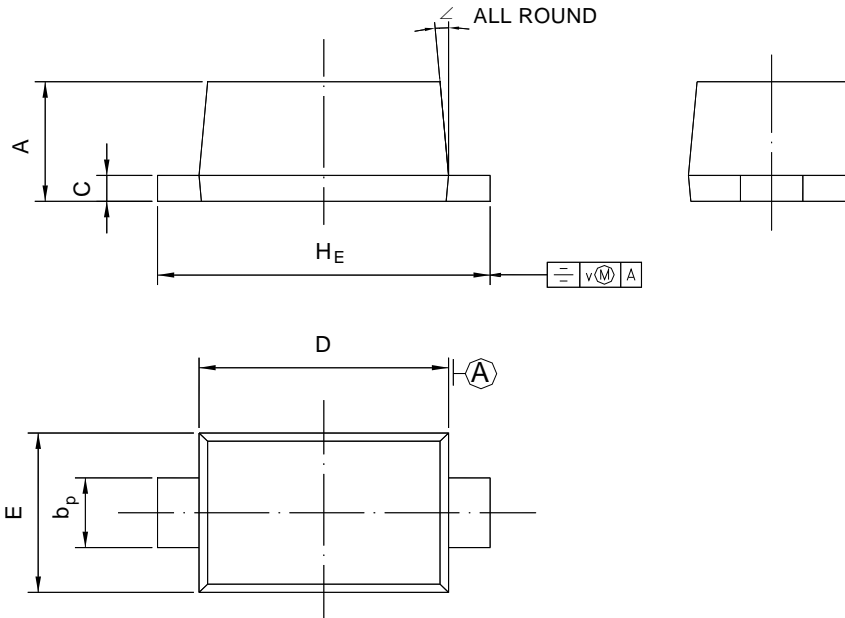


Fig2. ESD Clamping Voltage Screenshot Negative 8 kV Contact per IEC61000-4-2

Package Outline

SOD-523



UNIT	A	b _p	C	D	E	H _E	V	∠
mm	0.70 0.60	0.4 0.3	0.135 0.100	1.25 1.15	0.85 0.75	1.7 1.5	0.1	5°

单击下面可查看定价，库存，交付和生命周期等信息

[>>YFW\(佑风微\)](#)