

**Super Fast Rectifiers**

**Reverse Voltage - 400 V**

**Forward Current - 30 A**

**FEATURES**

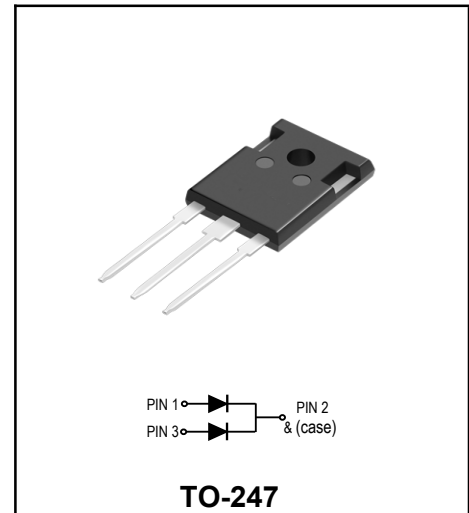
- ◆ Glass passivated chip junctions
- ◆ High Speed recovery time for switching
- ◆ mode application
- ◆ High Forward Surge Capability
- ◆ Low Reverse Current
- ◆ Lead free in compliance with EU RoHS 2011/65/EU directive

**MECHANICAL DATA**

- ◆ Leads: Solderable per mil-std-202, Method 208
- ◆ Polarity: as marked
- ◆ Mounting torque: 5 in-lbs maximum
- ◆ Terminals: Puretin plated
- ◆ Weight: 5.85 grams

**Primary Characteristic**

<b>I<sub>F</sub></b>	<b>2*15A</b>
<b>V<sub>RRM</sub></b>	<b>400V</b>
<b>I<sub>FSM</sub></b>	<b>400A</b>
<b>V<sub>F</sub></b>	<b>1.35V</b>
<b>T<sub>J</sub> Max</b>	<b>150°C</b>



**Maximum Ratings (Per Leg) at Ta=25°C unless otherwise specified**

Parameter	Symbols	Value	Units
Maximum Repetitive Peak Reverse Voltage	<b>V<sub>RRM</sub></b>	400	<b>V</b>
Maximum RMS voltage	<b>V<sub>RMS</sub></b>	280	<b>V</b>
Maximum DC Blocking Voltage	<b>V<sub>DC</sub></b>	400	<b>V</b>
Maximum Average Forward Rectified Current	<b>I<sub>F</sub></b>	per device	30
		per diode	15
Peak Forward Surge Current, 8.3ms Single Half Sine-wave	<b>I<sub>FSM</sub></b>	400	<b>A</b>
Operating Temperature Range	<b>T<sub>J</sub></b>	-50 ~ +150	<b>°C</b>
Storage Temperature Range	<b>T<sub>STG</sub></b>	-50 ~ +150	<b>°C</b>
Typical Thermal Resistance (Note2)	<b>R<sub>θJC</sub></b>	1.5	<b>°C/W</b>

**Electrical Characteristics (Per Leg) unless otherwise specified**

Characteristics	Symbols	Value	Units
Typical Forward Voltage at IF=15A	<b>V<sub>F</sub></b>	1.35	<b>V</b>
Max. DC Reverse Current at Rated DC Blocking Voltage	<b>I<sub>R</sub></b>	T <sub>A</sub> =25°C	5
		T <sub>A</sub> =125°C	250
Maximum Reverse Recovery Time at IF=0.5A, IR=1A, IRR=0.25A	<b>T<sub>RR</sub></b>	35	<b>nS</b>

**NOTES:**

1. Reverse Recovery Test Conditions: IF=0.5A, IR=1A, IRR=0.25A.
2. Thermal resistance from junction to case.

FIG. 1 - TYPICAL FORWARD CURRENT DERATING CURVE

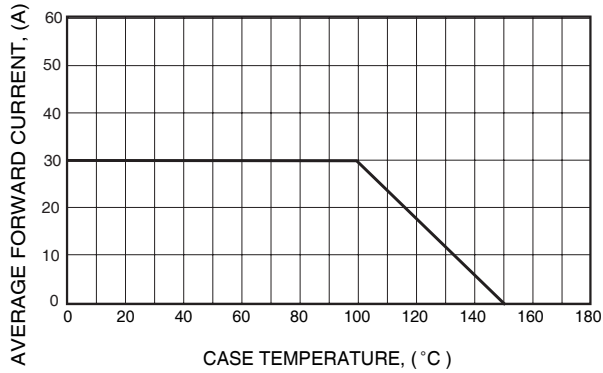


FIG. 2 - MAXIMUM NON-REPETITIVE FORWARD SURGE CURRENT

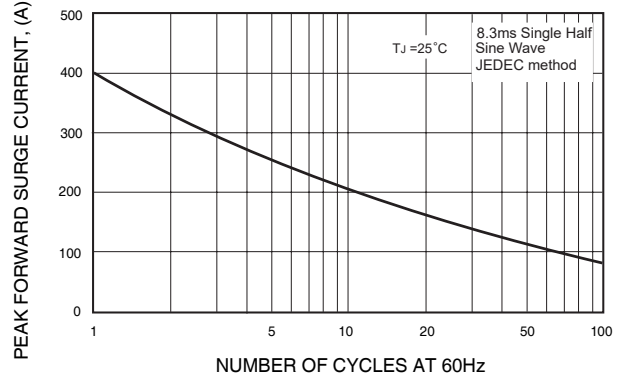


FIG. 3 - TYPICAL REVERSE CHARACTERISTICS

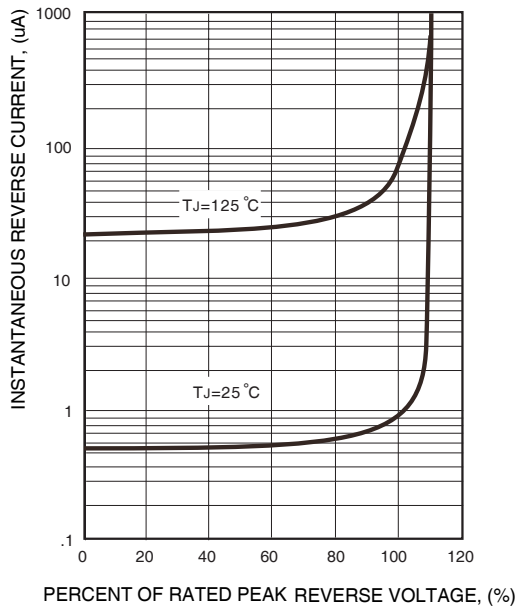
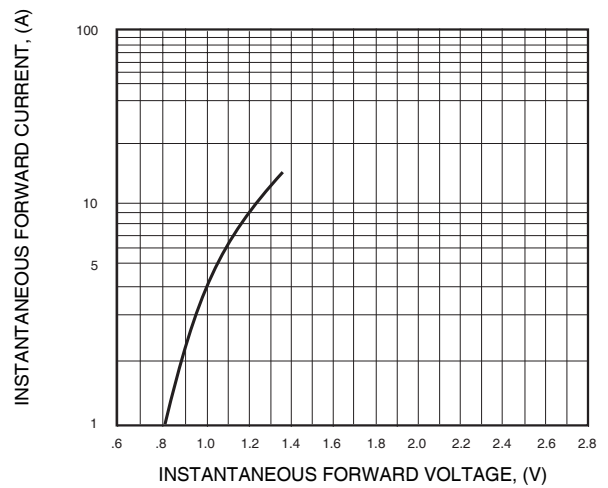
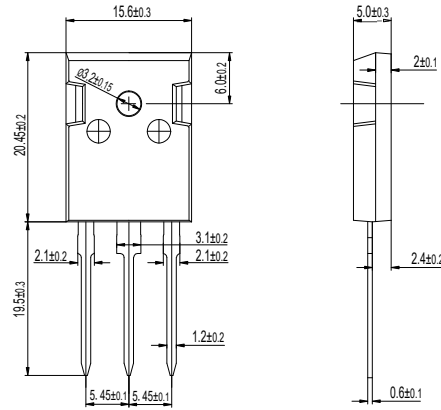


FIG. 4 - TYPICAL INSTANTANEOUS FORWARD CHARACTERISTICS



**Package Outline Dimensions millimeters**

**TO-247**



**Ordering information**

Part Number	Package	Marking	Base Quantity	Delivery mode
MUR3040SPT	TO-247	YFW MUR3040SPT XXXXX	30 pcs / tube	600pcs/box 2400pcs/carton

单击下面可查看定价，库存，交付和生命周期等信息

[>>YFW\(佑风微\)](#)