

78M09

FEATURES:

Maximum Output current ICM: 0.5A

Output voltage VO: 9V

Continuous total dissipation

PD: 1.25 W(Ta=25°C)

TO-252-2L

1.IN

2.GND

3.OUT



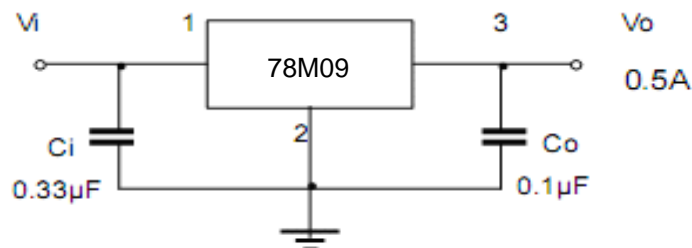
ABSOLUTE MAXIMUM RATINGS(Operating temperature unless otherwise specified)

Symbol (符号)	Parameter (参数名称)	Value (额定值)	Units (单位)
Vi	Input Voltage	35	V
TOPR	Operating junction Temperature Range	0~+125	°C
TstG	Storage Temperature Range	-55~+150	°C

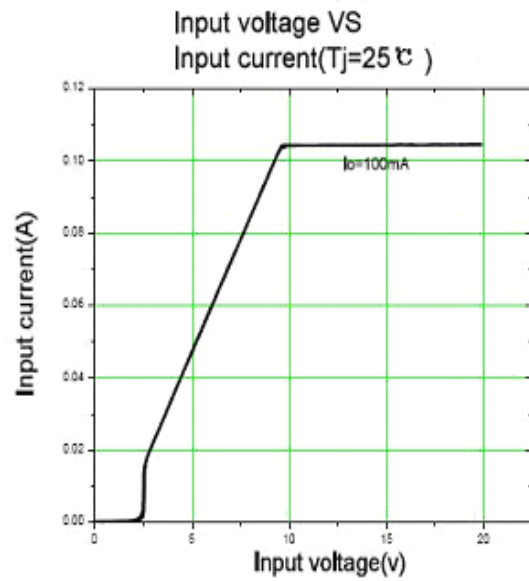
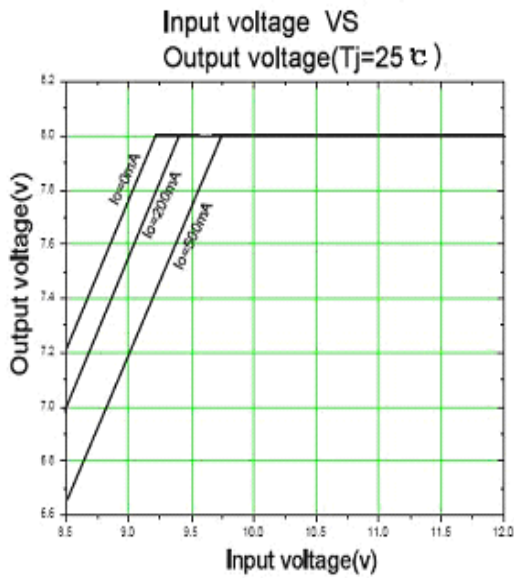
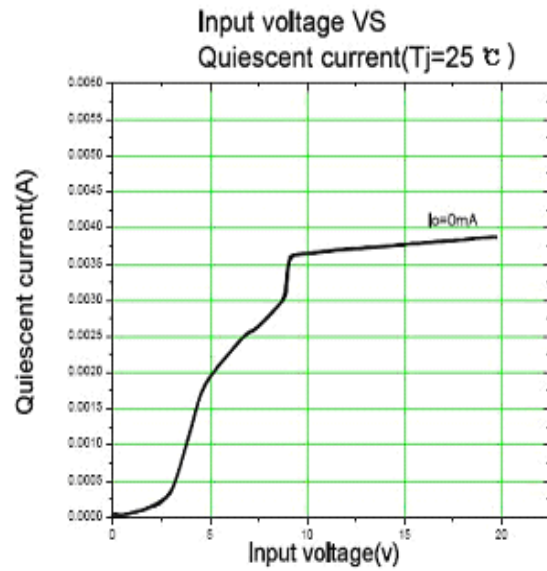
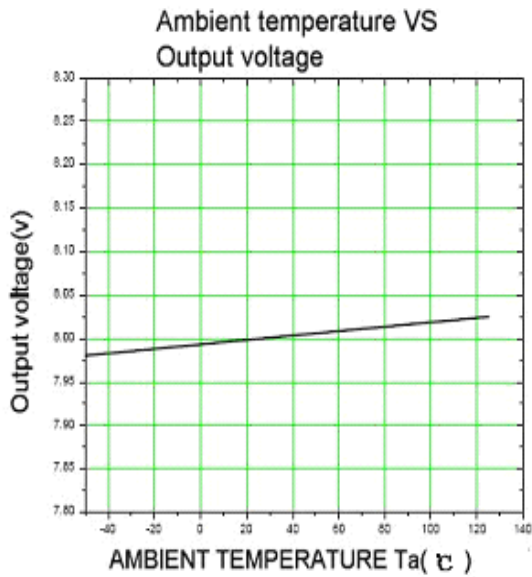
ELECTRICAL CHARACTERISTICS (Tamb=25°C unless otherwise specified)

Parameter	Symbol	Test conditions	MIN	TYP	MAX	UNIT
Output voltage	Vo	25°C	8.65	9	9.35	V
		11.5V ≤ Vi ≤ 24V, Io=5mA~350mA Po ≤ 15W	0-125°C	8.55	9	9.45
Load Regulation	ΔVo	Io=1mA~500mA	25°C	20	180	mV
		Io=5mA~200mA	25°C	10	90	mV
Line regulation	ΔVo	11.5V ≤ Vi ≤ 26V Io=200mA		6	100	mV
		12V ≤ Vi ≤ 26V Io=200mA	25°C	2	50	mV
Quiescent Current	Iq	25°C		4.6	6	mA
Quiescent Current Change	ΔIq	11.5V ≤ Vi ≤ 26V Io=200mA	0-125°C		0.8	mA
	ΔIq	5mA ≤ Io ≤ 350mA	0-125°C		0.5	mA
Output Noise Voltage	VN	10Hz ≤ f ≤ 100KHz	25°C	60		uV
Ripple Rejection	RR	13V ≤ Vi ≤ 23V, f=120Hz Io=300mA	0-125°C	56	80	dB
Dropout Voltage	Vd	Io=350mA	25°C	2		V

TYPICAL APPLICATION



Typical Characteristics



单击下面可查看定价，库存，交付和生命周期等信息

[>>YONGYUTAI\(永裕泰\)](#)