



# 20F20C3/20F20HF3

## 主要参数 MAIN CHARACTERISTICS

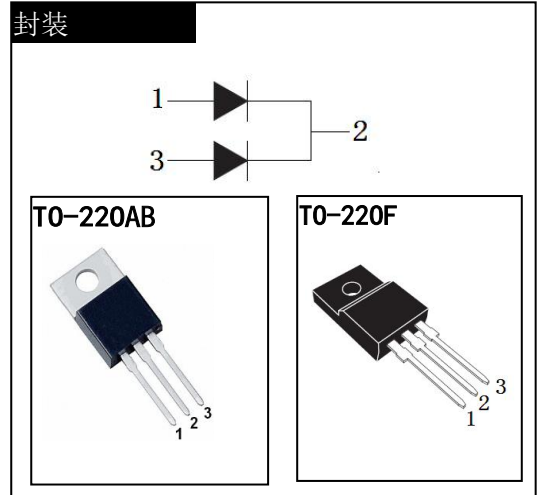
$I_{F(AV)}$	10x2 A
$V_R$	200 V
$T_j(max)$	150°C
$V_F (typ)$	0.95V
$t_{rr} (typ)$	22ns

### 用途

- 开关电源
- 通用电路

### APPLICATIONS

- Switch power supply
- General circuits



### 产品特性

- 共阴结构
- 低功耗，高效率
- 高可靠性
- 环保 (RoHS) 产品

### FEATURES

- Common cathode structure
- Low power loss, high efficiency
- High reliability
- RoHS product

订货型号 Order codes				印 记 Marking	封 装 Package
有卤-条管 Halogen-Tube	无卤-条管 Halogen Free-Tube	有卤-编带 Halogen-Reel	无卤-编带 Halogen Free-Reel		
20F20C3-C-B	20F20C3-C-BR	N/A	N/A	20F20C3	TO-220AB
20F20HF3-FA-B	20F20HF3-FA-BR	N/A	N/A	20F20HF3	TO-220F



**绝对最大额定值 ABSOLUTE RATINGS (Tc=25°C)**

项 目 Parameter		符 号 Symbol	数 值 Value	单 位 Unit
最大反向重复峰值电压 Repetitive peak reverse voltage		V <sub>RRM</sub>	200	V
正向平均整流电流 Average forward current	T <sub>C</sub> =100°C (TO-220AB) 整个器件 per device	I <sub>F(AV)</sub>	20	A
	T <sub>C</sub> =100°C (TO-220F) 单 侧 per diode		10	
峰值单脉冲浪涌电流 Peak one Cycle Surge Forward Current(Non-Repetitive) t=10ms		I <sub>FSM</sub>	100	A
结温 Junction Temperature		T <sub>J</sub>	-50~+150	°C
储存温度 Storage temperature range		T <sub>STG</sub>	-50~+150	°C

**电特性 ELECTRICAL CHARACTERISTICS (Tc=25°C unless otherwise specified)**

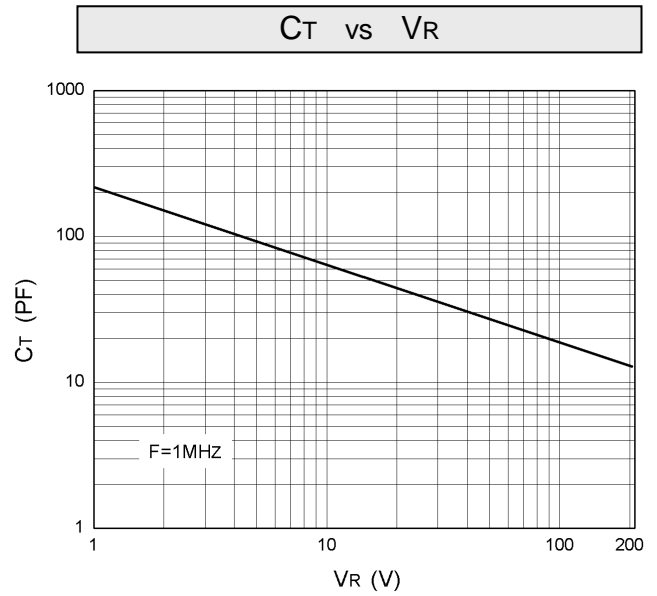
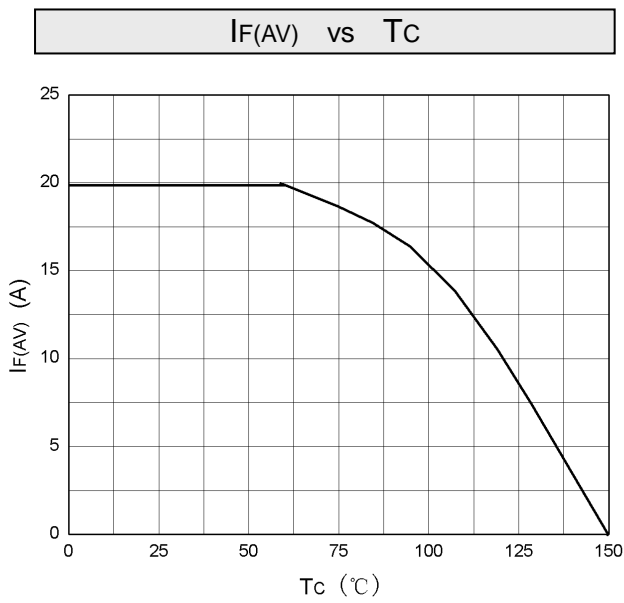
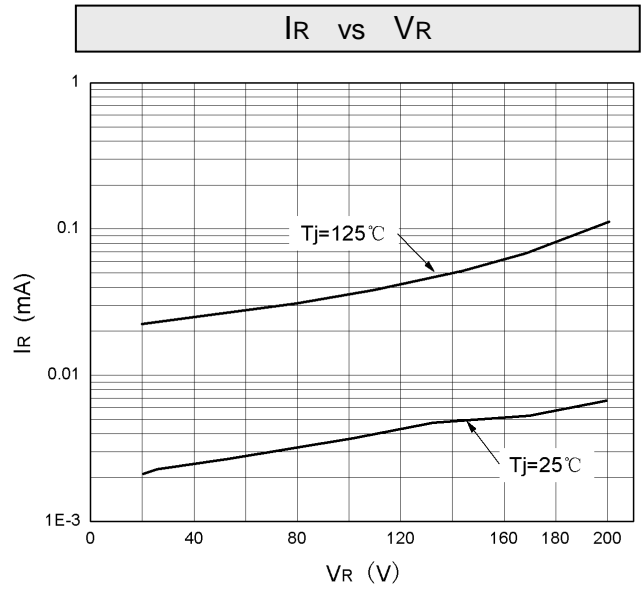
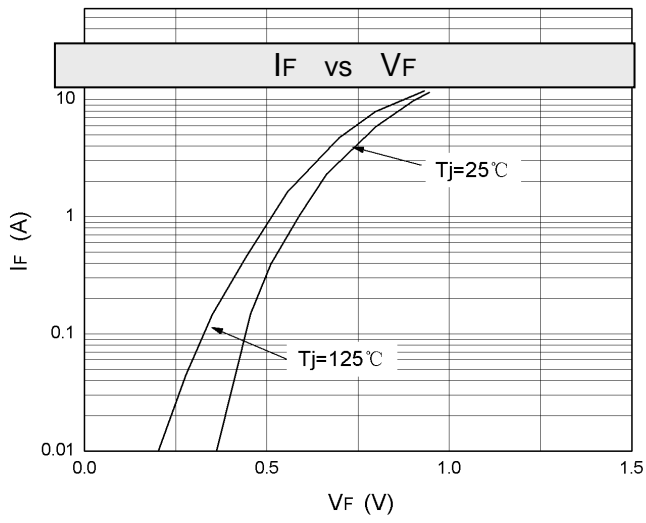
项 目 Parameter	测试条件 Tests conditions		最小值 Value(min)	典型值 Value(typ)	最大值 Value(max)	单 位 Unit
V <sub>RRM</sub>	I <sub>R</sub> =50μA		200			V
I <sub>R</sub>	T <sub>j</sub> =25°C	V <sub>R</sub> =V <sub>RRM</sub>			50	μA
	T <sub>j</sub> =125°C				200	μA
V <sub>F</sub>	T <sub>j</sub> =25°C	I <sub>F</sub> =10A	0.92	0.95	1.1	V
	T <sub>j</sub> =125°C				1.0	V
T <sub>RR</sub>	I <sub>F</sub> =1A, V <sub>R</sub> =30V, di <sub>F</sub> /dt=-200A/μs			22	30	ns

**热特性 THERMAL CHARACTERISTICS**

项 目 Parameter	符 号 Symbol	最小值 Value(min)	最大值 Value(max)	单 位 Unit
结到管壳的热阻 Thermal resistance from junction to case	R <sub>th(j-c)</sub>		1.6	°C/W
			TO-220AB	
	TO-220F			



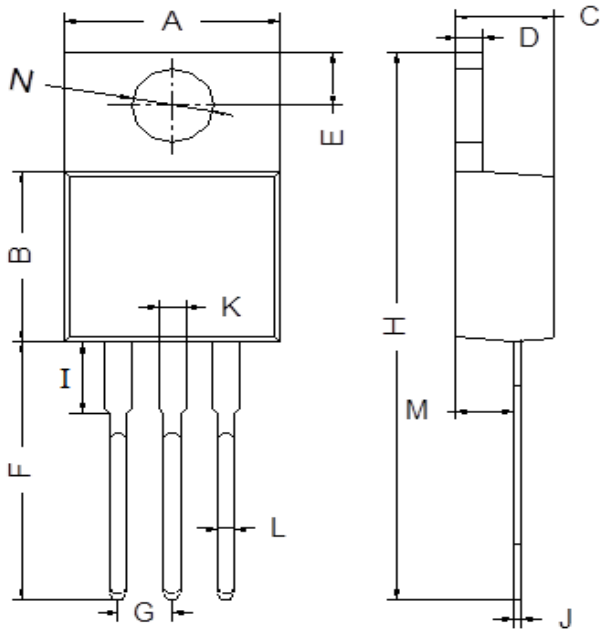
特征曲线 ELECTRICAL CHARACTERISTICS (curves)



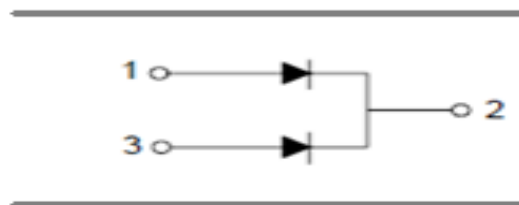
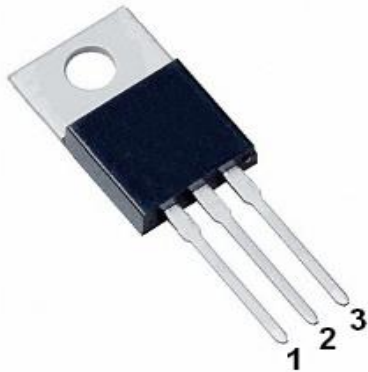


外形尺寸 PACKAGE MECHANICAL DATA

**TO-220AB**



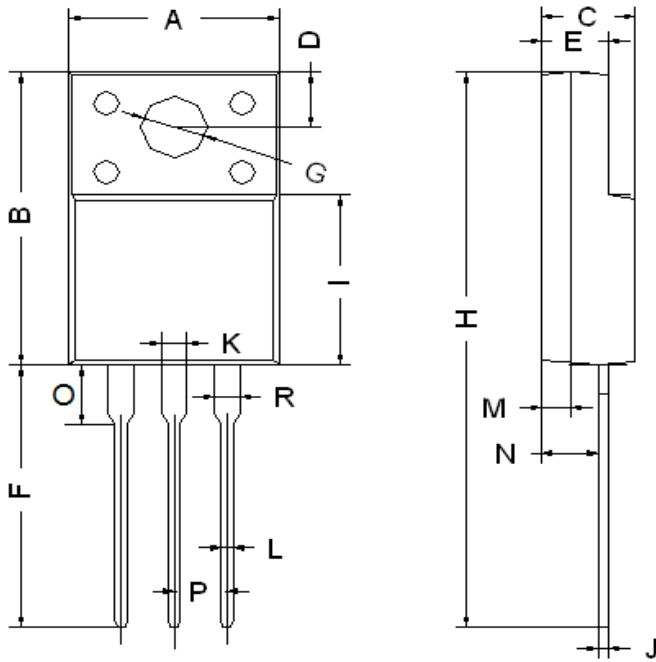
TO-220AB		
Dim	Min	Max
A	9.80	10.30
B	8.30	8.90
C	4.37	4.77
D	1.10	1.45
E	2.62	2.87
F	13.46	14.22
G	2.41	2.67
H	28.40	29.16
I	3.55	4.05
J	0.35	0.58
K	1.20	1.32
L	0.68	0.94
M	2.40	2.60
N	3.71	3.91
All Dimensions in mm		



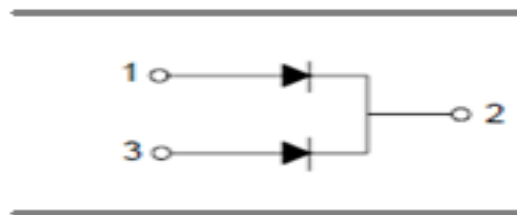
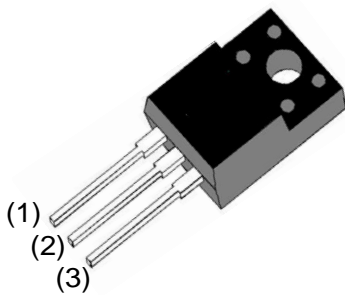


# 外形尺寸 PACKAGE MECHANICAL DATA

## TO-220F



TO-220F		
Dim	Min	Max
A	9.80	10.30
B	15.20	15.80
C	4.37	4.77
D	2.90	3.30
E	2.50	2.90
F	12.90	13.50
G	3.10	3.30
H	28.40	29.16
I	8.40	9.10
J	0.35	0.58
L	0.68	0.94
M	1.30	1.50
N	2.40	2.60
O	2.60	3.10
P	2.40	2.60
K/R	1.10	1.32
All Dimensions in mm		



单击下面可查看定价，库存，交付和生命周期等信息

[>>ZG\(中鑫半导体\)](#)