



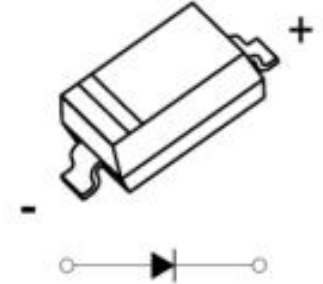
B5819W

SOD-123 Polarity

FEATURES

- For use in low voltage
- High frequency inverters
- free wheeling, and polarity protection applications
- Output Current: $I_o=1.0A$

MARKING: SL



MAXIMUM RATINGS($T_a=25^{\circ}C$ unless otherwise noted)

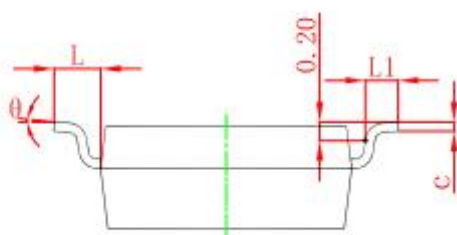
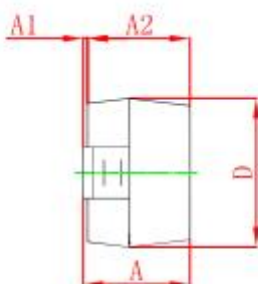
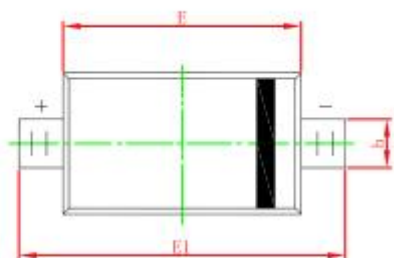
Symbol	Parameter	Limit	Unit
VRM	Non-Repetitive Peak Reverse Voltage	40	V
VRRM	Peak Repetitive Peak Reverse Voltage		
VRWM	Working Peak Reverse Voltage	40	V
VR	DC Blocking Voltage		
VR(RMS)	RMS Reverse Voltage	28	V
IFRM	Repetitive Peak Forward Current	1.5	A
IO	Average Rectified Output Current	1.0	A
IFSM	Non-Repetitive Peak Forward Surge Current @ $t=8.3ms$	9.0	A
Pd	Power Dissipation	500	mW
RθJA	Thermal Resistance Junction to Ambient	200	$^{\circ}C/W$
Tj	Operation Junction Temperature Range	-40~+125	$^{\circ}C$
Tstg	Storage Temperature Range	-55~+150	$^{\circ}C$

ELECTEICAL CHARACTERISTICS($T_a=25^{\circ}C$ unless otherwise specified)

Parameter	Symbol	Test conditions	Min	Typ	Max	Unit
Forward voltage	V_{F1}	$I_F=1A$		0.5	0.62	V
Forward voltage	V_{F2}	$I_F=3A$		0.77	0.92	V
Reverse voltage leakage current	I_R	$V_R=40V$			1	mA
Reverse breakdown voltage	V_{BR}	$I_R=1mA$	40			V

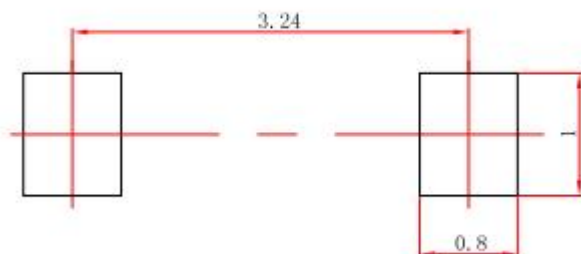


SOD-123 Package Outline Dimensions



Symbol	Dimensions In Millimeters		Dimensions In Inches	
	Min	Max	Min	Max
A	1.050	1.250	0.041	0.049
A1	0.000	0.100	0.000	0.004
A2	1.050	1.150	0.041	0.045
b	0.450	0.650	0.018	0.026
c	0.080	0.150	0.003	0.006
D	1.500	1.700	0.059	0.067
E	2.600	2.800	0.102	0.110
E1	3.550	3.850	0.140	0.152
L	0.500 REF		0.020 REF	
L1	0.250	0.450	0.010	0.018
θ	0°	8°	0°	8°

SOD-123 Suggested Pad Layout



Note:

1. Controlling dimension: in millimeters.
2. General tolerance: $\pm 0.05\text{mm}$.
3. The pad layout is for reference purposes only.

单击下面可查看定价，库存，交付和生命周期等信息

[>>ZG\(中鑫半导体\)](#)