



# MBR1530CT THRU MBR15200CT SCHOTTKY BARRIER RECTIFIERS

Reverse Voltage - 30 to 200 Volts Forward Current - 15.0 Amperes

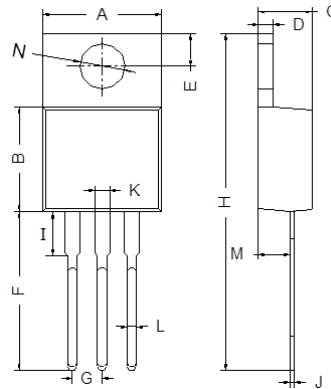
## FEATURES

- Low cost.
- Low leakage.
- Low forward voltage drop.
- High current capability.
- Easily cleaned with Alcohol, Isopropanol and Similar solvents.
- The plastic material carries U/L recognition 94V-0

## MECHANICAL DATA

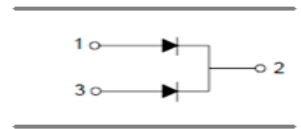
- Case: TO-220AB
- Molding Compound: UL Flammability Classification Rating 94V-0
- Terminals: Matte tin-plated leads; solderability-per MIL-STD-202, Method 208

### TO-220AB



TO-220AB		
Dim	Min	Max
A	9.80	10.30
B	8.30	8.90
C	4.37	4.77
D	1.10	1.45
E	2.62	2.87
F	13.46	14.22
G	2.41	2.67
H	28.40	29.16
I	3.55	4.05
J	0.35	0.58
K	1.20	1.32
L	0.68	0.94
M	2.40	2.60
N	3.71	3.91

All Dimensions in mm



## MAXIMUM RATING operating temperature range applies unless otherwise specified

Symbol	Parameter	MBR 1530 CT	MBR 1535 CT	MBR 1540 CT	MBR 1545 CT	MBR 1550 CT	MBR 1560 CT	MBR 1580 CT	MBR 15100 CT	MBR 15150 CT	MBR 15200 CT	UNIT
$V_{RRM}$	Recurrent Peak Reverse Voltage	30	35	40	45	50	60	80	100	150	200	V
$V_{RMS}$	RMS Reverse Voltage	21	25	28	32	35	42	56	70	105	140	V
$V_{DC}$	DC Blocking Voltage	30	35	40	45	50	60	80	100	150	200	V
$I_{F(AV)}$	Average Forward Total Device Rectified Current @ $T_A=100^\circ\text{C}$	15										A
$I_R$	Reverse Current $V_R=V_{RRM}, T_A=25^\circ\text{C}$ $V_R=V_{RRM}, T_A=125^\circ\text{C}$	15					25		50			mA
$I_{FSM}$	Forward Surge Current 8.3ms Single Half Sine-wave Superimosed on Rated Load	150.										A
$V_F$ (Note1)	Forward $I_F=7.5\text{A}$	0.70			0.80		0.85		0.90		0.95	V
$R_{\theta JC}$	Thermal Resistance(Note1)	1.5										$^\circ\text{C/W}$
$T_J, T_{STG}$	Operating and Storage Temperature Range	-55 to +150										$^\circ\text{C}$

Note:1. Thermal resistance from junction to case.



# TYPICAL CHARACTERISTICS @ Ta=25°C unless otherwise specified

FIG.1 TYPICAL FORWARD CHARACTERISTICS

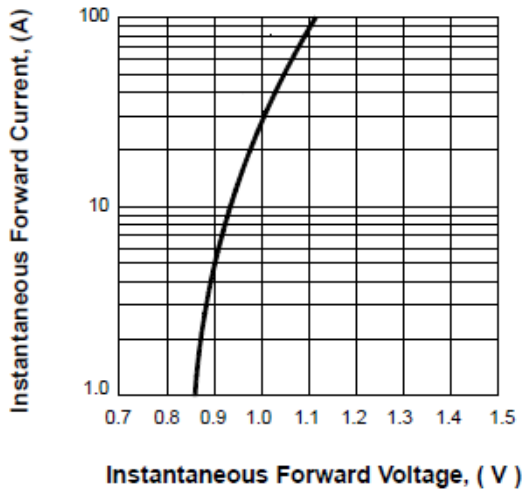


FIG.2 FORWARD DERATING CURVE

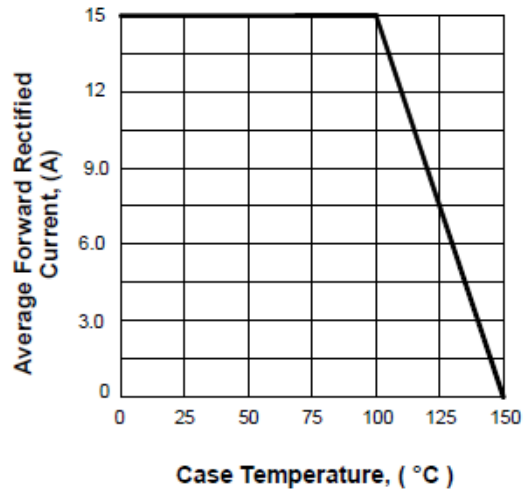


FIG.3 TYPICAL REVERSE CHARACTERISTICS

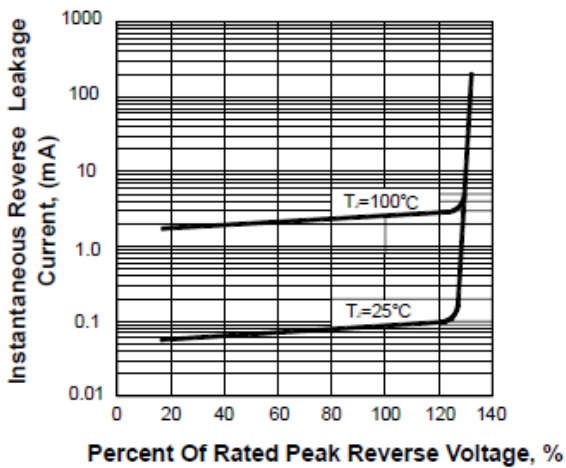
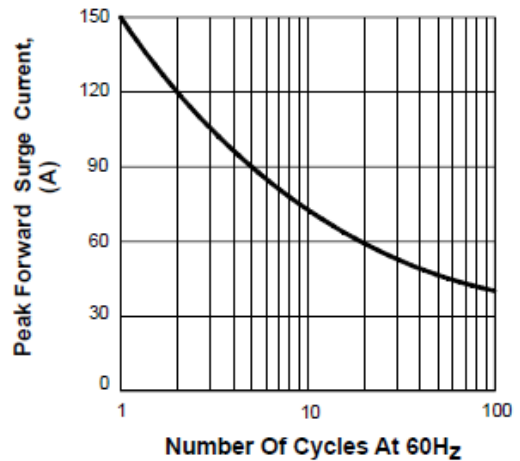


FIG.4 PEAK FORWARD SURGE CURRENT



单击下面可查看定价，库存，交付和生命周期等信息

[>>ZG\(中鑫半导体\)](#)