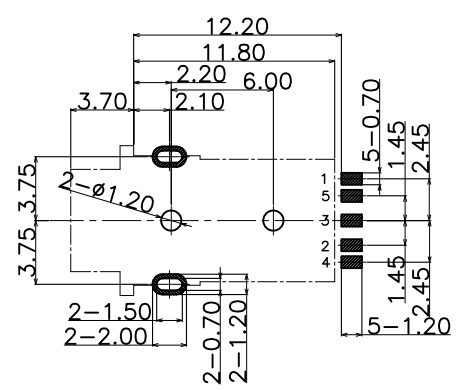
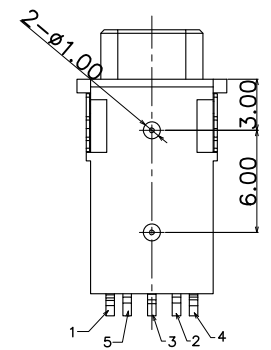
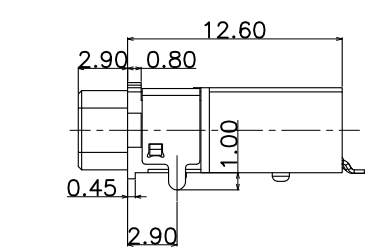
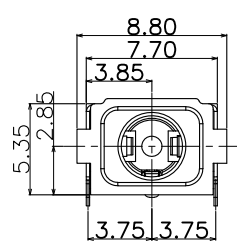


3D VIEW

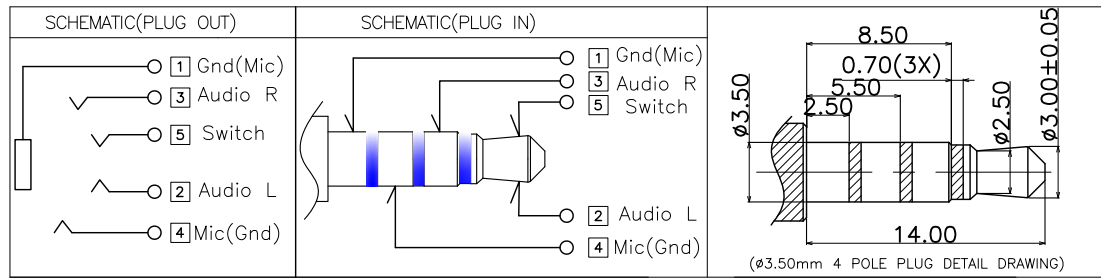


RECOMMENDED P.C.B LAYOUT TOP VIEW

SPECIFICATION:

1. CURRENT RATING:DC 0.5A MAX.
- 2.VOLTAGE RATING:DC 12V.
- 3:CONTACT RESISTANCE:50mΩ MAX.
4. INSULATION RESISTANCE:100MΩ MIN. AT 500V DC.
5. WITHSTANDING VOLTAGE:500V AC FOR 1 MINUTE.
6. LIFE TEST:5000 CYCLES MIN,
7. MATING FORCE:3~30N,
UNMATING FORCE:3~30N.
8. TEPROOF LEVEL: IPX7

NO.	PART NAME	QTY	MATERIAL	DESCRIPTION	REMARK
⑦	Contact_5	⑤	1	Copper Alloy	CONTACT AREA: 1U"MIN SOLDER AREA:1U"MIN 50u" OVER ALL
⑥	Contact_4	④	1	Copper Alloy	
⑤	Contact_3	③	1	Copper Alloy	
④	Contact_2	②	1	Copper Alloy	
③	Contact_1	①	1	Copper Alloy	
②	Separator	1	HIGH TEMP	BLACK,UL94V-0	
①	Housing	1	HIGH TEMP	BLACK,UL94V-0	



深圳市华宇创精密电子有限公司

TOLERANCE: X.X ±0.30 X.XX ±0.25 X.XXX ±0.15 X.' ±2' X.X' ±0.5'	DRAWN BY : 陈一鸣	DATE : 2014-02-23	PART NAME: 防水耳机座 PJ-825
	CHECKED BY: 马跃	DATE : 2014-02-23	PART NO. : HYCW-PJ825-155B
UNIT: mm [inch] SCALE:1:1 SIZE: A4	APPROVED BY: 邱敏	DATE : 2014-02-23	DRAW NO. : HYC-2211021526
			SHEET NO. : 1 OF 1

单击下面可查看定价，库存，交付和生命周期等信息

[>>华宇创](#)