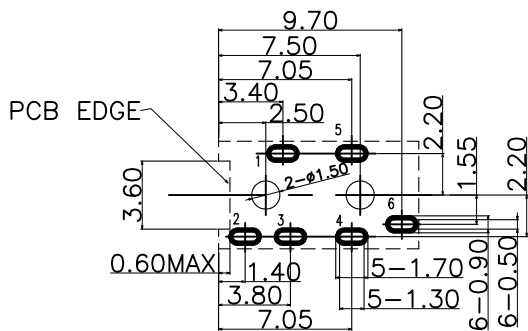
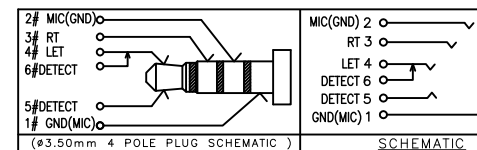
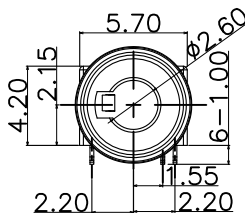
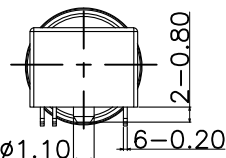
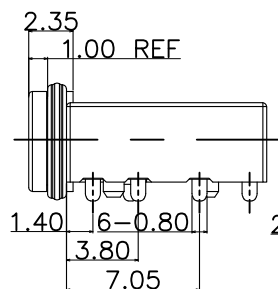
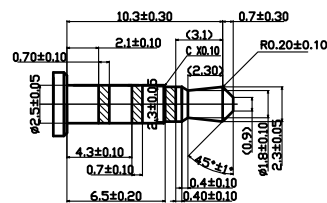


3D VIEW

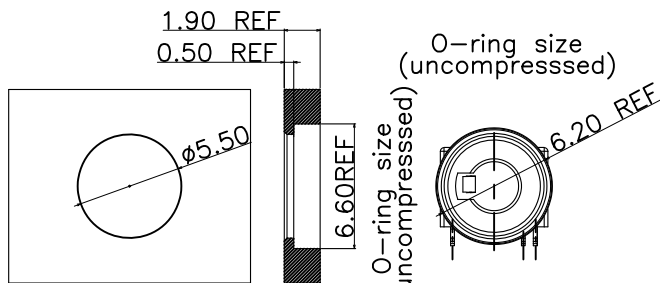
1. CONTACT CURRENT RATING: 1A.
2. CONTACT RESISTANCE: 100 mΩ MAX.;
3. INSULATION RESISTANCE: 100MΩ MIN.;
4. DIELECTRIC WITHSTANDING: 500V AC MIN.;
5. DURABILITY: 5,000 CYCLES MIN.;
6. CONNECTOR MATING FORCES: 30N MAX.;
7. CONNECTOR UNMATING FORCES: 3N MIN.;
8. TERPROOF LEVEL: IP67;



RECOMMENDED P.C.B LAYOUT
TOP VIEW (TOLRANCE:±0.05)



(φ2.50mm 4 POLE PLUG DETAIL DRAWING)



面板开孔参考尺寸

| 9 | SILICA GEL | 1 | SILICA GEL COLOR BLACK | |
|-----|-------------|-----|--|----------|
| 8 | COVER | 1 | HIGH TEMPERATURE PLASTIC COLOR BLACK | |
| 7 | HOUSING | 1 | HIGH TEMPERATURE PLASTIC COLOR BLACK | |
| 6 | TERMINAL 6# | 1 | STAINLESS STEEL; NICKEL UNDER PLATING OVERALL; GOLD FLASH PLATING ON SOLDER AREA ;GOLD FLASH PLATING ON CONTACT AREA | T=0.20mm |
| 5 | TERMINAL 5# | 1 | STAINLESS STEEL; NICKEL UNDER PLATING OVERALL; GOLD FLASH PLATING ON SOLDER AREA ;GOLD FLASH PLATING ON CONTACT AREA | T=0.20mm |
| 4 | TERMINAL 4# | 1 | STAINLESS STEEL; NICKEL UNDER PLATING OVERALL; GOLD FLASH PLATING ON SOLDER AREA ;GOLD FLASH PLATING ON CONTACT AREA | T=0.20mm |
| 3 | TERMINAL 3# | 1 | PHOSPHOR BRONZE; NICKEL UNDER PLATING OVERALL; GOLD FLASH PLATING ON SOLDER AREA ;GOLD FLASH PLATING ON CONTACT AREA | T=0.20mm |
| 2 | TERMINAL 2# | 1 | PHOSPHOR BRONZE; NICKEL UNDER PLATING OVERALL; GOLD FLASH PLATING ON SOLDER AREA ;GOLD FLASH PLATING ON CONTACT AREA | T=0.20mm |
| 1 | TERMINAL 1# | 1 | STAINLESS STEEL; NICKEL UNDER PLATING OVERALL; GOLD FLASH PLATING ON SOLDER AREA ;GOLD FLASH PLATING ON CONTACT AREA | T=0.20mm |
| NO. | PART NAME | QTY | DESCRIPTION | REMARK |



深圳市华宇创精密电子有限公司

| | | | |
|---|---------------------|----------------------|--------------------------------|
| TOLERANCE: X.X ±0.30 X.XX ±0.25 X.XXX ±0.15 X' ±2' X.X' ±0.5' | DRAWN BY : 陈一鸣 | DATE : 2014-02-23 | PART NAME: 2.5防水耳机座 PJ-1850 |
| | CHECKED BY : 马跃 | DATE : 2014-02-23 | PART NO. : HYCW-PJ1850-126B |
| UNIT: mm [inch] SCALE:1:1 SIZE: A4 | APPROVED BY : 邱敏 | DATE : 2014-02-23 | DRAW NO. : HYC-2211021904 |
| | | | SHEET NO. : 1 OF 1 |

单击下面可查看定价，库存，交付和生命周期等信息

[>>华宇创](#)