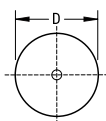
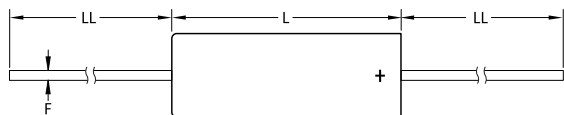


**KEMET Part Number: M39003/02-1202E** **Not for New Design**  
 (T222B475J020SS4251, CSR09E475JSE)

T222\_CSR09, Tantalum, MnO2 Tantalum, Military/High Reliability, 4.7 uF, 5%, 20 VDC, 4.5 Ohms



Dimensions	
D	3.51mm +/-0.25mm
L	9.91mm +0.38/-0.39mm
LL	38.1mm +/-6.35mm
F	0.41mm +0.13/-0.03mm

Packaging Specifications	
Packaging:	Bulk, Box
Packaging Quantity:	150

General Information	
Series:	T222_CSR09
Dielectric:	MnO2 Tantalum
Style:	Axial Hermetic
Description:	Axial, Solid Tantalum, Hermetically Sealed, Military, Polar, Miniature, CSR09 Style
Features:	Miniature, Polar
RoHS:	No
Prop 65:	<b>WARNING:</b> Cancer and reproductive harm - <a href="http://www.p65warnings.ca.gov">www.p65warnings.ca.gov</a> .
REACH:	SVHC (Pb – CAS 7439-92-1)
Termination:	Lead (SnPb)
Lead:	Wire Leads
AEC-Q200:	No
Construction:	Hermetic
Notes:	Dimensions Include Insulating Sleeve. Positive Lead: Alloy 52 (Solder Coated); Negative Lead: Solder Coated Nickel

Specifications	
Capacitance:	4.7 uF
Capacitance Tolerance:	5%
Voltage DC:	20 VDC (85C), 16 VDC (125C Surge), 0.2 VDC (125C Reverse)
Temperature Range:	-55/+125°C
Failure Rate:	S (0.001%/1000 Hrs)
Resistance:	4.5 Ohms (100kHz)
Ripple Current:	141 mAmps (100kHz)
Leakage Current:	2 uA
Testing and Reliability:	Option E, Surge Testing At -55C And +85C After Weibull

Statements of suitability for certain applications are based on our knowledge of typical operating conditions for such applications, but are not intended to constitute - and we specifically disclaim - any warranty concerning suitability for a specific customer application or use. This Information is intended for use only by customers who have the requisite experience and capability to determine the correct products for their application. Any technical advice inferred from this Information or otherwise provided by us with reference to the use of our products is given gratis, and we assume no obligation or liability for the advice given or results obtained.

单击下面可查看定价，库存，交付和生命周期等信息

[>>KEMET Electronics\(基美\)](#)