



# TE CONNECTIVITY® APPLICATION TOOLING PRODUCT LINE CARD

A COMPLETE LINE OF QUALITY  
TOOLING SOLUTIONS



# PORTABLE WIRE PROCESSING

## Standard Die Envelope (SDE)

SDE technology is a flexible and affordable approach to crimp tooling. With the SDE platform, a user has the ability to crimp hundreds of TE contacts without purchasing a unique tool for each crimp. It minimizes the need for owning multiple tools by combining two, three and sometimes four crimp nests into one die set that can be inserted easily into manual, battery or pneumatically-powered TE equipment. SDE tooling is ideal for R&D, networking applications, on-site maintenance and repair work.

**32 - 10 AWG (.03 mm<sup>2</sup> - 5 mm<sup>2</sup>)**



## CERTI-CRIMP

The CERTI-CRIMP family consists of reliable, repeatable and certified crimp tooling to handle a variety of industry-mandated specifications. CERTI-CRIMP tools are available in both manual and battery-powered formats.

**32 - 10 AWG (.03 mm<sup>2</sup> - 5 mm<sup>2</sup>)**



## Hydraulic Crimp

Our line of quality hydraulic tooling includes industry-standard HYP8 & HYP10 tool systems. The basic hydraulic tool system requires a pump, hose (multiple lengths are available with all configurations), crimp head, and shank or U-dies.

**8 AWG - 1000 MCM (8 mm - 506 mm<sup>2</sup>)**



### Manual Power



- Adjustable ratchet control system
- Ergonomic designs
- Certified and non-certified options available
- Recommended for less than 60 crimps/hour

### Battery Power



- Short charge times
- 3,400 - 24,000 lbs of crimp force
- Recommended for less than 90 crimps/hour

### Insulation Displacement



- Interchangeable heads
- One-at-a-time and mass termination options available
- Available in manual and benchtop configurations

### Pneumatic Power



- Lightweight design
- Hand or foot operated
- Rotating heads
- Recommended for less than 90 crimps/hour

### Hydraulic Power



- Shank & U-dies
- 8,200 (HYP8) & 10,000 (HYP10) lbs of crimp force
- Requires a pump, hose and foot or hand control to operate

### Specialized Tooling



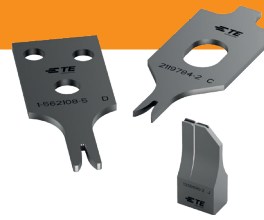
- Customizable kits
- Terminal strip cutter
- 4-way indent tools

# APPLICATORS & SPARE TOOLING



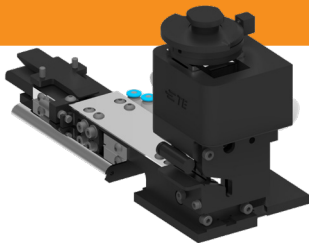
## OCEAN 2.0

Mechanical & pneumatic feed  
26 - 7 AWG (.13 - 10 mm<sup>2</sup>)  
Atlantic & Pacific style ram configurations  
Excellent repeatability  
30 & 40 mm stroke



## Spare Tooling

Precision ground, chrome plated  
Engineered for compliance to meet OEM specifications  
UL listed  
CSA certified



## Splice

20 - 3 AWG (.5 - 25 mm<sup>2</sup>)  
40 mm stroke  
Shut height: 135.78  
Fine adjustment  
For both pig-tail and thru-splice applications



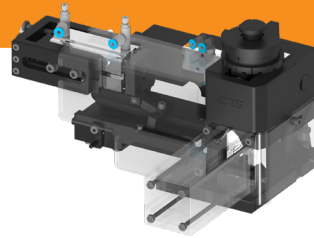
## Mini Loose Piece

26 - 7 AWG (.14 - 10 mm<sup>2</sup>)  
40 mm stroke  
Shut height: 135.78 mm  
Fine adjustment  
Ready for ferrule crimps for Data Connectivity



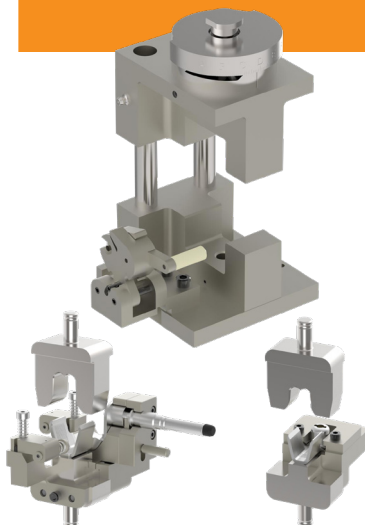
## Mid Size Wire

7 - 3 AWG (10 - 25 mm<sup>2</sup>)  
40 mm stroke  
Shut height: 135.78 mm  
Fine adjustment  
Fits on presses that accept traditional applicators  
Strip & loose piece terminal loading



## Large Wire

3 - 0 AWG (25 - 50 mm<sup>2</sup>)  
Fine adjustment  
40 mm stroke  
Shut height: 154.78 mm  
Strip and loose piece terminal loading



## High Voltage

Mechanical & pneumatic feed  
5 - 4Ø AWG (16 - 120 mm<sup>2</sup>)  
Atlantic & Pacific style ram configurations  
Excellent repeatability

## Insertion/Extraction Tools



# SEMI-AUTOMATED WIRE PROCESSING



**HV-CP**

Multi-step stripping of multi-layered conductors in as fast as 30 seconds

Self calibrating

Processes 10 - 120 mm<sup>2</sup> cable

Stores up to 1,500 unique profiles

CE approved

**3K/5K**

Capable of 3,000 or 5,000 lbs of crimp force

Priced competitively

30 & 40 mm stroke

Available with & without crimp quality monitor (CQM II)

Defective crimp cut & stripping module versions available

CE approved on select models

**GII**

Capable of 5,000 lbs of crimp force

Improved interior lighting compared to 3K/5K platform

40 mm stroke only

Available with & without CQM II

Quieter than 3K/5K models

Recommended for customers who have tape-fed applications

Split cycle is standard

Defective crimp cut & stripping module versions available

CE approved

**GII+**

Capable of 10,000 lbs of crimp force

40 mm stroke only

Available with & without CQM II

Capable of processing strip & loose piece terminals

CE approved on select models

**HF-20T**

Capable of 40,000 lbs of crimp force

Capable of processing wires up to 120 mm<sup>2</sup>

CE approved

**HV-20T**

Capable of 40,000 lbs of crimp force

44 mm stroke only

Includes CQM II

Capable of processing wires up to 120 mm<sup>2</sup>

CE approved

**Inverted Splice**

Capable of crimping two or more stranded or magnet wires with a combined CMA of 400 - 13,000

Designed to handle pig-tail & splice terminals

Available with & without CQM II

CE approved

# HEAT SHRINK MACHINES



## RBK-X1

Tubing diameter up to 19 mm

Tubing length up to 70 mm long

Stores hundreds of unique profiles

Compatible with upstream ultrasonic welder

CE approved on select models



## Model 17

Closed-loop temp and belt speed control

Suitable for continuous operation

Tubing diameter up to 19 mm

Tubing length up to 90 mm

CE approved



## Model 19

Tubing diameter up to 25 mm

Tubing length up to 102 mm (178 mm with the help of the wide heating element tool)

CE approved



## Model 105

Tubing diameter up to 76.2 mm

Tubing length unlimited

Stores hundreds of unique profiles

Compatible with upstream ultrasonic welder

CE approved on select models



## CV-OBHAT

Lightweight, portable hot air tool, used to install TE's RAYCHEM ES-Cap stub splice sealing products

CE approved



## IR-1891

Twin workstation heater for multiple installation of short length tubing products

Multiple product fixtures supports increased process rates

Tubing diameter up to 20 mm

Tubing length up to 60 mm

CE approved



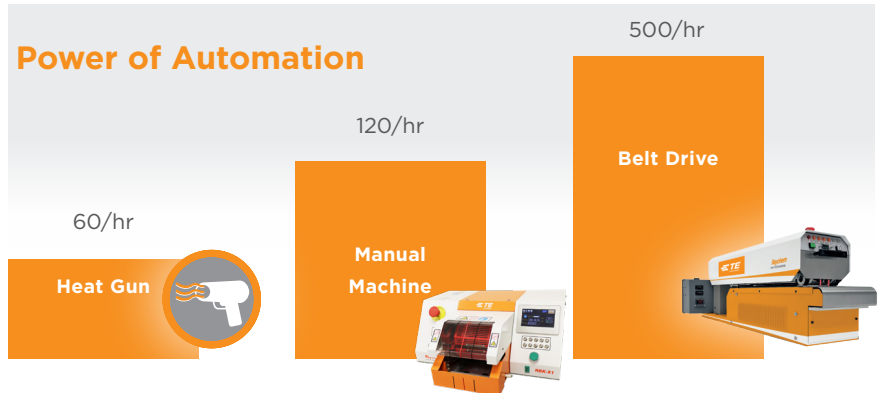
## AD-3050

Fast determination of sealing integrity

Multiple test fixtures

CE approved on select models

## Power of Automation



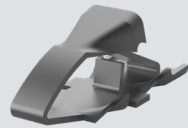


# MAGNET WIRE EQUIPMENT

## MAG-MATE



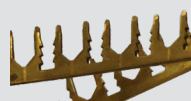
## Mini MAG-MATE



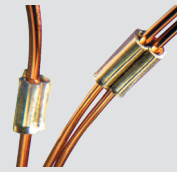
## SIAMESE



## Leadlok



## AMPLIVAR



## Power Splice



### Arbor Press

Ideal for repair, service and prototype work



### Inverted AMPLIVAR

AMPLIVAR, Pigtail and Thru-splice termination for magnet wire & lead wire combinations



### APT-5A & 5E

Fast, efficient system for Amplivar applications with no need to strip magnet wire insulation



### MK I & II

For MAG-MATE, SIAMESE & Leadlok terminal applications

Single, dual, triple and quadruple insertion capabilities

Optional insertion force monitoring

Insertion module with or without electrical cabinet & touch panel options available

CE approved



### Workstation

Standardized and customized work stations to meet customer demands

Designed to automatically insert terminals into cavities of coil bodies

CE approved

Auto crimp height adjustment & CQM models available

Infinite splice models available

Connects up to 3 wires in 1 splice

CE approved



### Power Splice

Reliable pigtail splice termination of magnet wire and solid or stranded lead wires



### Thru-Splice

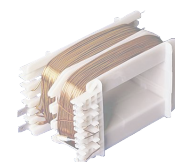
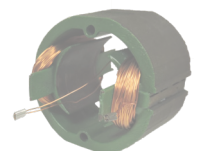
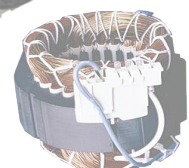
Includes fine crimp height adjustment

Full guarding with interlocks

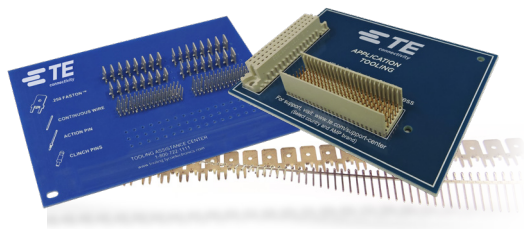
Total and batch counters

Jog & split cycle operation

CE approved



# BOARD PROCESSING EQUIPMENT



TE Connectivity offers a wide range of discrete pin insertion and servo driven connector seating machines that mass terminate compliant pin connectors. So there's one that is perfectly suited for your product needs. And each model leverages the simple, field-proven, solder-free manufacturing offered by the entire TE product line.

## Pin Insertion Machines (All Pin Insertion machines are CE approved and have a PCB & carrier capacity of 420 x 360 mm)



### P100

Manual to fully auto designs  
PCB & connector stitching applications  
Repeatability:  $\pm 0.02$  mm  
Bi-directional mode for carrier and PCB handling  
Insertion rate: 1.5 cycles/s at 10 mm pitch  
Capable of double insertion mode



### P300

Manual to fully auto designs  
PCB applications  
Repeatability:  $\pm 0.02$  mm  
Insertion rate: 3 cycles/s at 10 mm pitch  
Capable of triple insertion mode



### P360

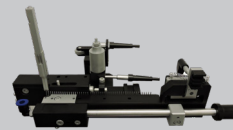
Fully auto designs  
PCB & connector stitching applications  
Repeatability:  $\pm 0.01$  mm  
Insertion rate: 5 cycles/s at 25 mm pitch  
Capable of triple insertion mode  
Bi-directional mode for carrier and PCB handling



### P550

Fully auto design  
PCB & connector stitching applications  
Repeatability:  $\pm 0.01$  mm  
Insertion rate up to 5 cycles/sec at 25 mm pitch  
Capable of triple insertion mode  
Bi-directional mode for carrier & PCB handling

## Conversion Kits



All P-series machines can be supplied with modular insertion tools that allow the tooling to be quickly changed on the insertion head



### C360

Fully automated loose piece press for forces up to 5kN  
For connectors and various other applications  
Repeatability:  $\pm 0.01$  mm  
Insertion Rate: 1 insertion / second  
Bi-directional mode for carrier & PCB handling

## Connector Seating Machines



### CBP-5T MK II

Servo electric press  
PCB capacity of 460 x 610 mm  
44 kN press force  
CE approved



### CSP MK II

Shuttle system for product location under press ram  
Housing capacity of 75 x 150 mm  
Manual & pneumatic option  
CE approved



### CMP-5T MK II

53 kN press force  
Board capacity of 610 x 915 mm  
Wide range of insertion heads available  
CE approved



### CMP-10T MK II

107 kN press force  
Board capacity of 610 x 915 mm  
Wide range of insertion heads available  
CE approved



### CAP-6T

Manual loading drawer for simple PCB loading & unloading  
Board capacity of 760 x 910 mm  
53 kN of force



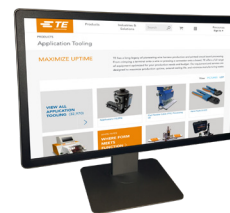
### CAPI-6T

Inline system (SMEMA compatible)  
Board capacity of 760 x 910 mm  
53 kN of force



## Let's Connect

Learn more about our comprehensive line of tooling solutions at [tooling.te.com](http://tooling.te.com).



## TE Connectivity Technical Support Center

USA:  
1.800.522.6752

S. America  
+54.11.3404.6261

France:  
+33.1.34.20.8686

Canada:  
1.800.522.6752

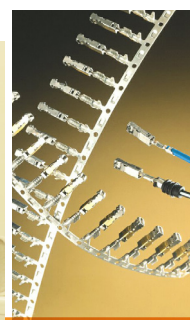
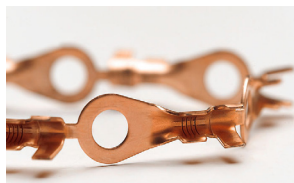
Germany:  
+49.6151.607.1999

Netherlands:  
+31.73.624.6999

Mexico:  
+52.55.11.06.0800

UK:  
+44.0800.267666

China:  
+86.400.820.6015



## TE APPLICATION TOOLING FIELD SERVICES

### YOUR RESOURCE FOR EXPERT TECHNICAL SUPPORT

TE Application Tooling is supported by a responsive organization of service engineers located conveniently across the globe to provide timely response to customer needs.

In addition to installation, warranty and repair service, TE Field Engineers can help with selection of the most appropriate equipment for your requirements: training of maintenance and operation personnel, troubleshooting assistance; and spare parts. Service contracts to cover all your application equipment are also available.

## te.com

OCEAN, AMP, AMP 3/K-40, AMP 5K/40, TE Connectivity and the TE connectivity (logo) are trademarks. All other logos, products and/or company names referred to herein might be trademarks of their respective owners. The information given herein, including drawings, illustrations and schematics which are intended for illustration purposes only, is believed to be reliable. However, TE Connectivity makes no warranties as to its accuracy or completeness and disclaims any liability in connection with its use. TE Connectivity's obligations shall only be as set forth in TE Connectivity's Standard Terms and Conditions of Sale for this product and in no case will TE Connectivity be liable for any incidental, indirect or consequential damages arising out of the sale, resale, use or misuse of the product. Users of TE Connectivity products should make their own evaluation to determine the suitability of each such product for the specific application.

© 2020 TE Connectivity Ltd. family of companies All Rights Reserved.

2338133-1 05/20 Rev C

### Contact us today to learn more

E-mail (Americas): [fieldservicesnorthamerica@te.com](mailto:fieldservicesnorthamerica@te.com)

Phone (Americas): 800-722-1111 or 717-986-3434

E-mail (EMEA): [TEFE1@te.com](mailto:TEFE1@te.com)

Phone (EMEA): +49-6151-607-1518

For additional information download catalog no. 1-1307619-0 from [tooling.te.com](http://tooling.te.com).

[www.te.com](http://www.te.com)