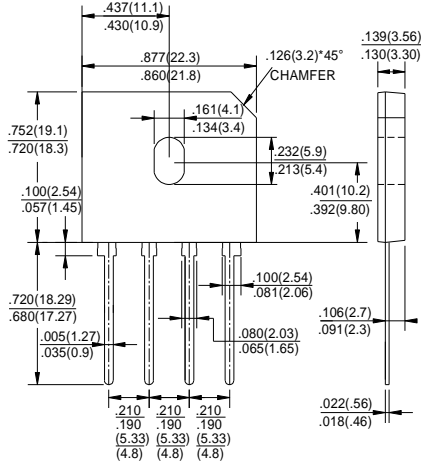


# GBU15005 THRU GBU1510

## GLASS PASSIVATED BRIDGE RECTIFIERS

Reverse Voltage - 50 to 1000 Volts Forward Current - 15.0 Amperes

### GBU



### FEATURES

- ◆ Surge overload rating -240 amperes peak
- ◆ Ideal for printed circuit board
- ◆ Reliable low cost construction utilizing molded plastic technique
- ◆ Plastic material has U/L flammability classification 94V-0

### MECHANICAL DATA

**Case:** Molded plastic body

**Lead:** Solder plated

**Polarity:** As marked

### MAXIMUM RATINGS AND ELECTRICAL CHARACTERISTICS

Ratings at 25°C ambient temperature unless otherwise specified.

Single phase half-wave 60Hz, resistive or inductive load, for capacitive load current derate by 20%.

CHARACTERISTICS	SYMBOL	GBU 15005	GBU 1501	GBU 1502	GBU 1504	GBU 1506	GBU 1508	GBU 1510	UNIT	
Maximum Recurrent Peak Reverse Voltage	V <sub>RRM</sub>	50	100	200	400	600	800	1000	V	
Maximum RMS Voltage	V <sub>RMS</sub>	35	70	140	280	420	560	700	V	
Maximum DC Blocking Voltage	V <sub>DC</sub>	50	100	200	400	600	800	1000	V	
Maximum Average Forward (with heatsink Note 2) Rectified Current @ T <sub>c</sub> =100°C (without heatsink)	I <sub>(AV)</sub>					15.0				A
Peak Forward Surge Current 8.3ms Single Half Sine-Wave Super Imposed on Rated Load (JEDEC Method)	I <sub>FSM</sub>					240				A
Maximum Forward Voltage at 7.5A DC	V <sub>F</sub>					1.1				V
Maximum DC Reverse Current @ T <sub>J</sub> =25°C at Rated DC Blocking Voltage @ T <sub>J</sub> =125°C	I <sub>R</sub>					10.0				µA
I <sup>2</sup> t Rating for Fusing (t<8.3ms)	I <sup>2</sup> t					200				A <sup>2</sup> s
Typical Junction Capacitance Per Element (Note1)	C <sub>J</sub>					70				pF
Typical Thermal Resistance	R <sub>θJC</sub>					2.2				°C/W
Operating Temperature Range	T <sub>J</sub>					-55 to +150				°C
Storage Temperature Range	T <sub>STG</sub>					-55 to +150				°C

NOTES: 1. Measured at 1.0MHz and applied reverse voltage of 4.0V DC.

2. Device mounted on 100mm\*100mm\*1.6mm Cu plate heatsink.

# RATINGS AND CHARACTERISTIC CURVES GBU15005 THRU GBU1510

FIG.1-MAXIMUM FORWARD SURGE CURRENT

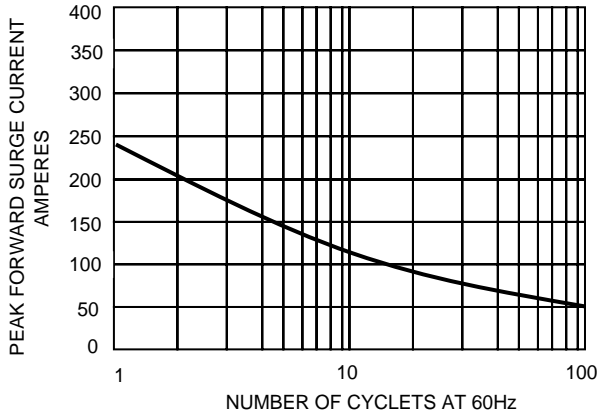


FIG.2- DERATING CURVE  
OUTPUT RECTIFIED CURRENT

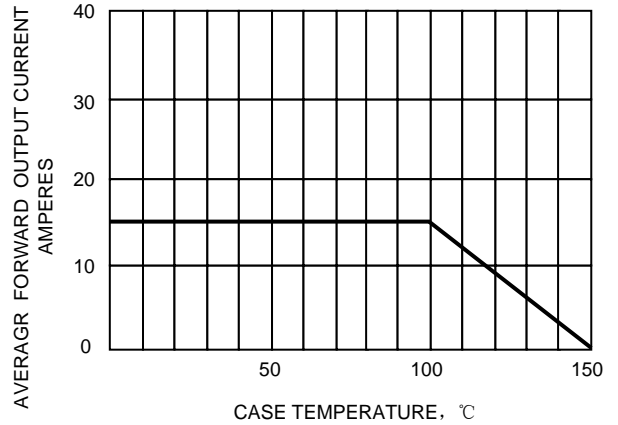


FIG.3-TYPICAL FORWARD  
CHARACTERISTICS

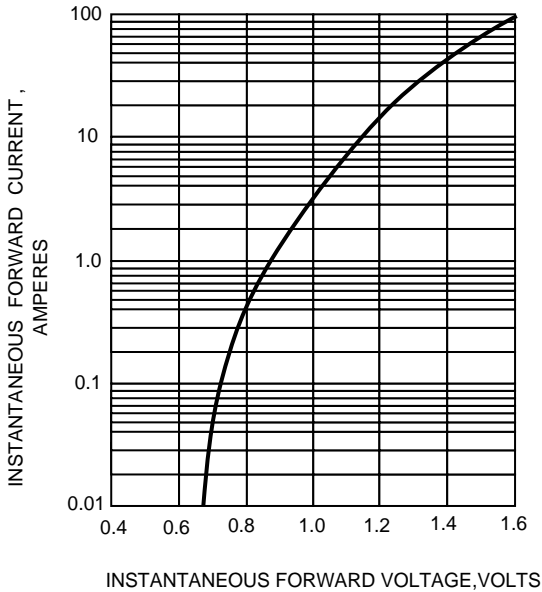
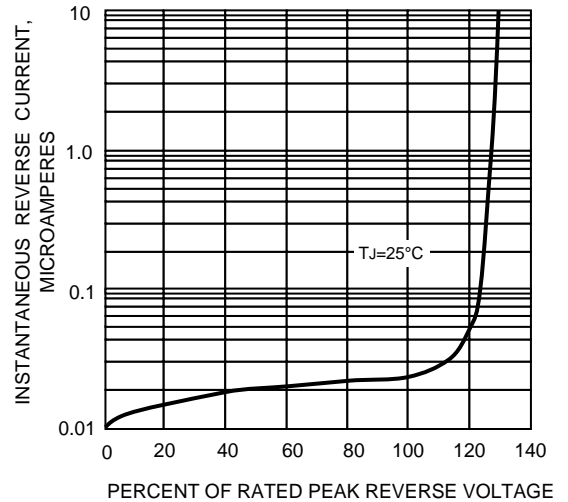


FIG.4-TYPICAL REVERSE  
CHARACTERISTICS



单击下面可查看定价，库存，交付和生命周期等信息

[>>STAR\\_SEA\(星海\)](#)