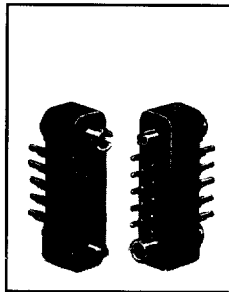


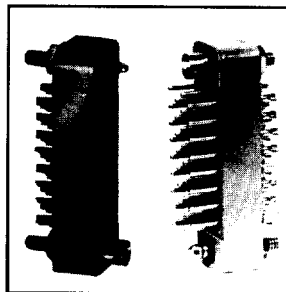
# Rack & Panel

## SLE - SME - SRE Series

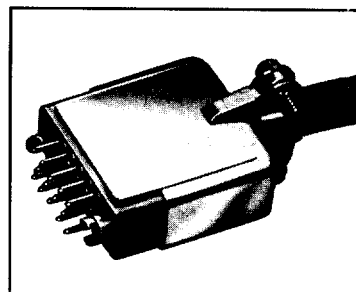
### Sub Miniature / High Density Rectangular / .025" Dia. / 3 Amps .030" Dia. / 5 Amps / .040" Dia. / 7.5 Amps



**SLE**  
.025 Diameter Contacts —  
3 Amps.



**SRE**  
.030 Diameter Contacts — 5 Amps



**SME**  
.040 Diameter Contacts — 7.5 Amps

Within this series, you'll find a standard size connector for which you can select one of three current ratings: 3, 5 or 7.5 amps. Compact and lightweight, they are especially suited for

aircraft, instrumentation and portable equipment applications.

Right angle, dip solder, pin or socket contacts are available. Consult factory.

## SPECIFICATIONS

**Current Rating:** SLE - 3 amps; SRE - 5 amps;  
SME - 7.5 amps.

**No. of Contacts:** 4, 5, 7, 9, 11, 14, 20, 26, 29,  
34, 44, 50.

**Pin Contacts:** Brass, gold plated except for  
SLE which is phosphor  
bronze, gold plated.

**Socket Contacts:** Phosphor bronze, gold plated.

**Termination Types:** .037 diameter solder cup will  
accept up to #22 AWG  
stranded wire. Solder cup  
adaptor (Part No. S45) will  
accept up to #20 AWG  
stranded wire. Dip solder  
terminations available for SRE  
Series, .030 Dia. Check  
Sales Department for  
available lengths.

Military versions of SRE are  
QPL'd to M28748/7 and  
M28748/8.

**Electrical Data:** The dielectric withstanding  
voltage is one minute  
electrification at 1000 VAC.

**Dielectric:** Green glass-filled diallyl  
phthalate per MIL-M-14,  
SDG-F.

**Guides:** Type NSS stainless steel,  
passivated or Type N Brass,  
gold plated.

**Jackscrews:** Stainless steel, passivated.  
Aluminum knobs on the  
jackscrews are equipped with  
set screws, except JTU  
jackscrews which have  
stainless steel knobs  
equipped with groove pins.

**Hoods:** Anodized aluminum. May be  
applied to either plug or  
receptacle. Both top and side  
openings are available  
for use with either guides  
or jackscrews.

Winchester Electronics

400 Park Road ■ Watertown, Connecticut 06795-0500 ■ Phone: (860) 945-5000 ■ FAX: (860) 945-5191 ■ Internet: <http://www.litton-wed.com>

# Rack & Panel

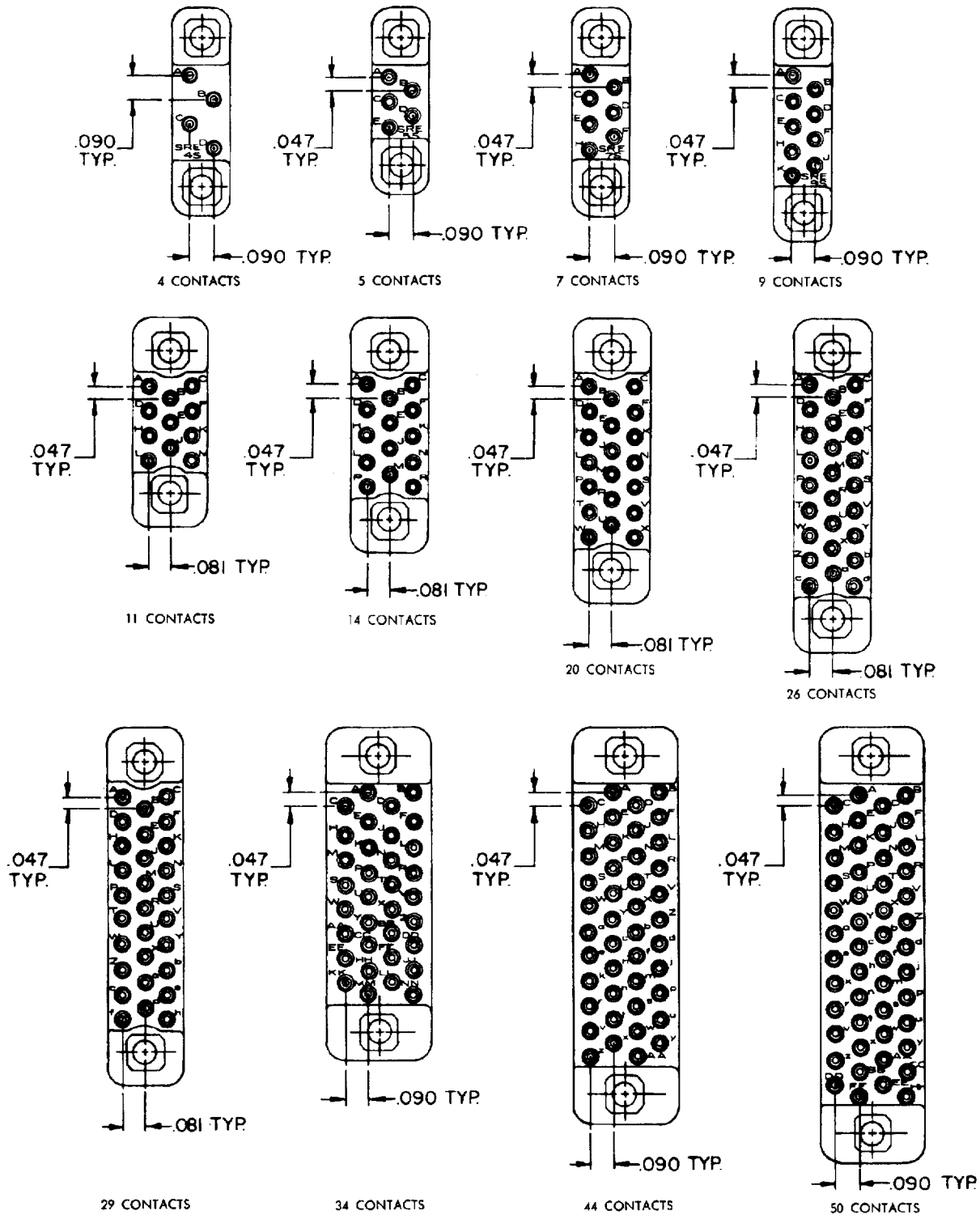
## SLE - SME - SRE Series

Sub Miniature / High Density Rectangular / .025" Dia. / 3 Amps  
.030" Dia. / 5 Amps / .040" Dia. / 7.5 Amps

### CONTACT ARRANGEMENT

Mating Face of Female Moldings - Male Moldings Reverse Image

Dimensions are for reference only and are subject to change. Outline drawings on request.



Winchester Electronics

400 Park Road ■ Watertown, Connecticut 06795-0500 ■ Phone: (860) 945-5000 ■ FAX: (860) 945-5191 ■ Internet: <http://www.litton-wed.com>

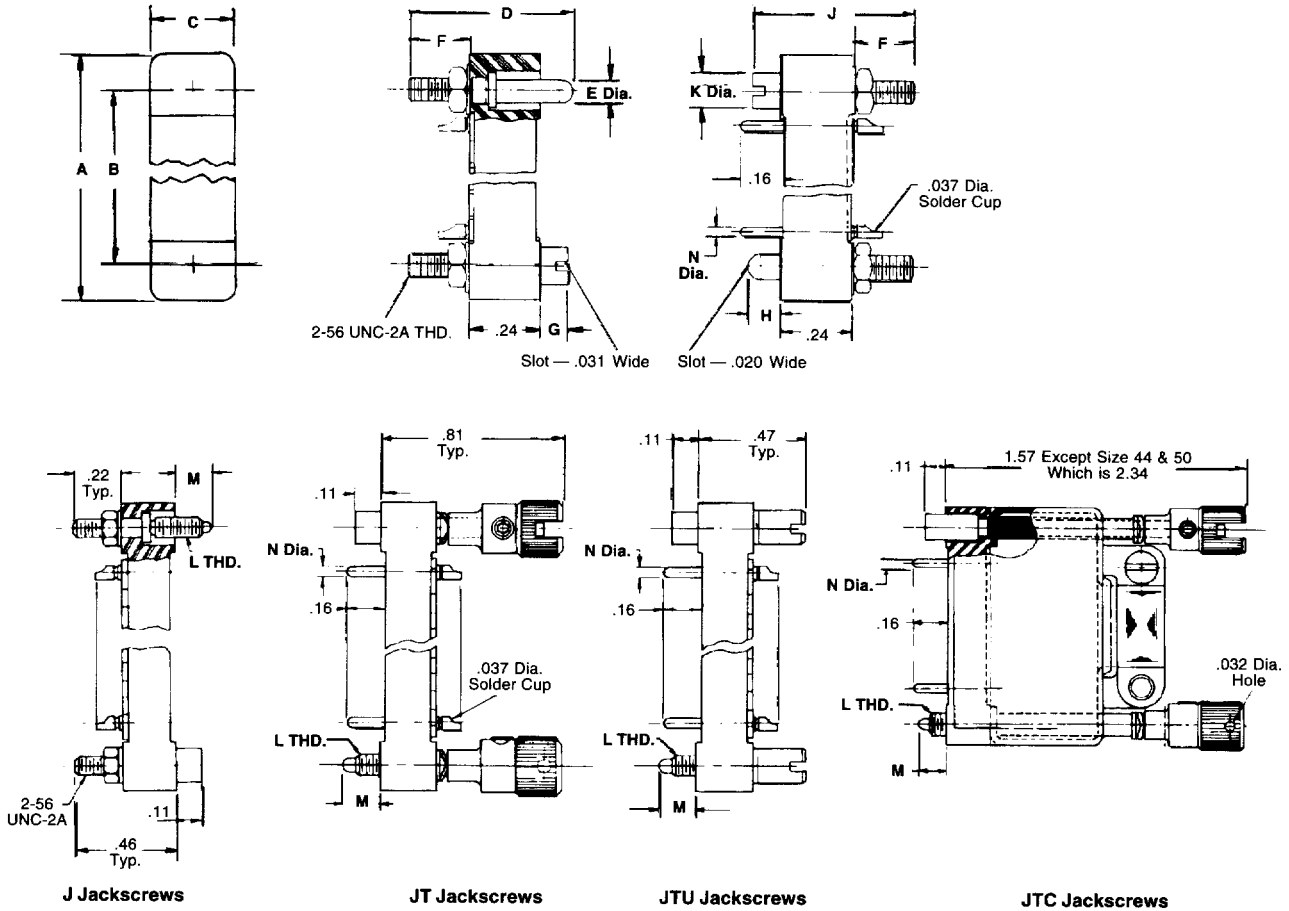
# Rack & Panel

## SLE - SME - SRE Series

Sub Miniature / High Density Rectangular / .025" Dia. / 3 Amps  
 .030" Dia. / 5 Amps / .040" Dia. / 7.5 Amps

### OUTLINE

Dimensions are for reference only and are subject to change. Outline drawings on request.



### DIMENSIONS

The stainless steel guide pin and socket have good physical strength and are particularly desirable for mounting connectors which will be

subject to severe vibration in service, but not for electrical applications. Optional gold plated brass available for electrical applications.

No. of Contacts	A	B	C
4	.78	.562	.21
5	.70	.482	.21
7	.78	.562	.21
9	.88	.656	.21
11	.78	.531	.28
14	.88	.625	.28
20	1.06	.814	.28
26	1.25	1.000	.28
29	1.34	1.094	.28
34	1.25	1.032	.39
44	1.48	1.267	.39
50	1.63	1.408	.39

Series	D	E Dia	F	G	H	J	K	L Thd	M	N
SLE	.62	.08	.24	.10	.14	.59	.125	2-56 UNC	.15	.025
SRE	.57	.09	.22	.11	.12	.57	.137	3-48 UNC*	.12	.030
SME	.62	.08	.24	.10	.14	.59	.125	2-56 UNC	.15	.040

\*2-56 UNC Thread also available.  
 See ordering information for part number suffix.

Winchester Electronics

400 Park Road ■ Watertown, Connecticut 06795-0500 ■ Phone: (860) 945-5000 ■ FAX: (860) 945-5191 ■ Internet: <http://www.litton-wed.com>

# Rack & Panel

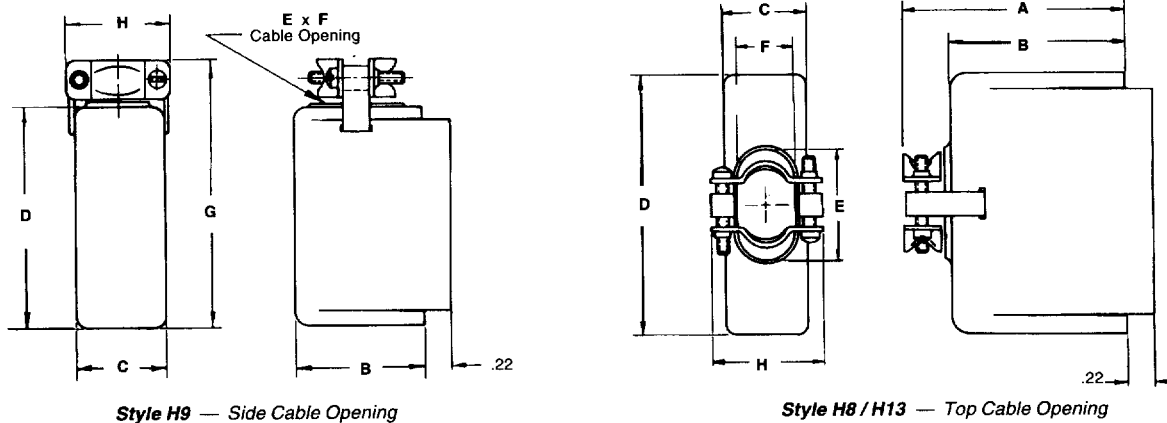
## SLE - SME - SRE Series

**Sub Miniature / High Density Rectangular / .025" Dia. / 3 Amps  
.030" Dia. / 5 Amps / .040" Dia. / 7.5 Amps**

### OUTLINE

**Hoods Formed Aluminum**

Dimensions are for reference only and are subject to change. Outline drawings on request.



Style H9 — Side Cable Opening

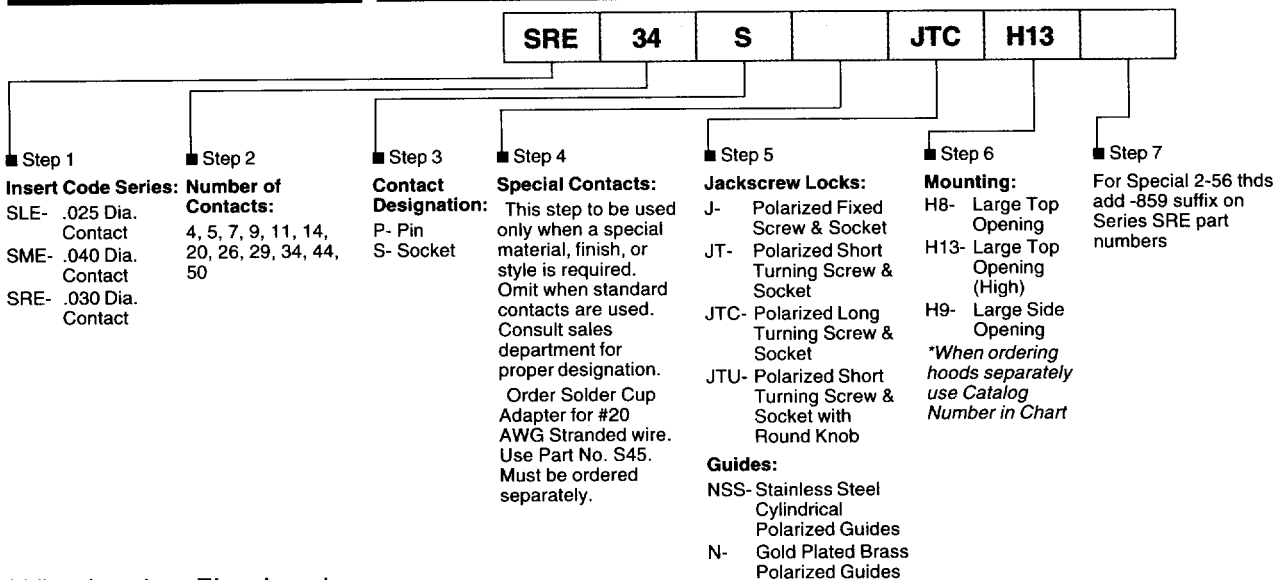
Style H8 / H13 — Top Cable Opening

### DIMENSIONS

Hood Style	Hood Catalog Number Guides Only*	Dimensions						Cable Opening		No. of Contacts
		A	B	C	D	G	H	E	F	
H8	SRE11H8	1.02	.72	.33	.78	—	.53	.28	.28	11
H8	SRE50H8	1.80	1.50	.45	1.63	—	.63	1.19	.38	50
H9	SRE11H9	—	.72	.33	.78	1.08	.53	.50	.22	11
H9	SRE50H9	—	1.50	.45	1.63	1.92	.63	1.19	.38	50
H13	SRE4&7H13	1.02	.75	.25	.78	—	.53	.22	.16	4 & 7
H13	SRE14H13	1.02	.75	.34	.88	—	.53	.25	.16	14
H13	SRE20H13	1.02	.75	.34	1.06	—	.53	.38	.25	20
H13	SRE26H13	1.02	.75	.34	1.25	—	.53	.41	.25	26
H13	SRE34H13	1.05	.75	.45	1.25	—	.63	.73	.38	34
NOT AVAILABLE										5
NOT AVAILABLE										9
H13	SRE29H13	1.02	.75	.34	1.34	—	.53	.41	.25	29
NOT AVAILABLE										44

\* Add "J" to hood part number when used with fixed jackscrews  
Add "JTC" to hood part number when used with long turning jackscrews.

### ORDERING INFORMATION



Winchester Electronics

400 Park Road ■ Watertown, Connecticut 06795-0500 ■ Phone: (860) 945-5000 ■ FAX: (860) 945-5191 ■ Internet: <http://www.liiton-wed.com>

单击下面可查看定价，库存，交付和生命周期等信息

[>>Infineon Technologies\(英飞凌\)](#)